



Fisheries and Oceans
Canada

Pêches et Océans
Canada

Canadian
Coast Guard

Garde côtière
canadienne

Notices to Mariners

Edition No. 02/2025
February 28, 2025



Safety First, Service Always

Monthly Summary of Temporary and Preliminary Notices

Canada 

Notices to Mariners – Monthly Summary of Temporary and Preliminary Notices
Edition No. 02/2025

Aussi disponible en français :
Avis aux navigateurs – Sommaire mensuel des avis temporaires et préliminaires
Édition n° 02/2025

Published under the Authority of:

Canadian Coast Guard Programs
Aids to Navigation and Waterways
Fisheries and Oceans Canada
Montreal, QC H2Y 2E7

For more information, contact DFO.Notmar-Notmar.MPO@dfo-mpo.gc.ca.

© His Majesty the King in Right of Canada,
as represented by the Minister of Fisheries, Oceans
and the Canadian Coast Guard, 2025.

Cat. No. Fs151-19E-PDF (Electronic PDF, English)
ISSN 2561-5106

Cat. No. Fs151-19F-PDF (Electronic PDF, French)
ISSN 2561-5114

A web version is available here:

<https://www.notmar.gc.ca/temp-pre-monthly> (English)

<https://www.notmar.gc.ca/temp-pre-mensuel> (French)

Explanatory Notes

Geographical positions refer directly to the graduations of the largest scale Canadian Hydrographic Service chart (unless otherwise indicated).

Bearings refer to the true compass and are measured clockwise from 000° (North) clockwise to 359°; those relating to lights are from seaward.

Visibility of lights is that in clear weather.

Depths - The units used for soundings (metres, fathoms or feet) are stated in the title of each chart.

Elevations are normally given above Higher High Water, Large Tide (unless otherwise indicated).

Explanation of Temporary and Preliminary Notices to Mariners

Certain Notices to Mariners appearing in the monthly editions have a (T) or (P) appended to the regular number. These letters indicate that the information contained in the notice is of a temporary or preliminary nature, respectively.

Temporary (T) Notices

If a temporary change in conditions affecting navigation exists and if the change will be effective for a period of over three months, a temporary (T) notice will be published. Temporary changes which are effective for periods of less than three months will not normally be published (unless it is of exceptional interest). Otherwise, information will be promulgated as a Navigational Warning (NAVWARN) by the Canadian Coast Guard Marine Communications and Traffic Services (MCTS) Centre(s) in the affected area. (T) notices will be cancelled as necessary.

Please note that (T) notices with an end date will be automatically cancelled once the end date has passed. In the event of a change to these notices, a new Notice to Mariners will be issued.

Preliminary (P) Notices

- a. When important changes affecting navigation are to take place in the near future, a Notice to Mariners describing the change will be published, so that mariners will have advance information on the change. Such notices will be designated (P).
- b. When a change in conditions affecting navigation has taken place but full information is not available, a preliminary (P) notice giving available information will be published. This notice will be followed by a regular notice when complete information becomes available. The regular notice will cancel the (P) notice.
- c. When a change has taken place which is too complex to describe in a written notice, a (P) notice giving general information will be published. This notice will explain that follow up action will be taken to update charts by publishing patch corrections, new editions or new charts.

Please note that following the expiry of the 90-day comment or objection period, (P) notices describing proposed changes or intention to discontinue will be automatically cancelled. In the event of a change to these notices, a new Notice to Mariners will be issued.

Action Required on Receipt Of (T) & (P) Notices

It is not customary to make permanent corrections to charts and publications from (T) & (P) notices. On receipt of such notices, the information they contain should be noted in pencil on the affected charts and/or publications.

Caution

Mariners are reminded that charts and publications are not corrected from (T) & (P) notices when purchased from suppliers. For the list of charts affected by (T) & (P) notices, please refer to the index on page ii of this publication.

Table of Contents

Newfoundland and Labrador Coast **1**

Temporary Notices

*306(T)/24	Larkin Point to / à Cape Anguille – Marine Works: Wharf Construction.....	1
*611(T)/24	Great St. Lawrence Harbour and / et Lamaline Harbour – Aid to Navigation Temporarily Discontinued	1
*719(T)/24	Burin Peninsula to / à Saint-Pierre – Waterway information	1
*1117(T)/24	Cape St Mary's to / à Argentia – Marine Works – Dredging Operations	2
*1208(T)/24	Lark Harbour and / et York Harbour – Marine Works: Wharf Construction	3

Preliminary Notices

No notices applicable for this edition.		3
--	--	---

Atlantic Coast **4**

Temporary Notices

*207(T)/22	Port de Québec – Obstruction	4
*411(T)/22	Lac Saint-Pierre – Obstruction: Floating and Falling Debris	4
*809(T)/22	Port de Montréal – Waterway Information: Calculation of Under-Keel Clearance	4
*1214(T)/22	Cap des Rosiers à/to Chandler – Obstruction: Sunken Barge and Excavator.....	4
*314(T)/23	Approaches to / Approches à Bay of Fundy / Baie de Fundy – Obstruction : Scientific Moorings.....	4
*315(T)/23	Georges Bank / Banc de Georges: Eastern Portion / Partie Est – Obstruction : Scientific Moorings.....	5
*316(T)/23	Havre de Gaspé – Caution Concerning Aquaculture Sites.....	5
*317(T)/23	Baie des Chaleurs / Chaleur Bay – Caution Concerning Aquaculture Sites	6
*318(T)/23	Plans, Baie des Chaleurs/Chaleur Bay (côte nord/North Shore) – Caution Concerning Aquaculture Sites.....	6
*509(T)/23	St. Marys Bay – Obstruction : Wreck.....	7
*710(T)/23	Port de Montréal – Waterway information – Mooring prohibited	7
*711(T)/23	Cap des Rosiers à/to Chandler – Obstruction : Scientific Moorings.....	7
*214(T)/24	Batiscan au/to Lac Saint-Pierre – Waterway Information: Shallow Depths Reported	8
*309(T)/24	Mouillages et Installations Portuaires/Anchages and Harbour Installations - Haute Côte-Nord – Obstruction: Anchors	8
*310(T)/24	Mouillages et Installations Portuaires/Anchages and Harbour Installations - Haute Côte-Nord – Marine Works: Wharf Construction.....	9
*721(T)/24	Cap Éternité à/to Saint Fulgence – Obstruction: Submerged Object.....	9
*722(T)/24	Baie des Sept-Îles – Obstruction: Submerged Object.....	9
*723(T)/24	Mouillages et Installations Portuaires/Anchages and Harbour Installations - Haute Côte-Nord – Obstruction: Submerged Object	9
*1021(T)/24	Batiscan au/to Lac Saint-Pierre – Waterway Information : Shallow Depth.....	10
*1118(T)/24	Port de Montréal – Shallow Depth Reported.....	11
*1119(T)/24	Batiscan au/to Lac Saint-Pierre – Obstruction: Diving Operations.....	11
*1120(T)/24	Îles de la Madeleine – Obstruction :Submerged Object	11

*1121(T)/24	Îles de la Madeleine – Obstruction :Wreck.....	11
*1209(T)/24	Pointe des Monts aux/to Escoumins – Obstruction: Subsurface Moorings.....	11
*1210(T)/24	Wedgeport and Vicinity / et les abords – Aid to Navigation Temporarily Discontinued	12

Preliminary Notices

*1211(P)/24	Hillsborough Bay – Unlit Buoys to be Discontinued	12
*208(P)/25	Chenal du Bic et les approches/and approches – Aid to Navigation to be Abandoned	13
*209(P)/25	Cap Whittle à/to Havre Saint-Pierre et/and Île d'Anticosti – Aid to Navigation to be Abandoned.....	13

Inland Waters 14

Temporary Notices

*814(T)/16	Main Duck Island to/à Scotch Bonnet Island – Partially Submerged Fixed Steel Barges....	14
*1219(T)/16	Toronto to/à Hamilton – Construction Operations	14
*108(T)/17	Harbours in Lake Erie/Havres dans le lac Érié – Unlit Buoys Temporarily Repositioned	14
*309(T)/17	Pelee Passage to/à la Detroit River – Low Water Levels Reported	15
*1206(T)/17	Lake Rosseau and/et Lake Joseph – Unlit Buoy Temporary Established.....	15
*709(T)/18	Kingston Harbour and Approaches/et les approches – Information Regarding Mooring and Anchoring	15
*1210(T)/20	Demarcation Bay to/à Philips Bay – Mobile Offshore Drilling Unit Temporarily Established	15
*112(T)/21	Upper Gap to/à Telegraph Narrows – Construction Operations	16
*413(T)/21	Kingston Harbour and Approaches/et les approches – Aid to Navigation Temporarily Unlit	16
*810(T)/21	Fort Frances to/à Hostess Island and/et Sandpoint Island – Aids to Navigation Temporarily Discontinued	16
*907(T)/21	Lac des Deux Montagnes – Missing Unlit Buoy	16
*108(T)/22	Lower Gap to/à Adolphus Reach – Construction Operations Frontenac II Ferry Dock.....	16
*413(T)/22	Detroit River – Waterway Information: Bridge Construction	17
*614(T)/22	Canal de la Rive Sud – Bridge Repair Work.....	17
*617(T)/22	Lac Saint-Louis – Aids to Navigation Temporarily Established	17
*109(T)/23	Port Hope Harbour – Dredging Operations.....	17
*917(T)/23	Hamilton Harbour – Waterway information - Procedure Changes	18
*216(T)/24	Canadian Coast Guard – Obstruction : Scientific Moorings.....	18
*313(T)/24	Havres et Mouillages - Harbours and Anchorages - Côte-Nord/North Shore – Waterway Information: Reduction of Capacity at Mooring Bollards	18
*413(T)/24	Lac Saint-Louis – Marine works : Construction and Drilling Operations	18
*728(T)/24	Toronto Harbour – Marine Works - Overhead Construction	19
*814(T)/24	Hamilton Harbour – Waterway Information – Shallow Depth Reported.....	19
*815(T)/24	Port of Thunder Bay – Obstruction – Lost Anchor	19
*910(T)/24	Kingston Harbour and Approaches/et les approches – Construction Operations	19
*1023(T)/24	Hamilton Harbour – Aid to Navigation	19
*1024(T)/24	Georgian Bay / Baie Georgienne – Aids to Navigation Temporarily Established	20
*1124(T)/24	Port of Thunder Bay – Waterway Information: Survey Results	20
*1212(T)/24	Nipigon Bay and Approaches/et les approches – Waterway Information: Shallow Depths Reported.....	21

*210(T)/25 Toronto Harbour – Construction Operations 21

Preliminary Notices

No notices applicable for this edition. 22

No notices applicable for this edition. 22

Pacific Coast 23

Temporary Notices

No notices applicable for this edition. 23

Preliminary Notices

*1214(P)/24 Baynes Sound – Range Lights to be Discontinued 23

Other (T) & (P) Notices 24

Temporary Notices

*1105(T)/15 Canada – Safety of Offshore Exploration and Exploitation Vessels 24

*217(T)/24 Canadian Coast Guard – Obstruction : Scientific Mooring 24

*1027(T)/24 Canadian Coast Guard – Automatic Identification System (AIS) 24

*1215(T)/24 Canadian Coast Guard – Automatic Identification System Application Specific Messages
(AIS ASM) Trial 25

Preliminary Notices

No notices applicable for this edition. 25

List of Charts Affected by (T) & (P) Notices

Chart No.	Pages	Chart No.	Pages	Chart No.	Pages
1202	9	2085	19, 21	4466	12
1220	9	2086	14	4485	4, 7
1223	13	2123	15	4486	6
1226	8, 9	2181	14	4625	1
1236	11	2201	20	4642	1
1310	4, 7, 11	2261	20	4654	3
1312	4	2282	20	4682	1
1313	8, 10, 11	2291	20	4841	2
1316	4	2312	21	4921	6
1429	17	2314	19, 20	4950	11
1430	17, 18	3527	23	6022	15
1510	16	4011	4	6108	16
2006	16	4025	13	7661	15
2017	15, 16, 19	4118	7	14853 (U.S.)	17
2018	16	4244	12		
2053	17	4255	5		
2060	14	4416	5		
2067	18, 19	4452	18		

Newfoundland and Labrador Coast

Temporary Notices

***306(T)/24 Larkin Point to / à Cape Anguille – Marine Works: Wharf Construction**

Reference chart: 4682

Wharf demolition and breakwater reconstruction operations underway in Codroy, NL at the following coordinates:

47° 52' 50.0"N 59° 23' 49.0"W

47° 52' 46.0"N 59° 23' 52.0"W

47° 52' 53.0"N 59° 24' 11.0"W

Caution.

(NW-N-0161-24)

***611(T)/24 Great St. Lawrence Harbour and / et Lamaline Harbour – Aid to Navigation
Temporarily Discontinued**

Reference chart: 4642

The following aid to navigation is temporarily discontinued:

Aid Name	LL #	Position
St. Lawrence Wharf	73.1	46° 54' 59.1"N 55° 23' 20.8"W

(N2024-093T)

***719(T)/24 Burin Peninsula to / à Saint-Pierre – Waterway information**

Reference chart: 4625

The Canadian Armed Forces has confirmed the presence of high explosive containing aerial bombs of varying sizes at the sites of the shipwrecks of the USS Truxtun, near Lawn Point, and the USS Pollux, near Chambers Cove.

Positions: 46° 52' 42.1"N 055° 26' 26.2"W and 46° 52' 49.2"N 055° 29' 24.7"W

At this time the Canadian Armed Forces have determined that the health and safety risks associated with removal of these munitions are too great and in place detonation is not advisable.

Mariners are advised to keep a safe distance from these shipwrecks.

Caution.

(NW-N-0665-24)

***1117(T)/24 Cape St Mary's to / à Argentinia – Marine Works – Dredging Operations**

Reference: Notice 1020(T)/24 is cancelled.

Reference chart: 4841

Debris removal, boulder removal, and dredging operations are underway in the areas bounded by the following coordinates:

Floating dredging pipeline assembly and deployment operations are underway within the area bounded by the following "Exit Channel" coordinates:

47° 18.680'N 053° 58.223'W
47° 18.540'N 053° 57.907'W
47° 18.307'N 053° 58.122'W
47° 18.482'N 053° 58.503'W

The pipeline are fitted with lights and radar reflectors with combined total length measuring approximately 596 meters. Pipeline anchor positions are individually marked by yellow cautionary buoys.

Inner Channel:

47° 19.659'N 053° 57.518'W
47° 19.699'N 053° 57.007'W
47° 19.059'N 053° 56.972'W
47° 19.045'N 053° 57.484'W

Outer Channel:

47° 20.965'N 053° 58.704'W
47° 20.583'N 053° 57.292'W
47° 20.269'N 053° 57.533'W
47° 20.657'N 053° 58.975'W

Environmental monitoring buoys equipped with lights and radar reflectors deployed in:

47° 19.969'N 053° 59.099'W
47° 19.725'N 053° 57.066'W
47° 19.686'N 053° 56.798'W

Removed boulders are relocated to the areas bounded by the following coordinates:

Inner Channel Boulder Relocation Area:

47° 19.089'N 053° 57.115'W
47° 19.092'N 053° 57.036'W
47° 19.653'N 053° 57.067'W
47° 19.651'N 053° 57.147'W

Outer Channel Boulder Relocation Area:

47° 20.543'N 053° 57.405'W
47° 20.594'N 053° 57.376'W
47° 20.945'N 053° 58.703'W
47° 20.894'N 053° 58.732'W

Vessels are moving to transit dredged material to offshore disposal areas in the vicinity of:

Placentia Sound Offshore Disposal Site:

47° 18.393'N 053° 55.372'W

The Pond Offshore Disposal Site:

47° 18.990'N 053° 59.576'W

Multiple vessels, barges and dredges are involved in the operations, all are monitoring VHF channel 16 and are requesting a wide berth of at least 100 meters.

Caution.

(NW-N-1086-24)

***1208(T)/24 Lark Harbour and / et York Harbour – Marine Works: Wharf Construction**

Reference chart: 4654

Wharf reconstruction underway in Lark Harbour in the vicinity of 49° 06.069'N 058° 21.866'W.

Caution.

(NW-N-1171-24)

Preliminary Notices

Atlantic Region

Comment Submission

Comments on proposed changes in preliminary (P) notices are solicited from mariners and other interested parties within three months of the initial publication date. Following this date, the notices will be cancelled. Any objections raised must state the facts on which they are based and should include supporting information on safety, commerce and public benefit.

Comments should be directed to the following:

Superintendent,
Aids to Navigation & Waterways
Canadian Coast Guard, Atlantic Region
P.O. Box 1000
50 Discovery Drive
Dartmouth, NS B2Y 3Z8
Telephone: (506) 636-4708
Email: [DFO.CCGATLaidstoNavDiscont-
AidesalanavSupprATLGCC.MPO@dfo-mpo.gc.ca](mailto:DFO.CCGATLaidstoNavDiscont-AidesalanavSupprATLGCC.MPO@dfo-mpo.gc.ca)

No notices applicable for this edition.

Atlantic Coast

Temporary Notices

***207(T)/22 Port de Québec – Obstruction**

Reference chart: 1316

Power boat 6 metres in length reported sunk at 46° 43.830'N 071° 20.000'W.

(NW-Q-1348-21)

***411(T)/22 Lac Saint-Pierre – Obstruction: Floating and Falling Debris**

Reference chart: 1312

Floating and falling debris reported beneath the bridge located at 46° 04.783'N 073° 09.205'W. The bridge is marked with yellow buoys suspended at mid-height between the deck and the water level. Warning signs installed above.

(NW-Q-1266-19)

***809(T)/22 Port de Montréal – Waterway Information: Calculation of Under-Keel Clearance**

Reference chart: 1310

Canadian Coast Guard Marine Communications and Traffic Services has been using all Canadian Hydrographic Service water-level stations for the calculation of passage authorizations in the Sorel–Montreal sector of the navigational waterway, namely Sorel, Contrecoeur, Varennes, Montreal-Frontenac and Montreal-Jetty No. 1.

In light of the particular features of the navigational waterway in the portion between buoys M84 (downstream of the municipality of Verchères) and M157 (opposite to the Port of Montreal, section 109) as well as the No. 1 Anchorage Pointe-aux-Tremble, it was agreed to adjust upward the available water column by 10 cm in this portion.

The minimum water column in this portion of the navigational waterway as per the Varennes hydrographic station, obtained after adjustment, will be used for the calculation of under-keel clearance.

(NW-Q-0776-22)

***1214(T)/22 Cap des Rosiers à/to Chandler – Obstruction: Sunken Barge and Excavator**

Reference chart: 4485

Sunken barge and excavator reported at 48° 35.1'N 064° 08.1'W. Barge is 18 metres by 7 metres.

(NW-Q-1709-22)

***314(T)/23 Approaches to / Approches à Bay of Fundy / Baie de Fundy – Obstruction : Scientific Moorings**

Reference chart: 4011

Subsurface scientific equipment deployed in 42° 50.437'N 066° 43.862'W. Top of equipment is at 214 metres water depth.

(NW-M-0285-23)

***315(T)/23 Georges Bank / Banc de Georges: Eastern Portion / Partie Est – Obstruction : Scientific Moorings**

Reference chart: 4255

Subsurface scientific equipment deployed in 42° 18.196'N 065° 59.250'W. Top of equipment is at 234 metres water depth.

(NW-M-0284-23)

***316(T)/23 Havre de Gaspé – Caution Concerning Aquaculture Sites**

Reference chart: 4416

Vicinity	Positions	Description
L'Anse-aux-Cousins	48° 51' 21.2"N 064° 30' 02.6"W 48° 51' 06.2"N 064° 29' 25.6"W 48° 51' 00.2"N 064° 30' 02.6"W 48° 51' 00.2"N 064° 29' 30.6"W	Unmarked aquaculture site with submerged equipment.
Havre de Gaspé	48° 51' 50.2"N 064° 29' 02.5"W 48° 51' 20.2"N 064° 28' 37.5"W 48° 51' 20.2"N 064° 28' 16.5"W 48° 50' 47.2"N 064° 28' 16.5"W 48° 51' 23.2"N 064° 29' 40.5"W 48° 51' 23.2"N 064° 29' 20.5"W 48° 51' 30.2"N 064° 29' 02.5"W	Unmarked aquaculture site with submerged equipment.
Havre de Gaspé	48° 51' 18.5"N 064° 27' 02.5"W 48° 51' 08.8"N 064° 26' 34.6"W 48° 50' 51.1"N 064° 26' 35.4"W 48° 50' 47.2"N 064° 26' 45.5"W 48° 50' 47.2"N 064° 27' 02.5"W	Unmarked aquaculture site with submerged equipment, some of which is located outside the defined area.
Havre de Gaspé	48° 50' 25.7"N 064° 28' 24.5"W 48° 50' 51.2"N 064° 29' 28.7"W 48° 51' 03.8"N 064° 29' 16.1"W 48° 50' 37.7"N 064° 28' 12.6"W	Unmarked aquaculture site with submerged equipment.
Havre de Gaspé	48° 50' 47.2"N 064° 27' 07.5"W 48° 50' 38.6"N 064° 27' 07.5"W 48° 50' 29.4"N 064° 27' 34.1"W 48° 50' 44.9"N 064° 28' 11.5"W 48° 50' 47.1"N 064° 28' 11.3"W	Aquaculture site with non-compliant buoyage and equipment at the surface.
Havre de Gaspé	48° 51' 17.6"N 064° 28' 11.6"W 48° 51' 00.2"N 064° 28' 11.6"W 48° 51' 17.6"N 064° 27' 07.6"W 48° 51' 00.2"N 064° 27' 07.6"W	Aquaculture site with non-compliant buoyage with surface and submerged equipment.
Baie de Gaspé	48° 51' 21.2"N 064° 30' 02.6"W 48° 51' 06.2"N 064° 29' 25.6"W 48° 51' 00.2"N 064° 30' 02.6"W 48° 51' 00.2"N 064° 29' 30.6"W	Unmarked aquaculture site with submerged equipment.

(NW-Q-0732-16, NW-Q-0735-16, NW-Q-0737-16, NW-Q-0758-16,
NW-Q-0761-16, NW-Q-0794-16, NW-Q-1719-18)

***317(T)/23 Baie des Chaleurs / Chaleur Bay – Caution Concerning Aquaculture Sites**

Reference chart: 4486

Vicinity	Positions	Description
Cascapedia Bay	48° 07' 10.7"N 066° 01' 18.2"W 48° 07' 31.1"N 066° 00' 30.8"W 48° 07' 00.8"N 065° 59' 59.9"W 48° 06' 39.7"N 066° 00' 47.0"W	Aquaculture site with non-compliant buoyage with surface and submerged equipment.
Cascapedia Bay	48° 07' 22.0"N 065° 55' 12.0"W 48° 07' 22.0"N 065° 53' 14.0"W 48° 06' 33.0"N 065° 53' 14.0"W 48° 06' 33.0"N 065° 55' 12.0"W	Aquaculture site with non-compliant buoyage with submerged equipment.
Cascapedia Bay	48° 05' 24.2"N 066° 01' 42.8"W 48° 06' 11.2"N 066° 00' 07.8"W 48° 05' 36.2"N 065° 59' 29.8"W 48° 04' 49.2"N 066° 01' 04.8"W	Aquaculture site marked with non-compliant buoyage with surface and submerged equipment.
Tracadigache Bay	48° 05' 12.0"N 066° 12' 02.6"W 48° 05' 12.0"N 066° 11' 00.0"W 48° 04' 30.0"N 066° 11' 00.0"W 48° 04' 30.0"N 066° 12' 02.6"W	Aquaculture site with temporarily non-compliant buoyage.

(NW-Q-0769-16, NW-Q-0770-16, NW-Q-0783-16, NW-Q-0789-16)

***318(T)/23 Plans, Baie des Chaleurs/Chaleur Bay (côte nord/North Shore) – Caution Concerning Aquaculture Sites**

Reference chart: 4921

Vicinity	Positions	Description
Carleton-sur-Mer	48° 05' 21.9"N 066° 01' 55.5"W 48° 04' 45.0"N 066° 01' 15.3"W 48° 04' 21.7"N 066° 02' 11.5"W 48° 04' 56.2"N 066° 02' 51.2"W	Unmarked aquaculture site with submerged equipment.
Carleton-sur-Mer	48° 05' 50.6"N 066° 02' 27.5"W 48° 05' 29.7"N 066° 02' 04.7"W 48° 05' 04.8"N 066° 03' 00.7"W 48° 05' 25.6"N 066° 03' 23.5"W	Unmarked aquaculture site with submerged equipment.
Carleton-sur-Mer	48° 06' 14.9"N 066° 00' 02.5"W 48° 05' 39.1"N 065° 59' 22.1"W 48° 06' 28.1"N 065° 57' 41.7"W 48° 07' 02.8"N 065° 58' 21.3"W	Unmarked aquaculture site with submerged equipment.

(NW-Q-1716-18, NW-Q-1717-18, NW-Q-1718-18)

***509(T)/23 St. Marys Bay – Obstruction : Wreck**

Reference chart: 4118

Sunken 30 by 90 feet barge with 500 feet of tow line still attached at the following position:
44° 16' 24.9"N 066° 28' 44.9"W Caution.

(NW-M-0529-23)

***710(T)/23 Port de Montréal – Waterway information – Mooring prohibited**

Reference chart: 1310

Mooring indefinitely prohibited at section 31 of the Port of Montreal.

(NW-Q-0476-23)

***711(T)/23 Cap des Rosiers à/to Chandler – Obstruction : Scientific Moorings**

Reference chart: 4485

Six sub-surface scientific moorings established at:

48 37.390N 064 07.734W

48 43.925N 064 08.099W

48 41.868N 064 04.632W

48 39.987N 064 00.959W

48 38.023N 063 57.919W

48 36.274N 063 54.923W

Top float 24 metres below the surface.

(NW-Q-0662-23)

***214(T)/24 Batiscan au/to Lac Saint-Pierre – Waterway Information: Shallow Depths Reported**

Reference: Notice 313(T)/23 is cancelled (Chart 1313).

Reference chart: 1313

A shallower depth of 10.4 metres is located at the following positions:

46° 19.997' N	072° 32.698' W
46° 19.993' N	072° 32.675' W
46° 19.983' N	072° 32.682' W
46° 19.980' N	072° 32.703' W
46° 19.985' N	072° 32.718' W

A shallower depth of 10.6 metres is located at the following positions:

46° 19.978' N	072° 32.731' W
46° 19.979' N	072° 32.701' W
46° 19.970' N	072° 32.703' W
46° 19.971' N	072° 32.732' W

A shallower depth of 10.4 metres is located at the following positions:

46° 19.983' N	072° 32.785' W
46° 19.982' N	072° 32.747' W
46° 19.973' N	072° 32.752' W
46° 19.972' N	072° 32.768' W
46° 19.971' N	072° 32.792' W

(NW-Q-1338-23)

***309(T)/24 Mouillages et Installations Portuaires/Anchorages and Harbour Installations - Haute Côte-Nord – Obstruction: Anchors**

Reference chart: 1226

Lost anchors at the following coordinates:

49° 59' 53.4"N	66° 48' 45.0"W
50° 00' 04.3"N	66° 48' 38.4"W
50° 00' 55.2"N	66° 46' 06.0"W

(NW-Q-0166-20, 0580-23, 0870-23)

***310(T)/24 Mouillages et Installations Portuaires/Anchorages and Harbour Installations -
Haute Côte-Nord – Marine Works: Wharf Construction**

Reference chart: 1226

Wharf repair works are taking place daily between 1100 UTC and 2100 UTC at wharves 1, 2 and 3 of the Port-Cartier Harbour.

Barge and safety boat on site.

(NW-C-0316-24)

***721(T)/24 Cap Éternité à/to Saint Fulgence – Obstruction: Submerged Object**

Reference chart: 1202

Anchor with 4 shackles of chain reported in the vicinity of:

48° 20' 00.0"N 070° 51' 48.6"W

(NW-Q-1097-22)

***722(T)/24 Baie des Sept-Îles – Obstruction: Submerged Object**

Reference chart: 1220

Anchor and chain lost in position at the following coordinates:

50° 11' 04.8"N 066° 28' 01.8"W

Caution.

(NW-Q-0592-19)

***723(T)/24 Mouillages et Installations Portuaires/Anchorages and Harbour Installations -
Haute Côte-Nord – Obstruction: Submerged Object**

Reference chart: 1226

Anchor with 11 shackles of chain reported in the vicinity of:

49° 14' 42.0"N 068° 06' 00.0"W

Anchoring is prohibited in the zone until further notice. For more information, contact Mr. Martin Roy at 418-297-6164.

(NW-Q-0032-22)

***1021(T)/24 Batiscan au/to Lac Saint-Pierre – Waterway Information : Shallow Depth**

Reference chart: 1313

Shallow depths reported in the port of Trois-Rivières at the following coordinates:

Shallow depth of 10.4 metres located at Section 13: Shallow depth of 10.0 metres located at Section 14 and a portion of Section 15:

- 46° 20.027'N 072° 32.614'W
- 46° 20.025'N 072° 32.608'W
- 46° 20.034'N 072° 32.597'W
- 46° 20.037'N 072° 32.603'W
- 46° 19.990'N 072° 32.795'W
- 46° 19.990'N 072° 32.738'W
- 46° 20.004'N 072° 32.672'W
- 46° 20.013'N 072° 32.648'W
- 46° 20.017'N 072° 32.765'W

Shallow depth of 10.3 metres located at Section 16: Shallow depth of 10.2 metres located at Section 16:

- 46° 19.964'N 072° 32.795'W
- 46° 19.976'N 072° 32.785'W
- 46° 19.987'N 072° 32.738'W
- 46° 19.973'N 072° 32.740'W
- 46° 19.997'N 072° 32.789'W
- 46° 19.996'N 072° 32.766'W
- 46° 19.964'N 072° 32.795'W
- 46° 19.965'N 072° 32.821'W

Shallow depth of 10.5 metres located at Section 16: Shallow depth of 10.2 metres located at Section 16:

- 46° 19.968'N 072° 32.704'W
- 46° 19.970'N 072° 32.745'W
- 46° 19.976'N 072° 32.741'W
- 46° 19.978'N 072° 32.695'W
- 46° 19.985'N 072° 32.706'W
- 46° 19.979'N 072° 32.699'W
- 46° 19.979'N 072° 32.677'W
- 46° 19.993'N 072° 32.660'W
- 46° 20.000'N 072° 32.688'W

Shallow depth of 10.2 metres located at Section 17: Shallow depth of 10.5 metres located at Section 19:

- 46° 19.852'N 072° 32.772'W
- 46° 19.851'N 072° 32.768'W
- 46° 19.845'N 072° 32.774'W
- 46° 19.846'N 072° 32.775'W
- 46° 19.830'N 072° 32.785'W
- 46° 19.831'N 072° 32.787'W
- 46° 19.840'N 072° 32.780'W
- 46° 19.839'N 072° 32.778'W

Shallow depth of 10.6 metres located at Section 19: Shallow depth of 10.5 metres located at Section 20:

- 46° 19.786'N 072° 32.824'W
- 46° 19.801'N 072° 32.813'W
- 46° 19.798'N 072° 32.809'W
- 46° 19.782'N 072° 32.819'W
- 46° 19.728'N 072° 32.874'W
- 46° 19.727'N 072° 32.870'W
- 46° 19.738'N 072° 32.859'W
- 46° 19.739'N 072° 32.864'W

(NW-C-1191, 1342, 1871, 1872-24)

***1118(T)/24 Port de Montréal – Shallow Depth Reported**

Reference chart: 1310

Shallower depth of 10,4 metres located at the following coordinates: 45° 30' 18.9"N 073° 32' 48.3"W.

(NW-C-1866-24)

***1119(T)/24 Batiscan au/to Lac Saint-Pierre – Obstruction: Diving Operations**

Reference chart: 1313

Diving operations taking place in Port of Trois-Rivières Monday to Friday from 1100 UTC to 2100 UTC at wharf 17.

(NW-C-2820-24)

***1120(T)/24 Îles de la Madeleine – Obstruction :Submerged Object**

Reference chart: 4950

Rocks and dolosses have been located 7 metres from the pierhead of the southern breakwall at a depth of 2 metres at the following coordinates:

47° 23.304'N 061° 47.513'W

47° 23.301'N 061° 47.507'W

47° 23.308'N 061° 47.517'W

47° 23.299'N 061° 47.500'W

47° 23.298'N 061° 47.493'W

(NW-C-1877-24)

***1121(T)/24 Îles de la Madeleine – Obstruction :Wreck**

Reference chart: 4950

The vessel SS Corfu Island has been assessed as a hazard to public safety by Canadian Coast Guard under the *Wrecked, Abandoned or Hazardous Vessels Act*. The bow of the wreck is located on the beach at position 47° 20.813'N 061° 57.014'W and the wreck extends seaward in a southwesterly direction over 137.5 metres in length and 17.5 metres in width.

It is forbidden to access or climb it for any reason. Mariners are requested to keep a wide berth from the wreckage.

(NW-C-1861-24)

***1209(T)/24 Pointe des Monts aux/to Escoumins – Obstruction: Subsurface Moorings**

Reference chart: 1236

Subsurface scientific moorings temporarily established at the following coordinates:

Moorings E1: 48° 53.322'N 068° 06.180'W (depth of 319 metres)

Moorings W1: 48° 48.033'N 068° 23.991'W (depth of 355 metres)

(NW-C-1823-24)

***1210(T)/24 Wedgeport and Vicinity / et les abords – Aid to Navigation Temporarily Discontinued**

Reference chart: 4244

The following aid to navigation is temporarily discontinued:

Aid Name	LL #	Position
Pinkneys Point Fog Signal	278.2	43° 42' 11.6"N 066° 03' 12.1"W

(F2024-060T)

Preliminary Notices

Atlantic Region

Comment Submission

Comments on proposed changes in preliminary (P) notices are solicited from mariners and other interested parties within three months of the initial publication date. Following this date, the notices will be cancelled. Any objections raised must state the facts on which they are based and should include supporting information on safety, commerce and public benefit.

Comments should be directed to the following:

Superintendent,
Aids to Navigation & Waterways
Canadian Coast Guard, Atlantic Region
P.O. Box 1000
50 Discovery Drive
Dartmouth, NS B2Y 3Z8
Telephone: (506) 636-4708
Email: DFO.CCGATLaidstoNavDiscont-AidesalanavSupprATLGCC.MPO@dfo-mpo.gc.ca

***1211(P)/24 Hillsborough Bay – Unlit Buoys to be Discontinued**

Reference chart: 4466

The Canadian Coast Guard proposes to permanently discontinue the following aids to navigation:

Aid Name	LL #	Position
Pownal buoy CD1	5989.2	46° 10' 21.8"N 062° 58' 02.7"W
Pownal buoy CD2	5989.3	46° 10' 47.3"N 062° 57' 33.1"W
Pownal buoy CD3	5989.4	46° 10' 51.4"N 062° 57' 33.6"W
Pownal buoy CD4	5989.5	46° 11' 01.1"N 062° 57' 22.2"W
Pownal buoy CD5	5989.6	46° 11' 05.1"N 062° 57' 29.3"W
Pownal buoy CD6	5989.7	46° 11' 11.5"N 062° 57' 22.2"W

Initial publication date: Friday, December 27, 2024

[Comment submission deadline](#): Thursday, March 27, 2025

(G2024-566)

***208(P)/25 Chenal du Bic et les approches/and approaches – Aid to Navigation to be Abandoned**

Reference chart: 1223

The Canadian Coast Guard proposes to permanently abandon the following aid to navigation:

Aid Name	LL #	Position
Île Bicquette Sector	1748	48° 24' 55.6"N 068° 53' 34.0"W

The structure will remain.

Initial publication date: Friday, February 28, 2025

[Comment submission deadline](#): Thursday, May 29, 2025

(Q2024-215)

***209(P)/25 Cap Whittle à/to Havre Saint-Pierre et/and Île d'Anticosti – Aid to Navigation to be Abandoned**

Reference chart: 4025

The Canadian Coast Guard proposes to permanently abandon the following aid to navigation:

Aid Name	LL #	Position
Cap-de-la-Table	1513.2	49° 21' 04.3"N 061° 53' 44.4"W

The structure will remain.

Initial publication date: Friday, February 28, 2025

[Comment submission deadline](#): Thursday, May 29, 2025

(Q2025-026)

Inland Waters

Temporary Notices

***814(T)/16 Main Duck Island to/à Scotch Bonnet Island – Partially Submerged Fixed Steel Barges**

Reference chart: 2060

There are 3 partially submerged fixed steel barges in North end of West Lake (43° 57' 02.3"N 077° 20' 12.8"W), which have been reported just below the water line.

Barges are marked with cautionary buoys.

(NOTSHIP C1641/14)

***1219(T)/16 Toronto to/à Hamilton – Construction Operations**

Reference chart: 2086

Construction operations taking place from November 14, 2016 until approximately 2026 at Lakeview Water Treatment Plant between Marie Curtis Park and Serson Creek. A variety of equipment will be used to expand the land mass along the shoreline. Landfill and 3 islands will be lit and marked.

(NOTSHIP C2533/16)

***108(T)/17 Harbours in Lake Erie/Havres dans le lac Érié – Unlit Buoys Temporarily Repositioned**

Reference chart: 2181

The following unlit spar buoys have been temporarily repositioned due to silting:

Aid Name	LL #	Temporary Changes
ES2	7169	Reposition to 42° 39' 10.0"N 081° 12' 32.0"W
ES3	7170	Reposition to 42° 39' 15.4"N 081° 12' 40.7"W
ES4	7171	Reposition to 42° 39' 16.8"N 081° 12' 37.7"W

The shallowest depth to 3.5M occurs between ES3 and ES4 with the deepest water off the red side of the channel. Mariners are requested to use caution in the area.

(B2017-003)

***309(T)/17 Pelee Passage to/à la Detroit River – Low Water Levels Reported**

Reference chart: 2123

Low water levels have been reported from the south end of the entrance to Sturgeon Creek Harbour northward.

Annette Winter
Project and Divestiture Officer
Small Craft Harbours
Fisheries and Oceans Canada

Canada Centre for Inland Waters (CCIW)
867 Lakeshore Road
Burlington, ON L7S 1A1
Telephone: (905) 315-5286
Email: annette.winter@dfo-mpo.gc.ca

(NOTSHIP C58/13)

***1206(T)/17 Lake Rosseau and/et Lake Joseph – Unlit Buoy Temporary Established**

Reference chart: 6022

The following unlit buoy has been temporary established:

Aid Name	LL #	Position
P3/1	9089.1	45° 08' 09.0"N 079° 40' 36.0"W

(D2017-006)

***709(T)/18 Kingston Harbour and Approaches/et les approches – Information Regarding Mooring and Anchoring**

Reference: Notice 309(T)/14 is cancelled.

Reference chart: 2017

All mooring or anchoring within the public port of Kingston is prohibited outside of designated marina areas until further notice without authorization from the port official.

Inquiries are to be directed to Transport Canada at (416) 952-0475.

***1210(T)/20 Demarcation Bay to/à Philips Bay – Mobile Offshore Drilling Unit Temporarily Established**

Reference: Notice 616(T)/07 is cancelled.

Reference chart: 7661

The unmanned mobile offshore drilling unit “SDC” continues to be temporarily established at 69° 24.71'N 138° 53.76'W. The structure is 202.4 metres long and 53 metres wide.

For information, contact Captain Connelly at 1-250-598-4513 or 1-250-744-9818 or e-mail at doncon@islandnet.com or dcmarine@shaw.ca.

***112(T)/21 Upper Gap to/à Telegraph Narrows – Construction Operations**

Reference chart: 2006

Construction operations are currently underway on the Bay of Quinte Skyway Bridge.
During these operations, lit barges are on site and the bridge clearance is 19 metres.

(NW-C-2834-19)

***413(T)/21 Kingston Harbour and Approaches/et les approches – Aid to Navigation
Temporarily Unlit**

Reference chart: 2017

The following aid to navigation is temporarily unlit:

Marysville Wharf light (LL 399.3): 44° 11' 42.4"N 076° 26' 27.3"W

(NW-C-1802-20)

***810(T)/21 Fort Frances to/à Hostess Island and/et Sandpoint Island – Aids to Navigation
Temporarily Discontinued**

Reference chart: 6108

The following aids to navigation are temporarily discontinued:

Aid Name	LL #	Position
Noden Causeway East	1465	48° 39' 08.5"N 093° 18' 47.6"W
Noden Causeway West	1466	48° 39' 08.5"N 093° 18' 49.1"W

(D2021-026T, 027T)

***907(T)/21 Lac des Deux Montagnes – Missing Unlit Buoy**

Reference chart: 1510

The following unlit buoy is currently missing and will not be replaced before the 2022 navigation season:

Aid Name	LL #	Position
Chenal Saint-Placide buoy HJ17	6251.68	45° 31' 20.7"N 074° 12' 25.1"W

(NW-Q-1526-20)

***108(T)/22 Lower Gap to/à Adolphus Reach – Construction Operations Frontenac II Ferry
Dock**

Reference chart: 2018

Construction operations are taking place daily during daylight hours at the Millhaven and Stella ferry docks.
Temporary docks will be installed in the vicinity of the ferry docks. Docks will be marked with buoys and lit with amber lights.

(NW-C-2916-17)

***413(T)/22 Detroit River – Waterway Information: Bridge Construction**

Reference chart: 14853 (U.S.)

Bridge construction operations taking place in an area bounded by:

42° 17.200'N 083° 05.633'W

42° 17.183'N 083° 05.600'W

42° 17.067'N 083° 05.667'W

42° 17.000'N 083° 05.717'W

42° 17.017'N 083° 05.750'W

42° 17.100'N 083° 05.667'W

Unauthorized entry prohibited.

(NW-C-0151-22)

***614(T)/22 Canal de la Rive Sud – Bridge Repair Work**

Reference chart: 1429

Repair work in progress at the Honoré-Mercier Bridge (upstream) between Lasalle and Kahnawake. Bridge deck installed under the bridge span.

(NW-Q-1810-19)

***617(T)/22 Lac Saint-Louis – Aids to Navigation Temporarily Established**

Reference chart: 1430

Six yellow lighted buoys marking a 400 metres breakwater awash temporarily established at the following coordinates:

45° 20' 44.5"N 073° 50' 32.9"W 45° 21' 00.3"N 073° 50' 11.6"W

45° 20' 47.7"N 073° 50' 29.4"W 45° 21' 05.4"N 073° 50' 07.6"W

45° 20' 50.0"N 073° 50' 24.1"W 45° 21' 11.8"N 073° 50' 04.6"W

(NW-Q-0579-22)

***109(T)/23 Port Hope Harbour – Dredging Operations**

Reference: Notice 809(T)/18 is cancelled.

Reference chart: 2053

Dredging and wall repair operations in Port Hope Harbour. Entrance to the western basin is blocked. Caution.

***917(T)/23 Hamilton Harbour – Waterway information - Procedure Changes**

Reference: Notice *713(T)/23 is cancelled.

Reference chart: 2067

Since July 1st 2023, commercial vessels exiting the Hamilton Harbour are to provide advanced notice. Public Service and Procurement Canada is requesting four calls to the Bridge Master on VHF Channel 16:

A call 2 hours in advance of departure;

A call 1 hour in advance of departure;

A call when departing the pier;

A call when lining up in the canal.

(NW-C-1600-23)

***216(T)/24 Canadian Coast Guard – Obstruction : Scientific Moorings**

Scientific moorings established at position 71° 58' 01.2"N 095° 03' 52.8"W. Least depth 122.8 metres.

(NAVAREA XVIII 32/2011)

***313(T)/24 Havres et Mouillages - Harbours and Anchorages - Côte-Nord/North Shore –
Waterway Information: Reduction of Capacity at Mooring Bollards**

Reference chart: 4452

Capacity reduced to 10 metric tons for bollards B01, B10, B12, B14 and B17 and 20 metric tons for bollards B03 to B09, B11, B13, B15, B16 and B18 at Natashquan public wharf. Bollard B02 is still out of order.

(NW-C-0292-24)

***413(T)/24 Lac Saint-Louis – Marine works : Construction and Drilling Operations**

Reference: Notice 312(T)/24 is cancelled (Chart 1430).

Reference chart: 1430

Ongoing construction and drilling operations are taking place in the vicinity of the Île aux Tourtes bridge. Barges and boats are on site.

Lit steel pile installed at 45° 25' 15.4"N 73° 58' 58.0"W showing 2 meters above the surface.

Suspended platform installed at 45° 25' 14.0"N 73° 58' 44.0"W, reducing bridge clearance by 4 meters.

Minimum wake.

(NW-C-0336-24)

***728(T)/24 Toronto Harbour – Marine Works - Overhead Construction**

Reference: Notice 415(T)/23 is cancelled (Chart 2085).

Position : 43° 37' 44.3"N 079° 25' 04.3"W

Overhead construction taking place in the North Marina of Ontario Place between West Island and East Island. Waterway closed to marine traffic.

***814(T)/24 Hamilton Harbour – Waterway Information – Shallow Depth Reported**

Reference chart: 2067

The southern section of the Pier 10 slip south of 43° 16' 26.1"N 079° 51' 01.9"W does not have the minimum seaway draft.

Mariners are to contact the Hamilton Harbour Master's office at 1 (905) 525-3412 to obtain soundings.

(NW-C-2395-23)

***815(T)/24 Port of Thunder Bay – Obstruction – Lost Anchor**

Reference chart: 2314

Anchor and chain lost at the following coordinates:

48° 19' 24.0"N 089° 09' 30.0"W

(NW-C-1623-24)

***910(T)/24 Kingston Harbour and Approaches/et les approches – Construction Operations**

Reference: Notice 1012(T)/20 is cancelled (Chart 2017).

Reference chart: 2017

Wharf construction is taking place daily from 1100 UTC to 2300 UTC at the Kingston-Wolfe Island ferry terminal. The ferry remains operational. Vessels are not permitted to dock on the south side. The construction area is marked by yellow buoys equipped with yellow flashing lights.

***1023(T)/24 Hamilton Harbour – Aid to Navigation**

Reference chart: 2067

Light permanently established in 43° 16.443'N 079° 50.568'W to mark difference in alignment between east and west sections of Pier 12 North. Light is flashing yellow with elevation of 5.15 metres.

(NW-C-2379-20)

***1024(T)/24 Georgian Bay / Baie Georgienne – Aids to Navigation Temporarily Established**

Reference: Notice 618(T)/22 is cancelled.

Reference chart: 2201, 2261, 2282, 2291

Sixteen sub-surface moorings have been temporarily established at the following coordinates:

(1)	44° 25.853'N 081° 31.280'W	(41)	44° 15.853'N 081° 37.019'W
(7)	44° 22.940'N 081° 33.904'W	(43)	44° 19.819'N 081° 36.611'W
(8)	44° 22.071'N 081° 34.958'W	(45)	44° 25.255'N 081° 29.432'W
(9)	44° 22.827'N 081° 32.396'W	(46)	44° 20.833'N 081° 33.944'W
(12)	44° 21.706'N 081° 34.456'W	(47)	44° 20.568'N 081° 34.039'W
(29)	44° 15.856'N 081° 37.465'W	(B)	44° 13.921'N 081° 37.367'W
(30)	44° 15.800'N 081° 36.698'W	(F)	44° 34.038'N 081° 21.418'W
(39)	44° 25.572'N 081° 30.102'W	(ol3)	44° 45.321'N 081° 18.556'W

(NW-C-2824-24)

***1124(T)/24 Port of Thunder Bay – Waterway Information: Survey Results**

Reference chart: 2314

Post dredging survey reports depths in the navigable channel of the Mission River have been dredged to a minimum depth of 8.25 metres. The area is delimited by the following coordinates:

Pt 1:	48° 21.924'N 089° 13.938'W	Pt 15:	48° 21.852'N 089° 13.968'W
Pt 2:	48° 21.864'N 089° 13.920'W	Pt 16:	48° 21.864'N 089° 13.944'W
Pt 3:	48° 21.834'N 089° 13.908'W	Pt 17:	48° 21.888'N 089° 13.950'W
Pt 4:	48° 21.804'N 089° 13.902'W	Pt 18:	48° 21.948'N 089° 13.974'W
Pt 5:	48° 21.732'N 089° 13.860'W	Pt 19:	48° 21.984'N 089° 13.998'W
Pt 6:	48° 21.678'N 089° 13.812'W	Pt 20:	48° 22.044'N 089° 14.058'W
Pt 7:	48° 21.636'N 089° 13.758'W	Pt 21:	48° 22.068'N 089° 14.100'W
Pt 8:	48° 21.570'N 089° 13.656'W	Pt 22:	48° 22.092'N 089° 14.070'W
Pt 9:	48° 21.558'N 089° 13.674'W	Pt 23:	48° 22.062'N 089° 14.034'W
Pt 10:	48° 21.624'N 089° 13.776'W	Pt 24:	48° 22.008'N 089° 13.986'W
Pt 11:	48° 21.642'N 089° 13.800'W	Pt 25:	48° 21.972'N 089° 13.968'W
Pt 12:	48° 21.672'N 089° 13.836'W	Pt 26:	48° 21.966'N 089° 13.950'W
Pt 13:	48° 21.702'N 089° 13.884'W	Pt 27:	48° 21.930'N 089° 13.932'W
Pt 14:	48° 21.720'N 089° 13.920'W		

(NW-C-3060-24)

***1212(T)/24 Nipigon Bay and Approaches/et les approches – Waterway Information:
Shallow Depths Reported**

Reference chart: 2312

Shallow depths reported at the following coordinates:

- 48° 55.084'N 088° 12.705'W : 34.41 metres
- 48° 50.163'N 088° 07.517'W : 47.39 metres
- 48° 47.846'N 088° 05.353'W : 40.96 metres
- 48° 46.635'N 088° 05.030'W : 33.89 metres
- 48° 45.630'N 088° 05.071'W : 8.72 metres
- 48° 44.243'N 088° 05.666'W : 20.05 metres

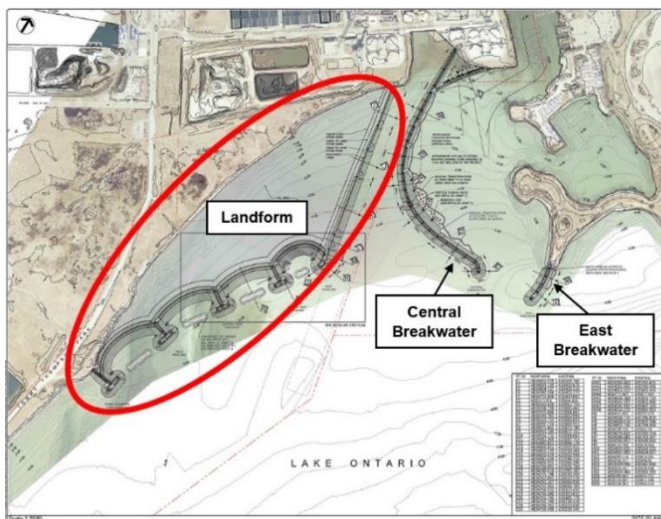
(NW-C-1969-24)

***210(T)/25 Toronto Harbour – Construction Operations**

Reference chart: 2085

Reference: Notice 512(T)/23 is cancelled (Chart 2085).

Construction is taking place at Ashbridge's Bay and consists of the construction of two breakwaters and of a landform. A variety of equipment are being used, including tug boats and barges. Temporary aids to navigation are on site during construction. The operations are scheduled to take at the following positions:.



Breakwater construction operations

43° 39' 20.7"N 079° 18' 48.1"W

Phase 1: Completed

Phase 2: 2021-04-01 through 2025-05-31

Phase 3: 2021-04-01 through 2025-05-31

Landform construction operations

43° 39' 01.4"N 079° 19' 01.9"W

Implementation of the shoreline infill area is expected to take approximately five years.

Mariners are requested to keep out of the construction zone.

Preliminary Notices

Central Region

Comment Submission

Comments on proposed changes in preliminary (P) notices are solicited from mariners and other interested parties within three months of the initial publication date. Following this date, the notices will be cancelled. Any objections raised must state the facts on which they are based and should include supporting information on safety, commerce and public benefit.

Comments should be directed to the following:

Superintendent
Aids to Navigation & Waterways
Canadian Coast Guard, Central Region
1550 D'Estimauville Avenue
Québec, QC G1J 5E9
Telephone: (418) 648-7450
Emails:
St. Lawrence Region: DFO.AtoNStLawrence-StLaurentAalaN.MPO@dfo-mpo.gc.ca
Great Lakes Region:
DFO.CCGCentralAtoNGreatLakes-GrandsLacsAalaNCentreGCC.MPO@dfo-mpo.gc.ca

No notices applicable for this edition.

Arctic Region

Comment Submission

Comments on proposed changes in preliminary (P) notices are solicited from mariners and other interested parties within three months of the initial publication date. Following this date, the notices will be cancelled. Any objections raised must state the facts on which they are based and should include supporting information on safety, commerce and public benefit.

Comments should be directed to the following:

Superintendent,
Aids to Navigation & Waterways
Canadian Coast Guard, Arctic Region
5120 49th Street
Yellowknife NT. X1A 1P8
Telephone: (867) 444-0109
Email: DFO.CCGArcticAidstoNavigation-AidesalanavigationArctiqueGCC.MPO@dfo-mpo.gc.ca

No notices applicable for this edition.

Pacific Coast

Temporary Notices

No notices applicable for this edition.

Preliminary Notices

Western Region

Comment Submission

Comments on proposed changes in preliminary (P) notices are solicited from mariners and other interested parties within three months of the initial publication date. Following this date, the notices will be cancelled. Any objections raised must state the facts on which they are based and should include supporting information on safety, commerce and public benefit.

Comments should be directed to the following:

A/Superintendent, Marc Jourdenais
Aids to Navigation & Waterways
Canadian Coast Guard, Western Region
25 Huron Street
Victoria, BC V8V 4V9
Telephone: (250) 480-2602
Fax: (250) 480-2702
Email: marc.jourdenais@dfo-mpo.gc.ca

***1214(P)/24 Baynes Sound – Range Lights to be Discontinued**

Reference chart: 3527

The Canadian Coast Guard proposes to permanently discontinue the following aids to navigation:

Aid Name	LL #	Position
Courtenay River front range	505	49° 40' 38.0"N 124° 57' 32.3"W
Courtenay River rear range	506	49° 40' 39.7"N 124° 57' 34.4"W

Initial publication date: Friday, December 27, 2024

[Comment submission deadline](#): Thursday, March 27, 2025

(P2024-113)

Other (T) & (P) Notices

Temporary Notices

***1105(T)/15 Canada – Safety of Offshore Exploration and Exploitation Vessels**

Reference: Notice 410(T)/2007 is cancelled.

2015 Annual Edition of Notices to Mariners, Notice No. 20, pages A20-1 to A20-4.

Mariners are advised that offshore exploration and exploitation vessels may be conducting drilling operations in the following areas:

Gulf of St. Lawrence

NIL

Mainland NWT

NIL

Mackenzie Delta NWT/Beaufort Sea

NIL

Arctic Islands of the NWT/Arctic Islands of Nunavut

NIL

Eastern Arctic Offshore

NIL

Davis Strait

NIL

NOTE: Mariners are advised to obtain up-to-date position reports on drilling vessels and production installations before entering an area of exploration and exploitation. This information is available by contacting, as appropriate, ECAREG CANADA, NORDREG CANADA or CVTS OFFSHORE via any Marine Communications and Traffic Services Centre (MCTS).

(NOTSHIP M2215/15) (NEB)

***217(T)/24 Canadian Coast Guard – Obstruction : Scientific Mooring**

Scientific mooring established at position 75° 06' 01.1"N 168° 00' 02.5"W. Top float 42 metres.

(NAVAREA XVII 30/2011)

***1027(T)/24 Canadian Coast Guard – Automatic Identification System (AIS)**

Reference: Notice *111(T)/23 is cancelled.

Mariners are advised that the Canadian Coast Guard (CCG) has brought AIS aids to navigation (AIS AtoN) to full operational capability.

Some AIS AtoN that were deployed in a testing capacity may either be maintained or discontinued at the discretion of CCG Regions, while those deployed outside established CCG levels of service may continue to be maintained in an experimental capacity. Changes to CCG aids to navigation are communicated via Notices to Mariners.

General information on AIS and AIS AtoN is available on the [CCG e-Navigation Maritime Information Portal](#) and in the [Canadian Aids to Navigation System](#). Specific information on deployed AIS AtoN is available on the [e-Navigation](#) website.

***1215(T)/24 Canadian Coast Guard – Automatic Identification System Application
Specific Messages (AIS ASM) Trial**

The Canadian Coast Guard (CCG) is testing Automatic Identification System Application Specific Messages (AIS ASM) nationwide. These broadcasts provide mariners on vessels with properly configured shipborne equipment with dynamic information such as water levels, weather, air gap, and a specific area or line displayed as a digitalized signal. A detailed listing of currently broadcasted Coast Guard AIS ASM is contained in the [interactive map](#) on the Canadian e-Navigation Portal. Additional information on AIS ASM may be found in IMO SN.1 Circ 289 [Guidance on the Use of AIS Application-Specific-Messages](#).

Please contact the manufacturer of your specific equipment for instructions on how to receive AIS ASM. Any questions or concerns related to the broadcast may be directed to the Coast Guard [e-Navigation Team](#) or any Canadian Coast Guard Marine Communications and Traffic Services (MCTS) Centre.

Preliminary Notices

No notices applicable for this edition.