



Fisheries and Oceans
Canada

Pêches et Océans
Canada

Canadian
Coast Guard

Garde côtière
canadienne

Notices to Mariners

Edition No. 02/2022
February 25, 2022



Safety First, Service Always

Monthly Summary of Temporary and Preliminary Notices

Canada 

Notices to Mariners – Monthly Summary of Temporary and Preliminary Notices
Edition No. 02/2022

Aussi disponible en français :
Avis aux navigateurs – Sommaire mensuel des avis temporaires et préliminaires
Édition n° 02/2022

Published under the Authority of:

Canadian Coast Guard Programs
Aids to Navigation and Waterways
Fisheries and Oceans Canada
Montreal, QC H2Y 2E7

For more information, contact Notmar.XNCR@dfo-mpo.gc.ca.

© Her Majesty the Queen in Right of Canada,
as represented by the Minister of Fisheries, Oceans
and the Canadian Coast Guard, 2022.

Cat. No. Fs151-19E-PDF (Electronic PDF, English)
ISSN 2561-5106

Cat. No. Fs151-19F-PDF (Electronic PDF, French)
ISSN 2561-5114

A web version is available here:

<https://www.notmar.gc.ca/temp-pre-monthly> (English)

<https://www.notmar.gc.ca/temp-pre-mensuel> (French)

Explanatory Notes

Geographical positions refer directly to the graduations of the largest scale Canadian Hydrographic Service chart (unless otherwise indicated).

Bearings refer to the true compass and are measured clockwise from 000° (North) clockwise to 359°; those relating to lights are from seaward.

Visibility of lights is that in clear weather.

Depths - The units used for soundings (metres, fathoms or feet) are stated in the title of each chart.

Elevations are normally given above Higher High Water, Large Tide (unless otherwise indicated).

Explanation of Temporary and Preliminary Notices to Mariners

Certain Notices to Mariners appearing in the monthly editions have a (T) or (P) appended to the regular number. These letters indicate that the information contained in the notice is of a temporary or preliminary nature, respectively.

Temporary (T) Notices

If a temporary change in conditions affecting navigation exists and if the change will be effective for a period of over three months, a temporary (T) notice will be published. Temporary changes which are effective for periods of less than three months will not normally be published (unless it is of exceptional interest). Otherwise, information will be promulgated as a Navigational Warning (NAVWARN) by the Canadian Coast Guard Marine Communications and Traffic Services (MCTS) Centre(s) in the affected area. (T) notices will be cancelled as necessary.

Please note that (T) notices with an end date will be automatically cancelled once the end date has passed. In the event of a change to these notices, a new Notice to Mariners will be issued.

Preliminary (P) Notices

- a. When important changes affecting navigation are to take place in the near future, a Notice to Mariners describing the change will be published, so that mariners will have advance information on the change. Such notices will be designated (P).
- b. When a change in conditions affecting navigation has taken place but full information is not available, a preliminary (P) notice giving available information will be published. This notice will be followed by a regular notice when complete information becomes available. The regular notice will cancel the (P) notice.
- c. When a change has taken place which is too complex to describe in a written notice, a (P) notice giving general information will be published. This notice will explain that follow up action will be taken to update charts by publishing patch corrections, new editions or new charts.

Please note that following the expiry of the 90-day comment or objection period, (P) notices describing proposed changes or intention to discontinue will be automatically cancelled. In the event of a change to these notices, a new Notice to Mariners will be issued.

Action Required on Receipt Of (T) & (P) Notices

It is not customary to make permanent corrections to charts and publications from (T) & (P) notices. On receipt of such notices, the information they contain should be noted in pencil on the affected charts and/or publications.

Caution

Mariners are reminded that charts and publications are not corrected from (T) & (P) notices when purchased from suppliers. For the list of charts affected by (T) & (P) notices, please refer to the index on page ii of this publication.

Table of Contents

Newfoundland and Labrador Coast		1
<u>Temporary Notices</u>		
No notices applicable for this edition.....		1
<u>Preliminary Notices</u>		
*1211(P)/21	Bay D'Espoir and / et Hermitage Bay – Light Buoy to be Discontinued.....	1
*104(P)/22	Conception Bay – Fog Horn to be Discontinued	1
Atlantic Coast		2
<u>Temporary Notices</u>		
*111(T)/21	Rivière des Prairies – Construction Operations.....	2
*206(T)/21	Plans, Baie des Chaleurs/Chaleur Bay (côte nord/north shore) – Federal Wharf Closed to Navigation	2
*318(T)/21	Pointe des Monts aux/to Escoumins – Scientific Moorings	2
*508(T)/21	Port de Québec – Wharf Construction.....	2
*207(T)/22	Port de Québec – Obstruction	2
*208(T)/22	Sault-au-Cochon à/to Québec – Waterway Information.....	3
*209(T)/22	Rivière Ristigouche / Restigouche River – Federal Wharf Closed to Navigation.....	3
*210(T)/22	Cap des Rosiers à/to Chandler – Aids to Navigations Temporarily Established	3
<u>Preliminary Notices</u>		
No notices applicable for this edition.....		3
Inland Waters		4
<u>Temporary Notices</u>		
*909(T)/14	Kingston Harbour and Approaches/et les approches – Dock Unserviceable	4
*1005(T)/15	Port Dalhousie – East and West Piers: Access Forbidden	4
*515(T)/16	Harbours on the East Shore of Lake Superior/Ports sur la rive est du lac Supérieur – Buoys Temporarily Discontinued	4
*814(T)/16	Main Duck Island to/à Scotch Bonnet Island – Partially Submerged Fixed Steel Barges	4
*1011(T)/16	Lake Ontario/Lac Ontario (Western Portion/Partie Ouest) – Silting Reported	5
*1218(T)/16	Hamilton Harbour – Silting Reported	5
*1219(T)/16	Toronto to/à Hamilton – Construction Operations	5
*108(T)/17	Harbours in Lake Erie/Havres dans le lac Érié – Unlit Buoys Temporarily Repositioned	5
*309(T)/17	Pelee Passage to/à la Detroit River – Low Water Levels Reported.....	6
*1205(T)/17	Toronto Harbour – Breakwater Entrance to Marina Closed Due to the Collapse of the Breakwater	6
*1206(T)/17	Lake Rosseau and/et Lake Joseph – Unlit Buoy Temporary Established	6
*709(T)/18	Kingston Harbour and Approaches/et les approches – Information Regarding Mooring and Anchoring	6
*809(T)/18	Cobourg to/à Oshawa – Dredging Operations.....	7
*314(T)/20	Toronto Harbour – Construction Operations.....	7

*710(T)/20	Murray Canal to Healey Falls Locks / Murray Canal aux Écluses de Healey Falls – Construction Operations	8
*908(T)/20	Smith Falls to/à Kingston including/y compris Tay River to/à Perth – Construction Operations	9
*1012(T)/20	Kingston Harbour and Approaches/et les approches – Construction Operations.....	9
*1210(T)/20	Demarcation Bay to/à Philips Bay – Mobile Offshore Drilling Unit Temporarily Established.....	9
*112(T)/21	Upper Gap to/à Telegraph Narrows – Construction Operations	9
*413(T)/21	Kingston Harbour and Approaches/et les approches – Aid to navigation temporarily unlit	9
*810(T)/21	Fort Frances to/à Hostess Island and/et Sandpoint Island – Aids to Navigation Temporarily Discontinued	10
*907(T)/21	Lac des Deux Montagnes – Missing Unlit Buoy	10
*1212(T)/21	Point Clark to/à Southampton – Obstruction	10
*107(T)/22	Canal de la Rive Sud – Waterways Information	11
*108(T)/22	Lower Gap to/à Adolphus Reach – Construction Operations Frontenac II Ferry Dock .	11

Preliminary Notices

*211(P)/22	Fort Frances to/à Hostess Island and/et Sandpoint Island – Aid to navigation to be Discontinued.....	11
------------	--	----

Pacific Coast 12

Temporary Notices

*610(T)/21	Laredo Sound – Trial AIS Unit Installed.....	12
*811(T)/21	Plans - Stuart Channel – Marine Works	12

Preliminary Notices

No notices applicable for this edition.....	12
---	----

Other (T) & (P) Notices 13

Temporary Notices

*1105(T)/15	Canada – Safety of Offshore Exploration and Exploitation Vessels	13
*208(T)/21	Canadian Coast Guard – Automatic Identification System (AIS)	13

Preliminary Notices

No notices applicable for this edition.....	14
---	----

List of Charts Affected by (T) & (P) Notices

Chart No.	Pages	Chart No.	Pages	Chart No.	Pages
1236	2	2058	7	4426	3
1316	2	2060	4	4485	3
1317	3	2067	5	4644	1
1429	11	2077	5	4847	1
1509	2	2085	6, 7, 8	4921	2
1510	10	2086	5	6022	6
1513	9	2123	6	6108	10, 11
2006	9	2181	5	7661	9
2017	4, 6, 9	2291	10		
2018	11	2315	4		
2021	8	3475	12		
2044	4	3980	12		

Newfoundland and Labrador Coast

Temporary Notices

No notices applicable for this edition.

Preliminary Notices

Atlantic Region

Comment Submission

Comments on proposed changes in preliminary (P) notices are solicited from mariners and other interested parties within three months of the initial publication date. Following this date, the notices will be cancelled. Any objections raised must state the facts on which they are based and should include supporting information on safety, commerce and public benefit.

Comments should be directed to the following:

Superintendent,
Aids to Navigation & Waterways
Canadian Coast Guard, Atlantic Region
P.O. Box 1000
50 Discovery Drive
Dartmouth, NS B2Y 3Z8
Telephone: (902) 802-3490
Email: Darlene.Sampson@dfo-mpo.gc.ca

***1211(P)/21 Bay D'Espoir and / et Hermitage Bay – Light Buoy to be Discontinued**

Reference chart: 4644

The Canadian Coast Guard proposes to permanently discontinue the following aid to navigation:

Aid Name	LL #	Position
Virgin Rock light buoy VH1	127.35	47° 34' 05.9"N 055° 57' 10.1"W

Initial publication date: Friday, December 31, 2021

[Comment submission deadline](#): Thursday, March 24, 2022

(N2021-260)

***104(P)/22 Conception Bay – Fog Horn to be Discontinued**

Reference chart: 4847

The Canadian Coast Guard proposes to permanently discontinue the fog horn on the following aid to navigation:

Aid Name	LL #	Position
Portugal Cove	497	47° 37' 34.7"N 052° 51' 31.2"W

Initial publication date: Friday, January 28, 2022

[Comment submission deadline](#): Thursday, April 28, 2022

(N2021-270)

Atlantic Coast

Temporary Notices

***111(T)/21 Rivière des Prairies – Construction Operations**

Reference chart: 1509

Repair work is taking place 24 hours a day at the Pie-IX bridge as of August 17th, 2020.

Buoys, jetties, and a turbidity curtain are in place.

(NW-Q-1112-20)

***206(T)/21 Plans, Baie des Chaleurs/Chaleur Bay (côte nord/north shore) – Federal Wharf Closed to Navigation**

Reference: Notice *1118/19 is cancelled.

Reference chart: 4921

The federal wharf at Chandler is closed to navigation. For safety reasons, it is not permitted to berth at the wharf.

For more information, please contact Mr. Simon Bilodeau at Transport Canada at 418-563-2325 or by email at the following address: simon.bilodeau@tc.gc.ca.

(NAVWARN NW-Q-1580-16)

***318(T)/21 Pointe des Monts aux/to Escoumins – Scientific Moorings**

Reference chart: 1236

Over 80 underwater scientific moorings have been placed in the area delimited by the following positions:

Pt 1:	49° 18' 00.7"N	067° 40' 03.6"W
Pt 2:	49° 18' 12.0"N	067° 43' 30.8"W
Pt 3:	49° 17' 31.3"N	067° 43' 32.4"W
Pt 4:	49° 17' 25.3"N	067° 40' 15.5"W

(NW-Q-0968-20)

***508(T)/21 Port de Québec – Wharf Construction**

Reference chart: 1316

Wharf construction is taking place at wharves 93 and 94, Monday to Friday from 1200 UTC until 2300 UTC.

(NW-Q-1975-21)

***207(T)/22 Port de Québec – Obstruction**

Reference chart: 1316

Power boat 6 metres in length reported sunk at 46° 43.830'N 071° 20.000'W.

(NW-Q-1348-21)

***208(T)/22 Sault-au-Cochon à/to Québec – Waterway Information**

Reference chart: 1317

Shallower depth of 5.9 metres located at: 47° 08.911'N 070° 40.591'W.

(NW-Q-0092-22)

***209(T)/22 Rivière Ristigouche / Restigouche River – Federal Wharf Closed to Navigation**

Reference: Notice 716(T)/19 is cancelled.

Reference chart: 4426

The federal wharf at Miguasha is closed to navigation. For reasons of safety and because of the collapsing risk, it is not permitted to berth at the wharf or to come closer than 20 metres from these structures.

For more information, please contact the regional representative of port operations at Transport Canada, Quebec region, M. Hugues Gagnon-Montreuil at 581-398-8378.

(NW-Q-0318-16)

***210(T)/22 Cap des Rosiers à/to Chandler – Aids to Navigations Temporarily Established**

Reference chart: 4485

Yellow private buoys temporarily established in 48° 23.11'N 064° 29.27'W and 48° 23.03'N 064° 29.20'W marking scientific equipment at 25 metres and 31 metres below the surface.

(NW-Q-0413-21)

Preliminary Notices

Atlantic Region

Comment Submission

Comments on proposed changes in preliminary (P) notices are solicited from mariners and other interested parties within three months of the initial publication date. Following this date, the notices will be cancelled. Any objections raised must state the facts on which they are based and should include supporting information on safety, commerce and public benefit.

Comments should be directed to the following:

Superintendent,
Aids to Navigation & Waterways
Canadian Coast Guard, Atlantic Region
P.O. Box 1000
50 Discovery Drive
Dartmouth, NS B2Y 3Z8
Telephone: (902) 802-3490
Email: Darlene.Sampson@dfo-mpo.gc.ca

No notices applicable for this edition.

Inland Waters

Temporary Notices

***909(T)/14 Kingston Harbour and Approaches/et les approches – Dock Unserviceable**

Reference chart: 2017

The Kingston psychiatric hospital dock is unserviceable and out of bounds for use as dockage until further notice.

(NOTSHIP C2409/10)

***1005(T)/15 Port Dalhousie – East and West Piers: Access Forbidden**

Reference chart: 2044

A recent engineering investigation identified structural issues and safety concerns with both the East and West piers at Port Dalhousie. In light of the inspection findings, the Department of Fisheries and Oceans is taking action to protect the safety of the public by prohibiting vessel, vehicular, and pedestrian access to the piers.

Vessels can still safely navigate the waters surrounding the piers, but will be unable to moor at the piers. The City of St. Catharines will accommodate boaters as possible at other local wharves.

Mark Sandeman
Area Manager, Client Services
Small Craft Harbours
Central & Arctic Region
Fisheries and Oceans Canada

3027 Harvester Road, Unit 310
Burlington, ON L7N 3G7
Telephone: (905) 639-2050
Facsimile: (905) 639-5975
Email: mark.sandeman@dfo-mpo.gc.ca

(NOTSHIP C567/15)

***515(T)/16 Harbours on the East Shore of Lake Superior/Ports sur la rive est du lac Supérieur – Buoys Temporarily Discontinued**

Reference chart: 2315

The Canadian Coast Guard has temporarily discontinued the following aids to navigation:
XT1, XT2, XT3, XT4, XT5, XT6, XT7, XT8, XT9, XT10, XT11, XT12.

(NOTSHIP C1045)

***814(T)/16 Main Duck Island to/à Scotch Bonnet Island – Partially Submerged Fixed Steel Barges**

Reference chart: 2060

There are 3 partially submerged fixed steel barges in North end of West Lake (43° 57' 02.3"N 077° 20' 12.8"W), which have been reported just below the water line.

Barges are marked with cautionary buoys.

(NOTSHIP C1641/14)

***1011(T)/16 Lake Ontario/Lac Ontario (Western Portion/Partie Ouest) – Silting Reported**

Reference chart: 2077

Silting reported in main entrance channel to Fifty Point Marina. Centre of channel depth reported to be 1.9 metres with shallower depths on the sides.

Mariners are requested to use caution in the area.

(NOTSHIP C2266/16)

***1218(T)/16 Hamilton Harbour – Silting Reported**

Reference chart: 2067

Silting reported along the North faces of Pier 11 and Pier 12:

Pier 11 North Face between positions 43° 16' 31"N 079° 50' 56"W and 43° 16' 29"N 079° 50' 49"W, and at position 43° 16' 28"N 079° 50' 42"W.

Pier 12 North Face between positions 43° 16' 27"N 079° 50' 39"W and 43° 16' 26"N 079° 50' 33"W.

Mariners are requested to use caution and reduce speed upon arrival and departure. Seaway draft will be affected when water level is less than 0.70 metres above chart datum in these areas.

(NOTSHIP C1831/13)

***1219(T)/16 Toronto to/à Hamilton – Construction Operations**

Reference chart: 2086

Construction operations taking place from November 14, 2016 until approximately 2026 at Lakeview Water Treatment Plant between Marie Curtis Park and Serson Creek. A variety of equipment will be used to expand the land mass along the shoreline. Landfill and 3 islands will be lit and marked.

(NOTSHIP C2533/16)

***108(T)/17 Harbours in Lake Erie/Havres dans le lac Érié – Unlit Buoys Temporarily Repositioned**

Reference chart: 2181

The following unlit spar buoys have been temporarily repositioned due to silting:

Aid Name	LL #	Temporary Changes
ES2	7169	Reposition to 42° 39' 10.0"N 081° 12' 32.0"W
ES3	7170	Reposition to 42° 39' 15.4"N 081° 12' 40.7"W
ES4	7171	Reposition to 42° 39' 16.8"N 081° 12' 37.7"W

The shallowest depth to 3.5M occurs between ES3 and ES4 with the deepest water off the red side of the channel. Mariners are requested to use caution in the area.

(B2017-003)

***309(T)/17 Pelee Passage to/à la Detroit River – Low Water Levels Reported**

Reference chart: 2123

Low water levels have been reported from the south end of the entrance to Sturgeon Creek Harbour northward.

Annette Winter
Project and Divestiture Officer
Small Craft Harbours
Fisheries and Oceans Canada

Canada Centre for Inland Waters (CCIW)
867 Lakeshore Road
Burlington, ON L7S 1A1
Telephone: (905) 315-5286
Email: annette.winter@dfo-mpo.gc.ca

(NOTSHIP C58/13)

***1205(T)/17 Toronto Harbour – Breakwater Entrance to Marina Closed Due to the Collapse of the Breakwater**

Reference chart: 2085

The breakwater entrance to the west of Ontario Place Marina has been closed due to the collapse of the breakwater.

Sub-surface hazards exist in the breakwater gap and on the inner and outer edge of the breakwater wall.

Green spar buoy BW1 has been removed, and 3 white and orange keep out markers have been placed in the breakwater entrance.

The outer edge of the breakwater wall is marked with 2 white and orange keep out markers.

The inner edge of the breakwater wall is marked with 3 white and orange keep out markers.

(NOTSHIP C79/13)

***1206(T)/17 Lake Rosseau and/et Lake Joseph – Unlit Buoy Temporary Established**

Reference chart: 6022

The following unlit buoy has been temporary established:

Aid Name	LL #	Position
P3/1	9089.1	45° 08' 09.0"N 079° 40' 36.0"W

(D2017-006)

***709(T)/18 Kingston Harbour and Approaches/et les approches – Information Regarding Mooring and Anchoring**

Reference: Notice 309(T)/14 is cancelled.

Reference chart: 2017

All mooring or anchoring within the public port of Kingston is prohibited outside of designated marina areas until further notice without authorization from the port official.

Inquiries are to be directed to Transport Canada at (416) 952-0475.

***809(T)/18 Cobourg to/à Oshawa – Dredging Operations**

Reference chart: 2058

Dredging operations in Port Hope Harbour from August 3, 2018 until December 30, 2022. A wave attenuator will block the entrance to the western basin.

Mariners are requested to stay clear of the area.

(NOTSHIP C1951/18)

***314(T)/20 Toronto Harbour – Construction Operations**

Reference: Notice 209(T)/20 is now cancelled.

Reference chart: 2085

Construction is taking place at Ashbridge's Bay and consists of the construction of two breakwaters and of a landform. A variety of equipment will be used, including tug boats and barges. Temporary aids to navigation will be placed prior to and during construction. The operations are scheduled to take at the following positions:

Breakwater construction operations

43° 39' 20.7"N 079° 18' 48.1"W

Phase 1: 2020-04-01 through 2020-12-31

Phase 2: 2021-04-01 through 2021-12-31

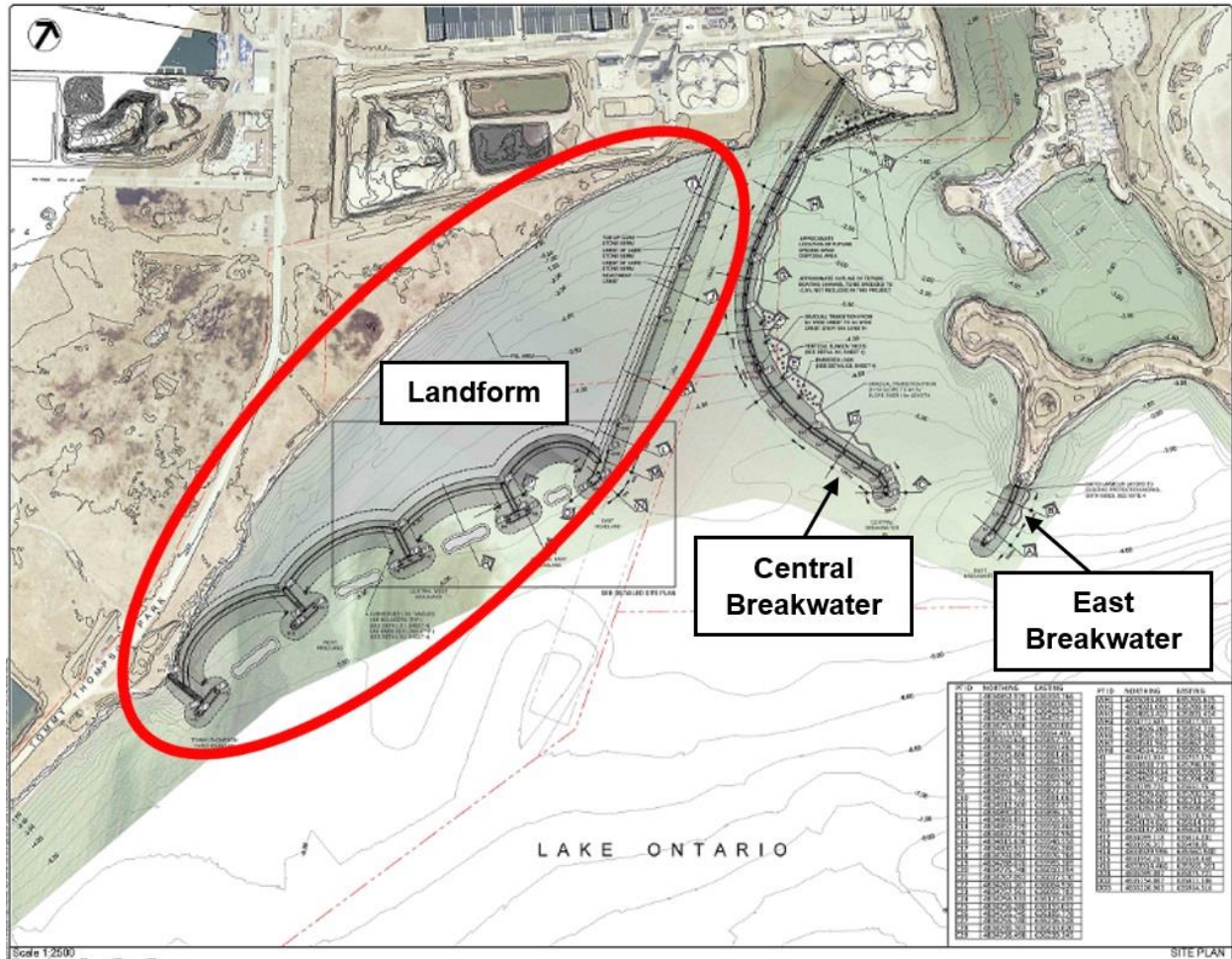
Phase 3: 2022-04-01 through 2022-12-31

Landform construction operations

43° 39' 01.4"N 079° 19' 01.9"W

Implementation of the shoreline infill area is expected to take approximately five years.

Mariners are requested to keep out of the construction zone.



***710(T)/20 Murray Canal to Healey Falls Locks / Murray Canal aux Écluses de Healey Falls – Construction Operations**

Reference chart: 2021

Construction operations, including diving operations, in progress as of July 6, 2020 between 1100 UTC and 0100 UTC at the mouth of the Trent River south of Dundas Street bridge in Trenton. The site is marked with red, green and white markers. Tug and barge on site, lit at night.

Vessels are advised to use caution when transiting the area and to keep clear of construction operations. Call 416-729-8830 for further details.

(NW-C-1012-20)

***908(T)/20 Smith Falls to/à Kingston including/y compris Tay River to/à Perth –
Construction Operations**

Reference chart: 1513

Temporary closures of up to 30 minutes are expected in the navigation channel at the Third Crossing Bridge construction site. Spotter boats will be positioned 100 metres north and south of the bridge during work hours.

Installation of a temporary causeway is taking place between 44° 15.41'N 076° 28.78'W and 44° 15.52'N 076° 27.99'W.

(NW-C-3042-19, NW-C-1479-20)

***1012(T)/20 Kingston Harbour and Approaches/et les approches – Construction
Operations**

Reference chart: 2017

Wharf construction is taking place daily from 1100 UTC to 2300 UTC at the Kingston-Wolfe Island ferry terminal. The ferry remains operational. Vessels are not permitted to dock on the south side. The construction area is marked and lit.

(NW-C-1786-20)

***1210(T)/20 Demarcation Bay to/à Philips Bay – Mobile Offshore Drilling Unit Temporarily
Established**

Reference: Notice 616(T)/07 is cancelled.

Reference chart: 7661

The unmanned mobile offshore drilling unit “SDC” continues to be temporarily established at 69° 24.71'N 138° 53.76'W. The structure is 202.4 metres long and 53 metres wide.

For information, contact Captain Connelly at 1-250-598-4513 or 1-250-744-9818 or e-mail at doncon@islandnet.com or dcmarine@shaw.ca.

***112(T)/21 Upper Gap to/à Telegraph Narrows – Construction Operations**

Reference chart: 2006

Construction operations are currently underway on the Bay of Quinte Skyway Bridge.

During these operations, lit barges are on site and the bridge clearance is 19 metres.

(NW-C-2834-19)

***413(T)/21 Kingston Harbour and Approaches/et les approches – Aid to navigation
temporarily unlit**

Reference chart: 2017

The following aid to navigation is temporarily unlit:

Marysville Wharf light (LL 399.3): 44° 11' 42.4"N 076° 26' 27.3"W

(NW-C-1802-20)

***810(T)/21 Fort Frances to/à Hostess Island and/et Sandpoint Island – Aids to Navigation Temporarily Discontinued**

Reference chart: 6108

The following aids to navigation are temporarily discontinued:

Aid Name	LL #	Position
Noden Causeway East	1465	48° 39' 08.5"N 093° 18' 47.6"W
Noden Causeway West	1466	48° 39' 08.5"N 093° 18' 49.1"W

(D2021-026T, 027T)

***907(T)/21 Lac des Deux Montagnes – Missing Unlit Buoy**

Reference chart: 1510

The following unlit buoy is currently missing and will not be replaced before the 2022 navigation season:

Aid Name	LL #	Position
Chenal Saint-Placide buoy HJ17	6251.68	45° 31' 20.7"N 074° 12' 25.1"W

(NW-Q-1526-20)

***1212(T)/21 Point Clark to/à Southampton – Obstruction**

Reference chart: 2291

Twenty-two spar buoys have been removed and replaced by twenty-five sub-surface moorings at the following coordinates:

44° 13.920'N 081° 37.052'W	44° 22.755'N 081° 32.371'W
44° 13.952'N 081° 37.349'W	44° 22.918'N 081° 33.910'W
44° 13.972'N 081° 38.189'W	44° 23.524'N 081° 31.894'W
44° 15.855'N 081° 36.669'W	44° 23.963'N 081° 32.771'W
44° 15.890'N 081° 37.469'W	44° 25.258'N 081° 29.403'W
44° 15.895'N 081° 37.030'W	44° 25.267'N 081° 29.408'W
44° 19.848'N 081° 36.472'W	44° 26.068'N 081° 30.791'W
44° 19.860'N 081° 36.561'W	44° 33.435'N 081° 19.627'W
44° 20.657'N 081° 33.770'W	44° 33.493'N 081° 19.801'W
44° 20.971'N 081° 33.549'W	44° 34.181'N 081° 21.229'W
44° 21.367'N 081° 34.154'W	44° 56.731'N 081° 23.670'W
44° 21.673'N 081° 34.630'W	44° 57.377'N 081° 23.299'W
44° 22.064'N 081° 34.981'W	

(NW-C-2095-21)

***107(T)/22 Canal de la Rive Sud – Waterways Information**

Reference chart: 1429

Inspection work taking place under the Champlain bridge Monday to Friday from 1000 UTC until 1900 UTC. Tug "Intense" and barge are on site and will be lit and marked at night. Tug "Intense" monitoring VHF channel 79.

(NW-Q-1179-20)

***108(T)/22 Lower Gap to/à Adolphus Reach – Construction Operations Frontenac II Ferry Dock**

Reference chart: 2018

Construction operations are taking place daily during daylight hours at the Millhaven and Stella ferry docks. Temporary docks will be installed in the vicinity of the ferry docks. Docks will be marked with buoys and lit with amber lights.

(NW-C-2916-17)

Preliminary Notices

Central Region

Comment Submission

Comments on proposed changes in preliminary (P) notices are solicited from mariners and other interested parties within three months of the initial publication date. Following this date, the notices will be cancelled. Any objections raised must state the facts on which they are based and should include supporting information on safety, commerce and public benefit.

Comments should be directed to the following:

Superintendent, Mathieu Roy
Aids to Navigation & Waterways
Canadian Coast Guard, Central Region
1550 D'Estimauville Avenue
Québec, QC G1J 5E9
Telephone: (418) 648-7450
Email: mathieu.roy@dfo-mpo.gc.ca

***211(P)/22 Fort Frances to/à Hostess Island and/et Sandpoint Island – Aid to navigation to be Discontinued**

Reference chart: 6108

The Canadian Coast Guard proposes to permanently discontinue the following aid to navigation:

Aid Name	LL #	Position
Fort Frances Ranier Bridge light	1468	48° 36' 50.5"N 093° 22' 01.9"W

Initial publication date: Friday, February 25, 2022

[Comment submission deadline](#): Thursday, May 26, 2022

(D2022-003)

Pacific Coast

Temporary Notices

***610(T)/21 Laredo Sound – Trial AIS Unit Installed**

Reference chart: 3980

Jaffrey Rock light and whistle buoy E64 (LL 622- MMSI 993161103) has been equipped with AIS Aids to Navigation System, providing position information. This system is part of a Canadian Coast Guard trial.

Please visit <http://www.marinfo.gc.ca/e-nav/> for more information about the trial.

Mariners are encouraged to submit their comments to Prince Rupert MCTS Centre

(P2021-013)

***811(T)/21 Plans - Stuart Channel – Marine Works**

Reference chart: 3475

Log booming at 48° 59.672'N 123° 48.201'W to 49° 00.551'N 123° 49.510'W.

Hours of operation are Monday to Friday from 1300UTC until 0100UTC.

Caution. Minimum wake during hours of operation.

(NW-P-1003-21)

Preliminary Notices

Western Region

Comment Submission

Comments on proposed changes in preliminary (P) notices are solicited from mariners and other interested parties within three months of the initial publication date. Following this date, the notices will be cancelled. Any objections raised must state the facts on which they are based and should include supporting information on safety, commerce and public benefit.

Comments should be directed to the following:

Superintendent, Glenna Evans
Aids to Navigation & Waterways
Canadian Coast Guard, Western Region
25 Huron Street
Victoria, BC V8V 4V9
Telephone: (250) 480-2602
Fax: (250) 480-2702
Email: glenna.evans@dfo-mpo.gc.ca

No notices applicable for this edition.

Other (T) & (P) Notices

Temporary Notices

***1105(T)/15 Canada – Safety of Offshore Exploration and Exploitation Vessels**

Reference: Notice 410(T)/2007 is cancelled.

2015 Annual Edition of Notices to Mariners, Notice No. 20, pages A20-1 to A20-4.

Mariners are advised that offshore exploration and exploitation vessels may be conducting drilling operations in the following areas:

Gulf of St. Lawrence

NIL

Mainland NWT

NIL

Mackenzie Delta NWT/Beaufort Sea

NIL

Arctic Islands of the NWT/Arctic Islands of Nunavut

NIL

Eastern Arctic Offshore

NIL

Davis Strait

NIL

NOTE: Mariners are advised to obtain up-to-date position reports on drilling vessels and production installations before entering an area of exploration and exploitation. This information is available by contacting, as appropriate, ECAREG CANADA, NORDREG CANADA or CVTS OFFSHORE via any Marine Communications and Traffic Services Centre (MCTS).

(NOTSHIP M2215/15) (NEB)

***208(T)/21 Canadian Coast Guard – Automatic Identification System (AIS)**

Reference: Notice *819(T)/16 is cancelled.

AIS Aids to Navigation (AtoNs)

Mariners are advised that the Canadian Coast Guard (CCG) is continuing to conduct supervised test beds of AIS AtoNs, with the objective of bringing AIS AtoNs to Full Operational Capability (FOC). Specific information on AIS AtoN test bed sites can be found on the CCG e-Navigation Maritime Information Portal at <http://www.marinfo.gc.ca/e-nav/docs/ais-aton-locations-eng.php>.

Although AIS was originally developed as a collision avoidance tool for vessels, it also allows for the broadcasting of other types of data, such as the AIS AtoN “Message 21” (AIS AtoN Report).

Ships need to be equipped with standard shipborne AIS equipment for the display of AIS messages. The IMO mandatory carriage requirement for the Class “A” AIS display is the Minimum Keyboard Display (MKD), however, the display and use of the AtoN information may require additional hardware and/or software such as an AIS-connected Electronic Chart Display and Information System (ECDIS), Electronic Chart System (ECS), Radar or Portable Pilot Unit (PPU).

As the AIS information available to mariners will be dependent on their display system and its compliance with the latest IMO and IALA standards, some transmitted information may not be displayed or may have a different symbol. Mariners are encouraged to install and upgrade systems that provide AIS overlay on ECDIS, ECS and/or Radar. Mariners should be familiar with the display settings on their vessel's shipborne equipment.

All geographical positions (latitude and longitude) are based on the WGS 84 datum; time is displayed in Coordinated Universal Time (UTC).

CCG is making every effort to broadcast quality information; however, as with any navigational tool, mariners should not rely on this information as their sole means of navigation.

Mariners are advised to consult the CCG e-Navigation web page on AIS AtoN, accessible at <http://www.marinfo.gc.ca/e-nav/docs/ais-aton-index-eng.php> for pertinent information, including examples of AIS AtoN display and symbology.

Individual NAVWARNs and/or NOTMARs are rarely issued for AIS AtoN trials.

Mariners are requested to provide feedback on the AIS AtoN test beds to the CCG e-Navigation Team at ccg.enav.gcc@dfo-mpo.gc.ca. In addition, mariners who wish to participate in CCG's questionnaire on AIS AtoN are invited to access it at <http://www.marinfo.gc.ca/e-nav/docs/asm-aton-survey-eng.php>. The collected results will guide the CCG in further developing this information service.

Preliminary Notices

No notices applicable for this edition.