



Canadian
Coast Guard

Garde côtière
canadienne

Notices to Mariners

Edition No. 05/2026
May 29, 2026



Safety First, Service Always

Monthly Western Edition

Canada 

Notices to Mariners – Monthly Western Edition
Edition No. 05/2026

Aussi disponible en français :
Avis aux navigateurs – Édition mensuelle de l'Ouest
Édition n° 05/2026

Published under the Authority of:

Canadian Coast Guard Programs
Aids to Navigation and Waterways
Montreal, QC H2Y 2E7

For more information, contact DFO.Notmar-Notmar.MPO@dfo-mpo.gc.ca.

© His Majesty the King in Right of Canada,
as represented by the Canadian Coast Guard, 2026.

Cat. No. D16-3E-PDF (Electronic PDF, English)
ISSN 2817-0253

Cat. No. D16-3F-PDF (Electronic PDF, French)
ISSN 2817-0261

A web version is available here:

[Notices to Mariners – Monthly Editions](#) (English)

[Avis aux navigateurs – Publications mensuelles](#) (French)

Explanatory Notes – Notices to Mariners (NOTMAR)

Geographical positions refer directly to the graduations of the largest scale Canadian Hydrographic Service chart (unless otherwise indicated).

Bearings refer to the true compass and are measured clockwise from 000° (North) clockwise to 359°; those relating to lights are from seaward.

Visibility of lights is that in clear weather.

Depths - The units used for soundings (metres, fathoms or feet) are stated in the title of each chart.

Elevations are normally given above Higher High Water, Large Tide (unless otherwise indicated).

Distances may be calculated as follows:

- 1 nautical mile = 1,852 metres (6,076.1 feet)
- 1 statute mile = 1,609.3 metres (5,280 feet)
- 1 metre = 3.28 feet

Temporary and Preliminary Notices to Mariners – Section 1A of *Notices to Mariners*

These notices are indicated by a (T) or a (P), respectively. Please note that nautical charts are not amended by the Canadian Hydrographic Service for temporary (T) and preliminary (P) notices. It is recommended that mariners chart these corrections in pencil. For the list of charts affected by (T) & (P) notices, please refer to the current [Notices to Mariners - Monthly Summary of Temporary and Preliminary Notices](#) publication.

Suggestions and Corrections Form

This form is specifically for suggestions and corrections to Notices to Mariners publications. It is available [online](#) and also in [fillable PDF format](#) included with the monthly publication ZIP file.

To submit comments and suggestions on possible improvements to the various publications and services: DFO.Notmar-Notmar.MPO@dfo-mpo.gc.ca.

To report chart discrepancies and/or corrections to the *Canadian Sailing Directions* booklets: Fill out the [Marine Information Reporting Form](#) and/or email chsinfo@dfo-mpo.gc.ca.

To report emergencies or navigational hazards: [Contact your nearest MCTS centre](#)

- VHF channel 16 (156.8 MHz)
- MF/HF frequency 2182 kHz/4125 kHz (where available)
- *16 on a cellphone (where available)

NOTMAR Website – Monthly Editions, Chart Corrections and Chart Patches

The NOTMAR website allows users to access the [monthly publications](#), [chart corrections](#), and [chart patches](#).

Users can subscribe for free to the [email notification service](#) to receive notifications when charts of interest are updated, including their patches, as well as when a new Monthly Edition of *Notices to Mariners* is published.

In addition, the monthly publication and related files to download, such as chart patches, can be obtained all together through the download of a single ZIP file.

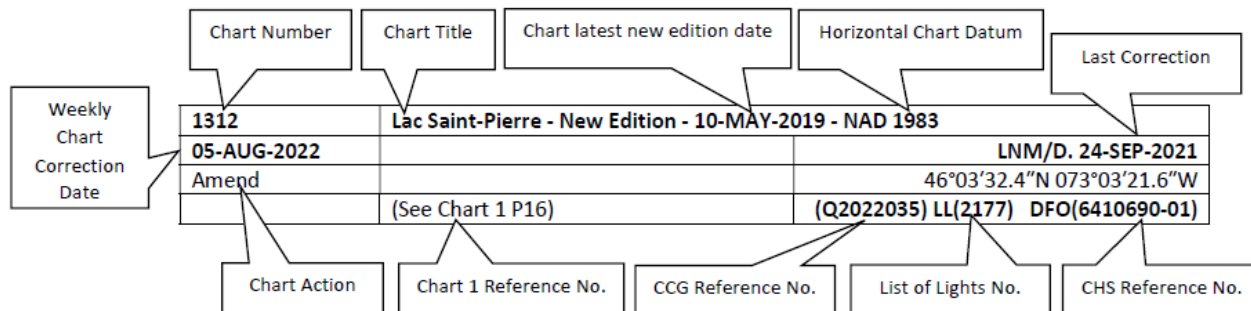
Explanatory Notes – Canadian Hydrographic Service (CHS)

Chart Corrections – Section 2 of *Notices to Mariners*

Corrections to nautical charts will be listed in numerical order by chart number. Each chart correction listed applies only to that particular chart. Related charts, if any, will have their own specific correction listed separately.

Users should also refer to CHS *Chart 1: Symbols, Abbreviations and Terms* for additional information pertaining to the correction of charts.

The illustration below describes the elements that will comprise a typical Section 2 chart correction:



The last correction number is identified with the **LN/D** or **Last Notice to Mariners Number / Date**.

Mariners are advised that only the most critical changes that directly affect safety to navigation are issued in “Section 2 – Chart Corrections.” This limitation is required to ensure that charts remain as clear and easy to read as possible. As a result, mariners may see minor discrepancies of a non-critical nature between information in official publications. For example, a small change in the nominal range or focal height of a light may not result in the production of a chart correction in Notices to Mariners, but may result in a correction in the [List of Lights, Buoys and Fog Signals](#) publication.

Note: In the case of a discrepancy between information provided on CHS charts relating to aids to navigation, and the *List of Lights, Buoys and Fog Signals* publication, the latter shall be deemed as containing the most up-to-date information.

Explanatory Notes – Marine Communications and Traffic Services (MCTS)

Navigational Warnings / Notices to Shipping

The Canadian Coast Guard (CCG) is implementing a number of changes to the aids to navigation system in Canada.

These changes are advertised as Navigational Warnings, formerly called Notices to Shipping¹, that are broadcast by the CCG, and are then followed up with Notices to Mariners, then charts are updated by hand correction, reprints or new editions.

Mariners are advised that all relevant Navigational Warnings (NAVWARN) should be kept until superseded by Notices to Mariners or through revised charts issued by the Canadian Hydrographic Service (CHS).

NAVWARN are accessible on the applicable regional page on the [CCG Navigational Warnings](#).

CHS is reviewing the impact of these changes with CCG and together are preparing an action plan on the issuing of chart revisions.

For further information, contact your regional NAVWARN Issuing Desk.

<p>Western Region Prince Rupert MCTS Centre</p> <p>“P” Series NAVWARN</p> <p>Canadian Coast Guard Bag 4444 Prince Rupert, BC V8J 4K2</p> <p>Telephone: 250-627-3070</p> <p>Email: NAVWARN.MCTSPrinceRupert@innav.gc.ca</p>	<p>Arctic Region *Iqaluit MCTS Centre</p> <p><i>Operational from approximately mid-May until late December.</i></p> <p>“A” Series NAVWARN</p> <p>Canadian Coast Guard P.O. Box 189 Iqaluit, NU X0A 0H0</p> <p>Telephone: 867-979-5269 Facsimile: 867-979-4264</p> <p>Email: NAVWARN.MCTSIqaluit@innav.gc.ca</p>
--	--

*Service available in English and in French.

¹ The expression “Notice to Shipping” was changed to “Navigational Warning” in January 2019.

Table of Contents

Section 1: General and Safety Information	1
*505/23 Canadian Hydrographic Service – Magnetic Declination Calculations	1
*1207/23 Canadian Hydrographic Service – Inappropriate Geographical Names Review Process	1
*208/24 West Coast Haida Gwaii – Voluntary Protection Zone for Shipping	1
*1105/24 Transport Canada – British Columbia North Coast Waterway Management Guidelines	2
*501/26 Canadian Hydrographic Service – Nautical Charts	4
*502/26 Canadian Hydrographic Service – Electronic Navigational Charts	4
*503/26 Canadian Hydrographic Service – Raster Digital Charts (BSB V3)	6
*504/26 Transport Canada - Ship Safety Bulletin #05/2026	6
*505/26 Anguniaqvia Niqiqyuam Marine Protected AreaS (ANMPA), Tarium Nirytutait Marine Protected Areas (TNMPA) and Beluga and Bowhead Whale Protection: Voluntary Avoidance and Slowdown Areas	7
*506/26 Canadian Coast Guard Publication - Amendments to the <i>Notices to Mariners Annual Edition 2026</i> - Section A2, Notice 5: General Guidelines for Aquatic Species at Risk and Important Marine Mammal Areas	10
*507/26 Canadian Coast Guard Publication - Amendments to the <i>Notices to Mariners Annual Edition 2026</i> - Section A2, Notice 5A: General Requirements for Oceans Act Marine Protected Areas and Fisheries Act Marine Refuges	10
Section 1A: Temporary and Preliminary Notices	13
Reminder – Comment Period for Active Preliminary Notices	13
*516(P)/26 Coronation Gulf Western Portion/Partie Ouest – Daybeacon to be Discontinued	13
*517(P)/26 Coronation Gulf Eastern Portion/Partie Est – Daybeacons to be Discontinued	14
*518/26 Halibut Bank to/à Ballenas Channel – ODAS Buoy Retrieved	14
Section 2: Chart Corrections	15
Section 3: Radio Aids to Marine Navigation Corrections	23
*519/26 Radio Aids to Marine Navigation 2026 (Atlantic, St. Lawrence, Great Lakes, Lake Winnipeg, Arctic and Pacific)	23
Section 4: Canadian Sailing Directions Corrections	28
Section 5: List of Lights, Buoys and Fog Signals Corrections	29

Numerical Index of Canadian Charts Affected

This numerical index lists all nautical charts mentioned in this monthly edition of Notices to Mariners. Only charts appearing in Section 2 of this publication require a chart correction. The appearance of charts in all other sections, particularly those related to the correction of other nautical publications, is included here for reference.

Chart No.	Pages	Chart No.	Pages	Chart No.	Pages
3012	4				
3061	15				
3441	15				
3442	15, 16				
3456	14				
3462	16				
3478	16				
3479	16, 17				
3489	17				
3490	13, 17				
3491	17				
3512	17				
3513	18, 19				
3514	19				
3527	19				
3533	20				
3538	20				
3554	21				
3670	21				
3671	21				
3673	21				
3936	22				
7777	13				
7778	14				

Section 1: General and Safety Information

***505/23 Canadian Hydrographic Service – Magnetic Declination Calculations**

(Recurrent publication of notice *505/23, originally published in the *Notices to Mariners – Monthly Western Edition 05/2023* publication.)

Mariners are advised that CHS has adopted the harmonized World Magnetic Model (WMM), as found on the NCEI/NOAA website. Old compass rose declination information on CHS navigational products can be updated using the [Magnetic Declination Estimated Value](#) website. While the differences in the model declinations are small each year, they can become more significant over a large period of time.

***1207/23 Canadian Hydrographic Service – Inappropriate Geographical Names Review Process**

(Recurrent publication of notice *1207/23, originally published in the *Notices to Mariners – Monthly Western Edition 12/2023* publication.)

The records of the Canadian Hydrographic Service could contain geographical names that may be considered inappropriate, offensive and derogatory. Geographical naming authorities are in the process of addressing many offensive place names, the review process is underway. For more information, about inappropriate geographical names, please see the [following announcement](#).

***208/24 West Coast Haida Gwaii – Voluntary Protection Zone for Shipping**

(Recurrent publication of notice *208/24, originally published in the *Notices to Mariners – Monthly Western Edition 02/2024* publication.)

Reference: Notice *1105/21 is cancelled.

Voluntary Protection Zone for Shipping, western shore of Haida Gwaii (formerly Queen Charlotte Islands)

Haida Gwaii's remote location, rugged coastline, variable sea and weather conditions, and rich ecological and cultural heritage make it vulnerable to the potential for pollution from shipping breakdowns and accidents. Increasing the distance vessels travel offshore can increase the amount of time available to address propulsion, steering or other issues, and the likelihood of a towing vessel being able to respond to a vessel in distress or drifting. This in turn reduces the risk of grounding and oil spills.

A Voluntary Protection Zone for Shipping on the western shore of Haida Gwaii is currently in effect. In the Voluntary Protection Zone, commercial vessels of 500 gross tonnage or greater are requested to observe a minimum distance of 50 nautical miles from the western shore of Haida Gwaii with the following exemptions:

Exemptions from requested 50 nm distance:

- Cruise vessels, which are asked to observe a minimum 12 nm distance from shore;
- Vessels transiting from Alaska to British Columbia or Washington State, or vice versa, through the Voluntary Protection Zone are asked to observe a distance of at least 25 nm from shore
- No minimum distance is requested for tugs and barges (including pushing and towing alongside) or vessels engaged in commercial fishing.
- Vessels to which this bulletin applies are not required to observe requested minimum distances if doing so may compromise navigational, vessel, passenger or cargo safety.

The Voluntary Protection Zone for Shipping coordinates are:

54° 15.436' N 133° 04.788' W
54° 17.572' N 134° 02.484' W
54° 13.614' N 134° 19.427' W
54° 11.786' N 134° 30.841' W
53° 44.036' N 134° 32.677' W
53° 11.118' N 134° 16.412' W
52° 18.483' N 133° 20.917' W
51° 24.590' N 132° 04.081' W
51° 56.158' N 131° 01.830' W

Vessels are requested to adhere to these distances on a voluntary basis and only when it does not jeopardize the safety of navigation, the vessel, the persons onboard, and the cargo.



***1105/24 Transport Canada – British Columbia North Coast Waterway Management Guidelines**

(Recurrent publication of notice *1105/24, originally published in the *Notices to Mariners – Monthly Western Edition 11/2024* publication.)

Reference: Notice *1004/23 is cancelled.

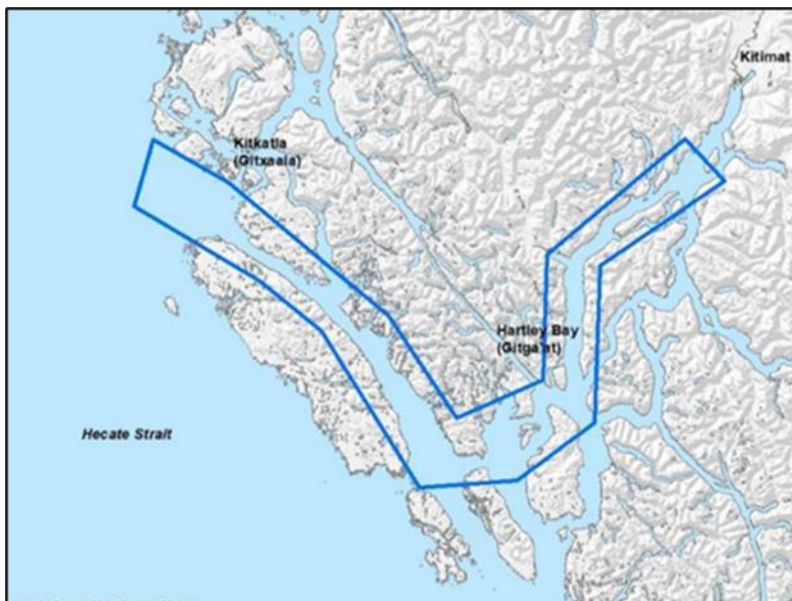
The North Coast Waterway Management Guidelines are voluntary guidelines that aim to improve safety on the water by reducing conflicts between First Nations' marine use activities, such as fishing and shoreline harvesting, and commercial vessels on the shipping route between Kitimat and Browning Entrance. The guidelines came into effect on September 1, 2022, and will be reviewed from time to time.

The guidelines apply to all vessels navigating on the route between Kitimat and Browning Entrance, on the north coast of British Columbia. This area includes:

- Douglas Channel
- Wright Sound
- Lewis Passage
- Otter Channel
- Nepean Sound, and
- Principe Channel

The complete guidelines document is available at [British Columbia North Coast Waterway Management Guidelines](#).

Nothing in these guidelines replaces or changes how we apply any Canadian or international laws or regulations, including the Collision Regulations. Furthermore, nothing in these guidelines prevents or limits the master or pilot of a ship from making any decisions to protect the vessel, the crew, or the marine environment.



The guidelines include information for:

- all vessels that covers:
 - inshore safety zones
 - routing measures
 - speed reductions
 - guidelines for meeting and passing
 - a special operating area in Wright Sound, and
 - guidelines in case of a mechanical or electrical breakdown
- large commercial ships, including bulk carriers, general cargo vessels, liquid bulk vessels, and passenger vessels
- tugs and barges, and
- vessels operating in First Nations Areas of Concern where you must pay special attention to make sure local community users can transit and use the area safely.

***501/26 Canadian Hydrographic Service – Nautical Charts**

Charts	Main Title	Version Date	Release Date
New Editions			
3012	Queen Charlotte Sound to / à Dixon Entrance	2026-04-10	2026-05-29

***502/26 Canadian Hydrographic Service – Electronic Navigational Charts**

S-57 & S-101 ENC Number	Chart Title	Usage	Published
New Products			
101CA00P451N0660W (Edn 2.000)	101CA00P451N0660W	PORT	2026-05-01
CA493LLA (Edn 1.000)	CA493LLA	TRANSIT	2026-05-01
CA493LWA (Edn 1.000)	CA493LWA	TRANSIT	2026-05-01
CA49DNQA (Edn 1.000)	CA49DNQA	TRANSIT	2026-05-01
CA49DP1A (Edn 1.000)	CA49DP1A	TRANSIT	2026-05-01
CA49DPBA (Edn 1.000)	CA49DPBA	TRANSIT	2026-05-01
CA4BHKPA (Edn 2.000)	Transit700N0790W	TRANSIT	2026-05-01
CA53VLKA (Edn 1.000)	CA53VLKA	PORT	2026-05-01
CA53VLLA (Edn 1.000)	CA53VLLA	PORT	2026-05-01
CA53VLMA (Edn 1.000)	CA53VLMA	PORT	2026-05-01
CA53WLMA (Edn 1.000)	CA53WLMA	PORT	2026-05-01
CA53WLNA (Edn 1.000)	CA53WLNA	PORT	2026-05-01
CA53XLNA (Edn 1.000)	CA53XLNA	PORT	2026-05-01
CA53XLPA (Edn 1.000)	CA53XLPA	PORT	2026-05-01
CA53YLPA (Edn 1.000)	CA53YLPA	PORT	2026-05-01
CA540LNA (Edn 1.000)	CA540LNA	PORT	2026-05-01
CA540LPA (Edn 1.000)	CA540LPA	PORT	2026-05-01
CA541LNA (Edn 1.000)	CA541LNA	PORT	2026-05-01
CA541LPA (Edn 1.000)	CA541LPA	PORT	2026-05-01
CA542LNB (Edn 1.000)	CA542LNB	PORT	2026-05-01
CA542LPB (Edn 1.000)	CA542LPB	PORT	2026-05-01
CA544QUA (Edn 1.000)	Antigonish Harbour	PORT	2026-05-01
CA544QVA (Edn 1.000)	Antigonish Harbour	PORT	2026-05-01
CA545QVA (Edn 2.000)	CA545QVA	PORT	2026-04-24
CA594LYA (Edn 1.000)	CA594LYA	PORT	2026-05-01
CA594M0A (Edn 1.000)	CA594M0A	PORT	2026-05-01
CA595LPA (Edn 1.000)	CA595LPA	PORT	2026-05-01
CA595LQA (Edn 1.000)	CA595LQA	PORT	2026-05-01
CA595LYA (Edn 1.000)	CA595LYA	PORT	2026-05-01
CA59ANFA (Edn 1.000)	CA59ANFA	PORT	2026-05-01

S-57 & S-101 ENC Number	Chart Title	Usage	Published
CA59ANGA (Edn 1.000)	CA59ANGA	PORT	2026-05-01
CA59ANHA (Edn 1.000)	CA59ANHA	PORT	2026-05-01
CA59BNFA (Edn 1.000)	CA59BNFA	PORT	2026-05-01
CA59BNGA (Edn 1.000)	CA59BNGA	PORT	2026-05-01
CA59NF1A (Edn 1.000)	Port6390N09440W	PORT	2026-05-01
CA59NF2A (Edn 1.000)	Port6390N09430W	PORT	2026-05-01
CA59NF3A (Edn 1.000)	Port6390N09420W	PORT	2026-05-01
CA59PF0A (Edn 1.000)	Port6400N09450W	PORT	2026-05-01
CA59PF1A (Edn 1.000)	Port6400N09440W	PORT	2026-05-01
CA59PF2A (Edn 1.000)	Port6400N09430W	PORT	2026-05-01
CA59PF3A (Edn 1.000)	Port6400N09420W	PORT	2026-05-01
CA59QF0A (Edn 1.000)	Port6409N09450W	PORT	2026-05-01
CA59QF1A (Edn 1.000)	Port6409N09440W	PORT	2026-05-01
CA59QF2A (Edn 1.000)	Port6409N09430W	PORT	2026-05-01
CA59REHA (Edn 1.000)	Port6420N09610W	PORT	2026-05-01
CA59SEHA (Edn 1.000)	Port6430N09610W	PORT	2026-05-01
CA5B3CRA (Edn 2.000)	Port6859N10190W	PORT	2026-05-01
CA5B3CSA (Edn 2.000)	Port6859N10180W	PORT	2026-05-01
CA5B4ALA (Edn 2.000)	Port6870N10900W	PORT	2026-05-01
New Editions			
CA45FRFA (Edn 4.000)	Transit5000N06000W	TRANSIT	2026-05-15
CA471013 (Edn 3.000)	Hippa Island	TRANSIT	2026-05-01
CA471109 (Edn 3.000)	CA471109	TRANSIT	2026-05-01
CA471110 (Edn 3.000)	CA471110	TRANSIT	2026-05-01
CA471111 (Edn 3.000)	CA471111	TRANSIT	2026-05-01
CA471112 (Edn 3.000)	CA471112	TRANSIT	2026-05-01
CA471139 (Edn 3.000)	CA471139	TRANSIT	2026-05-01
CA471140 (Edn 3.000)	CA471140	TRANSIT	2026-05-15
CA471145 (Edn 2.000)	CA471145	TRANSIT	2026-05-01
CA471147 (Edn 2.000)	CA471147	TRANSIT	2026-05-01
CA471148 (Edn 2.000)	CA471148	TRANSIT	2026-05-01
CA53XMDA (Edn 2.000)	Port4500N07340W	PORT	2026-04-24
CA53YPMA (Edn 2.000)	Saint John Harbour and Approaches / et les approches	PORT	2026-05-01
CA54QQYA (Edn 2.000)	Port4760N06160W	PORT	2026-04-24
CA54RQ1A (Edn 3.000)	CA54RQ1A	PORT	2026-05-01
CA55HQ0A (Edn 3.000)	Port5020N06480W	PORT	2026-04-24

S-57 & S-101 ENC Number	Chart Title	Published
Charts Permanently Withdrawn		
CA373066	Jackfish Bay to St. Ignace Island	2026-05-29
CA373067	Oiseau Bay to Jackfish Bay	2026-05-29
CA373070	Passage Island to/à Thunder Bay	2026-05-29
CA373072	West of Michipicoten Island to Simons Harbour	2026-05-29
CA373086	Cape Gargantua to/à Otter Head	2026-05-29
CA373110	Coppermine Point to Cape Gargantua	2026-05-29
CA373291	Nipigon Bay and Approaches	2026-05-29
CA373473	Culbertson Island to/à Koojesse Inlet	2026-05-01
CA473379	Deception Bay	2026-05-01
CA473456	Approaches to/ Approches à Koojesse Inlet	2026-05-01
CA473474	Pike-Resor Channel	2026-05-01
CA473475	Culbertson Island to/à Frobisher's Farthest	2026-05-01
CA473485	Sugluk Inlet	2026-05-01
CA4BHKDA	CA4BHKDA	2026-05-01
CA573136	Quebec Harbour	2026-05-29
CA573376	Salluit	2026-05-01
CA573411	Red Rock	2026-05-29
CA5B4AMA	Port6870N10900W	2026-05-01
CA5B4CRA	Port6860N1019W	2026-05-01
CA5B4CSA	Port6860N10180W	2026-05-01

***503/26 Canadian Hydrographic Service – Raster Digital Charts (BSB V3)**

Charts	Main Title	Published
Charts Permanently Withdrawn		
RM-4446	Antigonish Harbour	2026-05-01

***504/26 Transport Canada - Ship Safety Bulletin #05/2026**

A new **Ship Safety Bulletin** has recently been posted on the [Transport Canada website](#).

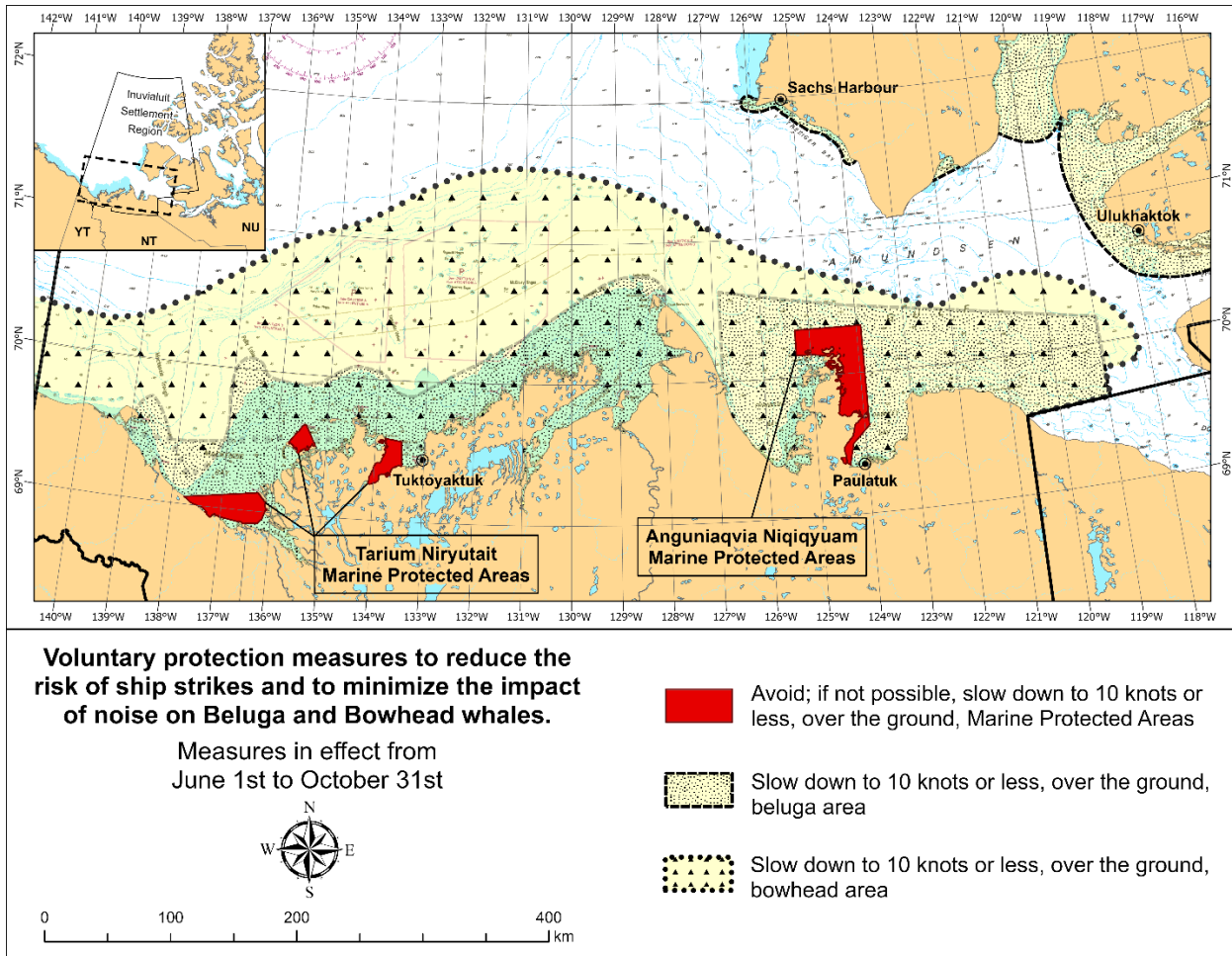
To view or download this bulletin, please click on the link below:

[SSB#05/2026](#) – The Marine Safety Management System Regulations Second Anniversary

Sign up for [e-Bulletin](#) to receive an e-mail notice each time a new Ship Safety Bulletin is published on our website.

Contact us at marinesafety-securitemaritime@tc.gc.ca or 1-855-859-3123 (Toll Free).

***505/26 Anguniaqvia Niqiqyuam Marine Protected AreaS (ANMPA), Tarium Niryutait Marine Protected Areas (TNMPA) and Beluga and Bowhead Whale Protection: Voluntary Avoidance and Slowdown Areas**



The two established Marine Protected Areas (MPAs) in Canada's Western Arctic are located within the Inuvialuit Settlement Region, as such all activities must comply with the [Inuvialuit Final Agreement](#). Protection and preservation of Arctic wildlife, the environment and biological productivity is one of the principles of the Inuvialuit Final Agreement and it is this principle that led the Inuvialuit Regional Corporation and the Inuvialuit Game Council to initiate establishment of the Western Arctic MPAs. The waters in and near the MPAs, and the offshore marine habitats of the Beaufort Sea and Amundsen Gulf, are important summer foraging habitats and travel routes used seasonally (May-October) by the Eastern Beaufort Sea beluga stock, and the Bering-Chukchi-Beaufort bowhead population.

REGULATORY PROTECTION MEASURES

All whale species are protected under the Marine Mammal Regulations, pursuant to the *Fisheries Act* requiring immediate reporting of accidental contact between a vehicle or fishing gear and a marine mammal to the Minister. Within the boundaries of the MPAs, a general prohibition is set out in the Regulations, pursuant to the *Oceans Act* prohibiting activities that disturb, damage, destroy or remove any living marine organism from the areas. Any accident, including those with a marine mammal within the Tarium Niryutait Marine Protected Areas (TNMPA) must be reported within two hours after its occurrence, to the Canadian Coast Guard. For marine accidents such as collisions that occur within the Anguniaqvia Niqiqyuam Marine Protected Areas (ANMPA) or outside the MPAs or for any situation involving a marine mammal that is dead or in trouble, report to the Fisheries and Oceans Canada, Inuvik office at (867) 777-7500.

For more information on the ANMPA and TNMPA, including local contacts and species-specific minimum distances, see Section A2 - Notices 5 and 5A.3 of the [Notices to Mariners Annual Edition](#).

VOLUNTARY PROTECTION MEASURES

Voluntary measures are in effect from June 1st to October 31st. See map above.

These measures apply to merchant vessels, cruise ships, small vessels and adventure craft within the boundaries of the MPAs and the additional identified areas to prevent collisions with whales and to mitigate the underwater noise generated by the vessels. These measures should only be taken when they will not jeopardize navigational safety.

Avoid (red area): To reduce the risk of underwater noise disturbance and collisions with whales within the MPAs, vessels should avoid transiting through the MPAs if possible. If passage through this area is necessary, vessels should slow down to a speed not exceeding 10 knots over the ground and post additional lookouts such as a marine mammal observer in order to increase the chances of seeing the whales and thus taking necessary measures to avoid them. If bypassing the whales is not possible, slow down and wait for the animals to move away to a distance greater than 400 metres (0.215 nautical miles) before resuming original speed not exceeding 10 knots over the ground. It is more difficult to see the animals in rain, fog, or in rough sea states, therefore increased caution is recommended.

Slow down to 10 knots over the ground or less (yellow areas): To reduce the risk of underwater noise disturbance and collisions with whales within these areas, it is recommended that vessels should slow down to a speed not exceeding 10 knots over the ground, navigate within the marked community supply channels and post additional lookouts.

These voluntary measures are secondary to rights under the [Inuvialuit Final Agreement](#).

MPA Coordinates

The Tarium Niryutait Marine Protected Areas consist of three areas of the Mackenzie Bay: Okeevik, Kittigaryuit and Niaqunnaq. The three areas are bounded by straight lines and lines following the low water line which connect the following geographical coordinates [Universal Transverse Mercator (UTM) North America Datum 1983 (NAD 83)].

Okeevik Sub Area					
Point	Latitude (North)	Longitude (West)	Point	Latitude (North)	Longitude (West)
1	69° 38' 19"	135° 25' 09"	13	69° 28' 35"	135° 36' 40"
2	69° 38' 03"	135° 25' 11"	14	69° 28' 39"	135° 37' 58"
3	69° 37' 46"	135° 24' 52"	15	69° 30' 34"	135° 45' 54"
4	69° 29' 49"	135° 12' 49"	16	69° 35' 18"	135° 35' 42"
5	69° 30' 45"	135° 16' 56"	17	69° 36' 00"	135° 22' 10"
6	69° 29' 26"	135° 18' 53"	18	69° 34' 40"	135° 20' 09"
7	69° 29' 23"	135° 19' 06"	19	69° 34' 00"	135° 20' 09"
8	69° 28' 07"	135° 20' 25"	20	69° 34' 00"	135° 27' 39"
9	69° 27' 36"	135° 24' 25"	21	69° 36' 00"	135° 27' 39"
10	69° 25' 51"	135° 32' 27"	22	69° 27' 00"	135° 31' 11"
11	69° 26' 32"	135° 34' 54"	23	69° 27' 00"	135° 34' 45"
12	69° 28' 21"	135° 35' 24"			

Kittigaryuit Sub Area					
Point	Latitude (North)	Longitude (West)	Point	Latitude (North)	Longitude (West)
1	69° 35' 10"	133° 48' 26"	12	69° 24' 00"	133° 59' 10"
2	69° 34' 00"	133° 28' 00"	13	69° 24' 34"	133° 53' 49"
3	69° 23' 37"	133° 26' 40"	14	69° 28' 21"	133° 48' 15"
4	69° 20' 34"	133° 40' 37"	15	69° 28' 02"	133° 50' 59"
5	69° 19' 05"	133° 42' 21"	16	69° 33' 20"	133° 47' 29"
6	69° 19' 01"	133° 42' 31"	17	69° 34' 33"	133° 47' 42"
7	69° 20' 39"	133° 43' 20"	18	69° 32' 55"	133° 51' 09"
8	69° 16' 42"	133° 54' 54"	19	69° 32' 56"	133° 51' 54"
9	69° 15' 20"	134° 06' 53"	20	69° 33' 46"	133° 55' 48"
10	69° 16' 33"	134° 05' 56"	21	69° 33' 46"	133° 55' 31"
11	69° 20' 42"	134° 02' 44"			

Niaqunnaq Sub Area					
Point	Latitude (North)	Longitude (West)	Point	Latitude (North)	Longitude (West)
1	69° 08' 00"	136° 16' 44"	10	68° 54' 22"	136° 31' 50"
2	69° 04' 25"	136° 07' 45"	11	68° 55' 00"	136° 38' 33"
3	69° 03' 43"	136° 07' 08"	12	68° 56' 15"	137° 00' 41"
4	69° 01' 19"	136° 04' 45"	13	68° 56' 29"	137° 03' 03"
5	69° 01' 14"	136° 04' 45"	14	68° 55' 48"	137° 11' 00"
6	69° 00' 57"	136° 05' 42"	15	68° 57' 50"	137° 16' 40"
7	69° 00' 12"	136° 07' 08"	16	68° 59' 20"	137° 21' 30"
8	68° 57' 00"	136° 10' 00"	17	69° 03' 09"	137° 44' 54"
9	68° 55' 00"	136° 15' 00"			

The Anguniaqvia Niqiqyuam Marine Protected Areas consist of two areas in Darnley Bay and Amundsen Gulf in the Beaufort Sea: Zone 1 and Zone 2. The areas consist of the seabed, the subsoil to a depth of five metres and the water column, including the sea ice. The two areas are bounded by straight lines and lines following the low water line which connect the following geographical coordinates [Universal Transverse Mercator (UTM) North America Datum 1983 (NAD 83)].

Zone 1		
Point	Latitude (North)	Longitude (West)
A	69° 21' 07.8"	124° 21' 32.0" approx
B	70° 12' 00.0" approx	124° 31' 55.2"
C	70° 08' 22.0"	124° 41' 45.0" approx
D	70° 09' 09.9"	124° 57' 42.0" approx
E	70° 09' 13.0" approx	125° 05' 28.6"
F	70° 09' 13.2"	125° 17' 53.0"
G	70° 20' 00.0"	125° 17' 53.0"
H	70° 20' 00.0"	123° 54' 17.5"
I	69° 37' 20.6"	123° 54' 17.5"
J	69° 30' 00.0"	124° 15' 34.7"

Zone 2		
Point	Latitude (North)	Longitude (West)
K	70° 04' 15.8"	124° 41' 51.0" approx
L	70° 04' 48.6"	124° 41' 54.0" approx
M	70° 02' 12.9"	124° 35' 23.0" approx
N	70° 02' 12.9"	124° 35' 29.0" approx

***506/26 Canadian Coast Guard Publication - Amendments to the *Notices to Mariners Annual Edition 2026* - Section A2, Notice 5: General Guidelines for Aquatic Species at Risk and Important Marine Mammal Areas**

Several amendments have been made throughout Notice 5, General Guidelines for Aquatic Species at Risk and Important Marine Mammal Areas.

The latest version of this notice is available on the [Notices to Mariners website](#).

***507/26 Canadian Coast Guard Publication - Amendments to the *Notices to Mariners Annual Edition 2026* - Section A2, Notice 5A: General Requirements for Oceans Act Marine Protected Areas and Fisheries Act Marine Refuges**

Starting at page 31:

AMEND AS FOLLOWS:

Regulatory Protection Measures for Tarium Niryutait Marine Protected Areas

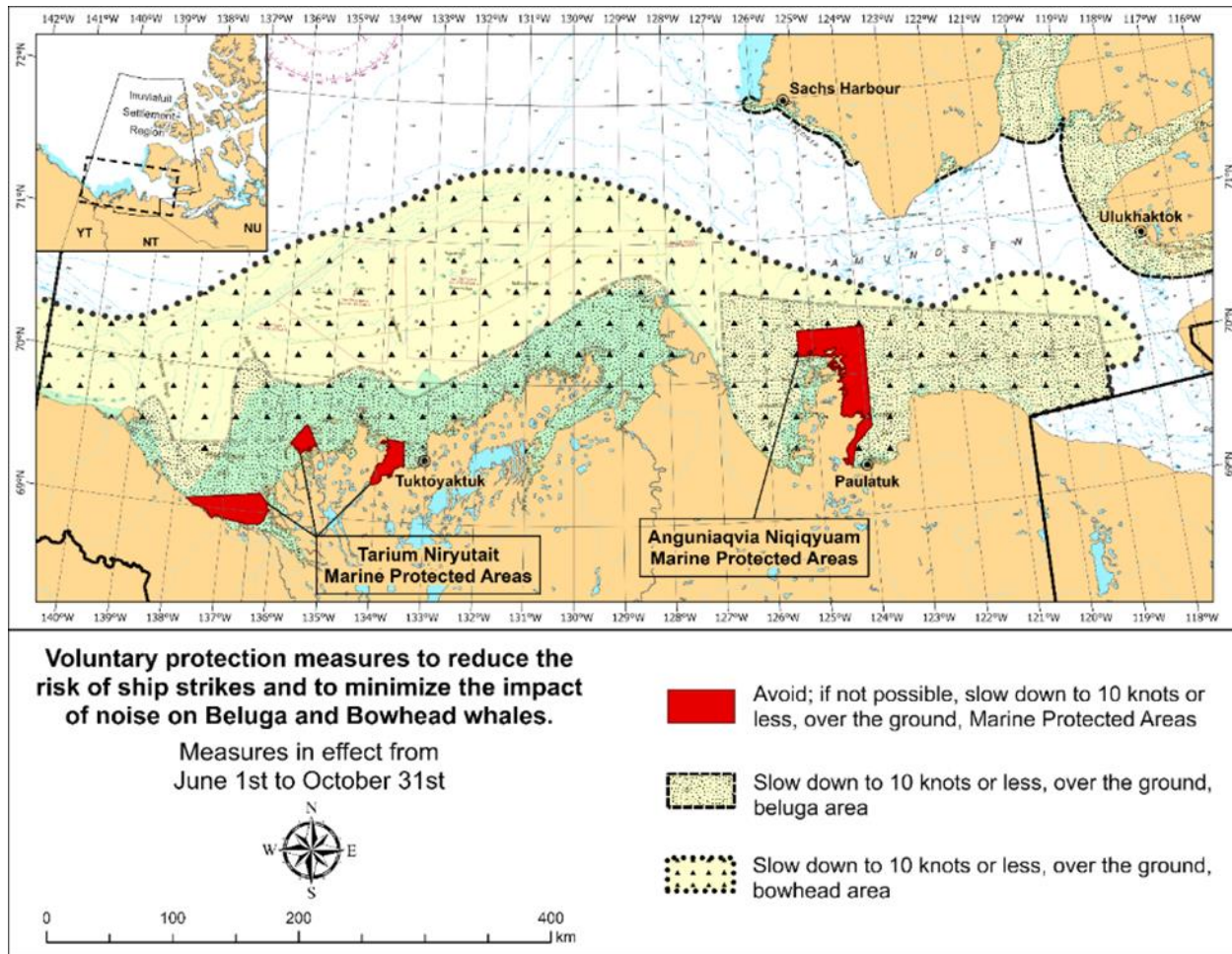
- Pursuant to the **Oceans Act**, the Regulations set out a general prohibition within the boundaries of the Marine Protected Areas, prohibiting any activities that will or are likely to disturb, damage, destroy or remove any living marine organism or any part of its habitat from the areas. Any accident within the Tarium Niryutait Marine Protected Areas must be reported within two hours after its occurrence, to the Canadian Coast Guard.

Other Requirements Applying in the Area

- In the spirit of the **Inuvialuit Final Agreement**, it is forbidden for ships to approach the traditional marine mammal harvest grounds, or to approach marine mammals unless they are directly associated with the traditional harvest of these animals. Information regarding the traditional harvest can be gained from the community **Hunters** and Trappers Committees: Aklavik HTC aklavikahtc@gmail.com, hunteraklavik@gmail.com, (867) 978-2723; Inuvik HTC, inuvikhtc@hotmail.com, (867) 777-2478; Tuktoyaktuk HTC, tuk.htc@outlook.com, (867) 340-0057 or the Fisheries Joint Management Committee (fjmc-rp@jointsec.nt.ca).
- For marine wildlife sightings and incidents such as collisions that occur outside the Marine Protected Areas or for any situation involving a marine mammal that is dead or in trouble, contact Fisheries and Oceans Canada, Inuvik office at (867) 777-7500.
- As per the Marine Mammal Regulations (2018), pursuant to the *Fisheries Act*, reporting of accidental contact with marine mammals is required.

ADD AS FOLLOWS:

These voluntary measures are secondary to rights under the [Inuvialuit Final Agreement](#).



Starting at page 35:

AMEND AS FOLLOWS:

Regulatory Requirements for [Vessels](#) Operating in the Anguniaqvia Niqiqyuam Marine Protected Areas

See **Section 5A - General Regulatory Requirements for all Oceans Act Marine Protected Areas.**

Regulatory Protection Measures for Anguniaqvia Niqiqyuam Marine Protected Areas

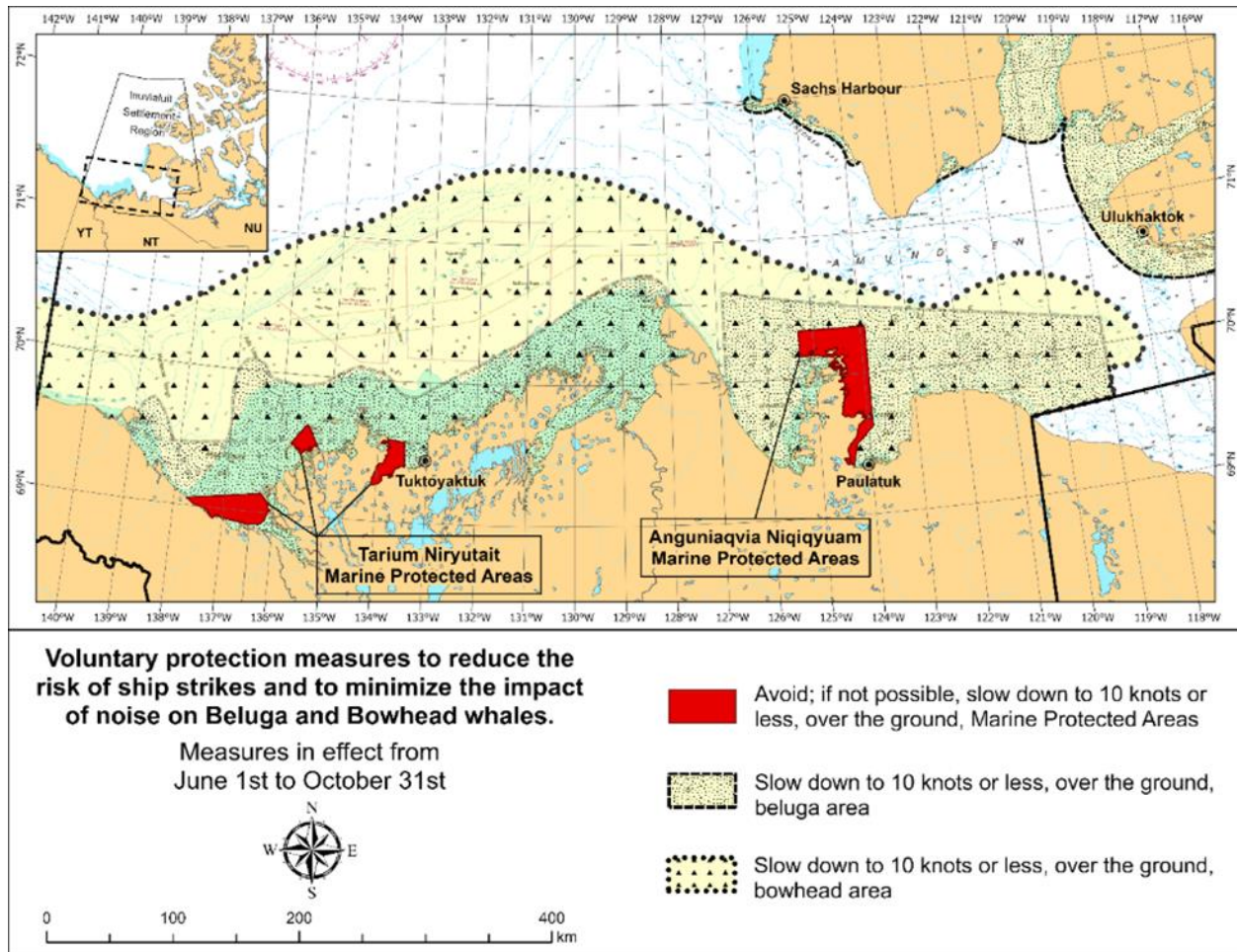
- Pursuant to the *Oceans Act*, the Regulations set out a general prohibition within the boundaries of the Marine Protected Areas prohibiting any activities that will or are likely to disturb, damage, destroy or remove any living marine organism or any part of its habitat from the areas. Any accident within the Anguniaqvia Niqiqyuam Marine Protected Areas [should](#) be reported within two hours after its occurrence, to the Canadian Coast Guard.

Other Requirement for the Marine Protected Areas

- In the spirit of the [Inuvialuit Final Agreement](#), it is forbidden for ships to approach the traditional marine mammal harvest grounds, or to approach marine mammals unless they are directly associated with the traditional harvest of these animals. Information regarding the traditional harvest can be gained from Paulatuk [Hunters](#) and Trappers Committee: paulatukhtc@gmail.com, (867) 580-3004, or the Fisheries Joint Management Committee (fjmc-rp@jointsec.nt.ca).
- For marine wildlife sightings and incidents such as collisions that occur outside the MPAs or for any situation involving a marine mammal that is dead or in trouble, contact Fisheries and Oceans Canada, Inuvik office at (867) 777-7500.
- As per the Marine Mammal Regulations (2018), pursuant to the *Fisheries Act*, reporting of accidental contact with marine mammals is required.

ADD AS FOLLOWS:

These voluntary measures are secondary to rights under the [Inuvialuit Final Agreement](#).



Section 1A: Temporary and Preliminary Notices

Reminder – Comment Period for Active Preliminary Notices

This is a reminder that the comment period is still open for the following active Preliminary notices:

Notice #	Reference Chart #	Aids Affected (LL No.)	Intent of Notice
Pacific Coast			
311(P)/26	3490	5233.1, 5233.2	Range Lights to be Discontinued

Please refer to the [Notices to Mariners - Monthly Summary of Temporary and Preliminary Notices](#) publication for details.

Arctic Coast

Temporary Notices

No notices applicable for this edition.

Preliminary Notices

Arctic Region

Comment Submission

Comments on proposed changes in preliminary (P) notices are solicited from mariners and other interested parties within three months of the initial publication date. Following this date, the notices will be cancelled. Any objections raised must state the facts on which they are based and should include supporting information on safety, commerce and public benefit.

Comments should be directed to the following:

Superintendent,
Aids to Navigation & Waterways
Canadian Coast Guard, Arctic Region
5120 49th Street
Yellowknife NT. X1A 1P8
Telephone: (867) 444-0109
Email: DFO.CCGArcticAidstoNavigation-AidesalanavigationArctiqueGCC.MPO@dfo-mpo.gc.ca

***516(P)/26 Coronation Gulf Western Portion/Partie Ouest – Daybeacon to be Discontinued**

Reference chart: 7777

The Canadian Coast Guard proposes to permanently discontinue the following aid to navigation:

Aid Name	LL No.	Position
Locker Point	4488	68° 14' 29.7"N 114° 00' 00.1"W

Initial publication date: Friday, May 29, 2026

Comment submission deadline: Thursday, August 27, 2026

(A2026-001)

***517(P)/26 Coronation Gulf Eastern Portion/Partie Est – Daybeacons to be Discontinued**

Reference chart: 7778

The Canadian Coast Guard proposes to permanently discontinue the following aids to navigation:

Aid Name	LL No.	Position
Sisters Island	4491	68° 24' 12.9"N 111° 35' 18.2"W
Ivuniryuaq South	4492	68° 13' 09.5"N 110° 57' 18.7"W
Ivuniryuaq	4493	68° 22' 20.8"N 110° 52' 19.8"W

Initial publication date: Friday, May 29, 2026

[Comment submission deadline](#): Thursday, August 27, 2026

(A2026-002, 003, 004)

Pacific Coast

Temporary Notices

***518/26 Halibut Bank to/à Ballenas Channel – ODAS Buoy Retrieved**

Reference: Notice 1112(T)/25 is cancelled (Chart 3456).

The ODAS buoy north of Ballenas Islands has been retrieved.

Preliminary Notices

No notices applicable for this edition.

Section 2: Chart Corrections

3061 - Harrison Bay to/à Harrison Hot Springs - Sheet/Feuille 1 - New Edition - 29-OCT-1999 - NAD 1983		
29-MAY-2026		LNM/D. 24-NOV-2017
Delete	Spooks Pt	49°18'20.6"N 121°48'43.1"W <i>DFO(6205429-03)</i>
3061 - Harrison Hot Springs to/à Long Island - Sheet/Feuille 1 - New Edition - 29-OCT-1999 - NAD 1983		
29-MAY-2026		LNM/D. 24-NOV-2017
Delete	Spooks Pt	49°18'20.6"N 121°48'43.1"W <i>DFO(6205429-03)</i>
3061 - Long Island to/à Little Harrison Lake - Sheet/Feuille 2 - New Edition - 29-OCT-1999 - NAD 1983		
29-MAY-2026		LNM/D. 24-NOV-2017
Delete	Coon Cr	49°40'50.6"N 122°05'38.9"W <i>DFO(6205429-02)</i>
3441 - Haro Strait, Boundary Pass and/et Satellite Channel - New Edition - 01-JUL-2005 - NAD 1983		
01-MAY-2026		LNM/D. 17-APR-2026
Delete	radar reflector against light (See Chart 1, S4)	48°46'15.5"N 123°22'02.0"W <i>(P2026009) LL(257) DFO(6205402-01)</i>
Amend	F Y to read FI Y against light (See Chart 1, P16)	48°41'25.0"N 123°24'30.2"W <i>DFO(6205411-01)</i>
29-MAY-2026		LNM/D. 01-MAY-2026
Delete	Savage Point	48°47'49.7"N 123°03'43.9"W <i>DFO(6205429-01)</i>
3442 - North Pender Island to/à Thetis Island - New Edition - 01-JUL-2005 - NAD 1983		
01-MAY-2026		LNM/D. 27-MAR-2026
Delete	radar reflector against light (See Chart 1, S4)	48°46'15.5"N 123°22'02.0"W <i>(P2026009) LL(257) DFO(6205402-01)</i>
Delete	depth of 4.6 metres (See Chart 1, I10)	48°51'00.6"N 123°29'29.9"W <i>DFO(6205425-02)</i>
Add	depth of 3.7 metres (See Chart 1, I10)	48°51'01.3"N 123°29'28.3"W <i>DFO(6205425-03)</i>
Delete	depth of 4.6 metres (See Chart 1, I10)	48°51'16.2"N 123°29'22.5"W <i>DFO(6205425-04)</i>
Add	depth of 1.4 metres (See Chart 1, I10)	48°51'16.3"N 123°29'22.2"W <i>DFO(6205425-05)</i>

Add	wreck WK with known depth of 3.7 metres (See Chart 1, K26)	48°51'09.8"N 123°28'53.2"W <i>DFO(6205425-06)</i>
Delete	wreck WK with known depth of 3.9 metres (See Chart 1, K26)	48°50'59.7"N 123°28'49.3"W <i>DFO(6205425-07)</i>
3462 - Juan de Fuca Strait to/à Strait of Georgia - New Edition - 01-JUL-2005 - NAD 1983		
	01-MAY-2026	LNM/D. 27-MAR-2026
Delete	radar reflector against light (See Chart 1, S4)	48°46'15.5"N 123°22'02.0"W <i>(P2026009) LL(257) DFO(6205402-01)</i>
3478 - Fulford Harbour - New Edition - 12-JUL-2013 - NAD 1983		
	01-MAY-2026	LNM/D. 17-APR-2026
Add	foul ground of unknown depth, marked Rep (2026) (See Chart 1, K31)	48°45'52.6"N 123°27'07.9"W <i>DFO(6205422-01)</i>
3478 - Ganges Harbour and/et Long Harbour - New Edition - 12-JUL-2013 - NAD 1983		
	01-MAY-2026	LNM/D. 17-APR-2026
Affix	patch Download Patch - https://www.notmar.gc.ca/chsftp/patches/3478_6205425_1_202604021111.pdf	48°50'59.5"N 123°28'00.0"W <i>DFO(6205425-01)</i>
3479 - Approaches to/Approches à Sidney - New Chart - 18-MAY-2007 - NAD 1983		
	08-MAY-2026	LNM/D. 17-APR-2026
Add	light Q(3) Y (See Chart 1, P16)	48°41'19.7"N 123°24'28.7"W <i>DFO(6205426-06)</i>
3479 - Iroquois Passage and/et John Passage - New Chart - 18-MAY-2007 - NAD 1983		
	08-MAY-2026	LNM/D. 17-APR-2026
Add	dolphin (See Chart 1, F20)	48°41'18.6"N 123°24'34.1"W <i>DFO(6205426-01)</i>
Add	dolphin (See Chart 1, F20)	48°41'18.9"N 123°24'32.9"W <i>DFO(6205426-02)</i>
Add	dolphin (See Chart 1, F20)	48°41'19.1"N 123°24'31.4"W <i>DFO(6205426-03)</i>
Add	dolphin (See Chart 1, F20)	48°41'19.4"N 123°24'30.0"W <i>DFO(6205426-04)</i>
Add	light Q(3) Y (See Chart 1, P16)	48°41'19.7"N 123°24'28.7"W <i>DFO(6205426-06)</i>

Delete dolphin
(See Chart 1, F20) joining 48°41'18.6"N 123°24'33.3"W
48°41'18.8"N 123°24'33.4"W
48°41'18.8"N 123°24'33.6"W
48°41'18.7"N 123°24'34.3"W
48°41'18.6"N 123°24'34.6"W
48°41'18.6"N 123°24'34.6"W
48°41'18.5"N 123°24'34.5"W
and 48°41'18.6"N 123°24'33.3"W
DFO(6205426-07)

Delete dolphin
(See Chart 1, F20) joining 48°41'18.7"N 123°24'32.2"W
48°41'19.0"N 123°24'31.0"W
48°41'19.2"N 123°24'31.1"W
48°41'19.2"N 123°24'31.4"W
48°41'19.0"N 123°24'32.1"W
48°41'18.9"N 123°24'32.3"W
and 48°41'18.7"N 123°24'32.2"W
DFO(6205426-08)

3489 - Pattullo Bridge to/à Barnston Island - Sheet/Feuille 1 - New Chart - 21-OCT-1994 - NAD 1983
08-MAY-2026 LNM/D. 27-DEC-2024

Delete light Q R
(See Chart 1, P1) 49°10'49.2"N 122°55'10.2"W
(P2026012) LL(366.1) DFO(6205415-01)

3490 - Fraser River/Fleuve Fraser, Sand Heads to/à Douglas Island, Compartment B-C - New Edition - 02-NOV-2012 - World Geodetic System 1984
08-MAY-2026 LNM/D. 13-FEB-2026

Delete light Q R
(See Chart 1, P1) 49°10'49.5"N 122°55'10.1"W
(P2026012) LL(366.1) DFO(6205415-01)

3491 - Compartment B-C - New Edition - 19-OCT-2012 - World Geodetic System 1984
08-MAY-2026 LNM/D. 17-OCT-2025

Delete light Q R
(See Chart 1, P1) 49°10'49.5"N 122°55'10.1"W
(P2026012) LL(366.1) DFO(6205415-01)

3512 - Strait of Georgia, Central Portion/Partie Centrale - New Edition - 25-DEC-1998 - NAD 1983
15-MAY-2026 LNM/D. 27-MAR-2026

Replace starboard light FI R with port light FI G 49°21'05.9"N 124°21'16.9"W
(P2026011) LL(491) DFO(6205413-01)

Reposition wreck Wk and amend depth of 140 metres to read 129 metres from 49°23'24.6"N 123°43'48.0"W
(See Chart 1, K26) to 49°23'20.0"N 123°43'44.0"W
DFO(6205423-01)

Affix patch 49°42'48.0"N 124°25'00.0"W
Download Patch - https://www.notmar.gc.ca/chsftp/patches/3512_6205427_1_202604161306.pdf
DFO(6205427-01)

29-MAY-2026 LNM/D. 15-MAY-2026

Amend vertical clearance of 34m to read 43m 49°44'39.0"N 124°01'19.0"W
(See Chart 1, D22) DFO(6205434-01)

3513 - Strait of Georgia, Northern Portion/Partie Nord - New Edition - 29-OCT-1999 - NAD 1983

15-MAY-2026

LNMD. 13-MAR-2026

- Replace starboard light FI R with port light FI G 49°21'05.9"N 124°21'16.9"W
(P2026011) LL(491) DFO(6205413-01)
- Add submarine cable (See Chart 1, L30.1) joining 49°40'16.2"N 124°29'45.9"W
49°40'15.8"N 124°29'46.0"W
49°39'47.3"N 124°29'54.7"W
49°39'39.9"N 124°30'25.4"W
49°39'11.8"N 124°31'53.3"W
49°38'36.3"N 124°34'33.9"W
49°37'51.4"N 124°37'02.8"W
49°37'38.6"N 124°39'19.5"W
49°37'33.6"N 124°39'30.8"W
49°37'31.2"N 124°40'16.1"W
49°37'31.0"N 124°41'50.4"W
49°38'25.4"N 124°44'03.9"W
49°38'31.8"N 124°44'39.6"W
49°38'43.1"N 124°47'51.4"W
and 49°40'16.3"N 124°52'10.2"W
DFO(6205424-01)
- Add submarine cable (See Chart 1, L30.1) joining 49°49'53.4"N 124°31'40.7"W
49°49'51.4"N 124°31'50.7"W
49°50'11.0"N 124°32'54.7"W
49°50'51.9"N 124°33'04.4"W
49°51'17.7"N 124°32'59.3"W
49°51'20.6"N 124°33'06.4"W
49°51'02.1"N 124°34'21.5"W
49°50'57.6"N 124°35'19.6"W
49°51'03.8"N 124°35'54.0"W
49°52'03.1"N 124°36'54.2"W
49°52'15.4"N 124°37'13.6"W
49°53'02.1"N 124°37'44.3"W
49°53'39.3"N 124°38'54.4"W
49°54'15.2"N 124°40'32.4"W
49°54'52.0"N 124°41'21.6"W
49°56'17.4"N 124°44'01.9"W
49°56'48.4"N 124°44'16.3"W
49°58'07.6"N 124°45'40.9"W
49°58'32.2"N 124°45'43.9"W
49°58'44.1"N 124°46'11.9"W
49°58'49.4"N 124°46'12.6"W
and 49°58'57.7"N 124°45'42.4"W
DFO(6205424-02)
- Add submarine cable (See Chart 1, L30.1) joining 49°49'52.3"N 124°31'44.8"W
49°49'36.0"N 124°32'41.8"W
49°49'22.7"N 124°33'02.4"W
49°48'42.3"N 124°33'18.8"W
49°47'47.7"N 124°33'22.5"W
49°46'09.0"N 124°33'13.3"W
49°45'51.5"N 124°33'12.1"W
49°45'36.3"N 124°33'14.2"W
and 49°45'31.4"N 124°33'10.4"W
DFO(6205424-03)
- Affix patch 49°42'48.0"N 124°26'00.0"W
Download Patch - https://www.notmar.gc.ca/chsftp/patches/3513_6205427_2_202604211013.pdf
DFO(6205427-02)

Affix patch 49°54'18.0"N 124°36'42.0"W
Download Patch - https://www.notmar.gc.ca/chsftp/patches/3513_6205427_3_202604211017.pdf
DFO(6205427-03)

Affix patch 49°56'36.0"N 124°51'30.0"W
Download Patch - https://www.notmar.gc.ca/chsftp/patches/3513_6205427_5_202604161313.pdf
DFO(6205427-05)

3514 - Jervis Inlet - New Edition - 02-AUG-1996 - NAD 1983
29-MAY-2026

Amend vertical clearance of 34m to read 43m 49°44'51.1"N 124°02'00.2"W
(See Chart 1, D22)
DFO(6205434-01)

3527 - Baynes Sound - New Edition - 06-APR-2001 - NAD 1983
15-MAY-2026

Add wreck Rep (2025), least depth unknown, dangerous to surface navigation (See Chart 1, K28) 49°36'08.2"N 124°48'46.9"W
DFO(6205421-01)

Add submarine cable (See Chart 1, L30.1) joining 49°38'16.4"N 124°35'42.8"W
49°37'51.4"N 124°37'00.2"W
49°37'38.6"N 124°39'19.5"W
49°37'33.6"N 124°39'30.8"W
49°37'33.4"N 124°40'05.8"W
49°37'29.2"N 124°40'46.6"W
49°37'29.9"N 124°41'32.1"W
49°37'40.1"N 124°42'16.4"W
49°38'25.4"N 124°44'03.9"W
49°38'31.8"N 124°44'39.6"W
49°38'41.6"N 124°46'59.6"W
49°38'43.7"N 124°47'47.5"W
49°39'24.5"N 124°49'50.6"W
and 49°40'16.3"N 124°52'10.2"W
DFO(6205424-01)

29-MAY-2026 LNM/D. 15-MAY-2026
Add depth of 1.8 metres 49°28'48.3"N 124°42'52.3"W
(See Chart 1, I10)
DFO(6205433-01)

3533 - Powell River and/et Westview - New Chart - 07-JUN-2019 - World Geodetic System 1984

15-MAY-2026

LNMD. 25-APR-2025

Add submarine cable (See Chart 1, L30.1) joining 49°49'53.2"N 124°31'41.5"W
49°49'52.3"N 124°31'44.5"W
49°49'51.6"N 124°31'51.0"W
49°49'52.4"N 124°31'54.6"W
49°49'59.6"N 124°32'15.1"W
49°50'01.6"N 124°32'23.2"W
49°50'07.7"N 124°32'40.7"W
49°50'09.9"N 124°32'50.4"W
49°50'11.5"N 124°32'52.5"W
49°50'25.2"N 124°32'59.8"W
49°50'52.2"N 124°33'03.7"W
49°51'16.2"N 124°32'59.3"W
49°51'19.4"N 124°33'02.3"W
49°51'20.1"N 124°33'09.8"W
49°51'18.1"N 124°33'21.6"W
49°51'02.4"N 124°34'21.7"W
and 49°51'00.6"N 124°34'44.0"W
DFO(6205424-02)

Add submarine cable (See Chart 1, L30.1) joining 49°49'52.3"N 124°31'44.8"W
49°49'47.8"N 124°32'02.5"W
49°49'40.8"N 124°32'26.9"W
and 49°49'36.0"N 124°32'41.8"W
DFO(6205424-03)

3533 - Sturt Bay and/et Van Anda Cove - New Chart - 07-JUN-2019 - World Geodetic System 1984

15-MAY-2026

LNMD. 25-APR-2025

Add submarine cable (See Chart 1, L30.1) joining 49°46'09.0"N 124°33'13.3"W
49°45'55.8"N 124°33'12.2"W
49°45'47.1"N 124°33'12.6"W
49°45'39.8"N 124°33'13.6"W
49°45'38.6"N 124°33'13.5"W
49°45'36.3"N 124°33'14.4"W
and 49°45'34.8"N 124°33'12.6"W
DFO(6205424-03)

3538 - Desolation Sound and/et Sutil Channel - New Edition - 30-DEC-2005 - NAD 1983

15-MAY-2026

LNMD. 24-OCT-2025

Add submarine cable (See Chart 1, L30.1) joining 49°55'59.4"N 124°43'30.9"W
49°56'17.4"N 124°44'01.9"W
49°56'41.9"N 124°44'13.1"W
49°57'06.2"N 124°44'35.3"W
49°57'52.0"N 124°45'25.3"W
49°58'12.2"N 124°45'42.6"W
49°58'28.6"N 124°45'42.7"W
49°58'33.9"N 124°45'46.1"W
49°58'43.9"N 124°46'11.2"W
49°58'47.1"N 124°46'12.7"W
49°58'49.1"N 124°46'11.1"W
and 49°58'51.8"N 124°46'04.1"W
DFO(6205424-02)

Affix Patch 49°56'48.0"N 124°51'36.0"W
Download Patch - https://www.notmar.gc.ca/chsftp/patches/3538_6205427_4_202604161314.pdf
DFO(6205427-04)

3554 - Lund - New Chart - 06-JAN-2017 - World Geodetic System 1984
15-MAY-2026

LNMD. 11-JUL-2025

Add submarine cable (See Chart 1, L30.1) joining 49°58'41.0"N 124°46'04.9"W
49°58'43.9"N 124°46'11.2"W
49°58'46.7"N 124°46'12.7"W
49°58'47.6"N 124°46'12.4"W
49°58'49.1"N 124°46'11.1"W
and 49°58'52.1"N 124°46'02.8"W
DFO(6205424-02)

3670 - Broken Group - New Edition - 21-OCT-1994 - NAD 1983
29-MAY-2026

LNMD. 19-SEP-2025

Add marine farm (See Chart 1, K48.2) 49°00'04.5"N 125°21'56.4"W
DFO(6205431-01)

3671 - Barkley Sound - New Edition - 04-NOV-2005 - NAD 1983
29-MAY-2026

LNMD. 24-OCT-2025

Add marine farm (See Chart 1, K48.2) 49°00'04.5"N 125°21'56.4"W
DFO(6205431-01)

3673 - Clayoquot Sound, Tofino Inlet to/à Millar Channel - New Chart - 01-DEC-1995 - NAD 1983
22-MAY-2026

LNMD. 06-FEB-2026

Affix patch Download Patch - https://www.notmar.gc.ca/chsftp/patches/3673_6205432_1_202604271725.pdf
DFO(6205432-01)

Delete depth of 9.4 metres (See Chart 1, I10) 49°19'26.2"N 125°48'34.1"W
DFO(6205432-02)

Add depth of 2.9 metres (See Chart 1, I10) 49°17'45.1"N 125°49'26.1"W
DFO(6205432-03)

Add depth of 1.3 metres (See Chart 1, I10) 49°19'26.0"N 125°48'33.5"W
DFO(6205432-04)

Delete depth of 19.7 metres (See Chart 1, I10) 49°19'21.4"N 125°48'43.0"W
DFO(6205432-05)

Add depth of 5 metres (See Chart 1, I10) 49°19'23.2"N 125°48'45.2"W
DFO(6205432-06)

3936 - Fitz Hugh Sound to à Lama Passage - New Edition - 21-MAR-2014 - World Geodetic System 1984

15-MAY-2026

LNMD. 20-OCT-2023

Delete pontoon
(See Chart 1, F16) joining 51°51'37.8"N 127°52'05.0"W
51°51'36.9"N 127°52'08.3"W
51°51'36.6"N 127°52'08.1"W
51°51'36.8"N 127°52'07.1"W
51°51'36.3"N 127°52'06.8"W
51°51'36.5"N 127°52'06.1"W
51°51'36.9"N 127°52'06.3"W
51°51'37.1"N 127°52'05.8"W
51°51'36.5"N 127°52'05.3"W
51°51'36.6"N 127°52'04.7"W
51°51'35.8"N 127°52'04.1"W
51°51'36.0"N 127°52'03.6"W
and 51°51'37.8"N 127°52'05.0"W
DFO(6205428-01)

3936 - Namu Harbour - New Edition - 21-MAR-2014 - World Geodetic System 1984

15-MAY-2026

LNMD. 20-OCT-2023

Delete pontoon
(See Chart 1, F16) joining 51°51'37.8"N 127°52'05.0"W
51°51'36.9"N 127°52'08.3"W
51°51'36.6"N 127°52'08.1"W
51°51'36.8"N 127°52'07.1"W
51°51'36.3"N 127°52'06.8"W
51°51'36.5"N 127°52'06.1"W
51°51'36.9"N 127°52'06.3"W
51°51'37.1"N 127°52'05.8"W
51°51'36.5"N 127°52'05.3"W
51°51'36.6"N 127°52'04.7"W
51°51'35.8"N 127°52'04.1"W
51°51'36.0"N 127°52'03.6"W
and 51°51'37.8"N 127°52'05.0"W
DFO(6205428-01)

Delete Esso 51°51'22.2"N 127°52'27.3"W
DFO(6205428-02)

Replace pontoon with pontoon in ruins with legend Ru
(See Chart 1, F33) joining 51°51'24.7"N 127°52'33.4"W
51°51'24.7"N 127°52'34.9"W
51°51'25.1"N 127°52'34.9"W
51°51'25.1"N 127°52'33.4"W
51°51'24.7"N 127°52'33.4"W
and 51°51'23.8"N 127°52'32.2"W
DFO(6205428-03)

Section 3: Radio Aids to Marine Navigation Corrections

***519/26 Radio Aids to Marine Navigation 2026 (Atlantic, St. Lawrence, Great Lakes, Lake Winnipeg, Arctic and Pacific)**

Page 3-1

AMEND AS FOLLOWS:

Part 3 Vessel Traffic Services

The purpose of this Part is to describe to mariners the reporting procedures to be followed by vessels ~~when within or~~ **that are** about to enter, **leave or proceed within** a Vessel Traffic Services (VTS) Zone in Canada. If a vessel enters a VTS Zone from outside Canadian waters, the master must ensure that a Sailing Plan is submitted at least 24 hours before entering Canadian waters. Additionally, within Canadian waters, there are reporting requirements based on geographical location, as set forth in the [Vessel Traffic Services Zone Regulations \(VTSZ Regulations SOR 2025-275\)](#), its applicable Schedules, and [Navigation Safety Regulations, 2020](#) (NSR, 2020).

Page 3-3

ADD AS FOLLOWS:

3.4 Standard Vessel Traffic Service Reporting Template

The following is the Standard VTS Reporting template for all VTS Reports, with the requirement to complete applicable designators depending on the type of VTS Report.

Designator	Function	Information Required
A	Vessel Identity	Vessel name, state flag, call sign, IMO ship identification number, Maritime Mobile Service Identity (MMSI) number
B	Time of Report	A 6-digit group (first two digits day of month, last four digits hours and minutes) in UTC (unless transiting in only one Time Zone)
C	Position (latitude and longitude)	A 4-digit group giving latitude in degrees and minutes suffixed with N (north) or S (south) and a 5-digit group giving longitude in degrees and minutes suffixed with E (east) or W (west)
D	Position (geographical)	True bearing (first 3 digits) and distance in nautical miles from a clearly identified landmark
E	Vessel's Course	A 3-digit group (true course)
F	Vessel's Speed	A 3-digit group in knots and tenths of knots
G	Last Port	Name of last port of call
H	Entry/Departure	Date/time (as expressed in (B)), and entry or departure (as expressed in (C) or (D))

Notices to Mariners – Monthly Western Edition
Section 3: Radio Aids to Marine Navigation Corrections

I	Destination and ETA	Name of port and expected date/time of arrival (as expressed in (B))
J	Pilot	State whether a pilot is on board or date/time (as expressed in (B)) when anticipated to board
K	Exit	Date/time (as expressed in (B)) and point of exit (as expressed in (C) or (D)) or arrival at the vessel's destination
L	Route	Intended track
M	Radiocommunications	State in full names of stations/frequencies guarded
N	Next Report	Date/time (as expressed in (B)) and/or position (as expressed in (C) or (D)) of next report
O	Draught	4-digit group giving metres and centimetres of maximum present static draught
P	Cargo	Brief details of cargo and details of any dangerous cargoes, as well as harmful substances and gases that could endanger persons or the environment (pollutants) (<i>see detailed reporting requirements</i>)
Q	Defect, Damage, Deficiency, Limitations	Brief details of defects, damage, deficiencies, or other limitations (<i>see detailed reporting requirements</i>)
R	Pollution, Dangerous Goods Lost Overboard	Brief details of type of pollution (oil, chemicals, etc) or dangerous goods lost overboard including the position (as expressed in (C) or (D)) (<i>see detailed reporting requirements</i>)
S	Weather	Brief details of weather and sea conditions (including ice) prevailing
T	Agent	Details of name and particulars of vessel's authorized representative or owner, or both, for provision of information (<i>see detailed reporting requirements</i>)
U	Vessel size and type	Details of length, breadth, tonnage, and type, etc., as required
V	Medic	Brief details of doctor, physician's assistant, nurse, or personnel with medical training
W	Persons on Board	State number of persons on board
X	Remarks	Any other information (<i>see detailed reporting requirements</i>)
Y	Relay	Request to relay report to another system
Z	End of Report	No further information required

Page 3-5

AMEND AS FOLLOWS:

3.5.2.1 Sailing Plan (SP) - 24 hour report (only applicable to vessels as described in Section 3.5.1)

- a) 24 hours if entering a VTS Zone from outside of Canadian waters, including Alaska, or as soon as feasible if the estimated time of arrival of the vessel is less than 24 hours after the time the vessel departed from their last port of call.
- b) All designators from the Standard VTS Reporting Template (Section 3.4 of this publication) that are listed in the Collaborative Vessel Management System form must be answered on the ~~Standard VTS Reporting template (Section 3.4 of this publication).~~
- c) All time references are to be in Coordinated Universal Time (UTC), unless transiting in only one Time Zone.
- d) The Collaborative Voyage Management System must be used to obtain and submit the 24 hour report Sailing Plan. If experiencing difficulty, contact:

Page 3-7

DELETE AS FOLLOWS:

3.5.2.2.3 SP – Departing berth in Western VTS Zone

- a) At least 15 minutes before the vessel departs from a berth within a VTS zone.
- b) The SP must include the following designators from the Standard VTS Reporting template: [A], [B], [C] or [D], [I], [L], [N], [P], [Q], [R], ~~[X]~~

Page 3-31

AMEND AS FOLLOWS:

3.6.2.1 Sailing Plan (SP) - 24 hour report

- a) 24 hours if entering a VTS Zone from outside of Canadian waters, or as soon as feasible if the estimated time of arrival of the vessel is less than 24 hours after the time the vessel departed from their last port of call.
- b) All designators from the Standard VTS Reporting Template (Section 3.4 of this publication) that are listed in the Collaborative Vessel Management System form must be answered on the ~~Standard VTS Reporting template (Section 3.4 of this publication).~~
- c) All time references are to be in Coordinated Universal Time (UTC), unless transiting in only one Time Zone.
- d) The Collaborative Voyage Management System must be used to obtain and submit the 24 hour report Sailing Plan. If experiencing difficulty, contact:

Page 3-35

AMEND AS FOLLOWS:

3.7.2.1 Sailing Plan (SP) - 24 hour report (only applicable to vessels as described in Section 3.5.1)

- a) 24 hours if entering a VTS Zone from outside of Canadian waters, or as soon as feasible if the estimated time of arrival of the vessel is less than 24 hours after the time the vessel departed from their last port of call.
- b) All designators from the Standard VTS Reporting Template (Section 3.4 of this publication) that are listed in the Collaborative Vessel Management System form must be answered ~~on the Standard VTS Reporting template (Section 3.4 of this publication).~~
- c) All time references are to be in Coordinated Universal Time (UTC), unless transiting in only one Time Zone.
- d) The Collaborative Voyage Management System must be used to obtain and submit the 24 hour report Sailing Plan. If experiencing difficulty, contact

Page 3-36

ADD AS FOLLOWS:

3.7.2.2.1 SP – Entering a local Eastern VTS Zone

- a) At least 15 minutes before the vessel enters a local Eastern VTS Zone.
- b) The SP must include the following designators from the Standard VTS Reporting template:
[A], [B], [C] or [D], [H], [I], [N], [P], [Q], [R], [T]

(Note: This report is not required when the vessel has previously obtained a clearance as part of Section 3.6.2.1 or 3.7.2.1 of this publication).

Page 3-36

AMEND AS FOLLOWS:

3.7.2.2.3 SP – Departing berth in Local Eastern VTS Zone

- a) At least 15 minutes before the vessel departs from a berth within a VTS zone.
- b) The SP must include the following designators from the Standard VTS Reporting template:
[A], [B], [C], ~~or~~ [D], ~~[E]~~, [I], [O], [P], [Q], [R]

Page 3-65

AMEND AS FOLLOWS:

3.8.2.1 Sailing Plan (SP) - 24 hour report

- a) 24 hours when entering the Northern VTS Zone from outside of Canadian waters, or as soon as feasible if the estimated time of arrival of the vessel is less than 24 hours after the time the vessel departed from their last port of call.
- b) All designators from the Standard VTS Reporting Template (Section 3.4 of this publication) that are listed in the Collaborative Vessel Management System form must be answered ~~on the Standard VTS Reporting template (Section 3.4 of this publication).~~
- c) All time references are to be in Coordinated Universal Time (UTC), unless transiting in only one Time Zone.
- d) The Collaborative Voyage Management System must be used to obtain and submit the 24 hour report Sailing Plan. If experiencing difficulty, contact:

Page 3-74

ADD AS FOLLOWS:

3.9.3.4.1 SP – Entering Sarnia VTS Zone and Areas

- a) At least 15 minutes before the vessel enters the Sarnia VTS Zone and Areas.
- b) The SP must include the following designators from the Standard VTS Reporting template:
[A], [B], [C] or [D], [H], [I], [N], [P], [Q], [R], [T]

Page 3-74

ADD AS FOLLOWS:

3.9.3.4.3 SP – Departing Berth in Sarnia VTS Zone and Areas

- a) At least 15 minutes before the vessel departs from a berth within a VTS zone.
- b) The SP must include the following designators from the Standard VTS Reporting template:
[A], [B], [C] or [D], [H], [I], [N], [P], [Q], [R], [T]

Section 4: Canadian Sailing Directions Corrections

The following **Canadian Sailing Directions** volumes have recently been updated on the [Canadian Hydrographic Service website](#).

No.	Title
Atlantic Coast	
ATL 101	Newfoundland, Northeast and East Coasts
ATL 105	Cape Canso to Cape Sable (including Sable Island)
ATL 111	St. Lawrence River, Île Verte to Québec and Fjord du Saguenay
Central Canada	
CEN 302	Lake Ontario
Pacific Coast	
PAC 201	Juan de Fuca Strait and Strait of Georgia
PAC 202	Discovery Passage to Queen Charlotte Strait and West Coast of Vancouver Island
PAC 203	Cape Caution to Stewart and Haida Gwaii
Northern Canada	
ARC 401	Hudson Strait, Hudson Bay and Adjoining Waters
ARC 403	Western Arctic
ARC 404	Great Slave Lake and Mackenzie River

Each volume includes a section entitled “Record of Changes” which lists all updates that are incorporated during the current calendar year.

Section 5: List of Lights, Buoys and Fog Signals Corrections

The amendments are highlighted and deletions are crossed out. For general and region-specific information on the List of Lights, click on the following links: [Newfoundland and Labrador Coast](#), [Atlantic Coast](#), [Inland Waters](#), [Pacific Coast](#) and [Arctic Coast](#).

No. ----- Intl No.	Name ----- RACON	Location ----- Latitude N. Longitude W.	Light Characteristics	Focal Height Above Water (m)	Nominal Range (NM)	Description ----- Height of Structure Above Ground Level (m)	Remarks ----- Audible Signals ----- AIS
--------------------------	------------------------	--	--------------------------	--	--------------------------	--	---

PACIFIC COAST

NORTHERN STRAIT OF GEORGIA (LL 447.5 – 510)

491 G5509	French Creek	SE. side of entrance on steel pilings. 49 21 05.9 124 21 16.9	FI G 4s	1.4	Mast, green, white and black square daymark.	Year round. Flash 0.1 s; eclipse 3.9 s.
491.1	French Creek Harbour Entrance	N. side of entrance. 49 21 07.0 124 21 17.8	FI R 4s	2.2	3	Pile, red and white triangular daymark.	Year round. Operates 24 h. Flash 0.1 s; eclipse 3.9 s.

DISCOVERY PASSAGE (LL 511 – 517.5)

511.1	Cape Mudge North Sector Light	50 00 01.1 125 11 50.0	F R W G	7.4	9	White square tower with red bands at top and bottom.	Year round. Operates 24 h. R 144°-149°; W 149°-151°; G 152°-154°.
-------	----------------------------------	---------------------------	------------------	-------	-----	---	--	---

NORTHERN INSIDE CHANNELS (LL 587 – 718.5)

641.3	Parry Patch (V-AIS)	Tolmie Channel, middle of channel on patch. 52 40 55.6 128 32 44.2	Year round. Operates 24 h. Virtual AIS AtoN MMSI: 993166018 Isolated danger
-------	---------------------	--	-------	-------	-------	-------	-------	---

HAIDA GWAI (LL 768.6 – 812)

791	Rose Point light and bell buoy C26	N. of point. 54 13 25.3 131 38 42.3	FI R 4s	Red, pillar, marked "C26".	Year round. Audible signal: Bell
-----	---------------------------------------	---	---------	-------	-------	-------	----------------------------	---