



Fisheries and Oceans  
Canada

Pêches et Océans  
Canada

Canadian  
Coast Guard

Garde côtière  
canadienne

# Notices to Mariners

**Edition No. 08/2024**  
**August 30, 2024**



Safety First, Service Always

## Monthly Eastern Edition

Canada 

Notices to Mariners – Monthly Eastern Edition  
Edition No. 08/2024

Aussi disponible en français :  
Avis aux navigateurs – Édition mensuelle de l'Est  
Édition n° 08/2024

**Published under the Authority of:**

Canadian Coast Guard Programs  
Aids to Navigation and Waterways  
Fisheries and Oceans Canada  
Montreal, QC H2Y 2E7

For more information, contact [DFO.Notmar-Notmar.MPO@dfo-mpo.gc.ca](mailto:DFO.Notmar-Notmar.MPO@dfo-mpo.gc.ca).

© His Majesty the King in Right of Canada,  
as represented by the Minister of Fisheries, Oceans  
and the Canadian Coast Guard, 2024.

Cat. No. Fs152-8E-PDF (Electronic PDF, English)  
ISSN 2817-0075

Cat. No. Fs152-8F-PDF (Electronic PDF, French)  
ISSN 2817-0083

A web version is available here:

[Notices to Mariners – Monthly Editions](#) (English)

[Avis aux navigateurs – Publications mensuelles](#) (French)

## Explanatory Notes – Notices to Mariners (NOTMAR)

**Geographical positions** refer directly to the graduations of the largest scale Canadian Hydrographic Service chart (unless otherwise indicated).

**Bearings** refer to the true compass and are measured clockwise from 000° (North) clockwise to 359°; those relating to lights are from seaward.

**Visibility** of lights is that in clear weather.

**Depths** - The units used for soundings (metres, fathoms or feet) are stated in the title of each chart.

**Elevations** are normally given above Higher High Water, Large Tide (unless otherwise indicated).

**Distances** may be calculated as follows:

- 1 nautical mile = 1,852 metres (6,076.1 feet)
- 1 statute mile = 1,609.3 metres (5,280 feet)
- 1 metre = 3.28 feet

### Temporary and Preliminary Notices to Mariners – Section 1A of *Notices to Mariners*

These notices are indicated by a (T) or a (P), respectively. Please note that nautical charts are not amended by the Canadian Hydrographic Service for temporary (T) and preliminary (P) notices. It is recommended that mariners chart these corrections in pencil. For the list of charts affected by (T) & (P) notices, please refer to the current [Notices to Mariners - Monthly Summary of Temporary and Preliminary Notices](#) publication.

### Suggestions and Corrections Form

This form is specifically for suggestions and corrections to Notices to Mariners publications. It is available [online](#) and also in [fillable PDF format](#) included with the monthly publication ZIP file.

To submit comments and suggestions on possible improvements to the various publications and services: [DFO.Notmar-Notmar.MPO@dfo-mpo.gc.ca](mailto:DFO.Notmar-Notmar.MPO@dfo-mpo.gc.ca).

To report chart discrepancies and/or corrections to the *Canadian Sailing Directions* booklets: Fill out the [Marine Information Reporting Form](#) and/or email [chsinfo@dfo-mpo.gc.ca](mailto:chsinfo@dfo-mpo.gc.ca).

To report emergencies or navigational hazards: [Contact your nearest MCTS centre](#)

- VHF channel 16 (156.8 MHz)
- MF/HF frequency 2182 kHz/4125 kHz (where available)
- \*16 on a cellphone (where available)

### NOTMAR Website – Monthly Editions, Chart Corrections and Chart Patches

The NOTMAR website allows users to access the [monthly publications](#), [chart corrections](#), and [chart patches](#).

Users can subscribe for free to the [email notification service](#) to receive notifications when charts of interest are updated, including their patches, as well as when a new Monthly Edition of *Notices to Mariners* is published.

In addition, the monthly publication and related files to download, such as chart patches, can be obtained all together through the download of a single ZIP file.

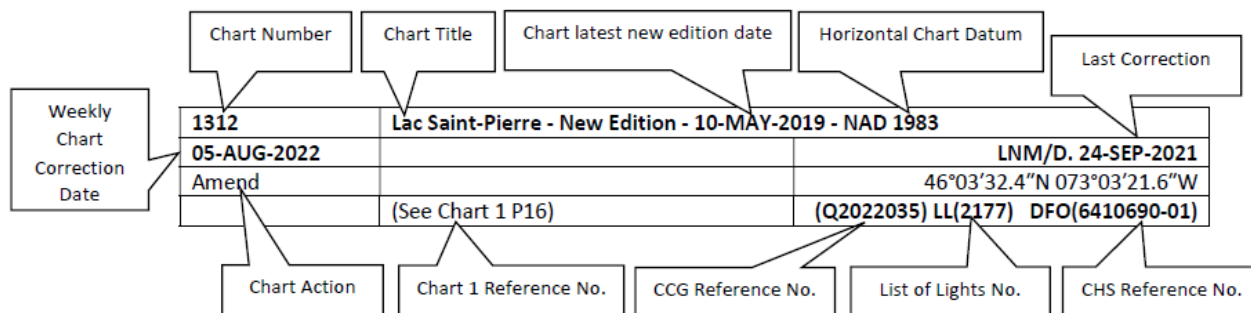
## Explanatory Notes – Canadian Hydrographic Service (CHS)

### Chart Corrections – Section 2 of *Notices to Mariners*

Corrections to nautical charts will be listed in numerical order by chart number. Each chart correction listed applies only to that particular chart. Related charts, if any, will have their own specific correction listed separately.

Users should also refer to CHS *Chart 1: Symbols, Abbreviations and Terms* for additional information pertaining to the correction of charts.

The illustration below describes the elements that will comprise a typical Section 2 chart correction:



The last correction number is identified with the **LN/D** or **Last Notice to Mariners Number / Date**.

Mariners are advised that only the most critical changes that directly affect safety to navigation are issued in “Section 2 – Chart Corrections.” This limitation is required to ensure that charts remain as clear and easy to read as possible. As a result, mariners may see minor discrepancies of a non-critical nature between information in official publications. For example, a small change in the nominal range or focal height of a light may not result in the production of a chart correction in *Notices to Mariners*, but may result in a correction in the [List of Lights, Buoys and Fog Signals](#) publication.

Note: In the case of a discrepancy between information provided on CHS charts relating to aids to navigation, and the *List of Lights, Buoys and Fog Signals* publication, the latter shall be deemed as containing the most up-to-date information.

### Canadian Nautical Charts & Publications

A source list of Canadian nautical charts and publications is published in Notice No. 14 of the *Notices to Mariners Annual Edition 2024*. The source supply and the prices effective at the time of printing are listed. For current chart edition dates, please refer to the [Canadian Hydrographic Service – List of Charts](#).

## Explanatory Notes – Marine Communications and Traffic Services (MCTS)

### Navigational Warnings / Notices to Shipping

The Canadian Coast Guard (CCG) is implementing a number of changes to the aids to navigation system in Canada.

These changes are advertised as Navigational Warnings, formerly called Notices to Shipping<sup>1</sup>, that are broadcast by the CCG, and are then followed up with Notices to Mariners, then charts are updated by hand correction, reprints or new editions.

Mariners are advised that all relevant Navigational Warnings (NAVWARN) should be kept until superseded by Notices to Mariners or through revised charts issued by the Canadian Hydrographic Service (CHS).

NAVWARN are accessible on the applicable regional page on the [CCG Navigational Warnings](#).

CHS is reviewing the impact of these changes with CCG and together are preparing an action plan on the issuing of chart revisions.

For further information, contact your regional NAVWARN Issuing Desk.

<p><b>Atlantic Region (North)</b> <b>*Port aux Basques MCTS Centre</b></p> <p>“N” Series NAVWARN</p> <p>Canadian Coast Guard 49 Stadium Rd. P.O. Box 99 Port aux Basques, NL A0M 1C0</p> <p>Telephone: 709-695-2168 or 1-800-563-9089 Facsimile: 709-695-7784</p> <p>Email: <a href="mailto:NAVWARN.MCTSPortAuxBasques@innav.gc.ca">NAVWARN.MCTSPortAuxBasques@innav.gc.ca</a></p>	<p><b>Central Region</b> <b>*Prescott MCTS Centre</b></p> <p>“Q” and “C” Series NAVWARN</p> <p>Canadian Coast Guard 401 King Street West P.O. Box 1000 Prescott, ON K0E 1T0</p> <p>Telephone: 613-925-0666 Facsimile: 613-925-4519</p> <p>Email: <a href="mailto:NAVWARN.MCTSPrescott@innav.gc.ca">NAVWARN.MCTSPrescott@innav.gc.ca</a></p>
<p><b>Atlantic Region (South)</b> <b>*Sydney MCTS Centre</b></p> <p>“M” Series NAVWARN</p> <p>Canadian Coast Guard 1190 Westmount Road Sydney, NS B1R 2J6</p> <p>Telephone: 902-564-7751 or 1-800-686-8676 Facsimile: 902-564-7662</p> <p>Email: <a href="mailto:NAVWARN.MCTSSydney@innav.gc.ca">NAVWARN.MCTSSydney@innav.gc.ca</a></p>	<p><b>Arctic Region</b> <b>*Iqaluit MCTS Centre</b></p> <p><i>Operational from approximately mid-May until late December.</i></p> <p>“A” Series NAVWARN</p> <p>Canadian Coast Guard P.O. Box 189 Iqaluit, NU X0A 0H0</p> <p>Telephone: 867-979-5269 Facsimile: 867-979-4264</p> <p>Email: <a href="mailto:NAVWARN.MCTSIqaluit@innav.gc.ca">NAVWARN.MCTSIqaluit@innav.gc.ca</a></p>

\*Service available in English and in French.

<sup>1</sup> The expression “Notice to Shipping” was changed to “Navigational Warning” in January 2019.

## Table of Contents

<b>Section 1: General and Safety Information</b>	<b>1</b>
*505/23 Canadian Hydrographic Service – Magnetic Declination Calculations.....	1
*1207/23 Canadian Hydrographic Service – Inappropriate Geographical Names Review Process.....	1
*401/24 Protecting the North Atlantic Right Whale: Speed Restriction Measures in the Gulf of St. Lawrence .....	1
*406/24 Saguenay–St. Lawrence Marine Park - Beluga Whale Protection: Slowdown Area at the Mouth of the Saguenay Fjord and Area Closure at Baie Sainte-Marguerite .....	9
*407/24 Saguenay – St. Lawrence Marine Park and Surrounding Waters – Whale Protection .....	12
*801/24 Canadian Hydrographic Service – Electronic Navigational Charts.....	13
*802/24 Transport Canada – Ship Safety Bulletin #19/2024.....	16
*804/24 Cap aux Oies à/to Sault-au-Cochon – Daybeacon Permanently Discontinued .....	16
*805/24 Sault-au-Cochon à/to Québec – Daybeacons Permanently Discontinued .....	16
*806/24 Evandale to / à Ross Island – Unlit Buoy Permanently Established.....	16
*807/24 Demarcation Bay to/à Philips Bay – Aids to Navigation Permanently Discontinued.....	17
<b>Section 1A: Temporary and Preliminary Notices</b>	<b>18</b>
Reminder – Comment Period for Active Preliminary Notices .....	18
*808(T)/24 Cape St Mary's to / à Argentia – Marine Works – Dredging Operations .....	18
*809(T)/24 Flemish Pass / Passe Flamande – Offshore Works .....	19
*810(T)/24 Port de Montréal – Obstruction – Lost Anchor.....	19
*811(T)/24 Sorel-Tracy à/to Varennes – Obstruction – Submerged Object .....	19
*812/24 Port de Québec – Waterway Information .....	20
*813/24 Port de Québec – Bridge Lights Relit.....	20
*814(T)/24 Hamilton Harbour – Waterway Information – Shallow Depth Reported .....	20
*815(T)/24 Port of Thunder Bay – Obstruction – Lost Anchor.....	20
*816(P)/24 Chats Falls à/to Chenaux – Aid to Navigation to be Discontinued.....	21
<b>Section 2: Chart Corrections</b>	<b>22</b>
<b>Section 3: Radio Aids to Marine Navigation Corrections</b>	<b>39</b>
*818/24 Radio Aids to Marine Navigation 2024 (Atlantic, St. Lawrence, Great Lakes, Lake Winnipeg, Arctic and Pacific).....	39
<b>Section 4: Canadian Sailing Directions Corrections</b>	<b>40</b>
<b>Section 5: List of Lights, Buoys and Fog Signals Corrections</b>	<b>41</b>

## Numerical Index of Canadian Charts Affected

This numerical index lists all nautical charts mentioned in this monthly edition of Notices to Mariners. Only charts appearing in Section 2 of this publication require a chart correction. The appearance of charts in all other sections, particularly those related to the correction of other nautical publications, is included here for reference.

Chart No.	Pages	Chart No.	Pages	Chart No.	Pages
1202	<a href="#">43</a>	4522	<a href="#">28</a>	7568	<a href="#">37</a>
1233	<a href="#">16</a>	4523	<a href="#">28</a>	7621	<a href="#">37</a>
1310	<a href="#">19</a>	4530	<a href="#">18, 28, 29</a>	7661	<a href="#">17</a>
1311	<a href="#">19</a>	4583	<a href="#">29</a>	7664	<a href="#">38</a>
1312	<a href="#">19</a>	4585	<a href="#">29</a>	7665	<a href="#">38</a>
1316	<a href="#">20</a>	4642	<a href="#">29</a>	7686	<a href="#">38</a>
1317	<a href="#">16</a>	4661	<a href="#">30</a>	8012	<a href="#">19</a>
1320	<a href="#">42</a>	4663	<a href="#">30</a>	8049	<a href="#">38</a>
1551	<a href="#">21</a>	4668	<a href="#">30</a>		
2067	<a href="#">20</a>	4679	<a href="#">30</a>		
2241	<a href="#">18</a>	4680	<a href="#">30</a>		
2258	<a href="#">22</a>	4820	<a href="#">30, 31</a>		
2314	<a href="#">20</a>	4821	<a href="#">31</a>		
4013	<a href="#">22</a>	4822	<a href="#">31, 32</a>		
4020	<a href="#">22</a>	4825	<a href="#">32</a>		
4021	<a href="#">22</a>	4831	<a href="#">33</a>		
4023	<a href="#">22</a>	4832	<a href="#">33</a>		
4142	<a href="#">16</a>	4841	<a href="#">18, 19</a>		
4145	<a href="#">22</a>	4846	<a href="#">33</a>		
4233	<a href="#">23</a>	4853	<a href="#">33, 41</a>		
4234	<a href="#">23</a>	4855	<a href="#">33</a>		
4266	<a href="#">23, 41</a>	4857	<a href="#">33</a>		
4279	<a href="#">23</a>	4858	<a href="#">33</a>		
4365	<a href="#">23, 24</a>	4862	<a href="#">34</a>		
4381	<a href="#">24</a>	4881	<a href="#">34</a>		
4404	<a href="#">24</a>	4906	<a href="#">42</a>		
4405	<a href="#">24</a>	4911	<a href="#">34, 35</a>		
4426	<a href="#">24, 25, 26</a>	4913	<a href="#">35, 36, 42</a>		
4448	<a href="#">26, 27, 41</a>	4937	<a href="#">36</a>		
4466	<a href="#">27</a>	4938	<a href="#">36, 41</a>		
4506	<a href="#">27</a>	4940	<a href="#">36, 37</a>		
4515	<a href="#">27</a>	5033	<a href="#">37</a>		
4518	<a href="#">27</a>	6035	<a href="#">43</a>		
4521	<a href="#">27, 28</a>	6243	<a href="#">37</a>		

## Section 1: General and Safety Information

---

### **\*505/23 Canadian Hydrographic Service – Magnetic Declination Calculations**

(Recurrent publication of notice \*505/23, originally published in the *Notices to Mariners – Monthly Eastern Edition 05/2023* publication.)

Mariners are advised that CHS has adopted the harmonized World Magnetic Model (WMM), as found on the NCEI/NOAA website. Old compass rose declination information on CHS navigational products can be updated using this website: <https://www.ngdc.noaa.gov/geomag/calculators/magcalc.shtml#declination>. While the differences in the model declinations are small each year, they can become more significant over a large period of time.

### **\*1207/23 Canadian Hydrographic Service – Inappropriate Geographical Names Review Process**

(Recurrent publication of notice \*1207/23, originally published in the *Notices to Mariners – Monthly Eastern Edition 12/2023* publication.)

The records of the Canadian Hydrographic Service could contain geographical names that may be considered inappropriate, offensive and derogatory. Geographical naming authorities are in the process of addressing many offensive place names, the review process is underway. For more information, about inappropriate geographical names, please see the [following announcement](#).

### **\*401/24 Protecting the North Atlantic Right Whale: Speed Restriction Measures in the Gulf of St. Lawrence**

(Recurrent publication of notice \*401/24, originally published in the *Notices to Mariners – Monthly Eastern Edition 04/2024* publication.)

#### **Purpose**

This bulletin describes the speed restriction zones that vessels must follow in the Gulf of St. Lawrence.

The Government of Canada has established these zones to reduce the risk of vessel colliding with North Atlantic right whales (NARW).

#### **Background**

Due to changing migration patterns of North Atlantic right whales and their increased presence in the Gulf of St. Lawrence, the Government of Canada has set seasonal speed restrictions in specific zones. These speed restrictions zones are defined as “static zones”, “dynamic shipping zones”, “seasonal management areas”, a “voluntary seasonal slowdown zone” and a “restricted area”. [See the map below for details](#).

Note: Vessels **must follow** Navigational Warnings outlining the speed restrictions. The *Interim Order for the Protection of North Atlantic Right Whales (Eubalaena Glacialis) in the Gulf of St. Lawrence, 2024* enables the issuance of Navigational Warnings (NAVWARNs) imposing speed restrictions and navigation restrictions.

Speed restriction zones are described in monthly Notices to Mariners (NOTMARs), which are published by the Canadian Coast Guard. The status of these zones is broadcasted through NAVWARNs, which are published by the Coast Guard’s Marine Communications and Traffic Services Centres.



### **Changes to speed restriction zones and measures**

Based on consultations with industry and on scientific data, changes to the speed restriction zones will be effective from April 17th, 2024, while the restricted area will be implemented based on whale presence.

A voluntary seasonal slowdown of 10.0 knots over the ground spanning from Cabot Strait (a line running from Cape North NS to Cape Ray NL) to the eastern edge of dynamic shipping zone E will be implemented at the beginning and end of the North Atlantic right whale season (Spring and fall).

Please check the latest NAVWARN for all speed restrictions currently in effect.

### **Speed Restriction Measures for 2024**

These restrictions will be in effect from **April 17 to November 15, 2024**.

### **Exceptions**

The following exception will apply to **all** measures:

- a) a vessel in distress or providing assistance to a person or a vessel in distress;
- b) a government vessel being used
  - i. for law enforcement activities;
  - ii. for search and rescue operations; or
  - iii. to ensure the competency of the crew or the operational readiness of the vessel or crew with respect to such activities or operations.

### **Static zones**

In the static zones, **all** vessels above **13 m** in length overall (LOA) must proceed at a speed of not more than 10.0 knots over the ground.

### **Exclusions**

Air cushion vessels operated by or on behalf of the Government of Canada that are engaged in ice-clearing activities from April to June in and around Chaleur Bay are exempted when in operation.

### **36.57 m (20-fathom) shallow water protocol exclusion**

Vessels engaged in any commercial fishing activity may proceed at a safe operational speed in waters not more than 36.57 m (20 fathom) deep within the static zones.

If a notice to fish harvesters and a NAVWARN state that at least one North Atlantic right whale has been detected in waters within a static zone or its associated buffer zone that are not more than 36.57m deep, the speed limit of 10.0 knot over the ground will apply in the concerned zone(s) to all vessels above 13m in length overall (LOA). The speed restriction will be in effect for 15 days after the day on which the whale was detected. The buffer zones associated with the static zones are located 5 miles north and south of their adjacent border in waters less than 36.57m deep.

**Coordinates for the northern static zone:**

- 50° 20' N 065° 00' W
- 49° 13' N 065° 00' W
- 48° 40' N 064° 13' W
- 48° 40' N 062° 40' W
- 48° 03' N 061° 07.5' W
- 47° 58.1' N 061° 03.5' W
- 48° 00' N 061° 00' W
- 49° 04' N 061° 00' W
- 49° 04' N 062° 00' W
- 49° 43' N 063° 00' W
- 50° 20' N 063° 00' W

**Coordinates for the southern static zone:**

- 48° 40' N 065° 00' W
- 48° 40' N 062° 40' W
- 48° 03' N 061° 07.5' W
- 47° 58.1' N 061° 03.5' W
- 47° 10' N 062° 30' W
- 47° 10' N 065° 00' W

**Dynamic shipping zones**

There are five dynamic shipping zones (DSZ) located in the routing systems north and south of Anticosti Island: A, B, C, D and E

**Coordinates for the dynamic shipping zones:**

**Zone A**

- 49° 41' N, 065° 00' W
- 49° 20' N, 065° 00' W
- 49° 11' N, 064° 00' W
- 49° 22' N, 064° 00' W

**Zone B**

- 49° 22' N, 064° 00' W
- 49° 11' N, 064° 00' W
- 48° 48' N, 063° 00' W
- 49° 00' N, 063° 00' W

**Zone C**

- 49° 00' N, 063° 00' W
- 48° 48' N, 063° 00' W
- 48° 24' N, 062° 00' W
- 48° 35' N, 062° 00' W

**Zone D**

- 50° 16' N, 064° 00' W
- 50° 00' N, 064° 00' W
- 49° 56' N, 063° 00' W
- 50° 16' N, 063° 00' W

**Zone E**

- 48° 35' N 062° 00' W
- 48° 24' N 062° 00' W
- 48° 03' N 061° 07.5' W
- 47° 58.1' N 061° 03.5' W
- 48° 00' N 061° 00' W
- 48° 10.5' N 061° 00' W

When a North Atlantic right whale is detected in a dynamic shipping zone or in the buffer zones, located 5 nautical miles south or 2.5 nautical miles from the eastern and western edges of the dynamic shipping zones:

- All vessels will be notified via a NAVWARN; and
- Vessels above **13 m** in length overall (LOA) must proceed at a speed of not more than 10.0 knots over the ground within that zone.

Even though dynamic shipping zones overlap with static zones, vessels can travel at a safe operational speed in dynamic shipping zones when they are not under speed restriction. Mariners must also keep in mind that North Atlantic right whales may be nearby.

### Speed restrictions in the dynamic shipping zones

The detection of North Atlantic right whales in one or more dynamic shipping zone(s), or in their buffer zones, will trigger a speed restriction in the concerned zone(s). The speed restriction in the dynamic shipping zone(s) will be in effect for 15 days from the date of detection. In the event of a new North Atlantic right whale detection occurring in the last 7 days of the 15-day slowdown period, the speed restriction will be extended for an additional 15 days from the date of the new detection. This would continue until no NARW are detected.

When a NAVWARN is issued implementing a speed restriction in one or more dynamic shipping zone(s), vessels above **13 m** in length (LOA) must not exceed a speed of 10.0 knots over the ground. Within any dynamic zone that is not subject to a speed restriction, mariners may proceed at a safe operational speed. Mariners are encouraged to take into consideration the potential for their vessel striking North Atlantic right whales when considering a “safe operational speed” during navigation.

### Seasonal management areas

Seasonal management area 1 (SMA-1) and seasonal management area 2 (SMA-2) are speed restriction areas located north and south of dynamic shipping zone E, respectively.

Within seasonal management areas, vessels above **13 m** in length (LOA):

- must restrict their speed so as not to exceed 10.0 knots over the ground from April 17<sup>th</sup> to June 25<sup>th</sup>, 2024; **and**
- are allowed to proceed at a safe operational speed from June 26<sup>th</sup> to November 15<sup>th</sup>, 2024, unless a North Atlantic right whale is detected. If a whale is detected, a speed restriction of 10.0 knots over the ground will be triggered for 15 days from the date of detection. In the event of a new North Atlantic right whale detection occurring in the last 7 days of the 15-day slowdown period, the speed restriction will be extended for an additional 15 days from the date of the new detection. This would continue until no North Atlantic right whales are detected.

#### Coordinates for the SMA-1:

- 49° 04' N 062° 00' W
- 49° 04' N 061° 00' W
- 48° 10.5' N 061° 00' W
- 48° 35' N 062° 00' W

#### Coordinates for the SMA-2:

- 48° 24' N 062° 00' W
- 48° 03' N 061° 07.5' W
- 47° 58.1' N 061° 03.5' W
- 47° 26.69' N 062° 00' W

### Restricted area

In the summer months, an important proportion of the total North Atlantic right whale population gathers for feeding and surface activity near the [Shediac Valley](#). Since this makes the North Atlantic right whale more susceptible to vessel collisions, a mandatory restricted area will be implemented in and near the [Shediac Valley](#) and will come into force once 80% of the restricted area is closed to fishing for the season as per the [Department of Fisheries and Oceans' right whale closure protocol](#) or at the latest on June 19<sup>th</sup>, 2024. The restricted area will be lifted once the North Atlantic right whale detections decrease in the restricted area or at the latest on September 25<sup>th</sup>, 2024.

The size and location of the area are determined based on historical detection data of North Atlantic right whales. All necessary details can be found in the *Interim Order for the Protection of North Atlantic Right Whales (Eubalaena Glacialis) in the Gulf of St. Lawrence, 2024*. Triggering and lifting of the restricted area will be communicated to mariners through NAVWARNs and notices to fish harvesters.

Vessels above **13 m** in length (LOA) will be required to:

- avoid the area unless they are part of the exceptions listed in the Interim Order for the Protection of North Atlantic Right Whales (*Eubalaena Glacialis*) in the Gulf of St. Lawrence, 2024;
- transit the area at a speed not exceeding 8.0 knots over the ground if they are part of the exceptions.

The following exceptions will apply to the restricted area. The following listed vessels can travel through the area at not more than 8.0 knots over the ground:

- A vessel being used for commercial fishing;
- A vessel being used for fishing under the authority of a licence issued under the *Aboriginal Communal Fishing Licences Regulations*;
- A vessel being used for research purposes on behalf of the Government of Canada
- A vessel being used as part of the Department of Fisheries and Oceans' Marine Mammal Response Program to assist a marine mammal or sea turtle in distress or to access or retrieve a deceased marine mammal or sea turtle;
- A vessel authorized by the Government of Canada to retrieve or identify the location of abandoned or lost fishing gear;
- A vessel involved in pollution response operations;
- A vessel avoiding immediate or unforeseen danger;
- A vessel involved in research relating to right whales as part of a project that has received funding from the Government of Canada.

The following vessels can travel through the restricted area at a speed over 8.0 knots, but below 10.0 knots over the ground as required by the static speed restriction zone:

- A vessel being used by an employee of the Government of Canada or peace officer who is performing their duties.

**Coordinates for the restricted area:**

- 48°31.8' N 063°39.6' W
- 48°24.72' N 063°17.88' W
- 47°18.84' N 064°10.8' W
- 47°27.18' N 064°30.72' W

**Inclement weather exception**

Mariners will be notified in advance via a NAVWARN should the speed restriction status change in any zone or area, due to inclement weather.

Within any zone or area that is no longer subject to a speed restriction due to adverse weather conditions, mariners may proceed at a safe operational speed. Mariners are however encouraged to take into consideration the potential for their vessel striking North Atlantic right whales when considering a “safe operational speed” during navigation.

\*Non-expected vessels are still prohibited from transiting through the restricted area.

**Voluntary seasonal slowdown in Cabot Strait**

To coincide with the North Atlantic right whales entering and exiting the Gulf of St. Lawrence in large numbers, a voluntary seasonal slowdown is being put in place in Cabot Strait from April 17<sup>th</sup> to June 25<sup>th</sup>, 2024, and from September 25<sup>th</sup> to November 15<sup>th</sup>, 2024.

- During these periods, vessels above 13 m in length (LOA) are requested to voluntarily reduce their speed as to not exceed 10.0 knots over the ground.

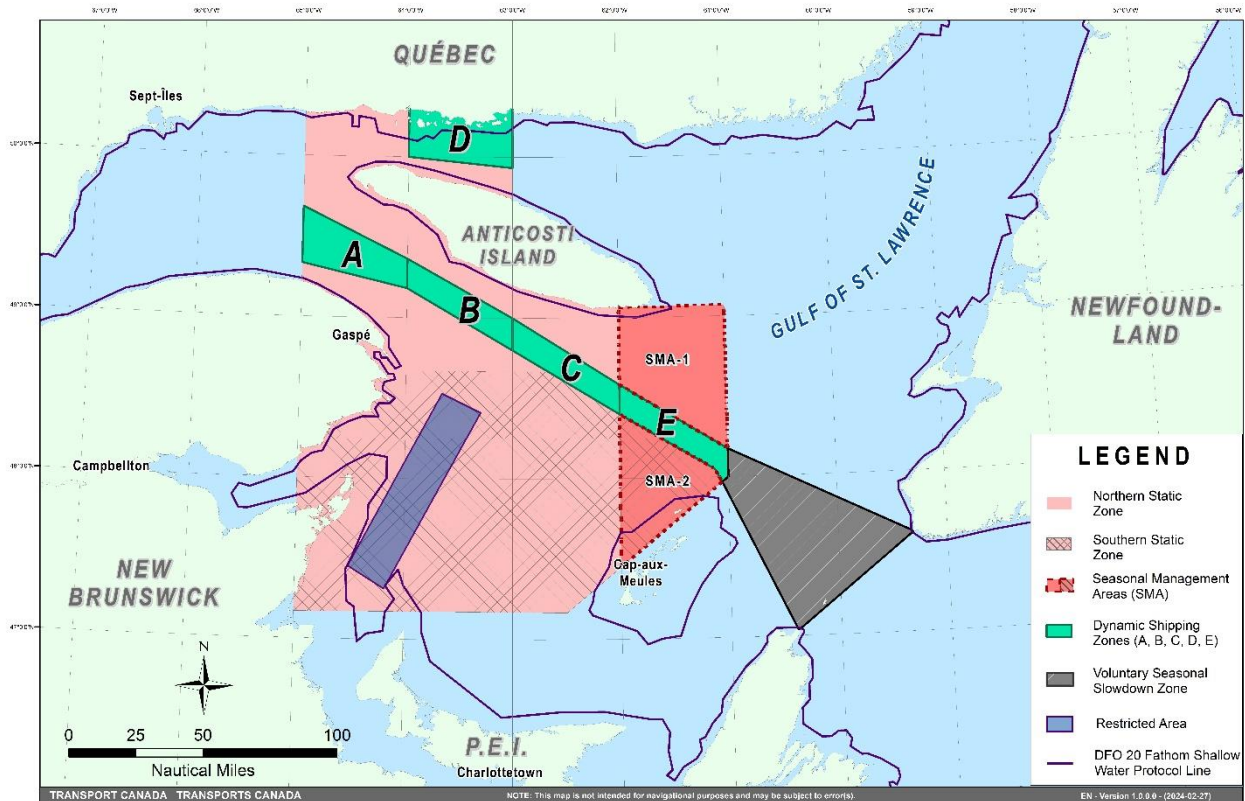
**Voluntary seasonal slowdown zone coordinates:**

- 48° 10.5' N 061° 00' W
- 47° 37.2' N 059° 18.5' W
- 47° 02' N 060° 23.7' W
- 47° 58.1' N 061° 03.5' W
- 48° 00' N 061° 00' W

**Map of the Gulf of St. Lawrence**

The following map shows

- the static zones (north and south), in pink;
- the dynamic shipping zones (A, B, C, D and E), in green;
- the seasonal management areas, in dark pink;
- the voluntary seasonal slowdown zone, in grey;
- the restricted area, in dark blue; and
- the 36.57 m (20 fathom) shallow water protocol line.



This map is for visual representation only and is not to be used for navigation or enforcement.

### **Roseway Basin – Area to be Avoided**

The Roseway Basin, located approximately 20 nautical miles south of Cape Sable Island, Nova Scotia, is a critical habitat for North Atlantic right whales, which have been observed to gather in the area on a seasonal basis in Canadian waters. This critical habitat is also located near key shipping routes. In 2007, Canada, with the support of many groups with varied interests, proposed to the International Maritime Organization (IMO) the establishment of a seasonal Area to be Avoided in the Roseway Basin to protect North Atlantic right whales, which IMO accepted and adopted.

To reduce the risk of vessels colliding with North Atlantic right whales, it is recommended that vessels of 300 gross tonnages and more, in transit during the period of June 1 through December 31, avoid the Roseway Basin area. Smaller vessels are also encouraged to avoid passage through this area. If passage is necessary within the Area to be Avoided, it is recommended that all mariners decrease their vessel speed to no more than 10 knots, when safe to do so.

#### **Roseway Basin coordinates:**

- 43° 16' N 064° 55' W
- 42° 47' N 064° 59' W
- 42° 39' N 065° 31' W
- 42° 52' N 066° 05' W

#### **NAVWARN broadcasts**

The Canadian Coast Guard issues NAVWARNs:

- by radio broadcast; and
- online at [Canada's Maritime Information Portal](#) and its [Navigational Warnings](#) site.

Mariners must ensure they have accurate and up-to-date information about the protection of the North Atlantic right whale, as in all applicable NOTMARs and NAVWARNs.

For the North Atlantic right whale speed restrictions, the NAVWARN(s) currently in effect will be provided to vessels subject to the Vessel Traffic Services Zone Regulations or the Eastern Canada Vessel Traffic Services Zone Regulations:

#### **Outbound vessels will receive NAVWARNs**

- at Calling-in-Point 10 (St-Laurent); or
- upon a departure downstream from the Quebec pilot station (including the Saguenay River, Chaleur Bay, Miramichi Bay, etc.)

#### **Inbound vessels will receive NAVWARNs**

- when a clearance to enter Canadian waters is granted

#### **Vessels in transit will receive NAVWARNs**

- at the last reporting point prior to entering the mandatory speed restriction zones; and/or
- at 10 nautical miles before they enter the mandatory speed restriction zones

For those vessels not subject to the above-mentioned regulations, vessel operators are required to monitor broadcasts by the Canadian Coast Guard's Marine Communications and Traffic Services network for the most up to date information. For marine radio frequencies and broadcast times, information may be found in the [Radio Aids to Marine Navigation](#) publication.

## Aids to navigation

The Canadian Coast Guard is currently testing virtual Automatic Identification System (AIS) aids to navigation (AIS AtoN) in specific areas. These aids notify mariners of a dynamic shipping zone and/or a seasonal management area subject to a speed restriction.

Each zone is delimited by four to six virtual AIS AtoN, which can be displayed on a ship's navigation equipment, such as

- Electronic Chart Display and Information System (ECDIS);
- Electronic Chart System (ECS);
- RADAR;
- Minimum Keyboard Display (MKD); and
- Electronic Nautical Chart (ENC).

The Canadian Coast Guard broadcasts the virtual AIS AtoN only when a speed restriction is in effect in one or more testing zones.

Mariners must select the virtual AIS AtoN symbol to view a message such as "SectA1 Spd Lim 10 kt." This message refers to a speed restriction in effect for a specific zone.

Note: This system is not the primary method of communicating this information.

## Compliance and enforcement

Vessels must comply with the Interim Orders made pursuant to the *Canada Shipping Act, 2001*, and any NAVWARNs broadcasted and published by the Canadian Coast Guard relating to the Interim Orders, aimed at regulating the navigation for the purposes of protecting the North Atlantic right whales.

If a vessel does not comply with the Interim Orders or instructions in the NAVWARNs related to the Interim Orders, the vessel could face:

- administrative monetary penalties up to a maximum of CAN \$250,000; and/or
- penal sanctions under the *Canada Shipping Act, 2001* is liable on summary conviction to a fine of not more than CAN \$1,000,000 or to imprisonment for a term of not more than 18 months, or to both.

If a vessel appears to have violated the speed restriction, Transport Canada Marine Safety inspectors will review all information provided through AIS and seek an explanation from the master.

No exemptions to the speed restriction will be granted in advance. However, if a deviation from the speed restrictions is necessary for safety reasons, the following information must be entered into the bridge logbook:

- reason(s) for deviation;
- speed at which vessel is operated;
- latitude and longitude at time of deviation;
- time and duration of deviation; and
- master of the vessel shall sign and date the bridge logbook entry.

For any deviation, Transport Canada will review and consider reasons such as:

- navigating to ensure vessel safety;
- weather conditions;
- force majeure (unforeseeable circumstances); and
- responding to emergencies.

### Report a North Atlantic right whale sighting

If you see live, free-swimming whales:

- Email: [DFO.GLFWhales-BaleinesGLF.MPO@dfo-mpo.gc.ca](mailto:DFO.GLFWhales-BaleinesGLF.MPO@dfo-mpo.gc.ca)
- When reporting sightings of North Atlantic right whales, you must include: GPS location (latitude and longitude), date and time of sighting, number of marine mammals, photograph(s)/video(s) collected and if possible, behavior of marine mammals observed (ex., feeding, travelling, diving).

If you see a North Atlantic right whale (and all other marine mammals) **entangled, injured or dead**, please document and report it immediately to the regional Response Network.

- When documenting you should collect: GPS location (latitude and longitude), date and time of sighting, number of marine mammals, photograph(s)/video(s), and description of the incident to provide to the Response Network.

### **Southern part of the Gulf of St. Lawrence (New Brunswick, Nova Scotia & Prince Edward Island):**

Marine Animal Response Society  
Telephone: 1-866-567-6277

### **Newfoundland and Labrador:**

Whale Release and Strandings Newfoundland and Labrador (Tangly Whales Inc.)  
Telephone: 1-888-895-3003 or 1-709-895-3003

### **Quebec:**

Baleines en direct (GREMM)  
Telephone: 1-877-722-5346

### **REPORT A MARINE MAMMAL OR SEA TURTLE INCIDENT OR SIGHTING:**

For more information on reporting other marine mammal or sea turtle sighting and incidents:

<https://www.dfo-mpo.gc.ca/species-especies/mammals-mammiferes/report-rapport/page01-eng.html>

Please consult Whale Insight for the latest right whale observations:

<https://gisp.dfo-mpo.gc.ca/apps/WhaleInsight/eng/?locale=en>

### **\*406/24 Saguenay–St. Lawrence Marine Park - Beluga Whale Protection: Slowdown Area at the Mouth of the Saguenay Fjord and Area Closure at Baie Sainte-Marguerite**

(Recurrent publication of notice \*406/24, originally published in the *Notices to Mariners – Monthly Eastern Edition 04/2024* publication.)

The Saguenay–St. Lawrence Marine Park and its surrounding area are at the heart of endangered beluga whale critical summer habitat. Marine mammal protection measures have been put in place in accordance with the *Marine Activities in the Saguenay–St. Lawrence Marine Park Regulations* within the limits of the Marine Park.

However, important feeding, calving and rearing areas for beluga whales require greater protection to ensure the recovery of the species. The portion of the Saguenay situated between the mouth of the Fjord and Baie Sainte-Marguerite is one of the areas most used by females and their young from May to October. The mouth of the Saguenay is known as a feeding ground and Baie Sainte-Marguerite as a calving and rearing area.

In order to prevent collisions with beluga whales, a compulsory 15-knot slowdown area is in effect from May 1<sup>st</sup> to October 31<sup>st</sup> at the mouth of the Saguenay. To ensure tranquility for female belugas and their young during the critical calving period, access to Baie Sainte-Marguerite is prohibited to all vessels from June 21<sup>st</sup> to September 21<sup>st</sup>, except for special authorizations (see description below).



For safety reasons, *the slowdown area measure at the mouth of the Saguenay Fjord does not apply* to cargo ships (see the monthly edition of *Notice to Mariners* from May to October for voluntary protection measures in the St. Lawrence Estuary). An enhanced vigilance is, however, recommended to all navigators between the mouth of the Saguenay Fjord and Baie Sainte-Marguerite for the protection of beluga whales.

For more information on the Saguenay–St. Lawrence Marine Park, see notice 5C of the *Notices to Mariners Annual Edition 2024* or visit [marinepark.gc.ca](http://marinepark.gc.ca).

## REGULATORY PROTECTION MEASURES — BELUGA WHALE

### Entire Marine Park Territory:

- When beluga whales are less than half a nautical mile (926 metres) from a motorized vessel, the vessel must maintain a steady speed of between 5 and 10 knots.
- All vessels, including human-powered vessels (kayaks and canoes), must continue to move forward and maintain their heading.
- All vessels must maintain a minimum distance of 400 metres from beluga whales at all times.

For more information concerning the regulations, consult: [marinepark.ca](http://marinepark.ca).

### Mouth of the Saguenay Fjord (Figure 1) — Slowdown Area (area crosshatched in red):

- Maximum speed at the mouth of the Saguenay between buoys S7 and S8 and the ferry docks between Baie-Sainte-Catherine and Tadoussac is 15 knots from May 1<sup>st</sup> to October 31<sup>st</sup>.

### Baie Sainte-Marguerite (Figure 2) — Area Closure (red area):

- From June 21<sup>st</sup> to September 21<sup>st</sup>, vessels must not enter the red area, which follows a line between Cap Nord-Ouest and Cap Sainte-Marguerite.
- Special authorizations are granted only for kayaks, canoes and recreational fishermen who must travel without stopping along a corridor within 10 metres of the shore or in shallow areas.

## VOLUNTARY PROTECTION MEASURES

### Baie Sainte-Marguerite sector (Figure 2) — Transit Area (area crosshatched in yellow):

- From June 21<sup>st</sup> to September 21<sup>st</sup>, navigation in this area is recommended at a speed of between 5 and 10 knots without stopping.

The purpose of this transit area is to favour respect of the *Marine Activities in the Saguenay–St. Lawrence Marine Park Regulations*, since beluga whales are often present in the Baie Sainte-Marguerite sector.

### Information

All incidents, including collisions with whales, must be reported without delay by calling 1-866-508-9888. For any other situation concerning a marine mammal that is either dead or in trouble, contact the Marine Mammal Emergency Response Network at 1-877-722-5346, or use VHF channel 16.

Figure 1

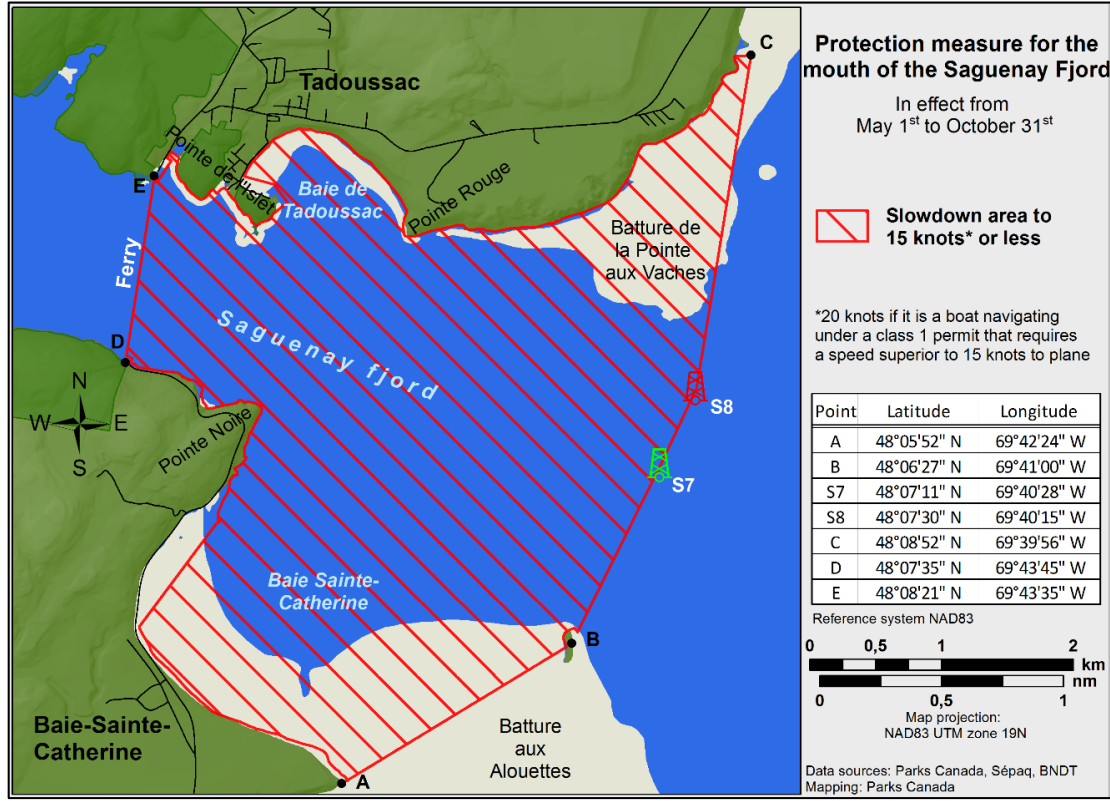
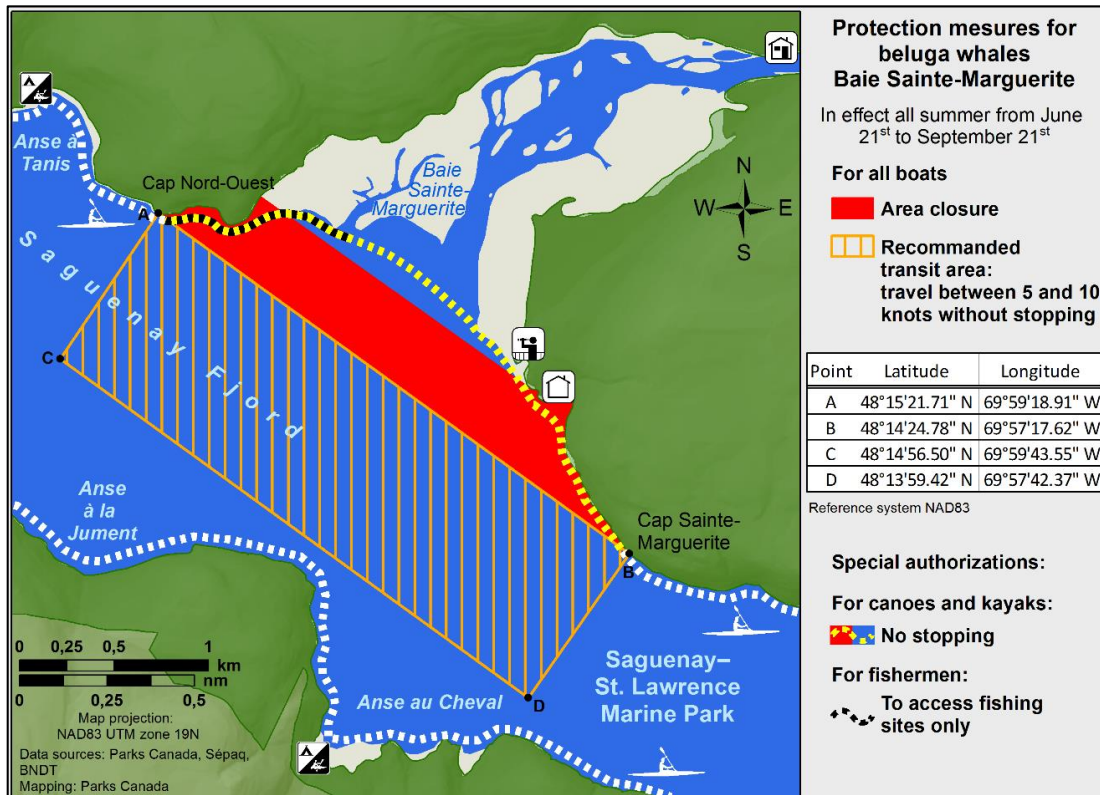


Figure 2



**\*407/24 Saguenay – St. Lawrence Marine Park and Surrounding Waters – Whale Protection**

(Recurrent publication of notice \*407/24, originally published in the *Notices to Mariners – Monthly Eastern Edition 04/2024* publication.)

The waters in and around the Saguenay–St. Lawrence Marine Park are well known for the resident endangered beluga population and the wide diversity of whales that migrate there to feed, particularly between April and November.

**REGULATORY PROTECTION MEASURES**

All whale species that are found in the St. Lawrence are protected under the *Marine Mammal Regulations*, pursuant to the *Fisheries Act*. Within the boundaries of the Marine Park, specific measures are set out in the *Marine Activities in the Saguenay–St. Lawrence Marine Park Regulations*, pursuant to the establishment of the *Saguenay–St. Lawrence Marine Park Act*. Any collision with a marine mammal within the Marine Park must immediately be reported to a park warden at 1-866-508-9888. For collisions that occur outside the Marine Park or for any situation involving a marine mammal that is dead or in trouble, contact the emergency network at 1-877-722-5346 or on VHF channel 16.

For more information on the Saguenay–St. Lawrence Marine Park, see notice 5C of the *Notices to Mariners Annual Edition 2024*.

**VOLUNTARY PROTECTION MEASURES**

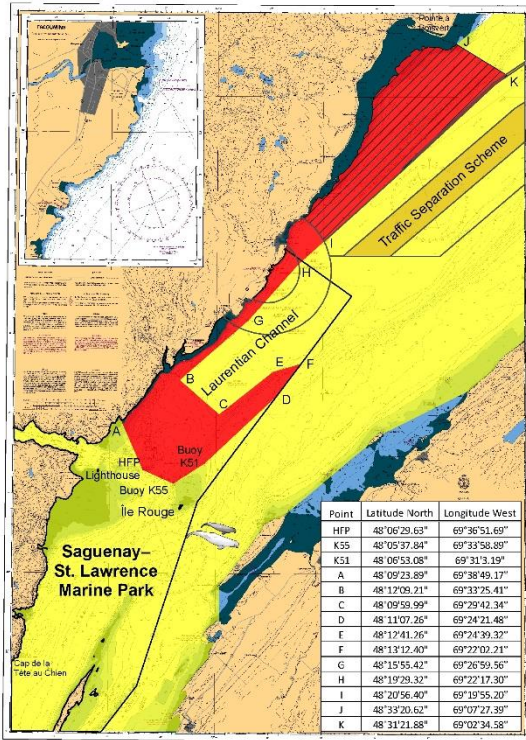
Provisional measures in effect from May 1 to October 31, 2024. See map at the end of this notice.

These measures apply to merchant vessels and cruise ships between Pointe à Boisvert and Cap de la Tête au Chien to prevent collisions with whales. These measures should only be taken when they will not jeopardize navigational safety.

**Caution area (yellow area):** To reduce the risk of collisions with whales that can be present anywhere in this area, heightened vigilance of navigators is critical. Posting a lookout is recommended in order to increase the chances of seeing the whales and thus taking necessary measures to avoid them. If bypassing the whales is not possible, slow down and wait for the animals to move away to a distance greater than 400 metres (0.215 nautical miles) before resuming original speed. It is more difficult to see the animals at night therefore increased caution is recommended.

**Slow down to 10 knots or less area (red area):** To reduce the risk of collisions with whales in this feeding area, it is recommended that vessels slow down to a maximum speed through the water of 10 knots and post a lookout. It is further recommended to remain in the Laurentian Channel to the north of Île Rouge to minimize the impact of noise in a sensitive area south of this island, which is highly frequented by herds of beluga whales composed of females and young.

**Area to be avoided (hatched red area):** To reduce noise and the risk of collisions with whales, vessels should avoid transiting through this area which is highly frequented by blue whales, an endangered species. If the area cannot be avoided, slow down to a speed through the water of 10 knots or less.

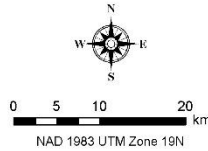


**Voluntary protection measures to reduce the risk of ship strikes with whales and to minimize the impact of noise on beluga whale**

Provisional measures in effect from May 1<sup>st</sup> to October 31<sup>st</sup> 2024

- Caution area**  
presence of whales
  - Slow down to 10 knots\* or less area**  
Important whale feeding area
  - Area to be avoided; if impossible, slow down to 10 knots\* or less**  
Important blue whale area
- Sensitive area highly used by beluga herds composed of females and young  
**It is recommended to navigate in the Laurentian Channel north of Île Rouge**

\* 10 knots refers to speed through water



**\*801/24 Canadian Hydrographic Service – Electronic Navigational Charts**

S-57 ENC Number	Chart Title	ENC Compilation Scale	Published
<b>New Charts</b>			
CA45FS2A (Edn 1.000)	CA45FS2A	1:22 500	2024-08-23
CA471199 (Edn 1.000)	CA471199	1:90 000	2024-08-16
CA471200 (Edn 1.000)	CA471200	1:90 000	2024-08-16
CA471201 (Edn 1.000)	CA471201	1:22 500	2024-08-16
CA471202 (Edn 1.000)	CA471202	1:22 500	2024-08-16
CA471205 (Edn 1.000)	CA471205	1:90 000	2024-08-16
CA471217 (Edn 1.000)	CA471217	1:90 000	2024-08-16
CA471218 (Edn 1.000)	CA471218	1:90 000	2024-08-16
CA4AL8GA (Edn 1.000)	Transit6700N11600W	1:90 000	2024-08-02
CA4AL8SA (Edn 1.000)	Transit6700N11500W	1:90 000	2024-08-02
CA4AL93A (Edn 1.000)	Transit6700N11400W	1:90 000	2024-08-02
CA4AL9DA (Edn 1.000)	Transit6700N11300W	1:90 000	2024-08-02
CA4ALC4A (Edn 1.000)	Transit6700N10400W	1:90 000	2024-08-16
CA4ALCEA (Edn 1.000)	Transit6700N10300W	1:90 000	2024-08-09
CA4AW86A (Edn 1.000)	Transit6800N11700W	1:90 000	2024-08-02
CA4AW8GA (Edn 1.000)	Transit6800N11600W	1:90 000	2024-08-02

S-57 ENC Number	Chart Title	ENC Compilation Scale	Published
CA4AW8SA (Edn 1.000)	Transit6800N11500W	1:90 000	2024-08-02
CA4AW93A (Edn 1.000)	Transit6800N11400W	1:90 000	2024-08-02
CA4AW9DA (Edn 1.000)	Transit6800N11300W	1:90 000	2024-08-02
CA4AWB7A (Edn 1.000)	Transit6800N10700W	1:90 000	2024-08-09
CA4AWBHA (Edn 1.000)	Transit6800N10600W	1:90 000	2024-08-16
CA4AWBTA (Edn 1.000)	Transit6800N10500W	1:90 000	2024-08-09
CA4AWC4A (Edn 1.000)	Transit6800N10400W	1:90 000	2024-08-09
CA4AWCEA (Edn 1.000)	Transit6800N10300W	1:90 000	2024-08-09
CA4B786A (Edn 1.000)	Transit6900N11700W	1:90 000	2024-08-02
CA4B78GA (Edn 1.000)	Transit6900N11600W	1:90 000	2024-08-02
CA4B78SA (Edn 1.000)	Transit6900N11500W	1:90 000	2024-08-02
CA4B793A (Edn 1.000)	Transit6900N11400W	1:90 000	2024-08-02
CA4B7B7A (Edn 1.000)	Transit6900N10700W	1:90 000	2024-08-09
CA4B7BHA (Edn 1.000)	Transit6900N10600W	1:22 500	2024-08-09
CA53MQ1A (Edn 1.000)	Liverpool Harbour	1:4 000	2024-08-09
CA53XQ6A (Edn 1.000)	Hantsport Wharves / Quais	1:2 000	2024-08-16
CA54GSUA (Edn 1.000)	CA54GSUA	1:11 000	2024-08-23
CA54HSUA (Edn 1.000)	CA54HSUA	1:11 000	2024-08-23
CA561SNA (Edn 1.000)	CA561SNA	1:11 000	2024-08-16
CA561SPA (Edn 1.000)	CA561SPA	1:11 000	2024-08-02
CA562SNA (Edn 1.000)	CA562SNA	1:11 000	2024-08-02
CA562SPA (Edn 1.000)	CA562SPA	1:11 000	2024-08-02
CA564SRA (Edn 1.000)	CA564SRA	1:11 000	2024-08-02
CA564SSA (Edn 1.000)	CA564SSA	1:4 000	2024-08-02
CA565SPA (Edn 1.000)	CA565SPA	1:6 000	2024-08-02
CA565SQA (Edn 1.000)	CA565SQA	1:6 000	2024-08-02
CA565SRA (Edn 1.000)	CA565SRA	1:6 000	2024-08-02
CA569SLA (Edn 1.000)	CA569SLA	1:4 000	2024-08-02
CA56FRAA (Edn 1.000)	CA56FRAA	1:4 000	2024-08-02
CA56FRBA (Edn 1.000)	CA56FRBA	1:4 000	2024-08-02
CA56GREA (Edn 1.000)	CA56GREA	1:11 000	2024-08-02
CA56GRFA (Edn 1.000)	CA56GRFA	1:11 000	2024-08-02
CA56GRGA (Edn 1.000)	CA56GRGA	1:11 000	2024-08-02
CA56GS8A (Edn 1.000)	CA56GS8A	1:11 000	2024-08-02
CA56GS9A (Edn 1.000)	CA56GS9A	1:11 000	2024-08-02
CA56JSBA (Edn 1.000)	CA56JSBA	1:6 000	2024-08-02
CA56KSBA (Edn 1.000)	CA56KSBA	1:6 000	2024-08-02

<b>New Editions</b>			
CA173369 (Edn 2.000)	Hudson Strait/Détroit d'Hudson - East	1:500 000	2024-08-30
CA543MCA (Edn 2.000)	Port4550N07350W	1:6 000	2024-08-09
CA55WSTA (Edn 3.000)	Port5150N05550W	1:11 000	2024-08-23
CA570101 (Edn 9.000)	Sooke Inlet to/à Parry Bay	1:10 000	2024-08-30
<b>Charts Permanently Withdrawn</b>			
CA370203	Approaches to/Approches à Juan de Fuca Strait	Cancelled by CA471218	
CA370208	Ucluelet Inlet to/à Nootka Sound		
CA370424	Nootka Sound to/à Quatsino Sound (part 1 of 2)		
CA370720	Nootka Sound to/à Quatsino Sound (part 2 of 2)		
CA373330	Queen Maud Gulf Western Portion/Partie Ouest		
CA373331	Approaches to/Approches à Cambridge Bay		
CA373334	Dease Strait		
CA373338	Lambert Channel and/et Cache Point Channel		
CA373341	Coronation Gulf Western Portion/Partie Ouest		
CA373343	Dolphin and Union Strait		
CA373346	Melville Sound	Cancelled by CA4AWB7A	
CA470279	Muchalet Inlet	Cancelled by CA471202	
CA470280	Head of Tlupana Inlet		
CA470333	Tofino Inlet to/à Millar Channel (Part 1 of 2)	Cancelled by CA471205	
CA470341	Millar Channel to/à Estevan Point (Part 1 of 2 Western half)		
CA470342	Millar Channel to/à Estevan Point (Part 2 of 2)		
CA470351	Nootka Sound (Part 1 of 2)	Cancelled by CA471201	
CA470352	Nootka Sound (Part 2 of 2)		
CA470354	Esperanza Inlet (Western Portion, Part 1 of 2)		
CA470355	Esperanza Inlet (Part 2 of 2)	Cancelled by CA471201	
CA470360	Kyuquot Sound (Part 2 of 2)	Cancelled by CA471200	
CA470434	Checleset Bay	Cancelled by CA471200	
CA473342	Kugluktuk		
CA576359	Chateau Bay		
CA576381	Fox Harbour		
CA576382	Battle Harbour	Cancelled by CA564SSA	
CA576383	Caribou Run	Cancelled by CA564SRA	
CA576503	Mary's Harbour	Cancelled by CA565SPA	

**\*802/24 Transport Canada - Ship Safety Bulletin #19/2024**

A new **Ship Safety Bulletin** has recently been posted on the [Transport Canada website](#).

To view or download this bulletin, please click on the link below:

**[SSB#19/2024](#) – Using pleasure craft as a non-pleasure craft  
RDIMS# 20356180**

Sign up for [e-Bulletin](#) to receive an e-mail notice each time a new Ship Safety Bulletin is published on our website.

Contact us at [marinesafety-securitemaritime@tc.gc.ca](mailto:marinesafety-securitemaritime@tc.gc.ca) or 1-855-859-3123 (Toll Free).

**\*804/24 Cap aux Oies à/to Sault-au-Cochon – Daybeacon Permanently Discontinued**

Reference chart: 1233

The following daybeacon has been permanently discontinued:

Aid Name	LL #	Position
Maillard	6892.15	47° 15' 30.7"N 070° 35' 06.2"W

(Q2024-198)

**\*805/24 Sault-au-Cochon à/to Québec – Daybeacons Permanently Discontinued**

Reference chart: 1317

The following daybeacons have been permanently discontinued:

Aid Name	LL #	Position
Neptune	6893.2	47° 09' 42.4"N 070° 36' 27.7"W
Twelve Foot Rock	6895.75	47° 06' 16.2"N 070° 40' 19.9"W

(Q2024-196, 197)

**\*806/24 Evandale to / à Ross Island – Unlit Buoy Permanently Established**

Reference chart: 4142

The following unlit buoy has been permanently established at the following coordinates:

Aid Name	LL #	Position
Washademoak Creek West cardinal buoy JWT	5132.015	45° 40' 50.5"N 066° 04' 46.0"W

(F2024-045)

**\*807/24 Demarcation Bay to à Philips Bay – Aids to Navigation Permanently Discontinued**

Reference chart: 7661

The following aids to navigation have been permanently discontinued:

Aid Name	LL #	Position
Avadlek Spit North	3109	69° 34' 10.1"N 139° 16' 25.4"W
Avadlek Spit South	3109.1	69° 33' 12.4"N 139° 18' 56.4"W
Wells Point (Hershel Island)	4505	69° 32' 59.4"N 139° 19' 13.7"W
Calton Point #1	4507	69° 30' 05.0"N 139° 07' 07.0"W
Workboat Passage #1 front range	4508	69° 32' 18.6"N 139° 08' 50.3"W
Workboat Passage #1 rear range	4509	69° 32' 27.7"N 139° 09' 08.3"W
Workboat Passage #2 front range	4510	69° 31' 51.1"N 139° 08' 00.8"W
Workboat Passage #2 rear range	4511	69° 31' 35.0"N 139° 05' 56.0"W
Workboat Passage #3 front range	4512	69° 33' 56.0"N 139° 13' 25.0"W
Workboat Passage #3 rear range	4513	69° 34' 00.0"N 139° 13' 18.0"W
Workboat Passage #4 front range	4514	69° 33' 44.4"N 139° 13' 03.7"W
Workboat Passage #4 rear range	4515	69° 33' 44.0"N 139° 12' 48.0"W
Calton Point	4621	69° 30' 08.0"N 139° 06' 40.0"W

(A2024-007 to 016, 018 to 020)



## Section 1A: Temporary and Preliminary Notices

### Reminder – Comment Period for Active Preliminary Notices

This is a reminder that the comment period is still open for the following active Preliminary notices:

Notice #	Reference Chart #	Aids Affected (LL #)	Intent of Notice
<b>Newfoundland and Labrador Coast</b>			
<a href="#">720(P)/24</a>	4530	378, 380	Notice of Proposed Changes
<b>Inland Waters</b>			
<a href="#">729(P)/24</a>	2241	5000.1	Rear Range to be Discontinued

Please refer to the [Notices to Mariners - Monthly Summary of Temporary and Preliminary Notices](#) publication for details.

### Newfoundland and Labrador Coast

#### Temporary Notices

#### \*808(T)/24 Cape St Mary's to / à Argentia – Marine Works – Dredging Operations

Reference chart: 4841

Debris removal, boulder removal, and dredging operations are underway in the areas bounded by the following coordinates:

Exit Channel:	Inner Channel:	Outer Channel:
47° 18.795'N 053° 58.168'W	47° 19.659'N 053° 57.518'W	47° 20.965'N 053° 58.704'W
47° 18.655'N 053° 57.852'W	47° 19.699'N 053° 57.007'W	47° 20.583'N 053° 57.292'W
47° 18.422'N 053° 58.067'W	47° 19.059'N 053° 56.972'W	47° 20.269'N 053° 57.533'W
47° 18.597'N 053° 58.448'W	47° 19.045'N 053° 57.484'W	47° 20.657'N 053° 58.975'W

Environmental monitoring buoys equipped with lights and radar reflectors deployed in:

47° 19.969'N 053° 59.099'W  
47° 20.917'N 053° 57.840'W  
47° 19.686'N 053° 56.798'W

Removed boulders are to be relocated to the areas bounded by the following coordinates:

Inner Channel Boulder Relocation Area:	Outer Channel Boulder Relocation Area:
47° 19.089'N 053° 57.115'W	47° 20.543'N 053° 57.405'W
47° 19.092'N 053° 57.036'W	47° 20.594'N 053° 57.376'W
47° 19.653'N 053° 57.067'W	47° 20.945'N 053° 58.703'W
47° 19.651'N 053° 57.147'W	47° 20.894'N 053° 58.732'W

Vessels will move to transit dredged material to offshore disposal areas in the vicinity of:

Placentia Sound Offshore Disposal Site:	The Pond Offshore Disposal Site:
47° 18.393'N 053° 55.372'W	47° 18.990'N 053° 59.576'W

Multiple vessels, barges and dredges will be involved in the operations, all will be monitoring VHF channel 16 and are requesting a wide berth of at least 100 meters.

Caution.

(NW-N-0870-24)

### **\*809(T)/24 Flemish Pass / Passe Flamande – Offshore Works**

Reference chart: 8012

MV Stornes/PCKX conducting subsea rock installation operations in the vicinity of  
46° 48' 00.0"N 048° 04' 00.0"W.

Wide berth of 0.5NM requested from non-project related vessels.

Caution.

(NW-N-0862-24)

---

## **Preliminary Notices**

No notices applicable for this edition.

---

## **Atlantic Coast**

---

## **Temporary Notices**

### **\*810(T)/24 Port de Montréal – Obstruction – Lost Anchor**

Reference chart: 1310

Anchor lost at the following coordinates:

45° 33' 54.0"N 073° 30' 42.0"W

(NW-C-2004-24)

### **\*811(T)/24 Sorel-Tracy à/to Varennes – Obstruction – Submerged Object**

Reference chart: 1311, 1312

Submerged steel cable at the following coordinates:

46° 03' 06.1"N 073° 08' 24.5"W

(NW-C-1869-24)

**\*812/24 Port de Québec – Waterway Information**

Reference: Notice 307(T)/22 is cancelled (Chart 1316).

Repair work completed on the Pierre-Laporte bridge.

**\*813/24 Port de Québec – Bridge Lights Relit**

Reference: Notice 709(T)/22 is cancelled (Chart 1316).

The four red lights located on the Pierre-Laporte bridge are relit.

---

**Preliminary Notices**

No notices applicable for this edition.

---

**Inland Waters**

---

**Temporary Notices**

**\*814(T)/24 Hamilton Harbour – Waterway Information – Shallow Depth Reported**

Reference chart: 2067

The southern section of the Pier 10 slip south of 43° 16' 26.1"N 079° 51' 01.9"W does not have the minimum seaway draft.

Mariners are to contact the Hamilton Harbour Master's office at 1 (905) 525-3412 to obtain soundings.

(NW-C-2395-23)

**\*815(T)/24 Port of Thunder Bay – Obstruction – Lost Anchor**

Reference chart: 2314

Anchor and chain lost at the following coordinates:

48° 19' 24.0"N 089° 09' 30.0"W

(NW-C-1623-24)

## Preliminary Notices

### Central Region

#### Comment Submission

Comments on proposed changes in preliminary (P) notices are solicited from mariners and other interested parties within three months of the initial publication date. Following this date, the notices will be cancelled. Any objections raised must state the facts on which they are based and should include supporting information on safety, commerce and public benefit.

Comments should be directed to the following:

Superintendent  
Aids to Navigation & Waterways  
Canadian Coast Guard, Central Region  
1550 D'Estimauville Avenue  
Québec, QC G1J 5E9  
Telephone: (418) 648-7450  
Emails:  
St. Lawrence Region: [DFO.AtoNStLawrence-StLaurentAalaN.MPO@dfo-mpo.gc.ca](mailto:DFO.AtoNStLawrence-StLaurentAalaN.MPO@dfo-mpo.gc.ca)  
Great Lakes Region:  
[DFO.CCGCentralAtoNGreatLakes-GrandsLacsAalaNCentreGCC.MPO@dfo-mpo.gc.ca](mailto:DFO.CCGCentralAtoNGreatLakes-GrandsLacsAalaNCentreGCC.MPO@dfo-mpo.gc.ca)

### **\*816(P)/24 Chats Falls à/to Chenaux – Aid to Navigation to be Discontinued**

Reference chart: 1551

The Canadian Coast Guard proposes to permanently discontinue the following aid to navigation:

Aid Name	LL #	Position
Sand Point	1305	45° 29' 19.7"N 076° 26' 03.9"W

Initial publication date: Friday, August 30, 2024

[Comment submission deadline](#): Thursday, November 28, 2024

(D2024-083)

## Section 2: Chart Corrections

### 2258 - Bayfield Sound and Approaches/et les approches - New Edition - 16-JUN-1989 - NAD 1927

		LNM/D. 25-AUG-2023
02-AUG-2024		
Delete	depth of 89 feet (See Chart 1, I10)	45°56'32.6"N 082°48'56.7"W  DFO(6605319-01)
Delete	depth of 92 feet (See Chart 1, I10)	45°56'49.2"N 082°48'34.9"W  DFO(6605319-02)
Add	marine farm (See Chart 1, K48.1, K48.2)	45°56'47.8"N 082°48'39.8"W  DFO(6605319-03)
Add	marine farm (See Chart 1, K48.1, K48.2)	45°56'33.8"N 082°49'00.1"W  DFO(6605319-04)

### 4013 - Halifax to / à Sydney - New Edition - 06-SEP-2002 - NAD 1983

		LNM/D. 21-JUN-2024
16-AUG-2024		
Amend	Fl(2) 18s42ft9M to read Fl 5s35ft9M against light (See Chart 1, P16) This notice affects Electronic Navigational Chart: CA376691, CA476610, CA576611 (G2024125) LL(918) DFO(6311286-01)	45°45'52.6"N 062°40'54.2"W

### 4020 - Strait of Belle Isle / Détroit de Belle Isle - New Edition - 26-JUL-2002 - NAD 1983

		LNM/D. 23-FEB-2024
16-AUG-2024		
Delete	red starboard hand lighted pillar buoy Fl R, marked NPW2 (See Chart 1, Qb)	51°37'43.1"N 056°36'45.8"W  (N2024071) LL(229.1) DFO(6311215-01)
Add	black, yellow and black East cardinal lighted pillar buoy VQ(3) 5s, marked NPW (See Chart 1, Q130.3)	51°37'30.6"N 056°37'01.0"W  (N2024071) LL(229.1) DFO(6311215-02)

### 4021 - Pointe Amour à / to Cape Whittle et / and Cape George - New Edition - 01-NOV-2002 - NAD 1983

		LNM/D. 24-MAY-2024
16-AUG-2024		
Delete	fog signal Fog Sig against light (See Chart 1, R1)	50°37'59.1"N 057°19'17.6"W  (N2024064) DFO(6311208-01)

### 4023 - Northumberland Strait / Détroit de Northumberland - New Edition - 27-DEC-2002 - World Geodetic System 1984

		LNM/D. 24-MAY-2024
16-AUG-2024		
Amend	Fl(2) 18s42ft9M to read Fl 5s35ft9M against light (See Chart 1, P16) This notice affects Electronic Navigational Chart: CA376691, CA476610, CA576611 (G2024125) LL(918) DFO(6311286-01)	45°45'57.6"N 062°40'45.7"W

### 4145 - Mactaquac to / à Ritchie - Sheet/Feuille A - New Edition - 04-JAN-2002 - NAD 1983

		LNM/D. 02-DEC-2022
16-AUG-2024		
Add	red starboard hand conical buoy, marked M32/2 (See Chart 1, Qb)	45°55'22.3"N 067°02'08.0"W  LL(5144.36) DFO(6311440-01)

**4233 - Cape Canso to / à Country Island - New Chart - 11-JAN-1991 - NAD 1983**

30-AUG-2024

LNMD. 21-JUN-2024

Reposition red starboard hand conical buoy, marked TC4  
(See Chart 1, Qb)  
This notice affects Electronic Navigational Chart: CA376067

from 45°13'45.3"N 061°13'55.6"W  
to 45°13'55.8"N 061°13'55.8"W

(G2024197) DFO(6311420-01)

**4234 - St Marys River - New Chart - 10-APR-1987 - NAD 1983**

30-AUG-2024

LNMD. 08-SEP-2023

Reposition red starboard hand conical buoy, marked VK46  
(See Chart 1, Qb)

from 45°06'12.5"N 061°57'49.2"W  
to 45°06'17.4"N 061°57'49.2"W

(F2024036) DFO(6311383-01)

**4266 - Sydney Harbour - New Edition - 28-FEB-2014 - NAD 1983**

30-AUG-2024

LNMD. 19-JUL-2024

Add red starboard hand lighted spar buoy FI R, marked S10  
(See Chart 1, Qb)

46°13'02.9"N 060°13'07.2"W

(G2024143) LL(789.8) DFO(6311355-01)

Amend Q R to read FI R against red starboard hand lighted spar buoy Q R,  
marked S14  
(See Chart 1, Qb)

46°11'36.9"N 060°13'26.2"W

(G2024146) LL(789.12) DFO(6311358-01)

Amend Q R to read FI R against red starboard hand lighted spar buoy Q R,  
marked S16  
(See Chart 1, Qb)

46°10'57.4"N 060°13'05.4"W

(G2024147) LL(789.14) DFO(6311359-01)

Reposition red starboard hand lighted spar buoy FI R, marked SA8  
(See Chart 1, Qb)

from 46°11'27.5"N 060°15'49.1"W  
to 46°11'26.2"N 060°15'49.2"W

(G2024199) LL(777.02) DFO(6311452-01)

**4279 - Bras D'Or Lake - New Edition - 25-SEP-2020 - World Geodetic System 1984**

30-AUG-2024

LNMD. 14-MAY-2021

Amend F R to read Iso R against light  
(See Chart 1, P16)

45°37'32.8"N 060°56'51.2"W

(G2024130) LL(732) DFO(6311424-01)

**4279 - Lennox Passage - New Edition - 25-SEP-2020 - World Geodetic System 1984**

30-AUG-2024

LNMD. 14-MAY-2021

Amend FR to read Iso R against light  
(See Chart 1, P16)

45°37'32.8"N 060°56'51.2"W

(G2024130) LL(732) DFO(6311424-01)

**4365 - Dingwall Harbour - New Edition - 06-DEC-2002 - NAD 1983**

30-AUG-2024

LNMD. 04-MAR-2022

Delete red starboard hand conical lighted buoy FI R, marked KA6  
(See Chart 1, Qb)  
This notice affects Electronic Navigational Chart: CA576550

46°54'14.1"N 060°27'15.5"W

(G2024205) LL(857.2) DFO(6311426-01)

Add	red starboard hand lighted pillar buoy FI R, marked KA6 (See Chart 1, Qb) This notice affects Electronic Navigational Chart: CA576550	46°54'14.1"N 060°27'11.5"W  (G2024205) LL(857.2) DFO(6311426-02)
<b>4381 - Chester Harbour - New Edition - 28-APR-2023 - World Geodetic System 1984</b>		
	23-AUG-2024	LNMD. 07-JUN-2024
Amend	FI 6s31m to read LFI 6s31m against light (See Chart 1, P16)	44°30'53.7"N 064°13'57.2"W  LL(456) DFO(6311323-01)
<b>4381 - Mahone Bay - New Edition - 28-APR-2023 - World Geodetic System 1984</b>		
	23-AUG-2024	LNMD. 07-JUN-2024
Amend	FI 6s31m4M to read LFI 6s31m4M against light (See Chart 1, P16)	44°30'53.7"N 064°13'57.2"W  LL(456) DFO(6311323-01)
<b>4404 - Cape George to / à Pictou - New Edition - 28-FEB-2014 - NAD 1983</b>		
	16-AUG-2024	LNMD. 27-OCT-2023
Amend	FI(2) 18s13m9M to read FI 5s11m9M against light (See Chart 1, P16) This notice affects Electronic Navigational Chart: CA376691, CA476610, CA576611 (G2024125) LL(918) DFO(6311286-01)	45°45'52.4"N 062°40'50.6"W  (G2024125) LL(918) DFO(6311286-01)
<b>4405 - Pictou Island to / aux Tryon Shoals - New Edition - 21-FEB-2003 - NAD 1983</b>		
	16-AUG-2024	LNMD. 15-MAR-2024
Amend	FI(2) 18s42ft9M to read FI 5s35ft9M against light (See Chart 1, P16) This notice affects Electronic Navigational Chart: CA376691, CA476610, CA576611 (G2024125) LL(918) DFO(6311286-01)	45°45'53.6"N 062°40'49.2"W  (G2024125) LL(918) DFO(6311286-01)
<b>4426 - Dalhousie Harbour - New Edition - 02-AUG-2002 - NAD 1983</b>		
	09-AUG-2024	LNMD. 05-JUL-2024
Replace	depth of 26 feet with depth of 24 feet (See Chart 1, I10)	48°04'22.3"N 066°22'12.9"W  DFO(6311187-01)
Replace	depth of 16 feet with depth of 14 feet (See Chart 1, I10)	48°04'20.7"N 066°22'06.2"W  DFO(6311187-02)
Replace	depth of 31 feet with depth of 28 feet (See Chart 1, I10)	48°04'30.4"N 066°22'02.5"W  DFO(6311187-03)
Replace	depth of 23 feet with depth of 16 feet (See Chart 1, I10)	48°04'28.4"N 066°21'58.5"W  DFO(6311187-04)
Add	depth of 4 feet (See Chart 1, I10)	48°04'19.7"N 066°21'39.7"W  DFO(6311187-05)

Notices to Mariners – Monthly Eastern Edition  
Section 2: Chart Corrections

Delete	dredged area with depth of 23ft (2013) (See Chart 1, I22)	joining 48°04'18.7"N 066°21'28.8"W 48°04'16.9"N 066°21'37.6"W 48°04'16.0"N 066°21'55.8"W 48°04'14.5"N 066°21'55.6"W 48°04'14.2"N 066°21'49.2"W 48°04'13.3"N 066°21'23.3"W and 48°04'18.7"N 066°21'28.8"W <i>DFO(6311187-06)</i>
Replace	depth of 21 feet with depth of 18 feet (See Chart 1, I10)	48°04'14.7"N 066°21'55.1"W  <i>DFO(6311187-07)</i>
Replace	depth of 22 feet with depth of 21 feet (See Chart 1, I10)	48°04'16.1"N 066°21'52.8"W  <i>DFO(6311187-08)</i>
Replace	depth of 21 feet with depth of 17 feet (See Chart 1, I10)	48°04'14.7"N 066°21'48.5"W  <i>DFO(6311187-09)</i>
Add	depth of 21 feet (See Chart 1, I10)	48°04'16.3"N 066°21'47.6"W  <i>DFO(6311187-10)</i>
Delete	depth of 19 feet (See Chart 1, I10)	48°04'16.5"N 066°21'43.3"W  <i>DFO(6311187-11)</i>
Add	depth of 7 feet (See Chart 1, I10)	48°04'16.8"N 066°21'43.7"W  <i>DFO(6311187-12)</i>
Replace	depth of 15 feet with depth of 11 feet (See Chart 1, I10)	48°04'17.1"N 066°21'40.7"W  <i>DFO(6311187-13)</i>
Add	depth of 12 feet (See Chart 1, I10)	48°04'14.2"N 066°21'42.8"W  <i>DFO(6311187-14)</i>
Delete	depth of 20 feet (See Chart 1, I10)	48°04'15.4"N 066°21'40.3"W  <i>DFO(6311187-15)</i>
Add	depth of 18 feet (See Chart 1, I10)	48°04'15.2"N 066°21'39.5"W  <i>DFO(6311187-16)</i>
Replace	depth of 20 feet with depth of 11 feet (See Chart 1, I10)	48°04'14.2"N 066°21'39.9"W  <i>DFO(6311187-17)</i>
Replace	depth of 12 feet with depth of 8 feet (See Chart 1, I10)	48°04'13.5"N 066°21'36.3"W  <i>DFO(6311187-18)</i>
Add	depth of 26 feet (See Chart 1, I10)	48°04'16.0"N 066°21'36.3"W  <i>DFO(6311187-19)</i>



Add	depth of 29 feet (See Chart 1, I10)	48°04'16.7"N 066°21'32.2"W <i>DFO(6311187-20)</i>
Add	depth of 16 feet (See Chart 1, I10)	48°04'15.1"N 066°21'32.7"W <i>DFO(6311187-21)</i>
Replace	depth of 16 feet with depth of 11 feet (See Chart 1, I10)	48°04'14.1"N 066°21'32.1"W <i>DFO(6311187-22)</i>
Replace	depth of 10 feet with depth of 8 feet (See Chart 1, I10)	48°04'12.8"N 066°21'29.8"W <i>DFO(6311187-23)</i>
Add	depth of 22 feet (See Chart 1, I10)	48°04'15.3"N 066°21'29.3"W <i>DFO(6311187-24)</i>
Add	depth of 30 feet (See Chart 1, I10)	48°04'14.9"N 066°21'26.5"W <i>DFO(6311187-25)</i>
Add	depth of 27 feet (See Chart 1, I10)	48°04'13.8"N 066°21'24.5"W <i>DFO(6311187-26)</i>
Delete	CAUTION NO. 1 Owing to the continual silting, dredging is carried out periodically and ship masters are cautioned that varying amounts of refilling must be expected. (See Chart 1, A14)	48°03'43.5"N 066°21'56.9"W <i>DFO(6311187-27)</i>
Delete	Voir ATTENTION N° 1 / See CAUTION NO. 1 (See Chart 1, A14)	48°04'16.3"N 066°21'36.1"W <i>DFO(6311187-28)</i>
<b>4426 - Rivière Ristigouche / Restigouche River - New Edition - 02-AUG-2002 - NAD 1983</b> 09-AUG-2024		LNMD. 05-JUL-2024
Delete	limits of dredged area (See Chart 1, I20)	joining 48°04'18.7"N 066°21'28.8"W 48°04'16.9"N 066°21'37.6"W 48°04'16.0"N 066°21'55.8"W 48°04'14.5"N 066°21'55.6"W 48°04'14.2"N 066°21'49.2"W 48°04'13.3"N 066°21'23.3"W and 48°04'18.7"N 066°21'28.8"W <i>DFO(6311187-06)</i>
Delete	Voir ATTENTION N° 1 / See CAUTION NO. 1 (See Chart 1, A14)	48°03'37.1"N 066°18'19.1"W <i>DFO(6311187-28)</i>
<b>4448 - Mabou Harbour - New Edition - 13-DEC-2002 - NAD 1983</b> 30-AUG-2024		LNMD. 11-NOV-2022
Reposition	red starboard hand conical lighted buoy FI R, marked VJ2 (See Chart 1, Qb) This notice affects Electronic Navigational Chart: CA576663	from 46°05'23.6"N 061°28'52.7"W to 46°05'23.0"N 061°28'55.4"W <i>(G2024209) LL(874.53) DFO(6311454-01)</i>

Reposition green port hand lighted can buoy FI G, marked VJ1 from 46°05'26.3"N 061°28'52.3"W  
(See Chart 1, Qc) to 46°05'25.0"N 061°28'53.7"W  
This notice affects Electronic Navigational Chart: CA576663  
(G2024210) LL(874.52) DFO(6311455-01)

**4466 - Hillsborough Bay - New Edition - 21-MAR-2003 - NAD 1983**  
16-AUG-2024

LNMD. 15-MAR-2024

Reposition red starboard hand lighted spar buoy Q R, marked NV4 from 46°02'46.2"N 062°57'15.5"W  
(See Chart 1, Qb) to 46°02'42.2"N 062°57'15.5"W  
This notice affects Electronic Navigational Chart: CA476179  
(G2024131) LL(980.5) DFO(6311345-01)

**4506 - Fourché Harbour - New Edition - 05-DEC-2003 - NAD 1983**  
23-AUG-2024

Amend FI6s81ft to read LFI 6s81ft against light 50°30'43.6"N 056°16'33.0"W  
(See Chart 1, P16)  
(N2024124) LL(255) DFO(6311335-01)

**4506 - Grévigneaux Harbour and / et Aiguillettes Harbour - New Edition - 05-DEC-2003 - NAD 1983**  
23-AUG-2024

Amend FI 4s50ft to read FI 5s50ft against light 50°43'14.3"N 056°06'49.4"W  
(See Chart 1, P16)  
(N2024130) LL(250) DFO(6311341-01)

**4506 - Hooping Harbour - New Edition - 05-DEC-2003 - NAD 1983**  
23-AUG-2024

Amend FI 3s 71ft to read FI 5s71ft against light 50°35'47.3"N 056°12'07.9"W  
(See Chart 1, P16)  
LL(254) DFO(6311343-04)

**4515 - Hare Bay - New Edition - 20-NOV-1998 - NAD 1983**  
23-AUG-2024

LNMD. 09-FEB-2024

Amend FI to read FI 5s against light 51°15'20.2"N 055°56'03.0"W  
(See Chart 1, P16)  
(N2024126) LL(244) DFO(6311337-01)

Amend FI R to read FI R 5s against light 51°12'03.7"N 055°59'28.5"W  
(See Chart 1, P16)  
(N2024127) LL(245) DFO(6311338-01)

**4518 - Ariege Bay - New Edition - 08-NOV-2002 - NAD 1983**  
23-AUG-2024

LNMD. 09-FEB-2024

Amend FI to read FI 5s against light 51°15'20.2"N 055°56'02.5"W  
(See Chart 1, P16)  
(N2024126) LL(244) DFO(6311337-01)

Amend FI R to read FI R 5s against light 51°12'04.4"N 055°59'28.5"W  
(See Chart 1, P16)  
(N2024127) LL(245) DFO(6311338-01)

**4521 - Baie Verte - New Edition - 04-JUL-2003 - NAD 1983**  
09-AUG-2024

LNMD. 02-JUL-2010

Amend KV3 to read KC1 against green port hand lighted pillar buoy FI G 50°03'59.7"N 056°02'59.8"W  
(See Chart 1, Qc)  
(N2024012) LL(267.9) DFO(6311143-01)

Reposition green port hand lighted spar buoy FI G, marked KC3 from 50°03'14.8"N 056°06'31.3"W  
(See Chart 1, Qc) to 50°03'13.0"N 056°06'31.3"W  
(N2024080) LL(268.1) DFO(6311226-01)

23-AUG-2024

LNMD. 09-AUG-2024

Amend FI G to read FI G 5s against light 50°03'01.1"N 056°06'35.2"W  
(See Chart 1, P16) (N2024103) LL(268.5) DFO(6311304-01)

**4522 - Approaches to / Approches À La Scie Harbour - New Edition - 10-OCT-2003 - NAD 1983**

16-AUG-2024

LNMD. 28-JUN-2024

Amend FI R to read FI R 5s against light 49°57'42.5"N 055°36'10.3"W  
(See Chart 1, P16) (N2024101) LL(267) DFO(6311302-01)

Amend FI G to read FI G 5s against light 49°57'46.2"N 055°36'13.6"W  
(See Chart 1, P16) (N2024102) LL(267.3) DFO(6311303-01)

**4522 - La Scie Harbour - New Edition - 10-OCT-2003 - NAD 1983**

16-AUG-2024

LNMD. 28-JUN-2024

Amend FI G to read FI G 5s against light 49°57'46.3"N 055°36'13.8"W  
(See Chart 1, P16) (N2024102) LL(267.3) DFO(6311303-01)

**4523 - Little Bay Arm and Approaches / et les approches - New Edition - 20-DEC-2002 - NAD 1983**

09-AUG-2024

LNMD. 23-DEC-2011

Delete green port hand lighted pillar buoy FI G, marked DB1 49°36'41.9"N 055°53'11.3"W  
(See Chart 1, Qc) (N2024057) LL(336) DFO(6311189-01)

Add yellow, black and yellow West cardinal lighted spar buoy Q(9) 15s, 49°36'41.9"N 055°53'11.3"W  
marked DBB  
(See Chart 1, Q130.3) (N2024057) LL(336) DFO(6311189-02)

16-AUG-2024

LNMD. 09-AUG-2024

Delete light FIR 49°35'26.2"N 055°56'07.9"W  
(See Chart 1, P1) (N2024105) LL(336.28) DFO(6311294-01)

**4530 - Hamilton Sound: Eastern Portion / Partie-est - New Edition - 15-MAR-2002 - NAD 1983**

16-AUG-2024

LNMD. 17-NOV-2023

Delete red starboard hand lighted pillar buoy FI R, marked J4 49°28'44.9"N 053°54'08.6"W  
(See Chart 1, Qb) (N2024084) LL(402) DFO(6311229-01)

Add yellow and black South cardinal lighted pillar buoy Q(6)+LFI 15s, marked 49°28'44.9"N 053°54'08.6"W  
JMS  
(See Chart 1, Q130.3) (N2024084) LL(402) DFO(6311229-02)

Amend FI R to read FI R 5s against light 49°28'25.0"N 054°03'27.0"W  
(See Chart 1, P16) (N2024108) LL(393.7) DFO(6311308-01)

Amend FI 4s10m to read FI 5s10m5M against light  
(See Chart 1, P16) 49°26'55.9"N 054°13'41.6"W  
(N2024111) LL(389) DFO(6311315-01)

Amend FI R to read FI R 5s against light  
(See Chart 1, P16) 49°28'28.9"N 054°03'17.6"W  
(N2024112) LL(393.4) DFO(6311316-01)

**4583 - St. Julien Island to / à Hooping Harbour including / y compris Canada Bay - New Edition - 31-MAY-2002 - Unknown**

23-AUG-2024 LNM/D. 26-JUL-2024

Amend FI6s81ft to read LFI 6s81ft against light  
(See Chart 1, P16) 50°30'53.7"N 056°16'47.7"W  
(N2024124) LL(255) DFO(6311335-01)

Amend FI3s193ft5M to read FI 5s193ft5M against light  
(See Chart 1, P16) 50°51'33.6"N 055°53'38.2"W  
(N2024128) LL(248) DFO(6311339-01)

Amend FI 3s41ft to read LFI 10s41ft against light  
(See Chart 1, P16) 50°42'12.1"N 055°38'14.9"W  
(N2024129) LL(249) DFO(6311340-01)

Amend FI 4s50ft to read FI 5s50ft against light  
(See Chart 1, P16) 50°43'22.1"N 056°07'01.8"W  
(N2024130) LL(250) DFO(6311341-01)

Amend FI 3s 71ft to read FI 5s71ft against light  
(See Chart 1, P16) 50°35'55.6"N 056°12'24.0"W  
LL(254) DFO(6311343-03)

**4585 - Green Head to / à Little Bay Island - New Edition - 30-MAY-2003 - NAD 1983**

09-AUG-2024 LNM/D. 23-DEC-2011

Delete green port hand lighted pillar buoy FI G, marked DB1  
(See Chart 1, Qc) 49°36'42.5"N 055°53'10.8"W  
(N2024057) LL(336) DFO(6311189-01)

Add yellow, black and yellow West cardinal lighted spar buoy Q(9) 15s,  
marked DBB  
(See Chart 1, Q130.3) 49°36'41.9"N 055°53'11.3"W  
(N2024057) LL(336) DFO(6311189-02)

16-AUG-2024 LNM/D. 09-AUG-2024

Delete light FIR  
(See Chart 1, P1) 49°35'25.3"N 055°56'09.4"W  
(N2024105) LL(336.28) DFO(6311294-01)

23-AUG-2024 LNM/D. 16-AUG-2024

Amend FI R to read FI R 5s against light  
(See Chart 1, P16) 49°38'34.1"N 055°53'44.9"W  
(N2024104) LL(335.5) DFO(6311305-01)

**4642 - Lamaline Harbour - New Edition - 08-NOV-2002 - NAD 1983**

16-AUG-2024 LNM/D. 05-JUL-2024

Delete red starboard hand lighted spar buoy FI R, marked PG4  
(See Chart 1, Qb) 46°51'21.1"N 055°49'55.0"W  
(N2024118) LL(78.3) DFO(6311321-01)

**4661 - Bear Head to / à Cow Head - New Edition - 04-JUL-2003 - NAD 1983**

23-AUG-2024

LNMD. 24-MAY-2024

Amend FI to read FI 5s against light  
(See Chart 1, P16)  
This notice affects Electronic Navigational Chart: CA576710  
49°30'42.2"N 057°52'26.2"W  
(N2024133) LL(205) DFO(6311344-01)

**4663 - Cow Head to / à Pointe Riche - New Edition - 01-AUG-2003 - NAD 1983**

16-AUG-2024

LNMD. 17-MAR-2023

Delete fog signal Fog Sig 30 sec against light  
(See Chart 1, R20)  
50°38'03.0"N 057°19'18.1"W  
(N2024064) DFO(6311208-01)

**4668 - Pinware Bay - New Edition - 04-JUL-2003 - NAD 1983**

16-AUG-2024

LNMD. 22-JUL-2022

Delete red starboard hand lighted pillar buoy FI R, marked NPW2  
(See Chart 1, Qb)  
51°37'30.3"N 056°37'01.1"W  
(N2024071) LL(229.1) DFO(6311215-01)

Add black, yellow and black East cardinal lighted pillar buoy VQ(3) 5s,  
marked NPW  
(See Chart 1, Q130.3)  
51°37'30.6"N 056°37'01.0"W  
(N2024071) LL(229.1) DFO(6311215-02)

**4679 - Hawkes Bay, Port Saunders, Back Arm - New Edition - 29-NOV-2002 - NAD 1983**

16-AUG-2024

LNMD. 24-MAR-2023

Delete fog signal Fog Sig 30 s against light  
(See Chart 1, R20)  
50°37'59.0"N 057°19'20.2"W  
(N2024064) DFO(6311208-01)

**4680 - Hawkes Bay to / à Ste Geneviève Bay including / y compris St. John Bay - New Edition - 07-NOV-2003 - NAD 1983**

16-AUG-2024

LNMD. 23-FEB-2024

Delete fog signal Fog Sig 30s against light  
(See Chart 1, R20)  
50°38'00.7"N 057°19'20.6"W  
(N2024064) DFO(6311208-01)

**4820 - Cape Freels to / à Exploits Islands - New Chart - 01-JUL-2005 - NAD 1983**

16-AUG-2024

LNMD. 12-JAN-2024

Delete light FI  
(See Chart 1, P1)  
This notice affects Electronic Navigational Chart: CA576373  
49°10'17.3"N 053°31'49.5"W  
(N2024059) LL(421) DFO(6311199-01)

Delete legend Fog Sig 30s against light  
(See Chart 1, R1, R20)  
49°41'12.8"N 054°33'24.6"W  
(N2024060) LL(363) DFO(6311200-01)

Delete red starboard hand lighted pillar buoy FI R, marked J4  
(See Chart 1, Qb)  
49°28'44.9"N 053°54'08.6"W  
(N2024084) LL(402) DFO(6311229-01)

Add yellow and black South cardinal lighted pillar buoy Q(6)+LFI 15s, marked  
JMS  
(See Chart 1, Q130.3)  
49°28'44.9"N 053°54'08.6"W  
(N2024084) LL(402) DFO(6311229-02)

Amend FI 4s10m5M to read FI 5s10m5M against light  
(See Chart 1, P16) 49°26'55.9"N 054°13'41.6"W  
(N2024111) LL(389) DFO(6311315-01)

**4821 - White Bay and / et Notre Dame Bay - New Chart - 23-APR-2004 - NAD 1983**  
09-AUG-2024

LN/M/D. 05-JAN-2024

Amend KV3 to read KC1 against green port hand lighted pillar buoy FI G  
(See Chart 1, Qc) 50°03'59.7"N 056°02'59.8"W  
(N2024012) LL(267.9) DFO(6311143-01)

Add light FI G 5s  
(See Chart 1, P1) 49°54'50.4"N 055°33'31.3"W  
(N2024055) LL(326.05) DFO(6311181-01)

Delete green port hand lighted pillar buoy FI G, marked DB1  
(See Chart 1, Qc) 49°36'41.9"N 055°53'07.7"W  
(N2024057) LL(336) DFO(6311189-01)

Add yellow, black and yellow West cardinal lighted spar buoy Q(9) 15s,  
marked DBB  
(See Chart 1, Q130.3) 49°36'41.9"N 055°53'11.3"W  
(N2024057) LL(336) DFO(6311189-02)

23-AUG-2024

LN/M/D. 09-AUG-2024

Amend FI G to read FI G 5s against light  
(See Chart 1, P16) 50°03'00.8"N 056°06'35.0"W  
(N2024103) LL(268.5) DFO(6311304-01)

Amend FI R to read FI R 5s against light  
(See Chart 1, P16) 49°38'36.6"N 055°53'44.7"W  
(N2024104) LL(335.5) DFO(6311305-01)

Amend FI 4s30m7M to read FI 5s30m7M against light  
(See Chart 1, P16) 49°58'41.1"N 055°51'20.6"W  
This notice affects Electronic Navigational Chart: CA576643  
(N2024120) LL(264) DFO(6311331-01)

Amend FI 4s21m6M to read FI 5s21m3M against light  
(See Chart 1, P16) 50°11'55.5"N 055°44'42.5"W  
(N2024121) LL(257.5) DFO(6311332-01)

Amend FI to read FI 5s against light  
(See Chart 1, P16) 50°06'52.9"N 056°07'12.9"W  
(N2024122) LL(257.2) DFO(6311333-01)

Amend FI 3s46m7M to read FI 5s46m7M against light  
(See Chart 1, P16) 50°09'10.8"N 056°08'34.4"W  
(N2024125) LL(257) DFO(6311336-01)

**4822 - Cape St John to / à St Anthony - New Chart - 30-JUN-2006 - NAD 1983**  
09-AUG-2024

LN/M/D. 24-NOV-2023

Amend KV3 to read KC1 against green port hand lighted pillar buoy FI G  
(See Chart 1, Qc) 50°03'59.7"N 056°02'59.8"W  
(N2024012) LL(267.9) DFO(6311143-01)

23-AUG-2024		LNMD. 09-AUG-2024
Amend	FI 4s30m7M to read FI 5s30m7M against light (See Chart 1, P16) This notice affects Electronic Navigational Chart: CA576643	49°58'41.1"N 055°51'20.6"W  (N2024120) LL(264) DFO(6311331-01)
Amend	FI 4s21m6M to read FI 5s21m3M against light (See Chart 1, P16)	50°11'57.1"N 055°44'40.7"W  (N2024121) LL(257.5) DFO(6311332-01)
Amend	FI to read FI 5s against light (See Chart 1, P16)	50°06'52.9"N 056°07'12.9"W  (N2024122) LL(257.2) DFO(6311333-01)
Amend	FI 6s25m6M to read LFI 6s25m5M against light (See Chart 1, P16)	50°30'44.6"N 056°16'32.2"W  (N2024124) LL(255) DFO(6311335-01)
Amend	FI 3s46m7M to read FI 5s46m7M against light (See Chart 1, P16)	50°09'10.8"N 056°08'34.4"W  (N2024125) LL(257) DFO(6311336-01)
Amend	FI 6s to read FI 5s against light (See Chart 1, P16)	51°15'20.2"N 055°56'02.1"W  (N2024126) LL(244) DFO(6311337-01)
Amend	FI R 6s to read FI R 5s against light (See Chart 1, P16)	51°12'04.2"N 055°59'28.1"W  (N2024127) LL(245) DFO(6311338-01)
Amend	FI 3s 59m 6M to read FI 5s59m5M against light (See Chart 1, P16)	50°51'40.4"N 055°53'23.6"W  (N2024128) LL(248) DFO(6311339-01)
Amend	FI 3s12m7M to read LFI 10s12m8M against light (See Chart 1, P16)	50°42'18.4"N 055°37'46.3"W  (N2024129) LL(249) DFO(6311340-01)
Amend	FI 15m7M to read FI 5s15m7M against light (See Chart 1, P16)	50°43'13.9"N 056°06'49.1"W  (N2024130) LL(250) DFO(6311341-01)
Delete	light FI 3s22m6M (See Chart 1, P1)	50°36'03.6"N 056°12'09.3"W  (N2024132) LL(254) DFO(6311343-01)
Add	light FI 5s22m5M (See Chart 1, P1)	50°35'48.2"N 056°12'08.2"W LL(254) DFO(6311343-02)

**4825 - Burgeo and / et Ramea Islands - New Chart - 01-MAR-2002 - NAD 1983**

16-AUG-2024		LNMD. 28-APR-2023
Reposition	red starboard hand lighted spar buoy FIR, marked QR2 (See Chart 1, Qb)	from 47°30'46.2"N 057°22'32.5"W to 47°30'46.1"N 057°22'36.6"W (N2024116) LL(140.51) DFO(6311319-01)

**4831 - Fortune Bay: Northern Portion / Partie Nord - New Chart - 26-DEC-1986 - NAD 1983**

16-AUG-2024

LNMD. 26-JUL-2024

Add light FI Y 5s  
(See Chart 1, P1) 47°29'16.5"N 055°25'15.4"W  
(N2024106) LL(118.1) DFO(6311306-01)

Amend FI G to read FI G 5s against light  
(See Chart 1, P16) 47°27'05.3"N 055°33'27.5"W  
(N2024107) LL(119.5) DFO(6311307-01)

**4832 - Fortune Bay: Southern Portion / Partie Sud - New Chart - 02-OCT-1987 - NAD 1983**

16-AUG-2024

LNMD. 15-DEC-2023

Add light FI Y 5s  
(See Chart 1, P1) 47°29'16.5"N 055°25'15.4"W  
(N2024106) LL(118.1) DFO(6311306-01)

Amend FI G to read FI G 5s against light  
(See Chart 1, P16) 47°27'05.2"N 055°33'28.3"W  
(N2024107) LL(119.5) DFO(6311307-01)

**4846 - St John's Harbour - New Edition - 15-DEC-1995 - NAD 1983**

02-AUG-2024

LNMD. 07-JUL-2023

Amend FIR to read FI R 3s against light  
(See Chart 1, P16) 47°34'00.7"N 052°41'15.7"W  
(N2024039) LL(500) DFO(6311170-01)

**4853 - Trinity Bay: Northern Portion / Partie Nord - New Edition - 30-JUL-1999 - NAD 1983**

30-AUG-2024

LNMD. 26-JUL-2024

Add light FI G 5s4M  
(See Chart 1, P1) 48°22'58.0"N 053°17'45.0"W  
(N2024136) LL(463.51) DFO(6311368-01)

**4855 - Bonavista Bay: Southern Portion / Partie sud - New Chart - 06-JUN-1997 - NAD 1983**

16-AUG-2024

LNMD. 19-JAN-2024

Amend FI G to read FI G 5s against light  
(See Chart 1, P16) 48°26'46.2"N 053°39'04.3"W  
(N2024109) LL(442.14) DFO(6311309-01)

Amend FI Y to read FI Y 5s against light  
(See Chart 1, P16) 48°27'14.7"N 053°33'20.2"W  
(N2024110) LL(442.519) DFO(6311310-01)

**4857 - Indian Bay to / à Wadham Islands - New Chart - 29-OCT-1999 - NAD 1983**

16-AUG-2024

LNMD. 17-NOV-2023

Delete light FI  
(See Chart 1, P1) 49°10'17.3"N 053°31'49.5"W  
This notice affects Electronic Navigational Chart: CA576373  
(N2024059) LL(421) DFO(6311199-01)

**4858 - Greenspond Harbour to / à Pound Cove - New Chart - 25-DEC-1998 - NAD 1983**

16-AUG-2024

LNMD. 06-OCT-2023

Delete light FI  
(See Chart 1, P1) 49°10'17.3"N 053°31'49.5"W  
This notice affects Electronic Navigational Chart: CA576373  
(N2024059) LL(421) DFO(6311199-01)



**4862 - Carmanville to / à Bacalhoa Island and / et Fogo - New Chart - 26-DEC-2003 - NAD 1983**

16-AUG-2024

LN/M/D. 12-JAN-2024

Delete	black, yellow and black East cardinal lighted spar buoy Q(3)10s, marked DHG (See Chart 1, Q130.3)	49°30'35.6"N 054°26'44.6"W  (N2024025) LL(377.48) DFO(6311155-01)
Add	black, yellow and black East cardinal lighted pillar buoy Q(3)10s, marked DHG (See Chart 1, Q130.3)	49°30'34.8"N 054°26'38.8"W  (N2024025) LL(385.1) DFO(6311155-02)
Delete	yellow, black and yellow West cardinal lighted spar buoy Q(9)15s, marked DHV (See Chart 1, Q130.3)	49°31'19.0"N 054°26'41.8"W  (N2024026) LL(377.49) DFO(6311156-01)
Add	yellow, black and yellow West cardinal lighted pillar buoy Q(9)15s, marked DHV (See Chart 1, Q130.3)	49°31'18.0"N 054°26'40.8"W  (N2024026) LL(384.9) DFO(6311156-02)
Delete	legend Fog Sig 30s against light (See Chart 1, R1, R20)	49°41'12.8"N 054°33'24.6"W  (N2024060) LL(363) DFO(6311200-01)
Amend	FI 4s10m5M to read FI 5s10m5M against light (See Chart 1, P16)	49°26'55.9"N 054°13'41.6"W  (N2024111) LL(389) DFO(6311315-01)

**4881 - Gregory Island to Rocky Harbour - New Chart - 26-JUL-2019 - World Geodetic System 1984**

23-AUG-2024

LN/M/D. 24-MAY-2024

Amend	FI 6M to read FI 5s6M against light (See Chart 1, P16) This notice affects Electronic Navigational Chart: CA576710	49°30'41.6"N 057°52'33.2"W  (N2024133) LL(205) DFO(6311344-01)
-------	--	--

**4881 - Norris Point - New Chart - 26-JUL-2019 - World Geodetic System 1984**

23-AUG-2024

LN/M/D. 24-MAY-2024

Amend	FI W 14m 6M to read FI 5s14m6M against light (See Chart 1, P16) This notice affects Electronic Navigational Chart: CA576710	49°30'41.6"N 057°52'33.2"W  (N2024133) LL(205) DFO(6311344-01)
-------	---	--

**4911 - Entrée à / Entrance to Miramichi River - New Edition - 27-JAN-2006 - NAD 1983**

30-AUG-2024

LN/M/D. 12-APR-2024

Add	red starboard hand lighted conical buoy Q R, marked MH6.2 (See Chart 1, Qb)	47°10'04.9"N 065°01'55.9"W  (G2024158) LL(1236.1) DFO(6311363-01)
Delete	red starboard hand spar buoy, marked MH8 (See Chart 1, Qb)	47°11'04.0"N 065°01'48.4"W  (G2024159) DFO(6311364-01)
Add	red starboard hand conical buoy, marked MH8 (See Chart 1, Qb)	47°10'56.5"N 065°02'05.2"W  (G2024159) DFO(6311364-02)

Reposition	red starboard hand spar buoy, marked MH12 (See Chart 1, Qb)	from 47°11'56.4"N 065°02'12.5"W to 47°11'56.9"N 065°02'16.2"W (G2024168) DFO(6311391-01)
Reposition	red starboard hand conical buoy, marked MH4 (See Chart 1, Qb)	from 47°10'00.2"N 065°01'04.1"W to 47°09'58.7"N 065°01'03.9"W (G2024169) DFO(6311392-01)
Reposition	red starboard hand lighted spar buoy Q R, marked MH2 (See Chart 1, Qb)	from 47°10'38.8"N 065°00'19.7"W to 47°10'18.2"N 064°59'53.5"W DFO(6311395-02)
Reposition	green port hand lighted can buoy FI G, marked MH3 (See Chart 1, Qc)	from 47°09'56.2"N 065°01'03.1"W to 47°09'54.6"N 065°01'02.3"W (G2024173) LL(1236.5) DFO(6311396-01)

**4911 - Continuation A - New Edition - 27-JAN-2006 - NAD 1983**  
30-AUG-2024

LNMD. 12-APR-2024

Delete	red starboard hand spar buoy, marked MH8 (See Chart 1, Qb)	47°11'03.9"N 065°01'48.6"W (G2024159) DFO(6311364-01)
Add	red starboard hand conical buoy, marked MH8 (See Chart 1, Qb)	47°10'56.5"N 065°02'05.2"W (G2024159) DFO(6311364-02)
Reposition	red starboard hand spar buoy, marked MH12 (See Chart 1, Qb)	from 47°11'56.4"N 065°02'12.5"W to 47°11'56.9"N 065°02'16.2"W (G2024168) DFO(6311391-01)
Reposition	green port hand spar buoy, marked MH15 (See Chart 1, Qc)	from 47°12'19.6"N 065°02'51.4"W to 47°12'27.7"N 065°02'46.3"W (G2024171) DFO(6311394-01)
Delete	red starboard hand lighted spar buoy Q R, marked MH2 (See Chart 1, Qb)	47°10'38.8"N 065°00'19.7"W (G2024172) LL(1236.6) DFO(6311395-01)

**4913 - Caraquet Harbour, Baie de Shippegan and / et Miscou Harbour - New Chart - 07-AUG-1992 - NAD 1983**  
30-AUG-2024

LNMD. 09-FEB-2024

Delete	green port hand lighted spar buoy FI G, marked EA5 (See Chart 1, Qc)	47°54'19.5"N 064°37'58.6"W (G2024003) LL(1269.2) DFO(6311443-01)
Add	green port hand lighted can buoy FI G, marked EA3 (See Chart 1, Qc)	47°54'20.3"N 064°38'04.9"W (G2024234) LL(1268.1) DFO(6311443-02)
Add	red starboard hand lighted spar buoy FI R, marked EA4 (See Chart 1, Qb)	47°53'48.9"N 064°37'46.3"W (G2024235) LL(1268.2) DFO(6311444-01)
Add	green port hand lighted can buoy Q G, marked TK45 (See Chart 1, Qc)	47°53'07.6"N 064°34'16.4"W (G2024236) LL(1273.01) DFO(6311445-01)
Delete	green port hand lighted spar buoy QG, marked ED1 (See Chart 1, Qc)	47°53'21.0"N 064°34'14.3"W (G2024023) LL(1273.4) DFO(6311446-01)

Add red starboard hand lighted conical buoy Q R, marked TK46 47°53'21.2"N 064°34'14.6"W  
(See Chart 1, Qb)  
(G2024237) LL(1273.41) DFO(6311446-02)

**4937 - Pugwash Harbour - New Chart - 25-NOV-2022 - NAD 1983**  
30-AUG-2024

LNMD. 30-DEC-2022

Delete green port hand can buoy, marked UK15 45°51'50.5"N 063°40'25.8"W  
(See Chart 1, Qc)  
This notice affects Electronic Navigational Chart: CA576184  
(G2024063) DFO(6311190-01)

Add green port hand spar buoy, marked UK15 45°51'50.6"N 063°40'25.6"W  
(See Chart 1, Qb)  
This notice affects Electronic Navigational Chart: CA576184  
(G2024063) DFO(6311190-02)

**4938 - Pictou Harbour - New Chart - 25-JAN-2019 - World Geodetic System 1984**  
30-AUG-2024

LNMD. 27-OCT-2023

Reposition green port hand lighted spar buoy Q G, marked SJ15 from 45°40'38.6"N 062°40'59.9"W  
(See Chart 1, Qc) to 45°40'38.5"N 062°41'04.7"W  
This notice affects Electronic Navigational Chart: CA576246  
(G2024185) LL(905.3) DFO(6311408-01)

Reposition red starboard hand lighted spar buoy Q R, marked SJ12 from 45°40'49.4"N 062°41'28.1"W  
(See Chart 1, Qb) to 45°40'51.5"N 062°41'30.4"W  
This notice affects Electronic Navigational Chart: CA576246  
(G2024212) LL(905.2) DFO(6311456-01)

Reposition green port hand lighted spar buoy FI G, marked SJ11 from 45°40'55.8"N 062°40'34.2"W  
(See Chart 1, Qc) to 45°40'52.3"N 062°40'43.7"W  
This notice affects Electronic Navigational Chart: CA576246  
(G2024213) LL(905) DFO(6311457-01)

Reposition black, red and black isolated danger lighted spar buoy FI(2)5s, marked from 45°40'17.1"N 062°42'41.0"W  
SJD to 45°40'17.1"N 062°42'35.0"W  
(See Chart 1, Q130.4)  
This notice affects Electronic Navigational Chart: CA576246  
(G2024214) LL(905.55) DFO(6311458-01)

**4938 - Pictou Wharves - New Chart - 25-JAN-2019 - World Geodetic System 1984**  
30-AUG-2024

LNMD. 27-OCT-2023

Reposition black, red and black isolated danger lighted spar buoy FI(2)5s, marked from 45°40'17.1"N 062°42'41.0"W  
SJD to 45°40'17.1"N 062°42'35.0"W  
(See Chart 1, Q130.4)  
This notice affects Electronic Navigational Chart: CA576246  
(G2024214) LL(905.55) DFO(6311458-01)

**4940 - Approaches to Caribou and Pictou - New Chart - 24-SEP-2021 - NAD 1983**  
16-AUG-2024

LNMD. 27-OCT-2023

Amend FI(2) 18s13m9M to read FI 5s11m9M against light 45°45'52.2"N 062°40'50.4"W  
(See Chart 1, P16)  
This notice affects Electronic Navigational Chart: CA376691, CA476610, CA576611  
(G2024125) LL(918) DFO(6311286-01)

**4940 - Caribou Harbour - New Chart - 24-SEP-2021 - NAD 1983**

16-AUG-2024

LNMD. 27-OCT-2023

Amend FI(2) 18s13m9M to read FI 5s11m9M against light 45°45'52.2"N 062°40'50.4"W  
(See Chart 1, P16)  
This notice affects Electronic Navigational Chart: CA376691, CA476610, CA576611  
(G2024125) LL(918) DFO(6311286-01)

**5033 - Northern Entrance to / à Caplin Bay - New Chart - 09-MAY-2003 - NAD 1983**

30-AUG-2024

LNMD. 19-APR-2024

Delete red starboard hand lighted pillar buoy FI R, marked NK2 53°07'01.6"N 055°46'33.8"W  
(See Chart 1, Qb)  
(N2024139) LL(280.015) DFO(6311374-01)

Add yellow, black and yellow West cardinal lighted pillar buoy Q(9)15s, 53°07'01.6"N 055°46'33.8"W  
marked NKK  
(See Chart 1, Q130.3)  
(N2024139) LL(280.015) DFO(6311374-02)

**6243 - Winnipeg River/Rivière Winnipeg and Approaches/et les Approches - Sheet/Feuille 1 - New Edition - 08-JUL-2005 - NAD 1983**

09-AUG-2024

Reposition green port hand spar buoy, marked T11 from 50°37'23.0"N 096°17'56.0"W  
(See Chart 1, Qc) to 50°37'26.2"N 096°18'45.8"W  
(P2024054) DFO(6605324-01)

**7568 - Lancaster Sound and/et Admiralty Inlet - New Chart - 05-JUL-1985 - Unknown**

23-AUG-2024

LNMD. 27-SEP-2019

Add obstruction with known depth of 1.1 metres 74°29'05.8"N 087°00'58.4"W  
(See Chart 1, K41)  
This notice affects Electronic Navigational Chart: CA273259  
DFO(6605321-01)

**7621 - Amundsen Gulf - New Edition - 25-FEB-2022 - NAD 1983**

30-AUG-2024

LNMD. 22-MAR-2024

Delete depth of 8.5 metres 70°08'44.0"N 124°45'28.6"W  
(See Chart 1, I10)  
DFO(6605326-01)

Add depth of 3.8 metres, Rep (2024) 70°08'43.0"N 124°45'42.9"W  
(See Chart 1, I10)  
DFO(6605326-02)

Delete depth of 5.2 metres 69°47'10.9"N 123°57'27.5"W  
(See Chart 1, I10)  
DFO(6605326-03)

Add depth of 2.5 metres, Rep (2024) 69°47'05.4"N 123°57'26.1"W  
(See Chart 1, I10)  
DFO(6605326-04)

Add depth of 2.3 metres, Rep (2024) 69°45'21.4"N 124°00'09.2"W  
(See Chart 1, I10)  
DFO(6605326-05)

Add depth of 2.8 metres, Rep (2024) 69°41'55.2"N 123°51'39.0"W  
(See Chart 1, I10)  
DFO(6605326-06)

**7664 - Liverpool Bay - New Chart - 28-FEB-1986 - NAD 1927**

09-AUG-2024

LN/D. 07-JUN-2024

Affix patch 70°34'05.2"N 128°03'48.9"W  
Download Patch - [https://www.notmar.gc.ca/chsftp/patches/7664\\_6605325\\_1\\_202407111301.pdf](https://www.notmar.gc.ca/chsftp/patches/7664_6605325_1_202407111301.pdf)  
DFO(6605325-01)

**7665 - Franklin Bay and/et Darnley Bay - New Chart - 13-JUN-1986 - NAD 1927**

30-AUG-2024

LN/D. 22-MAR-2024

Delete depth of 8.5 metres 70°08'41.7"N 124°45'41.1"W  
(See Chart 1, I10)  
DFO(6605326-01)

Add depth of 3.8 metres, Rep (2024) 70°08'42.2"N 124°45'33.8"W  
(See Chart 1, I10)  
DFO(6605326-02)

Delete depth of 5.2 metres 69°47'12.4"N 123°57'27.1"W  
(See Chart 1, I10)  
DFO(6605326-03)

Add depth of 2.5 metres, Rep (2024) 69°47'04.6"N 123°57'17.0"W  
(See Chart 1, I10)  
DFO(6605326-04)

Add depth of 2.3 metres, Rep (2024) 69°45'20.6"N 124°00'00.1"W  
(See Chart 1, I10)  
DFO(6605326-05)

Add depth of 2.8 metres, Rep (2024) 69°41'54.4"N 123°51'29.9"W  
(See Chart 1, I10)  
DFO(6605326-06)

**7686 - Police Point And Approaches/ Et Les Approches - New Chart - 27-MAR-1981 - NAD 1927**

30-AUG-2024

LN/D. 21-MAY-2010

Delete depth of 8.5 metres 70°08'43.0"N 124°45'51.1"W  
(See Chart 1, I10)  
DFO(6605326-01)

Add depth of 3.8 metres, Rep (2024) 70°08'43.0"N 124°45'42.9"W  
(See Chart 1, I10)  
DFO(6605326-02)

**8049 - St. Michael Bay to/aux Gray Islands - New Edition - 07-MAR-2003 - Unknown**

23-AUG-2024

LN/D. 19-APR-2024

Amend FI3s59m5M to read FI 5s59m5M against light 50°51'51.1"N 055°55'16.1"W  
(See Chart 1, P16)  
(N2024128) LL(248) DFO(6311339-01)

Amend FI to read LFI 10s12m8M against light 50°42'20.0"N 055°38'42.2"W  
(See Chart 1, P16)  
(N2024129) LL(249) DFO(6311340-01)

## Section 3: Radio Aids to Marine Navigation Corrections

**\*818/24 Radio Aids to Marine Navigation 2024 (Atlantic, St. Lawrence, Great Lakes, Lake Winnipeg, Arctic and Pacific)**

**Page 5-48**

**DELETE AS FOLLOWS:**

### 5.14.4 Marine Forecast Areas

**Table 5-63 - Pacific Coast: Marine Weather Observations**

Area Name	Area Name	Area Name	Area Name
Addenbroke Island - L	Egg Island - L	Middle Nomad - B	Sentry Shoal - B
Ballenas Island - A	Entrance Island - A, L	Nanakwa Shoal - B	Sheringham Point - A
Bella Bella - A	Esquimalt Harbour - A	Nootka - L	Sisters Island - A
Boat Bluff - L	Estevan Point - A, L	North Hecate Strait - B	Smith Island (USA)* - B
Bonilla Island - A, L	Fanny Island - A	North Nomad - B	Solander Island - A
Cape Beale - L	Green Island - L	Pachena Point - L	South Brooks - B
Cape Flattery (USA)* - B	Grey Islet - A	Pam Rocks - A	South Hecate Strait - B
Cape Mudge - L	Grief Point - A	Pine Island - L	South Moresby - B
Cape Scott - L	Halibut Bank - B	Point Atkinson - A	South Nomad - B
Cape St James - A	Herbert Island - A	Point Wilson (USA)* - L	Trial Island - L
Carmanah Point - L	Holland Rock - A	Port Angeles (USA)* - L	Triple Island - L
Cathedral Point - A	Ivory Island - L	Prince Rupert - A	<del>Tsawwassen - L</del>
Central Dixon Entrance - B	Kelp Reef - A	Pulteney Point - L	Tsawwassen Ferry - A
Chatham Point - L	Kindakun Rocks - A	Quatsino - L	Victoria/Gonzales Pt - A
Chrome Island - L	La Perouse - B	Race Rocks - A	Victoria Harbour - A
Cumshewa Island - A	Langara Island - A, L	Rose Spit - A	West Dixon Entrance - B
Discovery Island - A	Lennard Island - L	Sandheads - A	West Moresby - B
Dryad Point - L	Lucy Island - A	Sartine Island - A	West Sea Otter - B
East Dellwood - B	McInnes Island - L	Saturna Island - A	-
East Point - A	Merry Island - L	Scarlett Point - L	-

## Section 4: Canadian Sailing Directions Corrections

---

The following **Canadian Sailing Directions** volumes have recently been updated on the [Canadian Hydrographic Service website](#).

No.	Title
<b>Atlantic Coast</b>	
<b>ATL 104</b>	Cape North to Cape Canso (including Bras d'Or Lake)
<b>ATL 106</b>	Gulf of Maine and Bay of Fundy
<b>ATL 108</b>	Gulf of St. Lawrence (Southwest Portion)

Each volume includes a section entitled “Record of Changes” which lists all updates that are incorporated during the current calendar year.

## Section 5: List of Lights, Buoys and Fog Signals Corrections

The amendments are highlighted and deletions are crossed out. For general and region-specific information on the List of Lights, click on the following links: [Newfoundland and Labrador Coast](#), [Atlantic Coast](#), [Inland Waters](#) and [Pacific Coast](#).

No.	Name	Position ----- Latitude N. Longitude W.	Light Characteristics	Focal Height in m. above water	Nomi- nal Range	Description ----- Height in meters above ground	Remarks ----- Fog Signals
-----	------	--	--------------------------	--	-----------------------	--	---------------------------------

### NEWFOUNDLAND AND LABRADOR COAST

#### TRINITY BAY (LL 450.1 – 471.51)

462.51 <del>463.51</del>	Pinchgut Island Light	48 22 58.4 053 17 45.1	Fl G 5s	.....	4	Mast.	Flash 1 s; eclipse 4 s. Operates 24 h. Seasonal.	Chart:4853 Edn 08/24
-----------------------------	--------------------------	---------------------------	---------	-------	---	-------	--	-------------------------

### ATLANTIC COAST

#### CAPE BRETON ISLAND, N.S. (LL 704.85 – 882.5)

777.02	Allen Point light buoy SA8	46 11 26.2 060 15 49.2	Fl R 4s	.....	.....	Red spar, marked "SA8".	Seasonal.	Chart:4266 Edn 08/24 (G24-199)
874.52	Mabou Harbour light buoy VJ1	46 05 25.0 061 28 53.7	Fl G 4s	.....	.....	Green, marked "VJ1".	Seasonal.	Chart:4448 Edn 08/24 (G24-210)
874.53	Mabou Harbour light buoy VJ2	46 05 23.0 061 28 55.4	Fl R 4s	.....	.....	Red, marked "VJ2".	Seasonal.	Chart:4448 Edn 08/24 (G24-209)
874.55	Mabou Harbour light buoy VJ3	46 05 18.2 061 28 33.7	Fl G 4s	.....	.....	Green spar, marked "VJ3".	Seasonal.	Chart:4448 Edn 08/24 (G24-208)

#### NORTHUMBERLAND STRAIT – EAST (LL 883.2 – 940.3)

905	Pictou Harbour light buoy SJ11	45 40 52.3 062 40 43.7	Fl G 4s	.....	.....	Green spar, marked "SJ11".	Seasonal.	Chart:4938 Edn 08/24 (G24-213)
905.2	Pictou Harbour light buoy SJ12	45 40 51.5 062 41 30.4	Q R 1s	.....	.....	Red spar, marked "SJ12".	Seasonal.	Chart:4938 Edn 08/24 (G24-212)
905.55	Hector Quay light buoy SJD	45 40 17.1 062 42 35.0	Fl(2) W 5s	.....	.....	Black, red and black spar, marked "SJD".	Seasonal.	Chart:4938 Edn 08/24 (G24-214)



Notices to Mariners – Monthly Eastern Edition  
Section 5: List of Lights, Buoys and Fog Signals Corrections

No.	Name	Position ----- Latitude N. Longitude W.	Light Characteristics	Focal Height in m. above water	Nomi- nal Range	Description ----- Height in meters above ground	Remarks ----- Fog Signals
-----	------	--	--------------------------	--	-----------------------	--	---------------------------------

**NORTHUMBERLAND STRAIT – WEST (LL 1085 – 1165.9)**

1157	Kouchibouguac Gully light buoy XY2	46 49 55.6 064 53 47.5	Fl R 4s	.....	.....	Red spar, marked "XY2".	Buoy may be repositioned due to shifting channel. Seasonal.  Chart:4906 Edn 08/24 (G24-217)
1157.33	Kouchibouguac light buoy XY4	46 49 53.4 064 54 00.2	Fl R 4s	.....	.....	Red, marked "XY4".	Buoy may be repositioned due to shifting channel. Seasonal.  Chart:4906 Edn 08/24 (G24-215)
1158.5	Kouchibouguac Gully light buoy XY9	46 49 50.3 064 54 04.1	Fl G 4s	.....	.....	Green, marked "XY9".	Buoy may be repositioned due to shifting channel. Seasonal.  Chart:4906 Edn 08/24 (G24-222)

**GASPÉ – CHALEUR BAY (LL 1169.1 – 1426)**

1262.751	Miscou Harbour light buoy TK16	47 53 03.8 064 30 30.7	Fl R 4s	.....	.....	Red, marked "TK16".	Operates 24 h. Seasonal.  Chart:4913 Edn 08/24 (G24-238)
1268.1	Miscou Channel light buoy EA3	47 54 20.3 064 38 04.9	Fl G 4s	.....	.....	Green, marked "EA3".	Operates 24 h. Seasonal.  Chart:4913 Edn 08/24 (G24-234, 312)
1268.2	Miscou Channel light buoy EA4	47 53 48.9 064 37 46.3	Fl R 4s	.....	.....	Red spar, marked "EA4".	Operates 24 h. Seasonal.  Chart:4913 Edn 08/24 (G24-235)
1272.141	Miscou Harbour light buoy TK17	47 53 03.7 064 30 32.6	Fl G 4s	.....	.....	Green, marked "TK17".	Operates 24 h. Seasonal.  Chart:4913 Edn 08/24 (G24-239)
1273.01	Miscou Channel light buoy TK45	47 53 07.6 064 34 16.4	Q G 1s	.....	.....	Green, marked "TK45".	Operates 24 h. Seasonal.  Chart:4913 Edn 08/24 (G24-236)
1273.41	Miscou Harbour light buoy TK46	47 53 21.2 064 34 14.6	Q R 1s	.....	.....	Red, marked "TK46".	Operates 24 h. Seasonal.  Chart:4913 Edn 08/24 (G24-237)

**ST. LAWRENCE ESTUARY, GULF OF ST. LAWRENCE – RIVIÈRE DU LOUP (LL 1620 – 1772)**

1754.4	Anse aux Basques Wharf Sector Light	48 19 04.9 069 24 56.2	F R W G	.....	7.4	10	Square skeleton tower, red and white rectangular daymark.  Red from 94.04° to 101.04°; white from 101.04° to 122.04°; green from 122.04° to 129.04°. Operates 24 h. Year round.  Chart:1320 Edn 08/24 (Q24-195)
--------	--	---------------------------	------------------	-------	-----	----	--

Notices to Mariners – Monthly Eastern Edition  
Section 5: List of Lights, Buoys and Fog Signals Corrections

No.	Name	Position ----- Latitude N. Longitude W.	Light Characteristics	Focal Height in m. above water	Nomi- nal Range	Description ----- Height in meters above ground	Remarks ----- Fog Signals
<b>SAGUENAY RIVER (LL 1773 – 1823.4)</b>							
1799.11	Powell Docking Basin #2 range	48 19 57.8 070 52 25.7	Iso Y 1s	.....	.....	Mast, yellow daymark with black vertical stripe.	Private aid. Flash 0.5 s; eclipse 0.5 s. Visible 8°. Operates 24 h. Year round.
1799.12		083°47' 59 m from front.	Iso Y 1s	.....	.....	Mast, yellow daymark with black vertical stripe.	Private aid. Flash 0.5 s; eclipse 0.5 s. Visible 8°. Operates 24 h. Year round.  <b>Chart:1202</b> <b>Edn 08/24 (Q24-193)</b>
1799.13	Powell Docking Basin #2 range	48 19 59.3 070 52 25.3	F B	.....	.....	Mast, yellow daymark with black vertical stripe.	Private aid. Visible 8°. Operates 24 h. Year round.
1799.14		084°39' 89 m from front.	F B	.....	.....	Mast, yellow daymark with black vertical stripe.	Private aid. Visible 8°. Operates 24 h. Year round.  <b>Chart:1202</b> <b>Edn 08/24 (Q24-194)</b>

**INLAND WATERS**

**LAKE NIPISSING (LL 1420 – 1441.4)**

1424	South East Bay sector						<b>Delete from list.</b>  <b>Chart:6035</b> <b>Edn 08/24 (D24-084)</b>
------	--------------------------	--	--	--	--	--	---