



Canadian
Coast Guard

Garde côtière
canadienne

Notices to Mariners

Edition No. 05/2026
May 29, 2026



Safety First, Service Always

Monthly Eastern Edition

Canada 

Notices to Mariners – Monthly Eastern Edition
Edition No. 05/2026

Aussi disponible en français :
Avis aux navigateurs – Édition mensuelle de l'Est
Édition n° 05/2026

Published under the Authority of:

Canadian Coast Guard Programs
Aids to Navigation and Waterways
Montreal, QC H2Y 2E7

For more information, contact DFO.Notmar-Notmar.MPO@dfo-mpo.gc.ca.

© His Majesty the King in Right of Canada,
as represented by the Canadian Coast Guard, 2026.

Cat. No. D16-2E-PDF (Electronic PDF, English)
ISSN 2817-0075

Cat. No. D16-2F-PDF (Electronic PDF, French)
ISSN 2817-0083

A web version is available here:

[Notices to Mariners – Monthly Editions](#) (English)

[Avis aux navigateurs – Publications mensuelles](#) (French)

Explanatory Notes – Notices to Mariners (NOTMAR)

Geographical positions refer directly to the graduations of the largest scale Canadian Hydrographic Service chart (unless otherwise indicated).

Bearings refer to the true compass and are measured clockwise from 000° (North) clockwise to 359°; those relating to lights are from seaward.

Visibility of lights is that in clear weather.

Depths - The units used for soundings (metres, fathoms or feet) are stated in the title of each chart.

Elevations are normally given above Higher High Water, Large Tide (unless otherwise indicated).

Distances may be calculated as follows:

- 1 nautical mile = 1,852 metres (6,076.1 feet)
- 1 statute mile = 1,609.3 metres (5,280 feet)
- 1 metre = 3.28 feet

Temporary and Preliminary Notices to Mariners – Section 1A of *Notices to Mariners*

These notices are indicated by a (T) or a (P), respectively. Please note that nautical charts are not amended by the Canadian Hydrographic Service for temporary (T) and preliminary (P) notices. It is recommended that mariners chart these corrections in pencil. For the list of charts affected by (T) & (P) notices, please refer to the current [Notices to Mariners - Monthly Summary of Temporary and Preliminary Notices](#) publication.

Suggestions and Corrections Form

This form is specifically for suggestions and corrections to Notices to Mariners publications. It is available [online](#) and also in [fillable PDF format](#) included with the monthly publication ZIP file.

To submit comments and suggestions on possible improvements to the various publications and services: DFO.Notmar-Notmar.MPO@dfo-mpo.gc.ca.

To report chart discrepancies and/or corrections to the *Canadian Sailing Directions* booklets: Fill out the [Marine Information Reporting Form](#) and/or email chsinfo@dfo-mpo.gc.ca.

To report emergencies or navigational hazards: [Contact your nearest MCTS centre](#)

- VHF channel 16 (156.8 MHz)
- MF/HF frequency 2182 kHz/4125 kHz (where available)
- *16 on a cellphone (where available)

NOTMAR Website – Monthly Editions, Chart Corrections and Chart Patches

The NOTMAR website allows users to access the [monthly publications](#), [chart corrections](#), and [chart patches](#).

Users can subscribe for free to the [email notification service](#) to receive notifications when charts of interest are updated, including their patches, as well as when a new Monthly Edition of *Notices to Mariners* is published.

In addition, the monthly publication and related files to download, such as chart patches, can be obtained all together through the download of a single ZIP file.

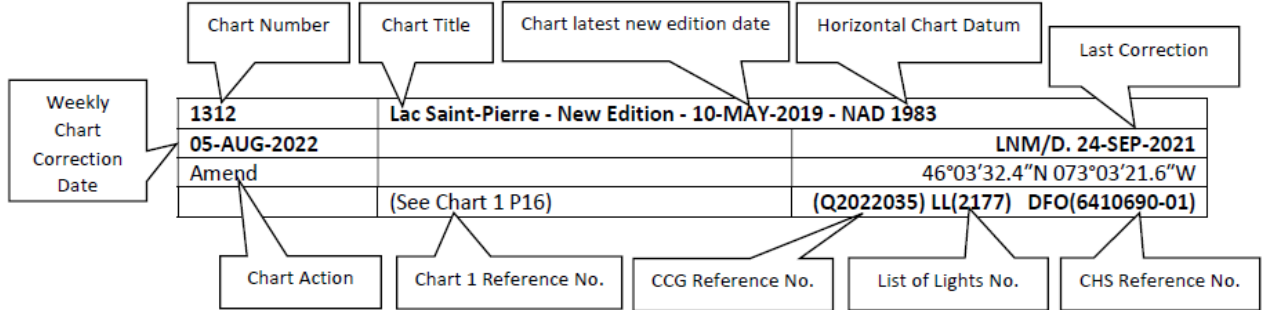
Explanatory Notes – Canadian Hydrographic Service (CHS)

Chart Corrections – Section 2 of *Notices to Mariners*

Corrections to nautical charts will be listed in numerical order by chart number. Each chart correction listed applies only to that particular chart. Related charts, if any, will have their own specific correction listed separately.

Users should also refer to CHS *Chart 1: Symbols, Abbreviations and Terms* for additional information pertaining to the correction of charts.

The illustration below describes the elements that will comprise a typical Section 2 chart correction:



The last correction number is identified with the **LN/D** or **Last Notice to Mariners Number / Date**.

Mariners are advised that only the most critical changes that directly affect safety to navigation are issued in “Section 2 – Chart Corrections.” This limitation is required to ensure that charts remain as clear and easy to read as possible. As a result, mariners may see minor discrepancies of a non-critical nature between information in official publications. For example, a small change in the nominal range or focal height of a light may not result in the production of a chart correction in Notices to Mariners, but may result in a correction in the [List of Lights, Buoys and Fog Signals](#) publication.

Note: In the case of a discrepancy between information provided on CHS charts relating to aids to navigation, and the *List of Lights, Buoys and Fog Signals* publication, the latter shall be deemed as containing the most up-to-date information.

Explanatory Notes – Marine Communications and Traffic Services (MCTS)

Navigational Warnings / Notices to Shipping

The Canadian Coast Guard (CCG) is implementing a number of changes to the aids to navigation system in Canada.

These changes are advertised as Navigational Warnings, formerly called Notices to Shipping¹, that are broadcast by the CCG, and are then followed up with Notices to Mariners, then charts are updated by hand correction, reprints or new editions.

Mariners are advised that all relevant Navigational Warnings (NAVWARN) should be kept until superseded by Notices to Mariners or through revised charts issued by the Canadian Hydrographic Service (CHS).

NAVWARN are accessible on the applicable regional page on the [CCG Navigational Warnings](#).

CHS is reviewing the impact of these changes with CCG and together are preparing an action plan on the issuing of chart revisions.

For further information, contact your regional NAVWARN Issuing Desk.

<p>Atlantic Region (North) *Port aux Basques MCTS Centre</p> <p>“N” Series NAVWARN</p> <p>Canadian Coast Guard 49 Stadium Rd. P.O. Box 99 Port aux Basques, NL A0M 1C0</p> <p>Telephone: 709-695-2168 or 1-800-563-9089 Facsimile: 709-695-7784</p> <p>Email: NAVWARN.MCTSPortAuxBasques@innav.gc.ca</p>	<p>Central Region *Prescott MCTS Centre</p> <p>“C” Series NAVWARN</p> <p>Canadian Coast Guard 401 King Street West P.O. Box 1000 Prescott, ON K0E 1T0</p> <p>Telephone: 613-925-0666 Facsimile: 613-925-4519</p> <p>Email: NAVWARN.MCTSPrescott@innav.gc.ca</p>
<p>Atlantic Region (South) *Sydney MCTS Centre</p> <p>“M” Series NAVWARN</p> <p>Canadian Coast Guard 1190 Westmount Road Sydney, NS B1R 2J6</p> <p>Telephone: 902-564-7751 or 1-800-686-8676 Facsimile: 902-564-7662</p> <p>Email: NAVWARN.MCTSSydney@innav.gc.ca</p>	<p>Arctic Region *Iqaluit MCTS Centre</p> <p><i>Operational from approximately mid-May until late December.</i></p> <p>“A” Series NAVWARN</p> <p>Canadian Coast Guard P.O. Box 189 Iqaluit, NU X0A 0H0</p> <p>Telephone: 867-979-5269 Facsimile: 867-979-4264</p> <p>Email: NAVWARN.MCTSIqaluit@innav.gc.ca</p>

*Service available in English and in French.

¹ The expression “Notice to Shipping” was changed to “Navigational Warning” in January 2019.

Table of Contents

Section 1: General and Safety Information		1
*505/23	Canadian Hydrographic Service – Magnetic Declination Calculations	1
*1207/23	Canadian Hydrographic Service – Inappropriate Geographical Names Review Process.....	1
*401/26	Protecting the North Atlantic Right Whale: Speed Restriction Measures in the Gulf of St. Lawrence	1
*406/26	Saguenay–St. Lawrence Marine Park - Beluga Whale Protection: Slowdown Area at the Mouth of the Saguenay Fjord and Area Closure at Baie Sainte-Marguerite	11
*407/26	Saguenay–St. Lawrence Marine Park and Surrounding Waters – Whale Protection	13
*501/26	Canadian Hydrographic Service – Nautical Charts.....	15
*502/26	Canadian Hydrographic Service – Electronic Navigational Charts.....	15
*503/26	Canadian Hydrographic Service – Raster Digital Charts (BSB V3).....	17
*504/26	Transport Canada - Ship Safety Bulletin #05/2026.....	17
*506/26	Canadian Coast Guard Publication - Amendments to the <i>Notices to Mariners Annual Edition 2026</i> - Section A2, Notice 5: General Guidelines for Aquatic Species at Risk and Important Marine Mammal Areas	18
*507/26	Canadian Coast Guard Publication - Amendments to the <i>Notices to Mariners Annual Edition 2026</i> - Section A2, Notice 5A: General Requirements for Oceans Act Marine Protected Areas and Fisheries Act Marine Refuges	18
*508/26	Sorel-Tracy à/to Otterburn-Park – Private Buoys Repositioned	21
*509/26	Belleville Harbour – Unlit Buoys Permanently Changed.....	21
Section 1A: Temporary and Preliminary Notices		22
Reminder – Comment Period for Active Preliminary Notices		22
*510(T)/26	Batiscan au/to Lac Saint-Pierre – Works: Construction Operations.....	22
*511(T)/26	Charlottetown Harbour – Marine Works	22
*512/26	Batiscan au/to Lac Saint-Pierre – Diving Operations Completed	22
*513/26	St. Marys Bay – Wreck Charted.....	22
*514(T)/26	Lake Superior – Waterway Information: Shallow Depth Reported.....	23
*515/26	Port of Thunder Bay – Obstruction Charted.....	23
*516(P)/26	Coronation Gulf Western Portion/Partie Ouest – Daybeacon to be Discontinued.....	24
*517(P)/26	Coronation Gulf Eastern Portion/Partie Est – Daybeacons to be Discontinued.....	24
Section 2: Chart Corrections		25
Section 3: Radio Aids to Marine Navigation Corrections		31
*519/26	Radio Aids to Marine Navigation 2026 (Atlantic, St. Lawrence, Great Lakes, Lake Winnipeg, Arctic and Pacific).....	31

Section 4: Canadian Sailing Directions Corrections	36
---	-----------

Section 5: List of Lights, Buoys and Fog Signals Corrections	37
---	-----------

Numerical Index of Canadian Charts Affected

This numerical index lists all nautical charts mentioned in this monthly edition of Notices to Mariners. Only charts appearing in Section 2 of this publication require a chart correction. The appearance of charts in all other sections, particularly those related to the correction of other nautical publications, is included here for reference.

Chart No.	Pages	Chart No.	Pages	Chart No.	Pages
1236	25, 26				
1312	26				
1313	22				
1315	26				
1316	26				
1317	26				
1350	21				
1431	27				
1434	27				
1550	27				
2011	21				
2016	27				
2314	23				
3012	15				
4011	27				
4012	27				
4115	27, 28				
4118	22, 28				
4203	28				
4235	28				
4460	22				
4491	28				
4679	28, 29				
4680	29				
4830	29				
4957	29				
4958	29				
4969	30				
7777	24				
7778	24				

Section 1: General and Safety Information

***505/23 Canadian Hydrographic Service – Magnetic Declination Calculations**

(Recurrent publication of notice *505/23, originally published in the *Notices to Mariners – Monthly Eastern Edition 05/2023* publication.)

Mariners are advised that CHS has adopted the harmonized World Magnetic Model (WMM), as found on the NCEI/NOAA website. Old compass rose declination information on CHS navigational products can be updated using this website: <https://www.ngdc.noaa.gov/geomag/calculators/magcalc.shtml#declination>. While the differences in the model declinations are small each year, they can become more significant over a large period of time.

***1207/23 Canadian Hydrographic Service – Inappropriate Geographical Names Review Process**

(Recurrent publication of notice *1207/23, originally published in the *Notices to Mariners – Monthly Eastern Edition 12/2023* publication.)

The records of the Canadian Hydrographic Service could contain geographical names that may be considered inappropriate, offensive and derogatory. Geographical naming authorities are in the process of addressing many offensive place names, the review process is underway. For more information, about inappropriate geographical names, please see the [following announcement](#).

***401/26 Protecting the North Atlantic Right Whale: Speed Restriction Measures in the Gulf of St. Lawrence**

(Recurrent publication of notice *401/26, originally published in the *Notices to Mariners – Monthly Eastern Edition 04/2026* publication.)

Purpose

This notice describes the speed and navigational restriction zones that vessels must follow in the Gulf of St. Lawrence.

The Government of Canada has established these zones to reduce the risk of vessels colliding with North Atlantic right whales (NARW).

Background

Due to changing migration patterns of NARW and their increased presence in the Gulf of St. Lawrence, the Government of Canada has set seasonal speed restrictions in specific zones. These speed restriction zones are defined as “static zones”, “dynamic shipping zones”, “seasonal management areas”, a “voluntary seasonal slowdown zone” and a “restricted area”. [See the map below for details](#).

Note: Vessels **must follow** Navigational Warnings outlining the speed restrictions. The *Interim Order for the Protection of North Atlantic Right Whales (Eubalaena Glacialis) in the Gulf of St. Lawrence, 2026*, enables the issuance of Navigational Warnings (NAVWARNs) imposing speed restrictions and navigation restrictions.

Speed restriction zones are described in monthly Notices to Mariners (NOTMARs), which are published by the Canadian Coast Guard. The status of these zones is broadcast through NAVWARNs, which are published by the Coast Guard’s Marine Communications and Traffic Services Centres.

Speed restriction zones and measures

The speed restriction zones will be effective from April 22, 2026, while the restricted area will be implemented based on whale presence.

Please check the [latest NAVWARN](#) for all speed restrictions currently in effect.

Speed Restriction Measures for 2026

These restrictions are in effect from **April 22 to November 15, 2026**.

Non-application

The measures described in this bulletin do not apply to:

- a) a vessel in distress or providing assistance to a person or a vessel in distress;
- b) a government vessel being used
 - (i) for law enforcement activities;
 - (ii) for search and rescue operations; or
 - (iii) to ensure the competency of the crew or the operational readiness of the vessel or crew with respect to such activities or operations.

Static zones

In the static zones, **all** vessels above **13.0 m** in length overall (LOA) must proceed at a speed of not more than 10.0 knots over the ground.

Exclusions

Air cushion vessels operated by or on behalf of the Government of Canada that are engaged in ice-clearing activities from April to June in and around Chaleur Bay are exempted when in operation.

36.57 m (20-fathoms) shallow water protocol exclusion

Vessels engaged in any commercial fishing activity may proceed at a safe operational speed in waters not more than 36.57 m (20 fathom) deep within the static zones.

If a NAVWARN states that at least one North Atlantic right whale has been detected in waters within a static zone or its buffer zone that are not more than 36.57 m deep, the speed limit of 10.0 knots over the ground will apply in the concerned zone(s) to all vessels engaged in commercial fishing activities above 13.0 m in length overall (LOA). The speed restriction will be in effect for 15 days after the day on which the whale was detected. In the event of a new North Atlantic right whale detection occurring in the last 7 days of the 15-day slowdown period, the speed restriction will be extended for an additional 15 days from the date of the new detection. This would continue until no North Atlantic right whales are detected. The buffer zones associated with the static zones are located 5 nautical miles north and south of their adjacent border in waters less than 36.57 m deep.

Coordinates for the northern static zone:

- 50° 20' N 065° 00' W
- 49° 13' N 065° 00' W
- 48° 40' N 064° 13' W
- 48° 40' N 062° 40' W
- 48° 03' N 061° 07.5' W
- 47° 58.1' N 061° 03.5' W
- 48° 00' N 061° 00' W
- 49° 04' N 061° 00' W
- 49° 04' N 062° 00' W
- 49° 43' N 063° 00' W
- 50° 20' N 063° 00' W

Coordinates for the southern static zone:

- 48° 40' N 065° 00' W
- 48° 40' N 062° 40' W
- 48° 03' N 061° 07.5' W
- 47° 58.1' N 061° 03.5' W
- 47° 10' N 062° 30' W
- 47° 10' N 065° 00' W

Dynamic shipping zones

There are five dynamic shipping zones (DSZ) located in the Traffic Separation Scheme (TSS) north and south of Anticosti Island: A, B, C, D and E.

Speed restrictions in the dynamic shipping zones

When a North Atlantic right whale is detected in a dynamic shipping zone or in the buffer zones, located 5 nautical miles south or 2.5 nautical miles from the eastern and western edges of the dynamic shipping zones:

- All vessels will be notified via a NAVWARN; and
- Vessels above **13.0 m** in length overall (LOA) must proceed at a speed of not more than 10.0 knots over the ground within that zone.

When a NAVWARN is issued implementing a speed restriction in one or more dynamic shipping zone(s), vessels above **13.0 m** in length (LOA) must not exceed a speed of 10.0 knots over the ground. Even though dynamic shipping zones overlap with static zones, vessels can travel at a safe operational speed in dynamic shipping zones when they are not under speed restriction. Mariners are encouraged to take into consideration the potential for their vessel striking North Atlantic right whales when considering a safe operational speed during navigation.

The speed restriction in the dynamic shipping zone(s) will be in effect for 15 days from the date of detection. In the event of a new North Atlantic right whale detection occurring in the last 7 days of the 15-day slowdown period, the speed restriction will be extended for an additional 15 days from the date of the new detection. This would continue until no NARW are detected. **When a speed restriction is extended due to a new North Atlantic right whale detection, it should be noted that, contrary to previous years' operations, no new NAVWARN will be issued. The initial NAVWARN will remain in place until a NAVWARN lifting the speed restriction is published.**

Coordinates for the dynamic shipping zones:

Zone A

- 49° 41' N, 065° 00' W
- 49° 20' N, 065° 00' W
- 49° 11' N, 064° 00' W
- 49° 22' N, 064° 00' W

Zone B

- 49° 22' N, 064° 00' W
- 49° 11' N, 064° 00' W
- 48° 48' N, 063° 00' W
- 49° 00' N, 063° 00' W

Zone C

- 49° 00' N, 063° 00' W
- 48° 48' N, 063° 00' W
- 48° 24' N, 062° 00' W
- 48° 35' N, 062° 00' W

Zone D

- 50° 16' N, 064° 00' W
- 50° 00' N, 064° 00' W
- 49° 56' N, 063° 00' W
- 50° 16' N, 063° 00' W;
and
- from there along the
coastline back to
50° 16' N, 064° 00' W

Zone E

- 48° 35' N 062° 00' W
- 48° 24' N 062° 00' W
- 48° 03' N 061° 07.5' W
- 47° 58.1' N 061° 03.5' W
- 48° 00' N 061° 00' W
- 48° 10.5' N 061° 00' W

Seasonal management areas

Seasonal management area 1 (SMA-1) and seasonal management area 2 (SMA-2) are speed restriction areas located north and south of dynamic shipping zone E, respectively.

Within seasonal management areas, vessels above **13.0 m** in length (LOA):

- Must restrict their speed so as not to exceed 10.0 knots over the ground from April 22 to June 30, 2026; **and**
- Are allowed to proceed at a safe operational speed from July 1 to November 15, 2026, unless a North Atlantic right whale is detected. If a whale is detected, a speed restriction of 10.0 knots over the ground will be triggered for 15 days from the date of detection. In the event of a new North Atlantic right whale detection occurring in the last 7 days of the 15-day slowdown period, the speed restriction will be extended for an additional 15 days from the date of the new detection. This would continue until no North Atlantic right whales are detected.

Coordinates for the SMA-1:

- 49° 04' N 062° 00' W
- 49° 04' N 061° 00' W
- 48° 10.5' N 061° 00' W
- 48° 35' N 062° 00' W

Coordinates for the SMA-2:

- 48° 24' N 062° 00' W
- 48° 03' N 061° 07.5' W
- 47° 58.1' N 061° 03.5' W
- 47° 26.69' N 062° 00' W

Restricted area

In the summer months, an important proportion of the total North Atlantic right whale population gathers for feeding and surface activity near the [Shediac Valley](#). Since this makes the North Atlantic right whale more susceptible to vessel collisions, a mandatory restricted area will be implemented in and near the Shediac Valley and will come into force once 80% of the restricted area is closed to fishing for the season as per the Department of Fisheries and Oceans' (DFO) right whale closure protocol, or at the latest on June 15, 2026. The restricted area will be lifted on September 25, 2026, unless North Atlantic right whale detections are reported in high number, which would extend the restricted area beyond September 25.

The size and location of the area are determined based on historical detection data of North Atlantic right whales. All necessary details can be found in the *Interim Order for the Protection of North Atlantic Right Whales (Eubalaena Glacialis) in the Gulf of St. Lawrence, 2026*. Triggering and lifting of the restricted area will be communicated to mariners through NAVWARNs and notices to fish harvesters.

Vessels above **13.0 m** in length (LOA) will be required to:

- Avoid the area unless they are part of the exceptions listed in the *Interim Order for the Protection of North Atlantic Right Whales (Eubalaena Glacialis) in the Gulf of St. Lawrence, 2026*;
- Transit the area at a speed not exceeding 8.0 knots over the ground if they are part of the exceptions.

The following exceptions will apply to the restricted area. The following listed vessels can travel through the area at not more than 8.0 knots over the ground:

- A vessel being used for commercial fishing;
- A vessel being used for fishing under the authority of a licence issued under the *Aboriginal Communal Fishing Licences Regulations*;
- A vessel being used for research purposes on behalf of the Government of Canada
- A vessel involved in research relating to right whales as part of a project that has received funding from the Government of Canada;
- A vessel being used as part of the Department of Fisheries and Oceans' Marine Mammal Response Program to assist a marine mammal or sea turtle in distress or to access or retrieve a deceased marine mammal or sea turtle;
- A vessel authorized by the Government of Canada to retrieve or identify the location of abandoned or lost fishing gear;
- A vessel involved in pollution response operations;
- A vessel avoiding immediate or unforeseen danger; or
- A vessel being used to conduct the maintenance or repair of underwater communication cables.

The following vessels can travel through the restricted area at a speed over 8.0 knots, but below 10.0 knots over the ground as required by the static speed restriction zone:

- A vessel being used by an employee of the Government of Canada or peace officer who is performing their duties.

Coordinates for the restricted area:

- 48°31.8' N 063°39.6' W
- 48°24.72' N 063°17.88' W
- 47°18.84' N 064°10.8' W
- 47°27.18' N 064°30.72' W

Report of death or injury

In the event that at least one North Atlantic right whale is reported dead or injured in the Gulf of St. Lawrence in a zone or area where there is no NAVWARN in effect, a speed restriction of 10.0 knots over the ground for vessels above 13.0 m in length overall (LOA) will be implemented in the concerned zone(s) or area(s) for 15 days from the time the NAVWARN comes into effect.

Inclement weather exception

Mariners will be notified in advance via a NAVWARN should the speed restriction status change in any zone or area, due to inclement weather.

Within any zone or area that is no longer subject to a speed restriction due to adverse weather conditions, mariners may proceed at a safe operational speed, but are encouraged to take into consideration the potential for their vessel striking North Atlantic right whales when determining that speed during navigation.

*Non-expected vessels are still prohibited from transiting through the restricted area.

Voluntary seasonal slowdown in Cabot Strait

To coincide with the North Atlantic right whales entering and exiting the Gulf of St. Lawrence in large numbers, a voluntary seasonal slowdown is being put in place in Cabot Strait from April 22 to June 30, 2026, and from September 2 to November 15, 2026.

- During these periods, vessels above 13 m in length (LOA) are requested to voluntarily reduce their speed so as to not exceed 10.0 knots over the ground.

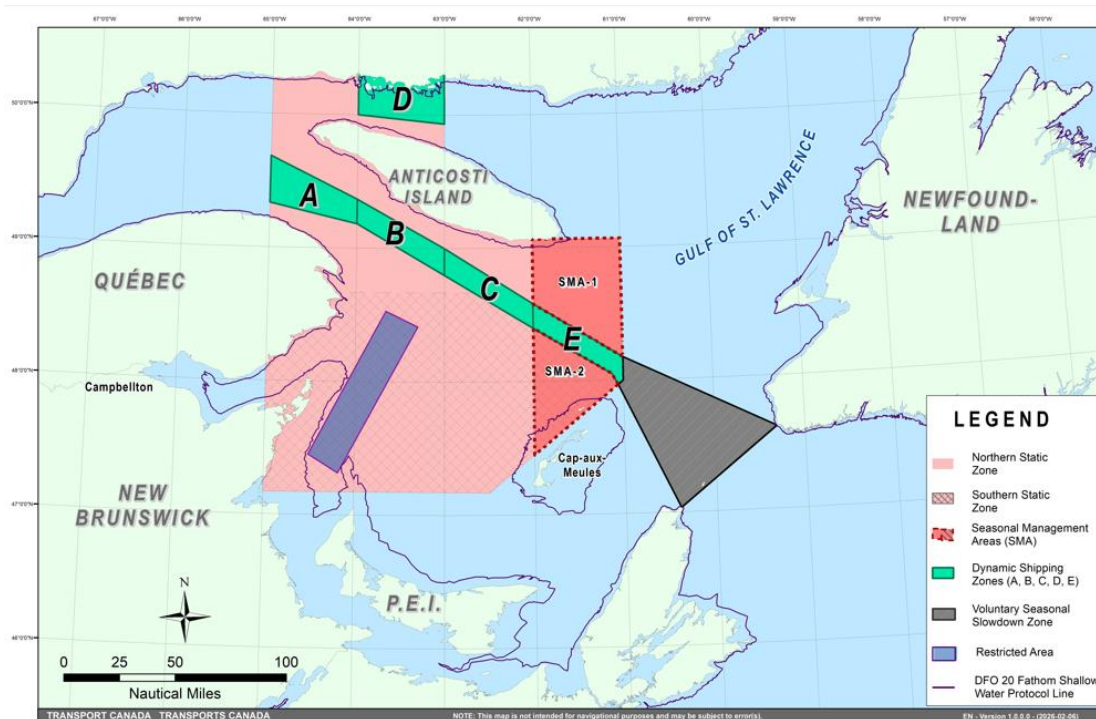
Voluntary seasonal slowdown zone coordinates:

- 48° 10.5' N 061° 00' W
- 47° 37.2' N 059° 18.5' W
- 47° 02' N 060° 23.7' W
- 47° 58.1' N 061° 03.5' W
- 48° 00' N 061° 00' W

Map of the Gulf of St. Lawrence

The map below provides a visual representation of the main zones mentioned. It must not be used for navigation or law enforcement purposes.

- Static zones (north and south), in pink;
- Dynamic shipping zones (A, B, C, D and E), in green;
- Seasonal management areas, in dark pink;
- Voluntary seasonal slowdown zone, in grey;
- Restricted area, in dark blue; and
- 36.57 m (20 fathoms) DFO shallow water protocol line.



Roseway Basin – Area to be Avoided

The Roseway Basin, located approximately 20 nautical miles south of Cape Sable Island, Nova Scotia, is a critical habitat for North Atlantic right whales, which have been observed to gather in the area on a seasonal basis in Canadian waters. This critical habitat is also located near key shipping routes. In 2007, Canada, with the support of many groups with varied interests, proposed to the International Maritime Organization (IMO) the establishment of a seasonal Area to be Avoided in the Roseway Basin to protect North Atlantic right whales, which IMO accepted and adopted.

To reduce the risk of vessels colliding with North Atlantic right whales, it is recommended that vessels of 300 gross tonnages and more, in transit during the period of June 1 through December 31, avoid the Roseway Basin area. Smaller vessels are also encouraged to avoid passage through this area. If passage is necessary within the Area to be Avoided, it is recommended that all mariners decrease their vessel speed to no more than 10 knots, when safe to do so.

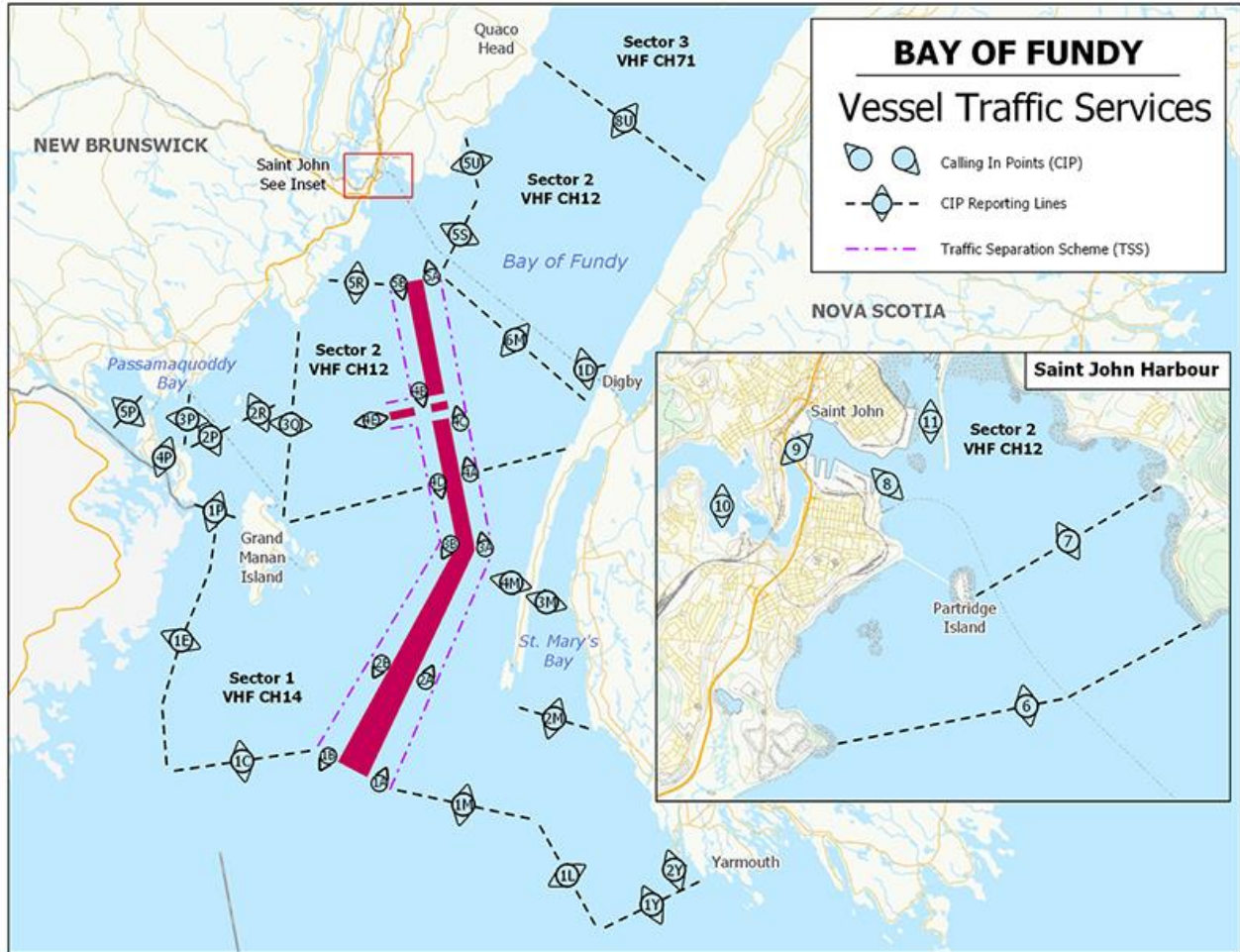
Roseway Basin coordinates:

- 43° 16' N 064° 55' W
- 42° 47' N 064° 59' W
- 42° 39' N 065° 31' W
- 42° 52' N 066° 05' W

Bay of Fundy – Voluntary Slowdown

The Grand Manan Basin located in the Bay of Fundy is identified as a critical habitat for the North Atlantic right whale. When North Atlantic right whales are detected in the Bay of Fundy shipping lanes and near the Grand Manan Basin area (see sectors 1 and 2 on Canadian Coast Guard's map), the Bay of Fundy Vessel

Traffic Services will ask vessels to voluntarily slowdown to 10 knots via VHF channel 12 or 14 at corresponding Calling-in-Points.



This map is for visual representation only and is not to be used for navigation or enforcement.

NAVWARN broadcasts

The Canadian Coast Guard's Marine Communications and Traffic Services Centres (MCTS) issue NAVWARNs:

- By radio broadcast: for marine radio, Continuous Marine Broadcast frequencies and scheduled broadcast times, information may be found in the [Radio Aids to Marine Navigation](#) publication; and
- Online: at [Canada's Maritime Information Portal](#) and its [Navigational Warnings](#) site, using the [North Atlantic Right Whale](#) search term or category.

Mariners must ensure they have accurate and up-to-date information about the protection of the North Atlantic right whale, as in all applicable NOTMARs and NAVWARNs.

Outbound vessels will receive NAVWARNs

- at Calling-in-Point 10 (St-Laurent); or
- upon a departure downstream from the Quebec pilot station (including the Saguenay River, Chaleur Bay, Miramichi Bay, etc.).

Inbound vessels will receive NAVWARNs

- when a clearance to enter Canadian waters is granted.

Vessels in transit will receive NAVWARNs

- at the last reporting point prior to entering the mandatory speed restriction zones;
- vessels in transit will confirm they have received NAVWARNs.

MCTS Centres will broadcast NAVWARNs continuously throughout the season on Continuous Marine Broadcast.

It should be noted that, contrary to previous years' operations, reminders sent to vessels in transit 10 nautical miles before entering a speed restriction zone will no longer be transmitted.

Vessel operators are required to monitor broadcasts by the Canadian Coast Guard's Marine Communications and Traffic Services network for the most up to date information.

Aids to navigation

The Canadian Coast Guard broadcasts virtual Automatic Identification System (AIS) aids to navigation (AIS AtoN) in specific areas. These aids may notify mariners of dynamic shipping zones and/or seasonal management areas subject to speed restrictions.

Each zone is delimited by four to six virtual AIS AtoN, which can be displayed on a ship's navigation equipment, such as

- Electronic Chart Display and Information System (ECDIS);
- Electronic Chart System (ECS);
- Radar;
- Minimum Keyboard Display (MKD).

The Canadian Coast Guard broadcasts the virtual AIS AtoN only when a speed restriction is in effect in one or more zones.

Mariners must select the virtual AIS AtoN symbol to view a message such as "SectA1 Spd Lim 10 kt." This message refers to a speed restriction in effect for a specific zone.

Note: This system is not the primary method of communicating this information.

Compliance and enforcement

Vessels must comply with the Interim Orders made pursuant to the *Canada Shipping Act, 2001*, and any NAVWARNs broadcasted and published by the Canadian Coast Guard relating to the Interim Orders, aimed at regulating the navigation for the purposes of protecting the North Atlantic right whales.

If a vessel does not comply with the Interim Orders or instructions in the NAVWARNs related to the Interim Orders, the vessel could face:

- administrative monetary penalties up to a maximum of CAN \$250,000; and/or
- penal sanctions under the *Canada Shipping Act, 2001* is liable on summary conviction to a fine of not more than CAN \$1,000,000 or to imprisonment for a term of not more than 18 months, or to both.

If a vessel appears to have violated the speed restriction, Transport Canada Marine Safety inspectors will review all information provided through AIS and seek an explanation from the master.

No exemptions to the speed restriction will be granted in advance. However, if a deviation from the speed restrictions is necessary for safety reasons, the following information must be entered into the bridge logbook:

- reason(s) for deviation;
- speed at which vessel is operated;
- latitude and longitude at time of deviation;
- time and duration of deviation; and
- master of the vessel shall sign and date the bridge logbook entry.

For any deviation, Transport Canada will review and consider reasons such as:

- navigating to ensure vessel safety;
- weather conditions;
- force majeure (unforeseeable circumstances); and
- responding to emergencies.

Report a North Atlantic right whale sighting

If you see **live, free-swimming whales**:

- **Email:** DFO.GLFWWhales-BaleinesGLF.MPO@dfo-mpo.gc.ca
- When reporting sightings of North Atlantic right whales, you must include: GPS location (latitude and longitude), date and time of sighting, number of marine mammals, **photograph(s)/video(s) collected** and if possible, behavior of marine mammals observed (ex., feeding, travelling, diving).

Sightings of entangled, injured or dead North Atlantic right whale

If you see a North Atlantic right whale (and all other marine mammals) **entangled, injured or dead**, please document and report it immediately to the regional Response Network.

- When documenting you should collect: GPS location (latitude and longitude), date and time of sighting, number of marine mammals, photograph(s)/video(s), and description of the incident to provide to the Response Network.

Southern part of the Gulf of St. Lawrence (New Brunswick, Nova Scotia & Prince Edward Island)

Marine Animal Response Society
Telephone: 1-866-567-6277

Newfoundland and Labrador

Whale Release and Strandings Newfoundland and Labrador (Tangly Whales Inc.)
Telephone: 1-888-895-3003 or 1-709-895-3003

Quebec

Réseau québécois d'urgences pour les mammifères marins (RQUMM)
Telephone: 1-877-722-5346

Report a marine mammal or sea turtle incident or sighting:

For [more information](#) on reporting other marine mammal or sea turtle sighting and incidents.

Please consult [Whale Insight](#) for the latest right whale observations.

***406/26 Saguenay–St. Lawrence Marine Park - Beluga Whale Protection: Slowdown Area at the Mouth of the Saguenay Fjord and Area Closure at Baie Sainte-Marguerite**

*(Recurrent publication of notice *406/26, originally published in the Notices to Mariners – Monthly Eastern Edition 04/2026 publication.)*

The Saguenay–St. Lawrence Marine Park and its surrounding area are at the heart of endangered beluga whale critical summer habitat. Marine mammal protection measures have been put in place in accordance with the *Marine Activities in the Saguenay–St. Lawrence Marine Park Regulations* within the limits of the Marine Park.

However, important feeding, calving and rearing areas for beluga whales require greater protection to ensure the recovery of the species. The portion of the Saguenay situated between the mouth of the Fjord and Baie Sainte-Marguerite is one of the areas most used by females and their young from May to October. The mouth of the Saguenay is known as a feeding ground and Baie Sainte-Marguerite as a calving and rearing area.

In order to prevent collisions with beluga whales, a compulsory 15-knot slowdown area is in effect from May 1st to October 31st at the mouth of the Saguenay. To ensure tranquility for female belugas and their young during the critical calving period, access to Baie Sainte-Marguerite is prohibited to all vessels from June 21st to September 21st, except for special authorizations (see description below).

For safety reasons, *the slowdown area measure at the mouth of the Saguenay Fjord does not apply* to cargo ships (see the monthly edition of *Notice to Mariners* from May to October for voluntary protection measures in the St. Lawrence Estuary). An enhanced vigilance is, however, recommended to all navigators between the mouth of the Saguenay Fjord and Baie Sainte-Marguerite for the protection of beluga whales.

For more information on the Saguenay–St. Lawrence Marine Park, see notice 5C of the *Notices to Mariners Annual Edition 2026* or visit the [Saguenay–St. Lawrence Marine Park website](#).

REGULATORY PROTECTION MEASURES — BELUGA WHALE

Entire Marine Park Territory:

- When beluga whales are less than half a nautical mile (926 metres) from a motorized vessel, the vessel must maintain a steady speed of between 5 and 10 knots.
- All vessels, including human-powered vessels (kayaks and canoes), must continue to move forward and maintain their heading.
- All vessels must maintain a minimum distance of 400 metres from beluga whales at all times.

For more information concerning the regulations, consult the ["Navigate" section of the Saguenay–St. Lawrence Marine Park website](#).

Mouth of the Saguenay Fjord (Figure 1) — Slowdown Area (area crosshatched in red):

- Maximum speed at the mouth of the Saguenay between buoys S7 and S8 and the ferry docks between Baie-Sainte-Catherine and Tadoussac is 15 knots from May 1st to October 31st.

Baie Sainte-Marguerite (Figure 2) — Area Closure (red area):

- From June 21st to September 21st, vessels must not enter the red area, which follows a line between Cap Nord-Ouest and Cap Sainte-Marguerite.
- Special authorizations are granted only for kayaks, canoes and recreational fishermen who must travel without stopping along a corridor within 10 metres of the shore or in shallow areas.

VOLUNTARY PROTECTION MEASURES

Baie Sainte-Marguerite sector (Figure 2) — Transit Area (area crosshatched in yellow):

- From June 21st to September 21st, navigation in this area is recommended at a speed of between 5 and 10 knots without stopping.

The purpose of this transit area is to favour respect of the *Marine Activities in the Saguenay–St. Lawrence Marine Park Regulations*, since beluga whales are often present in the Baie Sainte-Marguerite sector.

INFORMATION

All incidents, including collisions with whales, must be reported without delay by calling 1-866-508-9888. For any other situation concerning a marine mammal that is either dead or in trouble, contact the Marine Mammal Emergency Response Network at 1-877-722-5346, or use VHF channel 16.

Figure 1

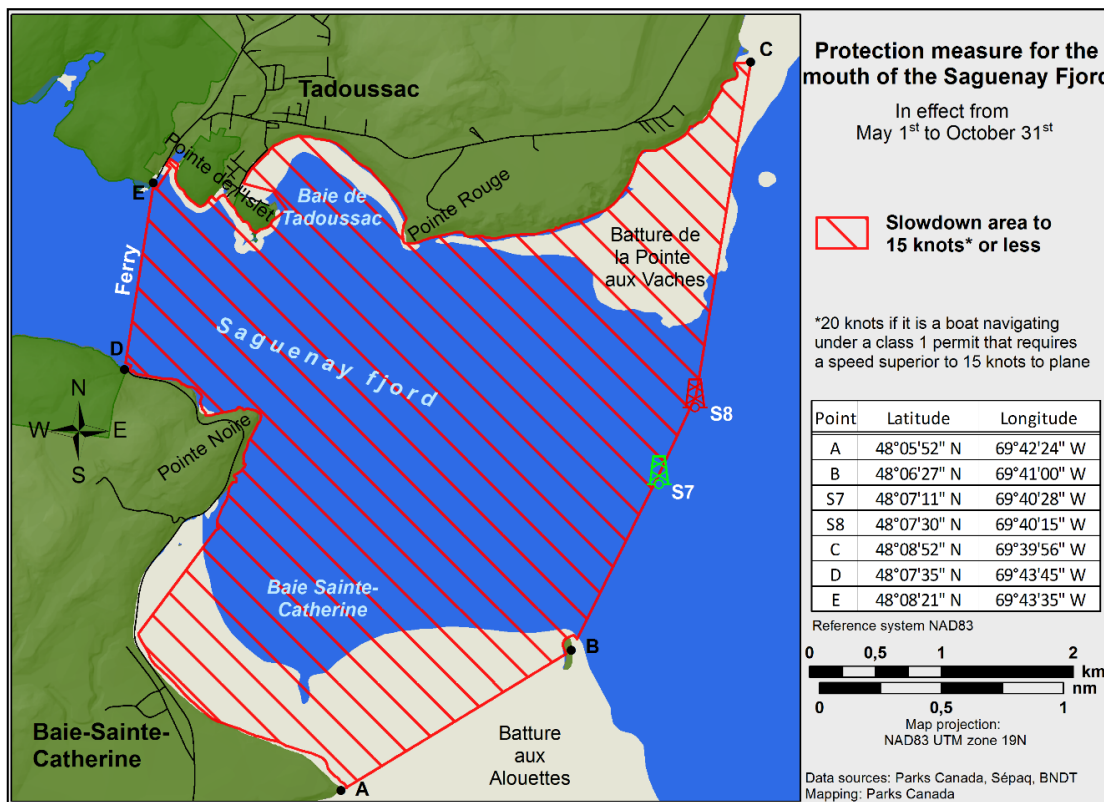
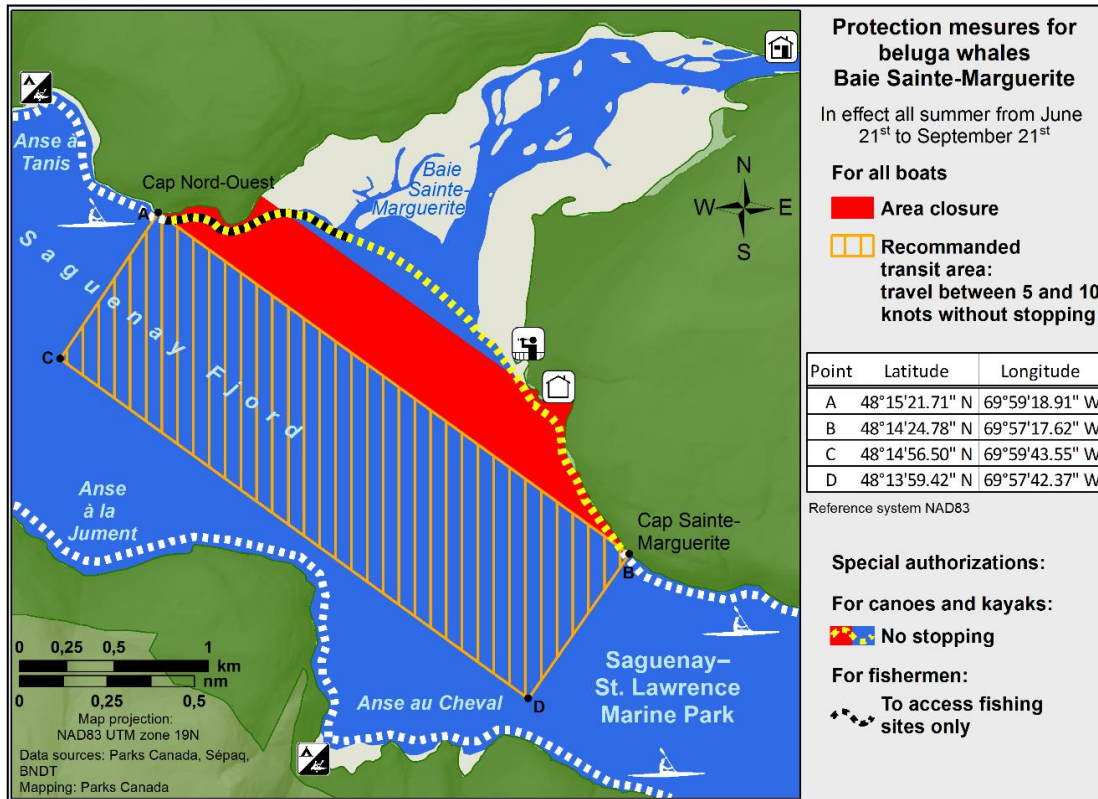


Figure 2



***407/26 Saguenay–St. Lawrence Marine Park and Surrounding Waters – Whale Protection**

(Recurrent publication of notice *407/26, originally published in the Notices to Mariners – Monthly Eastern Edition 04/2026 publication.)

The waters in and around the Saguenay–St. Lawrence Marine Park are well known for the resident endangered beluga population and the wide diversity of whales that migrate there to feed, particularly between April and November.

Regulatory protection measures

All whale species that are found in the St. Lawrence are protected under the *Marine Mammal Regulations*, pursuant to the *Fisheries Act*. Within the boundaries of the Marine Park, specific measures are set out in the *Marine Activities in the Saguenay–St. Lawrence Marine Park Regulations*, pursuant to the establishment of the *Saguenay–St. Lawrence Marine Park Act*. Any collision with a marine mammal within the Marine Park must immediately be reported to a park warden at 1-866-508-9888. For collisions that occur outside the Marine Park or for any situation involving a marine mammal that is dead or in trouble, contact the emergency network at 1-877-722-5346 or on VHF channel 16.

For more information on the Saguenay–St. Lawrence Marine Park, see notice 5C of the *Notices to Mariners Annual Edition 2026*.

Voluntary protection measures

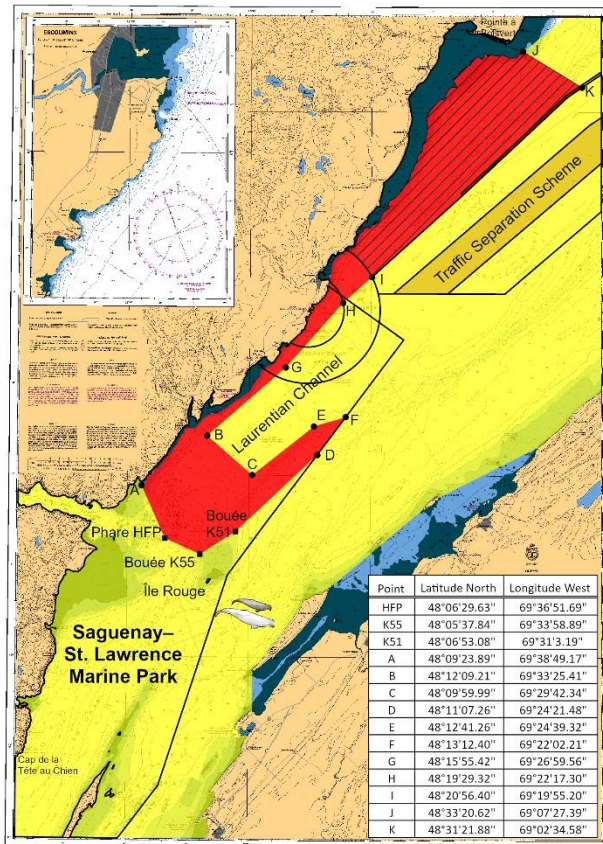
Provisional measures in effect from May 1 to October 31, 2026. See map at the end of this notice.

These measures apply to merchant vessels and cruise ships between Pointe à Boisvert and Cap de la Tête au Chien to prevent collisions with whales. These measures should only be taken when they will not jeopardize navigational safety.

Caution area (yellow area): To reduce the risk of collisions with whales that can be present anywhere in this area, heightened vigilance of navigators is critical. Posting a lookout is recommended in order to increase the chances of seeing the whales and thus taking necessary measures to avoid them. If bypassing the whales is not possible, slow down and wait for the animals to move away to a distance greater than 400 metres (0.215 nautical miles) before resuming original speed. It is more difficult to see the animals at night therefore increased caution is recommended.

Slow down to 10 knots or less area (red area): To reduce the risk of collisions with whales in this feeding area, it is recommended that vessels slow down to a maximum speed through the water of 10 knots and post a lookout. It is further recommended to remain in the Laurentian Channel to the north of Île Rouge to minimize the impact of noise in a sensitive area south of this island, which is highly frequented by herds of beluga whales composed of females and young.

Area to be avoided (hatched red area): To reduce noise and the risk of collisions with whales, vessels should avoid transiting through this area which is highly frequented by blue whales, an endangered species. If the area cannot be avoided, slow down to a speed through the water of 10 knots or less.

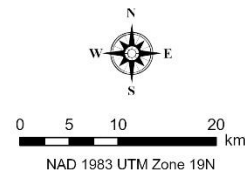


Voluntary protection measures to reduce the risk of ship strikes with whales and to minimize the impact of noise on beluga whale

Provisional measures in effect from May 1st to October 31st 2026

- Caution area**
presence of whales
- Slow down to 10 knots* or less area**
Important whale feeding area
- Area to be avoided; if impossible, slow down to 10 knots* or less**
Important blue whale area
- Sensitive area highly used by beluga herds composed of females and young
It is recommended to navigate in the Laurentian Channel north of Île Rouge

* 10 knots refers to speed through water



***501/26 Canadian Hydrographic Service – Nautical Charts**

Charts	Main Title	Version Date	Release Date
New Editions			
3012	Queen Charlotte Sound to / à Dixon Entrance	2026-04-10	2026-05-29

***502/26 Canadian Hydrographic Service – Electronic Navigational Charts**

S-57 & S-101 ENC Number	Chart Title	Usage	Published
New Products			
101CA00P451N0660W (Edn 2.000)	101CA00P451N0660W	PORT	2026-05-01
CA493LLA (Edn 1.000)	CA493LLA	TRANSIT	2026-05-01
CA493LWA (Edn 1.000)	CA493LWA	TRANSIT	2026-05-01
CA49DNQA (Edn 1.000)	CA49DNQA	TRANSIT	2026-05-01
CA49DP1A (Edn 1.000)	CA49DP1A	TRANSIT	2026-05-01
CA49DPBA (Edn 1.000)	CA49DPBA	TRANSIT	2026-05-01
CA4BHKPA (Edn 2.000)	Transit700N0790W	TRANSIT	2026-05-01
CA53VLKA (Edn 1.000)	CA53VLKA	PORT	2026-05-01
CA53VLLA (Edn 1.000)	CA53VLLA	PORT	2026-05-01
CA53VLMA (Edn 1.000)	CA53VLMA	PORT	2026-05-01
CA53WLMA (Edn 1.000)	CA53WLMA	PORT	2026-05-01
CA53WLNA (Edn 1.000)	CA53WLNA	PORT	2026-05-01
CA53XLNA (Edn 1.000)	CA53XLNA	PORT	2026-05-01
CA53XLPA (Edn 1.000)	CA53XLPA	PORT	2026-05-01
CA53YLPA (Edn 1.000)	CA53YLPA	PORT	2026-05-01
CA540LNA (Edn 1.000)	CA540LNA	PORT	2026-05-01
CA540LPA (Edn 1.000)	CA540LPA	PORT	2026-05-01
CA541LNA (Edn 1.000)	CA541LNA	PORT	2026-05-01
CA541LPA (Edn 1.000)	CA541LPA	PORT	2026-05-01
CA542LNB (Edn 1.000)	CA542LNB	PORT	2026-05-01
CA542LPB (Edn 1.000)	CA542LPB	PORT	2026-05-01
CA544QUA (Edn 1.000)	Antigonish Harbour	PORT	2026-05-01
CA544QVA (Edn 1.000)	Antigonish Harbour	PORT	2026-05-01
CA545QVA (Edn 2.000)	CA545QVA	PORT	2026-04-24
CA594LYA (Edn 1.000)	CA594LYA	PORT	2026-05-01
CA594M0A (Edn 1.000)	CA594M0A	PORT	2026-05-01
CA595LPA (Edn 1.000)	CA595LPA	PORT	2026-05-01
CA595LQA (Edn 1.000)	CA595LQA	PORT	2026-05-01
CA595LYA (Edn 1.000)	CA595LYA	PORT	2026-05-01
CA59ANFA (Edn 1.000)	CA59ANFA	PORT	2026-05-01

S-57 & S-101 ENC Number	Chart Title	Usage	Published
CA59ANGA (Edn 1.000)	CA59ANGA	PORT	2026-05-01
CA59ANHA (Edn 1.000)	CA59ANHA	PORT	2026-05-01
CA59BNFA (Edn 1.000)	CA59BNFA	PORT	2026-05-01
CA59BNGA (Edn 1.000)	CA59BNGA	PORT	2026-05-01
CA59NF1A (Edn 1.000)	Port6390N09440W	PORT	2026-05-01
CA59NF2A (Edn 1.000)	Port6390N09430W	PORT	2026-05-01
CA59NF3A (Edn 1.000)	Port6390N09420W	PORT	2026-05-01
CA59PF0A (Edn 1.000)	Port6400N09450W	PORT	2026-05-01
CA59PF1A (Edn 1.000)	Port6400N09440W	PORT	2026-05-01
CA59PF2A (Edn 1.000)	Port6400N09430W	PORT	2026-05-01
CA59PF3A (Edn 1.000)	Port6400N09420W	PORT	2026-05-01
CA59QF0A (Edn 1.000)	Port6409N09450W	PORT	2026-05-01
CA59QF1A (Edn 1.000)	Port6409N09440W	PORT	2026-05-01
CA59QF2A (Edn 1.000)	Port6409N09430W	PORT	2026-05-01
CA59REHA (Edn 1.000)	Port6420N09610W	PORT	2026-05-01
CA59SEHA (Edn 1.000)	Port6430N09610W	PORT	2026-05-01
CA5B3CRA (Edn 2.000)	Port6859N10190W	PORT	2026-05-01
CA5B3CSA (Edn 2.000)	Port6859N10180W	PORT	2026-05-01
CA5B4ALA (Edn 2.000)	Port6870N10900W	PORT	2026-05-01
New Editions			
CA45FRFA (Edn 4.000)	Transit5000N06000W	TRANSIT	2026-05-15
CA471013 (Edn 3.000)	Hippa Island	TRANSIT	2026-05-01
CA471109 (Edn 3.000)	CA471109	TRANSIT	2026-05-01
CA471110 (Edn 3.000)	CA471110	TRANSIT	2026-05-01
CA471111 (Edn 3.000)	CA471111	TRANSIT	2026-05-01
CA471112 (Edn 3.000)	CA471112	TRANSIT	2026-05-01
CA471139 (Edn 3.000)	CA471139	TRANSIT	2026-05-01
CA471140 (Edn 3.000)	CA471140	TRANSIT	2026-05-15
CA471145 (Edn 2.000)	CA471145	TRANSIT	2026-05-01
CA471147 (Edn 2.000)	CA471147	TRANSIT	2026-05-01
CA471148 (Edn 2.000)	CA471148	TRANSIT	2026-05-01
CA53XMDA (Edn 2.000)	Port4500N07340W	PORT	2026-04-24
CA53YPMA (Edn 2.000)	Saint John Harbour and Approaches / et les approches	PORT	2026-05-01
CA54QQYA (Edn 2.000)	Port4760N06160W	PORT	2026-04-24
CA54RQ1A (Edn 3.000)	CA54RQ1A	PORT	2026-05-01
CA55HQ0A (Edn 3.000)	Port5020N06480W	PORT	2026-04-24

S-57 & S-101 ENC Number	Chart Title	Published
Charts Permanently Withdrawn		
CA373066	Jackfish Bay to St. Ignace Island	2026-05-29
CA373067	Oiseau Bay to Jackfish Bay	2026-05-29
CA373070	Passage Island to/à Thunder Bay	2026-05-29
CA373072	West of Michipicoten Island to Simons Harbour	2026-05-29
CA373086	Cape Gargantua to/à Otter Head	2026-05-29
CA373110	Coppermine Point to Cape Gargantua	2026-05-29
CA373291	Nipigon Bay and Approaches	2026-05-29
CA373473	Culbertson Island to/à Koojesse Inlet	2026-05-01
CA473379	Deception Bay	2026-05-01
CA473456	Approaches to/ Approches à Koojesse Inlet	2026-05-01
CA473474	Pike-Resor Channel	2026-05-01
CA473475	Culbertson Island to/à Frobisher's Farthest	2026-05-01
CA473485	Sugluk Inlet	2026-05-01
CA4BHKDA	CA4BHKDA	2026-05-01
CA573136	Quebec Harbour	2026-05-29
CA573376	Salluit	2026-05-01
CA573411	Red Rock	2026-05-29
CA5B4AMA	Port6870N10900W	2026-05-01
CA5B4CRA	Port6860N1019W	2026-05-01
CA5B4CSA	Port6860N10180W	2026-05-01

***503/26 Canadian Hydrographic Service – Raster Digital Charts (BSB V3)**

Charts	Main Title	Published
Charts Permanently Withdrawn		
RM-4446	Antigonish Harbour	2026-05-01

***504/26 Transport Canada - Ship Safety Bulletin #05/2026**

A new **Ship Safety Bulletin** has recently been posted on the [Transport Canada website](#).

To view or download this bulletin, please click on the link below:

[SSB#05/2026](#) – The Marine Safety Management System Regulations Second Anniversary

Sign up for [e-Bulletin](#) to receive an e-mail notice each time a new Ship Safety Bulletin is published on our website.

Contact us at marinesafety-securitemaritime@tc.gc.ca or 1-855-859-3123 (Toll Free).

***506/26 Canadian Coast Guard Publication - Amendments to the *Notices to Mariners Annual Edition 2026* - Section A2, Notice 5: General Guidelines for Aquatic Species at Risk and Important Marine Mammal Areas**

Several amendments have been made throughout Notice 5, General Guidelines for Aquatic Species at Risk and Important Marine Mammal Areas.

The latest version of this notice is available on the [Notices to Mariners website](#).

***507/26 Canadian Coast Guard Publication - Amendments to the *Notices to Mariners Annual Edition 2026* - Section A2, Notice 5A: General Requirements for Oceans Act Marine Protected Areas and Fisheries Act Marine Refuges**

Starting at page 31:

AMEND AS FOLLOWS:

Regulatory Protection Measures for Tarium Niryutait Marine Protected Areas

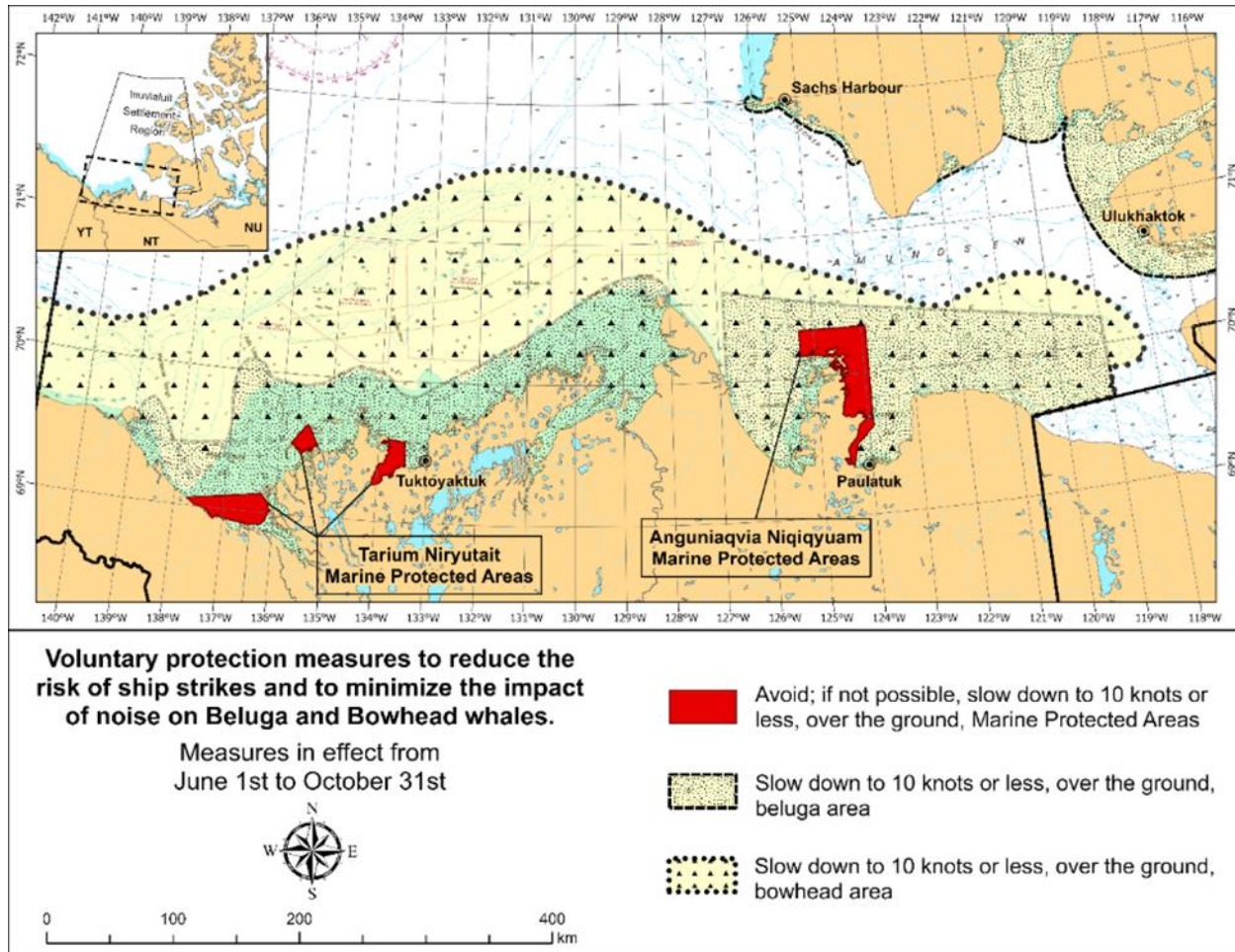
- Pursuant to the **Oceans Act**, the Regulations set out a general prohibition within the boundaries of the Marine Protected Areas, prohibiting any activities that will or are likely to disturb, damage, destroy or remove any living marine organism or any part of its habitat from the areas. Any accident within the Tarium Niryutait Marine Protected Areas must be reported within two hours after its occurrence, to the Canadian Coast Guard.

Other Requirements Applying in the Area

- In the spirit of the **Inuvialuit Final Agreement**, it is forbidden for ships to approach the traditional marine mammal harvest grounds, or to approach marine mammals unless they are directly associated with the traditional harvest of these animals. Information regarding the traditional harvest can be gained from the community **Hunters** and Trappers Committees: Aklavik HTC aklavikahtc@gmail.com, hunteraklavik@gmail.com, (867) 978-2723; Inuvik HTC, inuvikhtc@hotmail.com, (867) 777-2478; Tuktoyaktuk HTC, tuk.htc@outlook.com, (867) 340-0057 or the Fisheries Joint Management Committee (fjmc-rp@jointsec.nt.ca).
- For marine wildlife sightings and incidents such as collisions that occur outside the Marine Protected Areas or for any situation involving a marine mammal that is dead or in trouble, contact Fisheries and Oceans Canada, Inuvik office at (867) 777-7500.
- As per the Marine Mammal Regulations (2018), pursuant to the *Fisheries Act*, reporting of accidental contact with marine mammals is required.

ADD AS FOLLOWS:

These voluntary measures are secondary to rights under the **Inuvialuit Final Agreement**.



Starting at page 35:

AMEND AS FOLLOWS:

Regulatory Requirements for **Vessels Operating in the Anguniaqvia Niqiqyuam Marine Protected Areas**

See **Section 5A - General Regulatory Requirements for all Oceans Act Marine Protected Areas.**

Regulatory Protection Measures for Anguniaqvia Niqiqyuam Marine Protected Areas

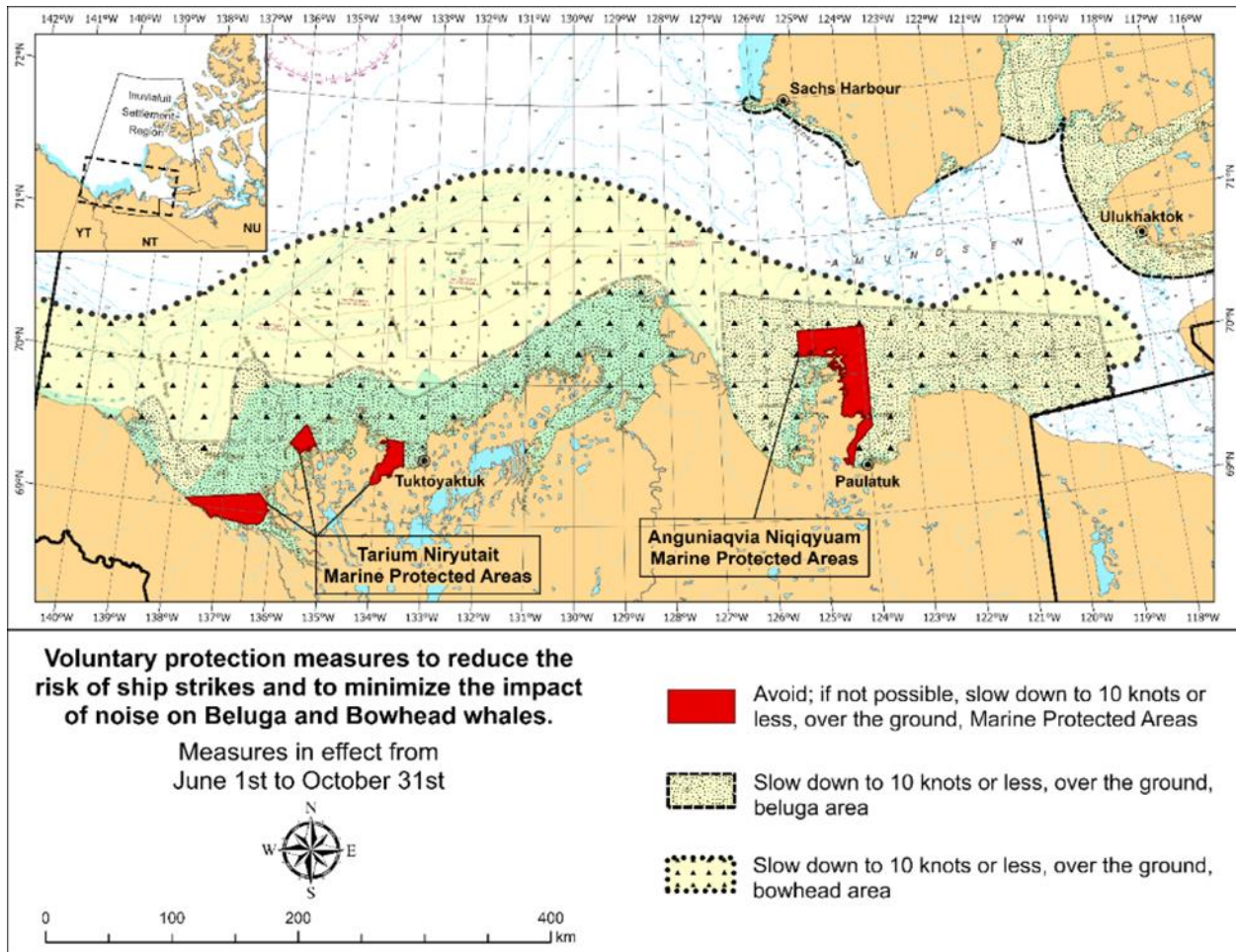
- Pursuant to the *Oceans Act*, the Regulations set out a general prohibition within the boundaries of the Marine Protected Areas prohibiting any activities that will or are likely to disturb, damage, destroy or remove any living marine organism or any part of its habitat from the areas. Any accident within the Anguniaqvia Niqiqyuam Marine Protected Areas **should** be reported within two hours after its occurrence, to the Canadian Coast Guard.

Other Requirement for the Marine Protected Areas

- In the spirit of the [Inuvialuit Final Agreement](#), it is forbidden for ships to approach the traditional marine mammal harvest grounds, or to approach marine mammals unless they are directly associated with the traditional harvest of these animals. Information regarding the traditional harvest can be gained from Paulatuk [Hunters](#) and Trappers Committee: paulatukhtc@gmail.com, (867) 580-3004, or the Fisheries Joint Management Committee (fjmc-rp@jointsec.nt.ca).
- For marine wildlife sightings and incidents such as collisions that occur outside the MPAs or for any situation involving a marine mammal that is dead or in trouble, contact Fisheries and Oceans Canada, Inuvik office at (867) 777-7500.
- As per the Marine Mammal Regulations (2018), pursuant to the *Fisheries Act*, reporting of accidental contact with marine mammals is required.

ADD AS FOLLOWS:

These voluntary measures are secondary to rights under the [Inuvialuit Final Agreement](#).



***508/26 Sorel-Tracy à/to Otterburn-Park – Private Buoys Repositioned**

Reference chart: 1350

The following private buoys have been repositioned to the following coordinates:

Aid Name	LL No.	Position
Beloeil Municipal Wharf	12789	45° 34' 10.4"N 073° 11' 53.6"W
Beloeil Municipal Wharf	12790	45° 34' 09.5"N 073° 11' 54.2"W

(Q2026-023, 024)

***509/26 Belleville Harbour – Unlit Buoys Permanently Changed**

Reference chart: 2011

The following unlit buoys have been changed permanently:

Aid Name	LL No.	Position	Changes
Buoy Q56/2	7229.5	44° 08' 55.5"N 077° 22' 56.0"W	Discontinued.
Buoy QM2	7252	44° 09' 11.2"N 077° 22' 30.8"W	Buoy designator changed from QM4 to QM2.
Buoy QM1	7253	44° 09' 11.0"N 077° 22' 31.8"W	Buoy designator changed from QM5 to QM1.
Buoy QM4	7254.2	44° 09' 15.1"N 077° 22' 43.4"W	Unlit starboard buoy established.

(B2026-010, 014 to 016)

Section 1A: Temporary and Preliminary Notices

Reminder – Comment Period for Active Preliminary Notices

No notices applicable for this edition.

Newfoundland and Labrador Coast

Temporary Notices

No notices applicable for this edition.

Preliminary Notices

No notices applicable for this edition.

Atlantic Coast

Temporary Notices

***510(T)/26 Batiscan au/to Lac Saint-Pierre – Works: Construction Operations**

Reference chart: 1313

Construction operations taking place until August 30, 2026 at wharf 16 and 17. Barges on site.

Minimum wake requested.

(NW-C-1477-26)

***511(T)/26 Charlottetown Harbour – Marine Works**

Reference chart: 4460

Bridge work underway on the Hillsborough Bridge between Charlottetown and Stratford since May 18, 2026. Temporary work platforms are installed underneath the road deck. Passage of vessels is not restricted.

(NW-M-0590-26)

***512/26 Batiscan au/to Lac Saint-Pierre – Diving Operations Completed**

Reference: Notice 1119(T)/24 is cancelled (Chart 1313).

The diving operations taking place in Port of Trois-Rivières at wharf 17 are completed.

***513/26 St. Marys Bay – Wreck Charted**

Reference: Notice 509(T)/23 is cancelled (Chart 4118).

The sunken 30 by 90 feet barge with 500 feet of tow line has been charted on chart 4118.

Preliminary Notices

No notices applicable for this edition.

Inland Waters

Temporary Notices

***514(T)/26 Lake Superior – Waterway Information: Shallow Depth Reported**

Reference chart: N/A

Due to low water levels and possible silting, shallower depths are reported within the launch ramp area at the Harmony Bay Small Craft Harbour. Caution.

(NW-C-2073-25)

***515/26 Port of Thunder Bay – Obstruction Charted**

Reference: Notice 815(T)/24 is cancelled (Chart 2314).

Lost anchor and chain have been charted on ENC CA573253.

Preliminary Notices

No notices applicable for this edition.

Arctic Coast

Temporary Notices

No notices applicable for this edition.

Preliminary Notices

Arctic Region

Comment Submission

Comments on proposed changes in preliminary (P) notices are solicited from mariners and other interested parties within three months of the initial publication date. Following this date, the notices will be cancelled. Any objections raised must state the facts on which they are based and should include supporting information on safety, commerce and public benefit.

Comments should be directed to the following:

Superintendent,
Aids to Navigation & Waterways
Canadian Coast Guard, Arctic Region
5120 49th Street
Yellowknife NT. X1A 1P8
Telephone: (867) 444-0109
Email: [DFO.CCGArcticAidstoNavigation-
AidesalanavigationArctiqueGCC.MPO@dfo-
mpo.gc.ca](mailto:DFO.CCGArcticAidstoNavigation-AidesalanavigationArctiqueGCC.MPO@dfo-mpo.gc.ca)

***516(P)/26 Coronation Gulf Western Portion/Partie Ouest – Daybeacon to be Discontinued**

Reference chart: 7777

The Canadian Coast Guard proposes to permanently discontinue the following aid to navigation:

Aid Name	LL No.	Position
Locker Point	4488	68° 14' 29.7"N 114° 00' 00.1"W

Initial publication date: Friday, May 29, 2026

[Comment submission deadline](#): Thursday, August 27, 2026

(A2026-001)

***517(P)/26 Coronation Gulf Eastern Portion/Partie Est – Daybeacons to be Discontinued**

Reference chart: 7778

The Canadian Coast Guard proposes to permanently discontinue the following aids to navigation:

Aid Name	LL No.	Position
Sisters Island	4491	68° 24' 12.9"N 111° 35' 18.2"W
Ivuniryuaq South	4492	68° 13' 09.5"N 110° 57' 18.7"W
Ivuniryuaq	4493	68° 22' 20.8"N 110° 52' 19.8"W

Initial publication date: Friday, May 29, 2026

[Comment submission deadline](#): Thursday, August 27, 2026

(A2026-002, 003, 004)

Section 2: Chart Corrections

1236 - Matane - New Edition - 26-OCT-2012 - NAD 1983

22-MAY-2026

LNMD/08-MAY-2026

Add	depth of 4,4 metres (See Chart 1, I10)	48°50'50.7"N 067°34'26.6"W <i>DFO(6411393-01)</i>
Delete	depth of 6,1 metres (See Chart 1, I10)	48°50'52.6"N 067°34'31.2"W <i>DFO(6411393-02)</i>
Add	depth of 5,7 metres (See Chart 1, I10)	48°50'52.6"N 067°34'31.2"W <i>DFO(6411393-03)</i>
Delete	depth of 5,1 metres (See Chart 1, I10)	48°50'50.6"N 067°34'42.6"W <i>DFO(6411393-04)</i>
Add	depth of 4,9 metres (See Chart 1, I10)	48°50'50.6"N 067°34'42.6"W <i>DFO(6411393-05)</i>
Add	depth of 2,7 metres (See Chart 1, I10)	48°50'33.4"N 067°34'27.9"W <i>DFO(6411393-06)</i>

1236 - Port de Rimouski - New Edition - 26-OCT-2012 - NAD 1983

08-MAY-2026

LNMD/05-DEC-2025

Delete	depth of 5,0 metres (See Chart 1, I10)	48°28'41.1"N 068°30'53.9"W <i>DFO(6411385-01)</i>
Add	depth of 4,5 metres (See Chart 1, I10)	48°28'41.0"N 068°30'54.1"W <i>DFO(6411385-02)</i>
Delete	depth of 5,1 metres (See Chart 1, I10)	48°28'42.8"N 068°30'56.1"W <i>DFO(6411385-03)</i>
Add	depth of 4,5 metres	48°28'42.2"N 068°30'57.2"W <i>DFO(6411385-04)</i>
Add	depth of 4,6 metres (See Chart 1, I10)	48°28'44.8"N 068°31'01.7"W <i>DFO(6411385-05)</i>
Add	depth of 4,8 metres (See Chart 1, I10)	48°28'46.1"N 068°30'56.3"W <i>DFO(6411385-06)</i>
Add	depth of 4,7 metres (See Chart 1, I10)	48°28'48.0"N 068°30'59.4"W <i>DFO(6411385-07)</i>

Delete	depth of 5,1 metres (See Chart 1, I10)	48°28'48.1"N 068°31'02.3"W <i>DFO(6411385-08)</i>
Add	depth of 4,8 metres (See Chart 1, I10)	48°28'47.9"N 068°31'01.8"W <i>DFO(6411385-09)</i>
Add	depth of 4,8 metres (See Chart 1, I10)	48°28'47.7"N 068°31'07.4"W <i>DFO(6411385-10)</i>
Delete	depth of 5,1 metres (See Chart 1, I10)	48°28'52.0"N 068°31'07.9"W <i>DFO(6411385-12)</i>
Add	depth of 4,9 metres (See Chart 1, I10)	48°28'53.2"N 068°31'08.0"W <i>DFO(6411385-13)</i>
Add	depth of 3,8 metres (See Chart 1, I10)	48°28'53.6"N 068°31'05.3"W <i>DFO(6411385-14)</i>
Add	depth of 4,8 metres (See Chart 1, I10)	48°28'43.5"N 068°30'55.0"W <i>DFO(6411385-15)</i>

1312 - Lac Saint-Pierre - New Edition - 10-MAY-2019 - NAD 1983
29-MAY-2026

LNMD. 27-FEB-2026

Replace	red starboard pillar buoy, marked S92 with red starboard lighted pillar buoy FI R, marked S92 (See Chart 1, Q23, Qf)	46°10'28.1"N 072°55'34.3"W <i>(Q2026014) LL(2150.2) DFO(6411382-01)</i>
---------	---	--

1315 - Québec à/to Donnacona - New Edition - 24-MAY-2019 - NAD 1983
08-MAY-2026

LNMD. 03-APR-2026

Add	Ru against wharf (See Chart 1, F33)	46°49'27.7"N 071°11'46.7"W <i>DFO(6411380-01)</i>
-----	--	--

1316 - Port de Québec - New Edition - 03-APR-2020 - NAD 1983
08-MAY-2026

LNMD. 23-JAN-2026

Add	Ru against wharf (See Chart 1, F33)	46°49'27.7"N 071°11'46.7"W <i>DFO(6411380-01)</i>
Amend	9m (2021) to read Unsurveyed / Non levé (See Chart 1, I22, I25)	46°49'27.9"N 071°11'45.5"W <i>DFO(6411380-02)</i>

1317 - Continuation A - New Edition - 03-APR-2020 - NAD 1983
08-MAY-2026

LNMD. 03-APR-2026

Add	Ru against wharf (See Chart 1, F33)	46°49'27.7"N 071°11'46.7"W <i>DFO(6411380-01)</i>
-----	--	--

1431 - Baie Saint-François - New Edition - 25-FEB-2022 - NAD 1983

08-MAY-2026

LNMD. 27-DEC-2024

Add submerged pier in ruins, marked Ru
(See Chart 1, F33)

joining 45°14'35.0"N 074°10'19.9"W
45°14'34.3"N 074°10'22.2"W
and 45°14'31.1"N 074°10'22.2"W
DFO(6605689-01)

1431 - Canal de Beauharnois - New Edition - 25-FEB-2022 - NAD 1983

08-MAY-2026

LNMD. 27-DEC-2024

Add submerged pier in ruins, marked Ru
(See Chart 1, F33)

joining 45°14'35.0"N 074°10'19.9"W
45°14'34.3"N 074°10'22.2"W
and 45°14'31.1"N 074°10'22.2"W
DFO(6605689-01)

1434 - A à/to B - New Edition - 24-APR-2015 - World Geodetic System 1984

15-MAY-2026

LNMD. 13-FEB-2026

Add obstruction, depth unknown Rep (2025)
(See Chart 1, K40)

44°56'23.5"N 075°02'40.2"W
DFO(6605683-01)

1550 - Britannia Bay à/to Breckenridge - Sheet/Feuille 1 - New Edition - 27-MAY-2011 - NAD 1983

08-MAY-2026

LNMD. 19-SEP-2025

Add green port spar buoy, marked K3/1

45°22'58.3"N 075°52'17.9"W
(B2026006) DFO(6605684-01)

2016 - Charity Shoal to/à Gull Bar including / y compris Long Point - New Chart - 04-MAR-2022 - World Geodetic System 1984

15-MAY-2026

LNMD. 19-DEC-2025

Amend measured distance with bearing 016° - 196° to read 017° - 197°
(See Chart 1, M5.2)

between 43°55'30.8"N 076°42'30.7"W
and 44°02'50.0"N 076°39'24.2"W
DFO(6605682-01)

4011 - Approaches to / Approches à Bay of Fundy / Baie de Fundy - New Edition - 03-JAN-2003 - NAD 1983

08-MAY-2026

LNMD. 17-APR-2026

Delete private yellow ODAS/SADO lighted pillar buoy FI(5) Y 20s, marked
4400490
(See Chart 1, Q58)

44°39'53.4"N 066°21'52.3"W
DFO(6312180-01)

4012 - Yarmouth to / à Halifax - New Edition - 14-FEB-2003 - NAD 1983

08-MAY-2026

LNMD. 20-MAR-2026

Delete private yellow ODAS/SADO lighted pillar buoy FI(5) Y 20s, marked
4400490
(See Chart 1, Q58)

44°39'53.4"N 066°21'52.3"W
DFO(6312180-01)

4115 - Passamaquoddy Bay and / et St. Croix River - New Edition - 24-FEB-2012 - World Geodetic System 1984

22-MAY-2026

LNMD. 21-NOV-2025

Amend vertical clearance of 21 metres, to read 11 metres
(See Chart 1, D22)

45°01'47.2"N 066°57'01.3"W
DFO(6312185-01)

Amend	vertical clearance of 41 metres, to read 20 metres (See Chart 1, D22)	45°02'20.8"N 066°56'04.0"W <i>DFO(6312185-02)</i>
Amend	vertical clearance of 39 metres, to read 18 metres (See Chart 1, D22)	45°02'37.2"N 066°55'05.4"W <i>DFO(6312185-03)</i>
Add	vertical clearance of 22 metres (See Chart 1, D22)	45°03'03.1"N 066°54'35.0"W <i>DFO(6312185-04)</i>
Delete	vertical clearance of 42 metres (See Chart 1, D22)	45°03'35.2"N 066°54'14.4"W <i>DFO(6312185-05)</i>
4118 - St. Marys Bay - New Edition - 13-NOV-1998 - NAD 1983		
29-MAY-2026		LNMD. 20-MAR-2026
Add	wreck, least depth unknown, with legend PA Rep (2023) (See Chart 1, K29, B7, I3)	44°16'24.9"N 066°28'44.9"W <i>DFO(6312188-01)</i>
4203 - Halifax Harbour: Black Point to / à Point Pleasant - New Edition - 28-DEC-2018 - NAD 1983		
15-MAY-2026		LNMD. 15-AUG-2025
Add	fish haven (See Chart 1, K46.1)	joining 44°36'28.4"N 063°30'27.1"W 44°36'27.9"N 063°30'21.6"W 44°36'39.0"N 063°30'19.7"W 44°36'39.5"N 063°30'25.2"W and 44°36'28.4"N 063°30'27.1"W <i>DFO(6312182-01)</i>
4235 - Sheet Harbour - New Edition - 28-APR-2000 - NAD 1983		
29-MAY-2026		LNMD. 21-MAR-2025
Add	overhead power cable with vertical clearance of 7.7 metres (See Chart 1, D22, D27)	between 44°55'13.2"N 062°30'58.8"W and 44°55'11.0"N 062°30'51.8"W <i>DFO(6312187-01)</i>
4491 - Malpeque Bay - New Edition - 13-DEC-2002 - NAD 1983		
15-MAY-2026		LNMD. 07-FEB-2025
Delete	depth of 13 feet (See Chart 1, I10)	46°35'24.6"N 063°50'15.8"W <i>DFO(6312179-01)</i>
Delete	depth of 16 feet (See Chart 1, I10)	46°35'30.5"N 063°50'10.1"W <i>DFO(6312179-02)</i>
Add	depth of 12 feet (See Chart 1, I10)	46°35'30.4"N 063°50'14.2"W <i>DFO(6312179-03)</i>
4679 - Hawkes Bay, Port Saunders, Back Arm - New Edition - 29-NOV-2002 - NAD 1983		
29-MAY-2026		LNMD. 13-FEB-2026
Amend	Robinson I to read Arctic I	50°36'15.3"N 057°16'08.7"W <i>DFO(6312191-01)</i>

4679 - Hawkes Harbour - New Edition - 29-NOV-2002 - NAD 1983

29-MAY-2026

LNMD. 13-FEB-2026

Amend Robinson I to read Arctic I

50°36'11.7"N 057°15'54.9"W
DFO(6312191-01)

4680 - Hawkes Bay to / à Ste Geneviève Bay including / y compris St. John Bay - New Edition - 07-NOV-2003 - NAD 1983

29-MAY-2026

LNMD. 30-MAY-2025

Amend Robinson I to read Arctic I

50°36'20.5"N 057°15'32.3"W
DFO(6312191-01)

4830 - Great Bay de l'Eau and Approaches / et les approches - New Edition - 08-NOV-2002 - NAD 1983

29-MAY-2026

LNMD. 19-MAR-2021

Amend FI 3s17m to read FI 5s17m against light
(See Chart 1, P16)

47°24'13.6"N 055°35'02.0"W
(N2024158) LL(120) DFO(6312183-01)

Add subsurface ocean data acquisition system ODAS/SADO with known
depth of 45 metres
(See Chart 1, L25)

47°22'55.0"N 055°38'41.8"W
DFO(6312183-02)

4957 - Havre-Aubert - New Edition - 02-JAN-2015 - NAD 1983

22-MAY-2026

LNMD. 03-JUN-2022

Amend 1,2m (2016) to read 1,4m (2025)
(See Chart 1, I22)

47°14'02.9"N 061°49'45.9"W
DFO(6411387-01)

Add depth of 4,5 metres
(See Chart 1, I10)

47°14'06.7"N 061°49'38.2"W
DFO(6411387-02)

Delete depth of 3,5 metres
(See Chart 1, I10)

47°14'06.5"N 061°49'36.6"W
DFO(6411387-03)

Add depth of 1,6 metres
(See Chart 1, I10)

47°14'06.6"N 061°49'36.5"W
DFO(6411387-04)

4958 - Cap-aux-Meules et/and Havre-aux-Maisons - New Chart - 01-NOV-2024 - World Geodetic System 1984

08-MAY-2026

LNMD. 16-MAY-2025

Delete depth of 6,8 metres
(See Chart 1, I10)

47°22'48.3"N 061°51'15.6"W
DFO(6411386-01)

Add depth of 6,4 metres
(See Chart 1, I10)

47°22'48.2"N 061°51'15.2"W
DFO(6411386-02)

Delete depth of 6,8 metres
(See Chart 1, I10)

47°22'29.4"N 061°51'07.1"W
DFO(6411386-03)

Add depth of 6,5 metres
(See Chart 1, I10)

47°22'29.5"N 061°51'06.9"W
DFO(6411386-04)

4969 - Île Mistanoque à/to Îles Mack - New Chart - 13-NOV-2020 - NAD 1983
01-MAY-2026

LNMD. 26-DEC-2025

Delete legend BELL against buoy STAUG

51°10'35.8"N 058°18'10.8"W
(Q2026008) LL(1539.15) DFO(6411377-01)

Section 3: Radio Aids to Marine Navigation Corrections

***519/26 Radio Aids to Marine Navigation 2026 (Atlantic, St. Lawrence, Great Lakes, Lake Winnipeg, Arctic and Pacific)**

Page 3-1

AMEND AS FOLLOWS:

Part 3 Vessel Traffic Services

The purpose of this Part is to describe to mariners the reporting procedures to be followed by vessels ~~when within or~~ **that are** about to enter, **leave or proceed within** a Vessel Traffic Services (VTS) Zone in Canada. If a vessel enters a VTS Zone from outside Canadian waters, the master must ensure that a Sailing Plan is submitted at least 24 hours before entering Canadian waters. Additionally, within Canadian waters, there are reporting requirements based on geographical location, as set forth in the [Vessel Traffic Services Zone Regulations \(VTSZ Regulations SOR 2025-275\)](#), its applicable Schedules, and [Navigation Safety Regulations, 2020](#) (NSR, 2020).

Page 3-3

ADD AS FOLLOWS:

3.4 Standard Vessel Traffic Service Reporting Template

The following is the Standard VTS Reporting template for all VTS Reports, with the requirement to complete applicable designators depending on the type of VTS Report.

Designator	Function	Information Required
A	Vessel Identity	Vessel name, state flag, call sign, IMO ship identification number, Maritime Mobile Service Identity (MMSI) number
B	Time of Report	A 6-digit group (first two digits day of month, last four digits hours and minutes) in UTC (unless transiting in only one Time Zone)
C	Position (latitude and longitude)	A 4-digit group giving latitude in degrees and minutes suffixed with N (north) or S (south) and a 5-digit group giving longitude in degrees and minutes suffixed with E (east) or W (west)
D	Position (geographical)	True bearing (first 3 digits) and distance in nautical miles from a clearly identified landmark
E	Vessel's Course	A 3-digit group (true course)
F	Vessel's Speed	A 3-digit group in knots and tenths of knots
G	Last Port	Name of last port of call
H	Entry/Departure	Date/time (as expressed in (B)), and entry or departure (as expressed in (C) or (D))

Notices to Mariners – Monthly Eastern Edition
Section 3: Radio Aids to Marine Navigation Corrections

I	Destination and ETA	Name of port and expected date/time of arrival (as expressed in (B))
J	Pilot	State whether a pilot is on board or date/time (as expressed in (B)) when anticipated to board
K	Exit	Date/time (as expressed in (B)) and point of exit (as expressed in (C) or (D)) or arrival at the vessel's destination
L	Route	Intended track
M	Radiocommunications	State in full names of stations/frequencies guarded
N	Next Report	Date/time (as expressed in (B)) and/or position (as expressed in (C) or (D)) of next report
O	Draught	4-digit group giving metres and centimetres of maximum present static draught
P	Cargo	Brief details of cargo and details of any dangerous cargoes, as well as harmful substances and gases that could endanger persons or the environment (pollutants) (<i>see detailed reporting requirements</i>)
Q	Defect, Damage, Deficiency, Limitations	Brief details of defects, damage, deficiencies, or other limitations (<i>see detailed reporting requirements</i>)
R	Pollution, Dangerous Goods Lost Overboard	Brief details of type of pollution (oil, chemicals, etc) or dangerous goods lost overboard including the position (as expressed in (C) or (D)) (<i>see detailed reporting requirements</i>)
S	Weather	Brief details of weather and sea conditions (including ice) prevailing
T	Agent	Details of name and particulars of vessel's authorized representative or owner, or both, for provision of information (<i>see detailed reporting requirements</i>)
U	Vessel size and type	Details of length, breadth, tonnage, and type, etc., as required
V	Medic	Brief details of doctor, physician's assistant, nurse, or personnel with medical training
W	Persons on Board	State number of persons on board
X	Remarks	Any other information (<i>see detailed reporting requirements</i>)
Y	Relay	Request to relay report to another system
Z	End of Report	No further information required

Page 3-5

AMEND AS FOLLOWS:

3.5.2.1 Sailing Plan (SP) - 24 hour report (only applicable to vessels as described in Section 3.5.1)

- a) 24 hours if entering a VTS Zone from outside of Canadian waters, including Alaska, or as soon as feasible if the estimated time of arrival of the vessel is less than 24 hours after the time the vessel departed from their last port of call.
- b) All designators from the Standard VTS Reporting Template (Section 3.4 of this publication) that are listed in the Collaborative Vessel Management System form must be answered on the ~~Standard VTS Reporting template (Section 3.4 of this publication).~~
- c) All time references are to be in Coordinated Universal Time (UTC), unless transiting in only one Time Zone.
- d) The Collaborative Voyage Management System must be used to obtain and submit the 24 hour report Sailing Plan. If experiencing difficulty, contact:

Page 3-7

DELETE AS FOLLOWS:

3.5.2.2.3 SP – Departing berth in Western VTS Zone

- a) At least 15 minutes before the vessel departs from a berth within a VTS zone.
- b) The SP must include the following designators from the Standard VTS Reporting template: [A], [B], [C] or [D], [I], [L], [N], [P], [Q], [R], ~~[X]~~

Page 3-31

AMEND AS FOLLOWS:

3.6.2.1 Sailing Plan (SP) - 24 hour report

- a) 24 hours if entering a VTS Zone from outside of Canadian waters, or as soon as feasible if the estimated time of arrival of the vessel is less than 24 hours after the time the vessel departed from their last port of call.
- b) All designators from the Standard VTS Reporting Template (Section 3.4 of this publication) that are listed in the Collaborative Vessel Management System form must be answered on the ~~Standard VTS Reporting template (Section 3.4 of this publication).~~
- c) All time references are to be in Coordinated Universal Time (UTC), unless transiting in only one Time Zone.
- d) The Collaborative Voyage Management System must be used to obtain and submit the 24 hour report Sailing Plan. If experiencing difficulty, contact:

Page 3-35

AMEND AS FOLLOWS:

3.7.2.1 Sailing Plan (SP) - 24 hour report (only applicable to vessels as described in Section 3.5.1)

- a) 24 hours if entering a VTS Zone from outside of Canadian waters, or as soon as feasible if the estimated time of arrival of the vessel is less than 24 hours after the time the vessel departed from their last port of call.
- b) All designators from the Standard VTS Reporting Template (Section 3.4 of this publication) that are listed in the Collaborative Vessel Management System form must be answered ~~on the Standard VTS Reporting template (Section 3.4 of this publication).~~
- c) All time references are to be in Coordinated Universal Time (UTC), unless transiting in only one Time Zone.
- d) The Collaborative Voyage Management System must be used to obtain and submit the 24 hour report Sailing Plan. If experiencing difficulty, contact

Page 3-36

ADD AS FOLLOWS:

3.7.2.2.1 SP – Entering a local Eastern VTS Zone

- a) At least 15 minutes before the vessel enters a local Eastern VTS Zone.
- b) The SP must include the following designators from the Standard VTS Reporting template:
[A], [B], [C] or [D], [H], [I], [N], [P], [Q], [R], [T]

(Note: This report is not required when the vessel has previously obtained a clearance as part of Section 3.6.2.1 or 3.7.2.1 of this publication).

Page 3-36

AMEND AS FOLLOWS:

3.7.2.2.3 SP – Departing berth in Local Eastern VTS Zone

- a) At least 15 minutes before the vessel departs from a berth within a VTS zone.
- b) The SP must include the following designators from the Standard VTS Reporting template:
[A], [B], [C], ~~or~~ [D], ~~[E]~~, [I], [O], [P], [Q], [R]

Page 3-65

AMEND AS FOLLOWS:

3.8.2.1 Sailing Plan (SP) - 24 hour report

- a) 24 hours when entering the Northern VTS Zone from outside of Canadian waters, or as soon as feasible if the estimated time of arrival of the vessel is less than 24 hours after the time the vessel departed from their last port of call.
- b) All designators from the Standard VTS Reporting Template (Section 3.4 of this publication) that are listed in the Collaborative Vessel Management System form must be answered ~~on the Standard VTS Reporting template (Section 3.4 of this publication).~~
- c) All time references are to be in Coordinated Universal Time (UTC), unless transiting in only one Time Zone.
- d) The Collaborative Voyage Management System must be used to obtain and submit the 24 hour report Sailing Plan. If experiencing difficulty, contact:

Page 3-74

ADD AS FOLLOWS:

3.9.3.4.1 SP – Entering Sarnia VTS Zone and Areas

- a) At least 15 minutes before the vessel enters the Sarnia VTS Zone and Areas.
- b) The SP must include the following designators from the Standard VTS Reporting template:
[A], [B], [C] or [D], [H], [I], [N], [P], [Q], [R], [T]

Page 3-74

ADD AS FOLLOWS:

3.9.3.4.3 SP – Departing Berth in Sarnia VTS Zone and Areas

- a) At least 15 minutes before the vessel departs from a berth within a VTS zone.
- b) The SP must include the following designators from the Standard VTS Reporting template:
[A], [B], [C] or [D], [H], [I], [N], [P], [Q], [R], [T]

Section 4: Canadian Sailing Directions Corrections

The following **Canadian Sailing Directions** volumes have recently been updated on the [Canadian Hydrographic Service website](#).

No.	Title
Atlantic Coast	
ATL 101	Newfoundland, Northeast and East Coasts
ATL 105	Cape Canso to Cape Sable (including Sable Island)
ATL 111	St. Lawrence River, Île Verte to Québec and Fjord du Saguenay
Central Canada	
CEN 302	Lake Ontario
Pacific Coast	
PAC 201	Juan de Fuca Strait and Strait of Georgia
PAC 202	Discovery Passage to Queen Charlotte Strait and West Coast of Vancouver Island
PAC 203	Cape Caution to Stewart and Haida Gwaii
Northern Canada	
ARC 401	Hudson Strait, Hudson Bay and Adjoining Waters
ARC 403	Western Arctic
ARC 404	Great Slave Lake and Mackenzie River

Each volume includes a section entitled “Record of Changes” which lists all updates that are incorporated during the current calendar year.

Section 5: List of Lights, Buoys and Fog Signals Corrections

The amendments are highlighted and deletions are crossed out. For general and region-specific information on the List of Lights, click on the following links: [Newfoundland and Labrador Coast](#), [Atlantic Coast](#), [Inland Waters](#), [Pacific Coast](#) and [Arctic Coast](#).

No. ----- Intl No.	Name ----- RACON	Location ----- Latitude N. Longitude W.	Light Characteristics	Focal Height Above Water (m)	Nominal Range (NM)	Description ----- Height of Structure Above Ground Level (m)	Remarks ----- Audible Signals ----- AIS
--------------------------	------------------------	--	--------------------------	--	--------------------------	--	---

NEWFOUNDLAND AND LABRADOR COAST

CAPE RACE TO ST. SHOTT'S (LL 1 – 7.4)

5 H0442	Powles Head Light Station	Trepassey, Southern Avalon. 46 41 25.0 053 24 05.9	FI W 10s	30.8	22	Red and white cylindrical tower. 2.4	Year round. Flash 0.2 s; eclipse 9.8 s. Fog Horn Blast 4 s; sil. 56 s.
------------	----------------------------------	---	----------	------	----	---	--

WEST COAST (LL 173 – 208.06)

193.7	Woods Island Harbour light buoy XWH2	49 05 52.2 058 13 36.9	FI R 4s	Red, spar, marked "XWH2".	Seasonal.
193.83	Frenchman's Cove Wharf Light	49 03 30.2 058 10 48.3	FI R 5s	3	Pipe tower. 5.3	Seasonal. Flash 1 s; eclipse 4 s.

WHITE BAY (LL 235 – 269.2)

257.31	Fleur de Lys (Welsh Point) light buoy KF2	Harbour. 50 07 03.0 056 07 33.7	Q R 1s	Red, spar, marked "KF2".	Seasonal.
257.4	Fleur de Lys (White Bay) light buoy KF3	Harbour. 50 07 02.3 056 07 38.9	Q G 1s	Green, spar, marked "KF3".	Seasonal.

BONAVISTA BAY (LL 396 – 449.5)

442.513	Tilley's Rock light buoy JS3	48 27 13.1 053 33 12.0	FI G 4s	Green, spar, marked "JS3".	Seasonal.
448.3	Red Rock Shoal light buoy JB3	48 40 14.0 053 07 30.1	FI G 4s	Green, pillar, marked "JB3".	Seasonal.

ATLANTIC COAST

PRINCE EDWARD ISLAND (LL 942 – 1084.7)

1037	North Cape Reef North Cardinal light and bell buoy DS	N. of North Cape. 47 05 00.0 064 00 03.0	Q W 1s	Black-yellow, pillar, marked "DS".	Seasonal. Audible signal: Bell
------	---	--	--------	-------	-------	------------------------------------	--

GULF OF ST. LAWRENCE (LL 1477.5 – 1617)

1496.2	Havre de Cap-aux-Meules YD4 (V-AIS)	47 22 35.8 061 51 06.4	Year round. Virtual AIS AtoN MMSI: 993166033 Starboard hand mark
1496.4	Cap-aux-Meules light buoy YD4						Delete from list.

Notices to Mariners – Monthly Eastern Edition
Section 5: List of Lights, Buoys and Fog Signals Corrections

No. ----- Intl No.	Name ----- RACON	Location ----- Latitude N. Longitude W.	Light Characteristics	Focal Height Above Water (m)	Nominal Range (NM)	Description ----- Height of Structure Above Ground Level (m)	Remarks ----- Audible Signals ----- AIS
1514.2 H1884	Phare de Pointe- Carleton	N. shore of the island. 49 43 53.6 062 56 33.4	Fl G 6s	38.4	5	White octagonal tower with red top.	Seasonal. Flash 1 s; eclipse 5 s.

INLAND WATERS

LAKE ONTARIO (LL 403.4 – 551)

444	Trumpour Point fairway light buoy Q						Delete from list.
469	Belleville Harbour light buoy Q54						Delete from list.
469.1	Belleville Bifurcation light buoy QM	44 08 57.7 077 22 27.4	Fl(2+1) R 6s	Red-green-red, spar, marked "QM".	Seasonal (in place year round).
470	Belleville	Harbour breakwall. 44 09 11.6 077 22 32.2	Iso G 4s	9.0	4	White cylindrical tower with green upper portion. 7.0	Seasonal.