



Fisheries and Oceans
Canada

Pêches et Océans
Canada

Canadian
Coast Guard

Garde côtière
canadienne

Notices to Mariners

Edition No. 05/2024
May 31, 2024



Safety First, Service Always

Monthly Eastern Edition

Canada 

Notices to Mariners – Monthly Eastern Edition
Edition No. 05/2024

Aussi disponible en français :
Avis aux navigateurs – Édition mensuelle de l'Est
Édition n° 05/2024

Published under the Authority of:

Canadian Coast Guard Programs
Aids to Navigation and Waterways
Fisheries and Oceans Canada
Montreal, QC H2Y 2E7

For more information, contact DFO.Notmar-Notmar.MPO@dfo-mpo.gc.ca.

© His Majesty the King in Right of Canada,
as represented by the Minister of Fisheries, Oceans
and the Canadian Coast Guard, 2024.

Cat. No. Fs152-8E-PDF (Electronic PDF, English)
ISSN 2817-0075

Cat. No. Fs152-8F-PDF (Electronic PDF, French)
ISSN 2817-0083

A web version is available here:

[Notices to Mariners – Monthly Editions](#) (English)

[Avis aux navigateurs – Publications mensuelles](#) (French)

Explanatory Notes – Notices to Mariners (NOTMAR)

Geographical positions refer directly to the graduations of the largest scale Canadian Hydrographic Service chart (unless otherwise indicated).

Bearings refer to the true compass and are measured clockwise from 000° (North) clockwise to 359°; those relating to lights are from seaward.

Visibility of lights is that in clear weather.

Depths - The units used for soundings (metres, fathoms or feet) are stated in the title of each chart.

Elevations are normally given above Higher High Water, Large Tide (unless otherwise indicated).

Distances may be calculated as follows:

- 1 nautical mile = 1,852 metres (6,076.1 feet)
- 1 statute mile = 1,609.3 metres (5,280 feet)
- 1 metre = 3.28 feet

Temporary and Preliminary Notices to Mariners – Section 1A of *Notices to Mariners*

These notices are indicated by a (T) or a (P), respectively. Please note that nautical charts are not amended by the Canadian Hydrographic Service for temporary (T) and preliminary (P) notices. It is recommended that mariners chart these corrections in pencil. For the list of charts affected by (T) & (P) notices, please refer to the current [Notices to Mariners - Monthly Summary of Temporary and Preliminary Notices](#) publication.

Suggestions and Corrections Form

This form is specifically for suggestions and corrections to Notices to Mariners publications. It is available [online](#) and also in [fillable PDF format](#) included with the monthly publication ZIP file.

To submit comments and suggestions on possible improvements to the various publications and services: DFO.Notmar-Notmar.MPO@dfo-mpo.gc.ca.

To report chart discrepancies and/or corrections to the *Canadian Sailing Directions* booklets: Fill out the [Marine Information Reporting Form](#) and/or email chsinfo@dfo-mpo.gc.ca.

To report emergencies or navigational hazards: [Contact your nearest MCTS centre](#)

- VHF channel 16 (156.8 MHz)
- MF/HF frequency 2182 kHz/4125 kHz (where available)
- *16 on a cellphone (where available)

NOTMAR Website – Monthly Editions, Chart Corrections and Chart Patches

The NOTMAR website allows users to access the [monthly publications](#), [chart corrections](#), and [chart patches](#).

Users can subscribe for free to the [email notification service](#) to receive notifications when charts of interest are updated, including their patches, as well as when a new Monthly Edition of *Notices to Mariners* is published.

In addition, the monthly publication and related files to download, such as chart patches, can be obtained all together through the download of a single ZIP file.

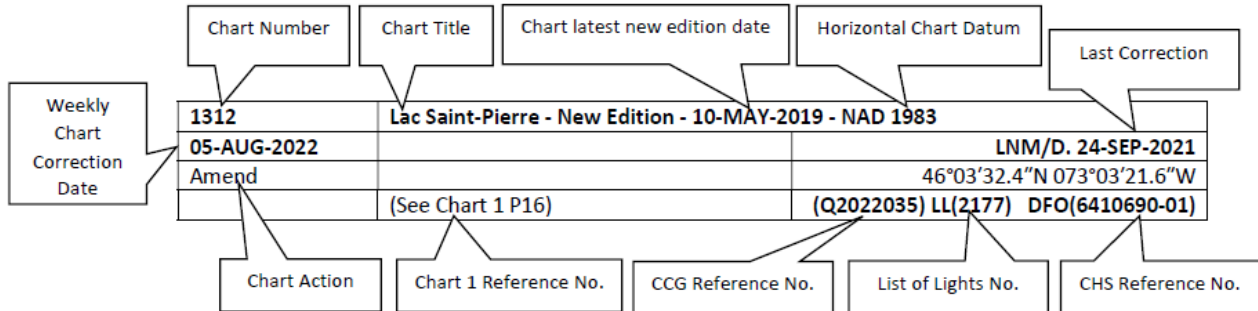
Explanatory Notes – Canadian Hydrographic Service (CHS)

Chart Corrections – Section 2 of *Notices to Mariners*

Corrections to nautical charts will be listed in numerical order by chart number. Each chart correction listed applies only to that particular chart. Related charts, if any, will have their own specific correction listed separately.

Users should also refer to CHS *Chart 1: Symbols, Abbreviations and Terms* for additional information pertaining to the correction of charts.

The illustration below describes the elements that will comprise a typical Section 2 chart correction:



The last correction number is identified with the **LNMD** or **Last Notice to Mariners Number / Date**.

Mariners are advised that only the most critical changes that directly affect safety to navigation are issued in “Section 2 – Chart Corrections.” This limitation is required to ensure that charts remain as clear and easy to read as possible. As a result, mariners may see minor discrepancies of a non-critical nature between information in official publications. For example, a small change in the nominal range or focal height of a light may not result in the production of a chart correction in *Notices to Mariners*, but may result in a correction in the [List of Lights, Buoys and Fog Signals](#) publication.

Note: In the case of a discrepancy between information provided on CHS charts relating to aids to navigation, and the *List of Lights, Buoys and Fog Signals* publication, the latter shall be deemed as containing the most up-to-date information.

Canadian Nautical Charts & Publications

A source list of Canadian nautical charts and publications is published in Notice No. 14 of the *Notices to Mariners Annual Edition 2024*. The source supply and the prices effective at the time of printing are listed. For current chart edition dates, please refer to the [Canadian Hydrographic Service – List of Charts](#).

Explanatory Notes – Marine Communications and Traffic Services (MCTS)

Navigational Warnings / Notices to Shipping

The Canadian Coast Guard (CCG) is implementing a number of changes to the aids to navigation system in Canada.

These changes are advertised as Navigational Warnings, formerly called Notices to Shipping¹, that are broadcast by the CCG, and are then followed up with Notices to Mariners, then charts are updated by hand correction, reprints or new editions.

Mariners are advised that all relevant Navigational Warnings (NAVWARN) should be kept until superseded by Notices to Mariners or through revised charts issued by the Canadian Hydrographic Service (CHS).

NAVWARN are accessible on the applicable regional page on the [CCG Navigational Warnings](#).

CHS is reviewing the impact of these changes with CCG and together are preparing an action plan on the issuing of chart revisions.

For further information, contact your regional NAVWARN Issuing Desk.

<p>Atlantic Region (North) *Port aux Basques MCTS Centre</p> <p>“N” Series NAVWARN</p> <p>Canadian Coast Guard 49 Stadium Rd. P.O. Box 99 Port aux Basques, NL A0M 1C0</p> <p>Telephone: 709-695-2168 or 1-800-563-9089 Facsimile: 709-695-7784</p> <p>Email: NAVWARN.MCTSPortAuxBasques@innav.gc.ca</p>	<p>Central Region *Prescott MCTS Centre</p> <p>“Q” and “C” Series NAVWARN</p> <p>Canadian Coast Guard 401 King Street West P.O. Box 1000 Prescott, ON K0E 1T0</p> <p>Telephone: 613-925-0666 Facsimile: 613-925-4519</p> <p>Email: NAVWARN.MCTSPrescott@innav.gc.ca</p>
<p>Atlantic Region (South) *Sydney MCTS Centre</p> <p>“M” Series NAVWARN</p> <p>Canadian Coast Guard 1190 Westmount Road Sydney, NS B1R 2J6</p> <p>Telephone: 902-564-7751 or 1-800-686-8676 Facsimile: 902-564-7662</p> <p>Email: NAVWARN.MCTSSydney@innav.gc.ca</p>	<p>Arctic Region *Iqaluit MCTS Centre <i>Operational from approximately mid-May until late December.</i></p> <p>“A” Series NAVWARN</p> <p>Canadian Coast Guard P.O. Box 189 Iqaluit, NU X0A 0H0</p> <p>Telephone: 867-979-5269 Facsimile: 867-979-4264</p> <p>Email: NAVWARN.MCTSIqaluit@innav.gc.ca</p>

*Service available in English and in French.

¹ The expression “Notice to Shipping” was changed to “Navigational Warning” in January 2019.

Table of Contents

Section 1: General and Safety Information	1
*505/23 Canadian Hydrographic Service – Magnetic Declination Calculations	1
*1207/23 Canadian Hydrographic Service – Inappropriate Geographical Names Review Process.....	1
*401/24 Protecting the North Atlantic Right Whale: Speed Restriction Measures in the Gulf of St. Lawrence	1
*406/24 Saguenay–St. Lawrence Marine Park - Beluga Whale Protection: Slowdown Area at the Mouth of the Saguenay Fjord and Area Closure at Baie Sainte-Marguerite	9
*407/24 Saguenay – St. Lawrence Marine Park and Surrounding Waters – Whale Protection	12
*501/24 Canadian Hydrographic Service – Electronic Navigational Charts.....	13
*502/24 Transport Canada - Ship Safety Bulletin #11/2024.....	18
*503/24 Canadian Coast Guard Publication - Amendments to the <i>Notices to Mariners Annual Edition 2024</i> - Section A, Notice 5: General Guidelines for Aquatic Species at Risk and Important Marine Mammal Areas	19
*504/24 Canadian Coast Guard Publication - Amendments to the <i>Notices to Mariners Annual Edition 2024</i> - Section A, Notice 5A: General Regulatory Requirements for all <i>Oceans Act</i> Marine Protected Areas.....	19
*506/24 Lac Memphrémagog – Unlit Buoys Permanently Changed	19
*507/24 Port Severn to/à Parry Sound – Unlit Buoy Permanently Established	20
*508/24 Harbours on the North Shore / Hâvres sur la Côte Nord – Unlit Buoys Repositioned	20
*509/24 Pugwash Harbour, Wallace Harbour, Amet Sound and Approaches / et les Approches – Unlit Buoy Shape Changed	20
*510/24 Havre-Aubert – Period of Service Changed	20
Section 1A: Temporary and Preliminary Notices	21
Reminder – Comment Period for Active Preliminary Notices	21
*512(P)/24 Hawkes Bay, Port Saunders, Back Arm – Fog Signal to be Discontinued.....	21
*513/24 Murray Canal to Healey Falls Locks / Murray Canal aux Écluses de Healey Falls – Construction Operations Completed	22
Section 2: Chart Corrections	23
Section 3: Radio Aids to Marine Navigation Corrections	36
No corrections for this section.	36
Section 4: Canadian Sailing Directions Corrections	37
Section 5: List of Lights, Buoys and Fog Signals Corrections	38

Numerical Index of Canadian Charts Affected

This numerical index lists all nautical charts mentioned in this monthly edition of Notices to Mariners. Only charts appearing in Section 2 of this publication require a chart correction. The appearance of charts in all other sections, particularly those related to the correction of other nautical publications, is included here for reference.

Chart No.	Pages	Chart No.	Pages	Chart No.	Pages
1233	23	4404	44	4864	39, 40
1234	23, 24	4425	20, 44	4881	31
1315	24	4430	46	4886	40
1316	24, 46	4432	30	4905	31
1320	25, 26	4459	30	4906	44
1360	19	4467	45	4909	32, 45
1430	47	4485	30	4937	20
1439	26	4492	45	4950	45
1513	26, 27	4521	39	4957	20, 46
2021	22	4522	39	5058	32, 33
2121	27	4523	21, 39	5390	50
2181	27, 47	4530	41	5449	50
2202	20	4583	39	5450	50
2241	47	4585	39	5452	51
2273	47	4624	38	5457	50
2314	47	4625	38	5458	50
2315	27	4642	21, 38	5620	52
4001	27	4661	30	5630	52
4003	28	4668	38	5640	33, 34, 52
4011	28, 43	4679	21, 38	5641	52
4021	28	4682	38	5642	52
4022	38, 45	4821	39	5707	50
4023	28	4826	30, 31	6021	34, 47
4114	43	4841	38	6022	48
4116	43	4846	43	6023	48
4118	28, 43, 44	4847	31, 42	6035	48
4230	29	4848	31	6100	46
4233	44	4849	42	6215	48
4235	29	4850	41, 42	6240	34
4237	29	4851	42	6241	34, 49
4243	29	4852	41	6242	48
4244	29	4855	41	6248	48
4320	29	4857	41	6249	48
4331	43	4858	41	6251	35
4379	44	4862	40, 41	6258	49
4385	29	4863	39, 40	6268	49

Chart No.	Pages	Chart No.	Pages	Chart No.	Pages
6416	35	8005	35		
6430	49	14781 (U.S.)	46		
7125	51				
7127	52				
7661	21				
7663	50				
7685	49, 50				

Section 1: General and Safety Information

***505/23 Canadian Hydrographic Service – Magnetic Declination Calculations**

(Recurrent publication of notice *505/23, originally published in the *Notices to Mariners – Monthly Eastern Edition 05/2023* publication.)

Mariners are advised that CHS has adopted the harmonized World Magnetic Model (WMM), as found on the NCEI/NOAA website. Old compass rose declination information on CHS navigational products can be updated using this website: <https://www.ngdc.noaa.gov/geomag/calculators/magcalc.shtml#declination>. While the differences in the model declinations are small each year, they can become more significant over a large period of time.

***1207/23 Canadian Hydrographic Service – Inappropriate Geographical Names Review Process**

(Recurrent publication of notice *1207/23, originally published in the *Notices to Mariners – Monthly Eastern Edition 12/2023* publication.)

The records of the Canadian Hydrographic Service could contain geographical names that may be considered inappropriate, offensive and derogatory. Geographical naming authorities are in the process of addressing many offensive place names, the review process is underway. For more information, about inappropriate geographical names, please see the [following announcement](#).

***401/24 Protecting the North Atlantic Right Whale: Speed Restriction Measures in the Gulf of St. Lawrence**

(Recurrent publication of notice *401/24, originally published in the *Notices to Mariners – Monthly Eastern Edition 04/2024* publication.)

Purpose

This bulletin describes the speed restriction zones that vessels must follow in the Gulf of St. Lawrence.

The Government of Canada has established these zones to reduce the risk of vessel colliding with North Atlantic right whales (NARW).

Background

Due to changing migration patterns of North Atlantic right whales and their increased presence in the Gulf of St. Lawrence, the Government of Canada has set seasonal speed restrictions in specific zones. These speed restrictions zones are defined as “static zones”, “dynamic shipping zones”, “seasonal management areas”, a “voluntary seasonal slowdown zone” and a “restricted area”. [See the map below for details](#).

Note: Vessels **must follow** Navigational Warnings outlining the speed restrictions. The *Interim Order for the Protection of North Atlantic Right Whales (Eubalaena Glacialis) in the Gulf of St. Lawrence, 2024* enables the issuance of Navigational Warnings (NAVWARNs) imposing speed restrictions and navigation restrictions.

Speed restriction zones are described in monthly Notices to Mariners (NOTMARs), which are published by the Canadian Coast Guard. The status of these zones is broadcasted through NAVWARNs, which are published by the Coast Guard’s Marine Communications and Traffic Services Centres.

Changes to speed restriction zones and measures

Based on consultations with industry and on scientific data, changes to the speed restriction zones will be effective from April 17th, 2024, while the restricted area will be implemented based on whale presence.

A voluntary seasonal slowdown of 10.0 knots over the ground spanning from Cabot Strait (a line running from Cape North NS to Cape Ray NL) to the eastern edge of dynamic shipping zone E will be implemented at the beginning and end of the North Atlantic right whale season (Spring and fall).

Please check the latest NAVWARN for all speed restrictions currently in effect.

Speed Restriction Measures for 2024

These restrictions will be in effect from **April 17 to November 15, 2024**.

Exceptions

The following exception will apply to **all** measures:

- a) a vessel in distress or providing assistance to a person or a vessel in distress;
- b) a government vessel being used
 - i. for law enforcement activities;
 - ii. for search and rescue operations; or
 - iii. to ensure the competency of the crew or the operational readiness of the vessel or crew with respect to such activities or operations.

Static zones

In the static zones, **all** vessels above **13 m** in length overall (LOA) must proceed at a speed of not more than 10.0 knots over the ground.

Exclusions

Air cushion vessels operated by or on behalf of the Government of Canada that are engaged in ice-clearing activities from April to June in and around Chaleur Bay are exempted when in operation.

36.57 m (20-fathom) shallow water protocol exclusion

Vessels engaged in any commercial fishing activity may proceed at a safe operational speed in waters not more than 36.57 m (20 fathom) deep within the static zones.

If a notice to fish harvesters and a NAVWARN state that at least one North Atlantic right whale has been detected in waters within a static zone or its associated buffer zone that are not more than 36.57m deep, the speed limit of 10.0 knot over the ground will apply in the concerned zone(s) to all vessels above 13m in length overall (LOA). The speed restriction will be in effect for 15 days after the day on which the whale was detected. The buffer zones associated with the static zones are located 5 miles north and south of their adjacent border in waters less than 36.57m deep.

Coordinates for the northern static zone:

- 50° 20' N 065° 00' W
- 49° 13' N 065° 00' W
- 48° 40' N 064° 13' W
- 48° 40' N 062° 40' W
- 48° 03' N 061° 07.5' W
- 47° 58.1' N 061° 03.5' W
- 48° 00' N 061° 00' W
- 49° 04' N 061° 00' W
- 49° 04' N 062° 00' W
- 49° 43' N 063° 00' W
- 50° 20' N 063° 00' W

Coordinates for the southern static zone:

- 48° 40' N 065° 00' W
- 48° 40' N 062° 40' W
- 48° 03' N 061° 07.5' W
- 47° 58.1' N 061° 03.5' W
- 47° 10' N 062° 30' W
- 47° 10' N 065° 00' W

Dynamic shipping zones

There are five dynamic shipping zones (DSZ) located in the routing systems north and south of Anticosti Island: A, B, C, D and E

Coordinates for the dynamic shipping zones:

Zone A

- 49° 41' N, 065° 00' W
- 49° 20' N, 065° 00' W
- 49° 11' N, 064° 00' W
- 49° 22' N, 064° 00' W

Zone B

- 49° 22' N, 064° 00' W
- 49° 11' N, 064° 00' W
- 48° 48' N, 063° 00' W
- 49° 00' N, 063° 00' W

Zone C

- 49° 00' N, 063° 00' W
- 48° 48' N, 063° 00' W
- 48° 24' N, 062° 00' W
- 48° 35' N, 062° 00' W

Zone D

- 50° 16' N, 064° 00' W
- 50° 00' N, 064° 00' W
- 49° 56' N, 063° 00' W
- 50° 16' N, 063° 00' W

Zone E

- 48° 35' N 062° 00' W
- 48° 24' N 062° 00' W
- 48° 03' N 061° 07.5' W
- 47° 58.1' N 061° 03.5' W
- 48° 00' N 061° 00' W
- 48° 10.5' N 061° 00' W

When a North Atlantic right whale is detected in a dynamic shipping zone or in the buffer zones, located 5 nautical miles south or 2.5 nautical miles from the eastern and western edges of the dynamic shipping zones:

- All vessels will be notified via a NAVWARN; and
- Vessels above **13 m** in length overall (LOA) must proceed at a speed of not more than 10.0 knots over the ground within that zone.

Even though dynamic shipping zones overlap with static zones, vessels can travel at a safe operational speed in dynamic shipping zones when they are not under speed restriction. Mariners must also keep in mind that North Atlantic right whales may be nearby.

Speed restrictions in the dynamic shipping zones

The detection of North Atlantic right whales in one or more dynamic shipping zone(s), or in their buffer zones, will trigger a speed restriction in the concerned zone(s). The speed restriction in the dynamic shipping zone(s) will be in effect for 15 days from the date of detection. In the event of a new North Atlantic right whale detection occurring in the last 7 days of the 15-day slowdown period, the speed restriction will be extended for an additional 15 days from the date of the new detection. This would continue until no NARW are detected.

When a NAVWARN is issued implementing a speed restriction in one or more dynamic shipping zone(s), vessels above **13 m** in length (LOA) must not exceed a speed of 10.0 knots over the ground. Within any dynamic zone that is not subject to a speed restriction, mariners may proceed at a safe operational speed. Mariners are encouraged to take into consideration the potential for their vessel striking North Atlantic right whales when considering a “safe operational speed” during navigation.

Seasonal management areas

Seasonal management area 1 (SMA-1) and seasonal management area 2 (SMA-2) are speed restriction areas located north and south of dynamic shipping zone E, respectively.

Within seasonal management areas, vessels above **13 m** in length (LOA):

- must restrict their speed so as not to exceed 10.0 knots over the ground from April 17th to June 25th, 2024; **and**
- are allowed to proceed at a safe operational speed from June 26th to November 15th, 2024, unless a North Atlantic right whale is detected. If a whale is detected, a speed restriction of 10.0 knots over the ground will be triggered for 15 days from the date of detection. In the event of a new North Atlantic right whale detection occurring in the last 7 days of the 15-day slowdown period, the speed restriction will be extended for an additional 15 days from the date of the new detection. This would continue until no North Atlantic right whales are detected.

Coordinates for the SMA-1:

- 49° 04' N 062° 00' W
- 49° 04' N 061° 00' W
- 48° 10.5' N 061° 00' W
- 48° 35' N 062° 00' W

Coordinates for the SMA-2:

- 48° 24' N 062° 00' W
- 48° 03' N 061° 07.5' W
- 47° 58.1' N 061° 03.5' W
- 47° 26.69' N 062° 00' W

Restricted area

In the summer months, an important proportion of the total North Atlantic right whale population gathers for feeding and surface activity near the [Shediac Valley](#). Since this makes the North Atlantic right whale more susceptible to vessel collisions, a mandatory restricted area will be implemented in and near the [Shediac Valley](#) and will come into force once 80% of the restricted area is closed to fishing for the season as per the [Department of Fisheries and Oceans' right whale closure protocol](#) or at the latest on June 19th, 2024. The restricted area will be lifted once the North Atlantic right whale detections decrease in the restricted area or at the latest on September 25th, 2024.

The size and location of the area are determined based on historical detection data of North Atlantic right whales. All necessary details can be found in the *Interim Order for the Protection of North Atlantic Right Whales (Eubalaena Glacialis) in the Gulf of St. Lawrence, 2024*. Triggering and lifting of the restricted area will be communicated to mariners through NAVWARNs and notices to fish harvesters.

Vessels above **13 m** in length (LOA) will be required to:

- avoid the area unless they are part of the exceptions listed in the Interim Order for the Protection of North Atlantic Right Whales (*Eubalaena Glacialis*) in the Gulf of St. Lawrence, 2024;
- transit the area at a speed not exceeding 8.0 knots over the ground if they are part of the exceptions.

The following exceptions will apply to the restricted area. The following listed vessels can travel through the area at not more than 8.0 knots over the ground:

- A vessel being used for commercial fishing;
- A vessel being used for fishing under the authority of a licence issued under the *Aboriginal Communal Fishing Licences Regulations*;
- A vessel being used for research purposes on behalf of the Government of Canada
- A vessel being used as part of the Department of Fisheries and Oceans' Marine Mammal Response Program to assist a marine mammal or sea turtle in distress or to access or retrieve a deceased marine mammal or sea turtle;
- A vessel authorized by the Government of Canada to retrieve or identify the location of abandoned or lost fishing gear;
- A vessel involved in pollution response operations;
- A vessel avoiding immediate or unforeseen danger;
- A vessel involved in research relating to right whales as part of a project that has received funding from the Government of Canada.

The following vessels can travel through the restricted area at a speed over 8.0 knots, but below 10.0 knots over the ground as required by the static speed restriction zone:

- A vessel being used by an employee of the Government of Canada or peace officer who is performing their duties.

Coordinates for the restricted area:

- 48°31.8' N 063°39.6' W
- 48°24.72' N 063°17.88' W
- 47°18.84' N 064°10.8' W
- 47°27.18' N 064°30.72' W

Inclement weather exception

Mariners will be notified in advance via a NAVWARN should the speed restriction status change in any zone or area, due to inclement weather.

Within any zone or area that is no longer subject to a speed restriction due to adverse weather conditions, mariners may proceed at a safe operational speed. Mariners are however encouraged to take into consideration the potential for their vessel striking North Atlantic right whales when considering a “safe operational speed” during navigation.

*Non-expected vessels are still prohibited from transiting through the restricted area.

Voluntary seasonal slowdown in Cabot Strait

To coincide with the North Atlantic right whales entering and exiting the Gulf of St. Lawrence in large numbers, a voluntary seasonal slowdown is being put in place in Cabot Strait from April 17th to June 25th, 2024, and from September 25th to November 15th, 2024.

- During these periods, vessels above 13 m in length (LOA) are requested to voluntarily reduce their speed as to not exceed 10.0 knots over the ground.

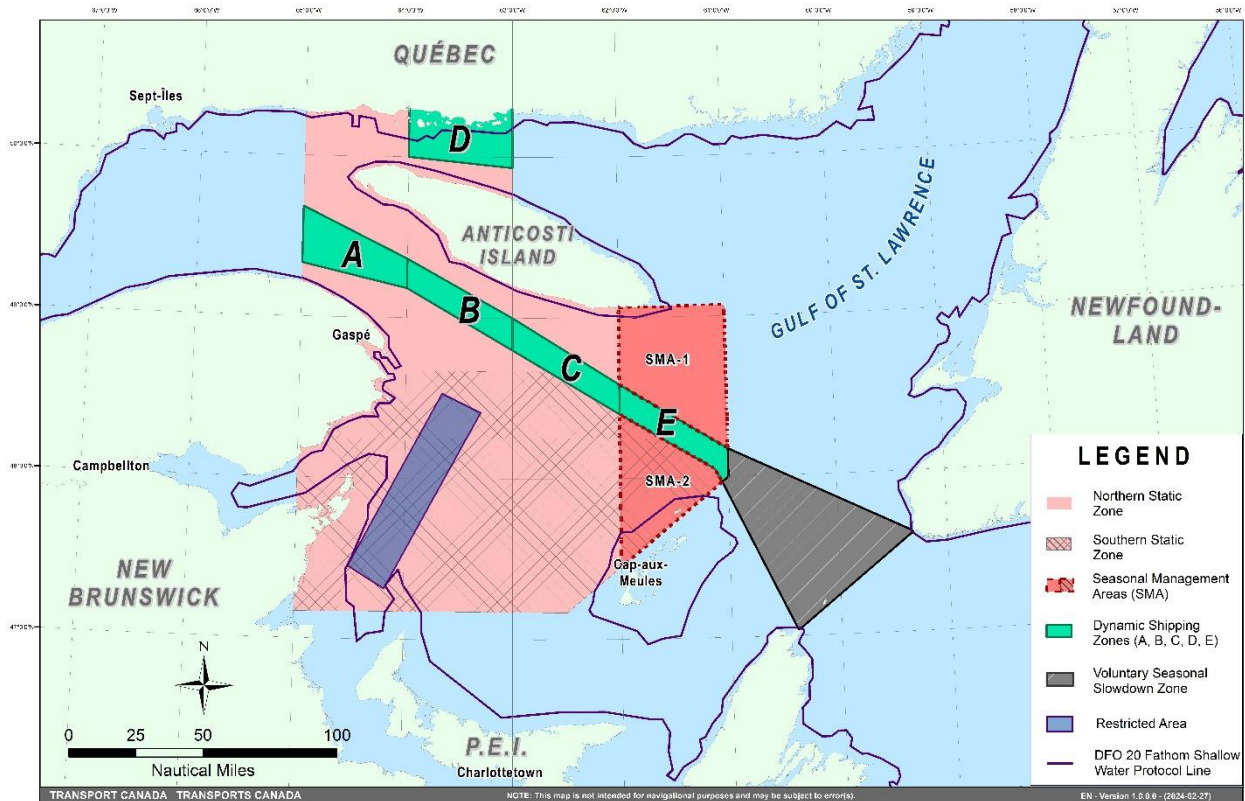
Voluntary seasonal slowdown zone coordinates:

- 48° 10.5' N 061° 00' W
- 47° 37.2' N 059° 18.5' W
- 47° 02' N 060° 23.7' W
- 47° 58.1' N 061° 03.5' W
- 48° 00' N 061° 00' W

Map of the Gulf of St. Lawrence

The following map shows

- the static zones (north and south), in pink;
- the dynamic shipping zones (A, B, C, D and E), in green;
- the seasonal management areas, in dark pink;
- the voluntary seasonal slowdown zone, in grey;
- the restricted area, in dark blue; and
- the 36.57 m (20 fathom) shallow water protocol line.



This map is for visual representation only and is not to be used for navigation or enforcement.

Roseway Basin – Area to be Avoided

The Roseway Basin, located approximately 20 nautical miles south of Cape Sable Island, Nova Scotia, is a critical habitat for North Atlantic right whales, which have been observed to gather in the area on a seasonal basis in Canadian waters. This critical habitat is also located near key shipping routes. In 2007, Canada, with the support of many groups with varied interests, proposed to the International Maritime Organization (IMO) the establishment of a seasonal Area to be Avoided in the Roseway Basin to protect North Atlantic right whales, which IMO accepted and adopted.

To reduce the risk of vessels colliding with North Atlantic right whales, it is recommended that vessels of 300 gross tonnages and more, in transit during the period of June 1 through December 31, avoid the Roseway Basin area. Smaller vessels are also encouraged to avoid passage through this area. If passage is necessary within the Area to be Avoided, it is recommended that all mariners decrease their vessel speed to no more than 10 knots, when safe to do so.

Roseway Basin coordinates:

- 43° 16' N 064° 55' W
- 42° 47' N 064° 59' W
- 42° 39' N 065° 31' W
- 42° 52' N 066° 05' W

NAVWARN broadcasts

The Canadian Coast Guard issues NAVWARNs:

- by radio broadcast; and
- online at [Canada's Maritime Information Portal](#) and its [Navigational Warnings](#) site.

Mariners must ensure they have accurate and up-to-date information about the protection of the North Atlantic right whale, as in all applicable NOTMARs and NAVWARNs.

For the North Atlantic right whale speed restrictions, the NAVWARN(s) currently in effect will be provided to vessels subject to the Vessel Traffic Services Zone Regulations or the Eastern Canada Vessel Traffic Services Zone Regulations:

Outbound vessels will receive NAVWARNs

- at Calling-in-Point 10 (St-Laurent); or
- upon a departure downstream from the Quebec pilot station (including the Saguenay River, Chaleur Bay, Miramichi Bay, etc.)

Inbound vessels will receive NAVWARNs

- when a clearance to enter Canadian waters is granted

Vessels in transit will receive NAVWARNs

- at the last reporting point prior to entering the mandatory speed restriction zones; and/or
- at 10 nautical miles before they enter the mandatory speed restriction zones

For those vessels not subject to the above-mentioned regulations, vessel operators are required to monitor broadcasts by the Canadian Coast Guard's Marine Communications and Traffic Services network for the most up to date information. For marine radio frequencies and broadcast times, information may be found in the [Radio Aids to Marine Navigation](#) publication.

Aids to navigation

The Canadian Coast Guard is currently testing virtual Automatic Identification System (AIS) aids to navigation (AIS AtoN) in specific areas. These aids notify mariners of a dynamic shipping zone and/or a seasonal management area subject to a speed restriction.

Each zone is delimited by four to six virtual AIS AtoN, which can be displayed on a ship's navigation equipment, such as

- Electronic Chart Display and Information System (ECDIS);
- Electronic Chart System (ECS);
- RADAR;
- Minimum Keyboard Display (MKD); and
- Electronic Nautical Chart (ENC).

The Canadian Coast Guard broadcasts the virtual AIS AtoN only when a speed restriction is in effect in one or more testing zones.

Mariners must select the virtual AIS AtoN symbol to view a message such as "SectA1 Spd Lim 10 kt." This message refers to a speed restriction in effect for a specific zone.

Note: This system is not the primary method of communicating this information.

Compliance and enforcement

Vessels must comply with the Interim Orders made pursuant to the *Canada Shipping Act, 2001*, and any NAVWARNs broadcasted and published by the Canadian Coast Guard relating to the Interim Orders, aimed at regulating the navigation for the purposes of protecting the North Atlantic right whales.

If a vessel does not comply with the Interim Orders or instructions in the NAVWARNs related to the Interim Orders, the vessel could face:

- administrative monetary penalties up to a maximum of CAN \$250,000; and/or
- penal sanctions under the *Canada Shipping Act, 2001* is liable on summary conviction to a fine of not more than CAN \$1,000,000 or to imprisonment for a term of not more than 18 months, or to both.

If a vessel appears to have violated the speed restriction, Transport Canada Marine Safety inspectors will review all information provided through AIS and seek an explanation from the master.

No exemptions to the speed restriction will be granted in advance. However, if a deviation from the speed restrictions is necessary for safety reasons, the following information must be entered into the bridge logbook:

- reason(s) for deviation;
- speed at which vessel is operated;
- latitude and longitude at time of deviation;
- time and duration of deviation; and
- master of the vessel shall sign and date the bridge logbook entry.

For any deviation, Transport Canada will review and consider reasons such as:

- navigating to ensure vessel safety;
- weather conditions;
- force majeure (unforeseeable circumstances); and
- responding to emergencies.

Report a North Atlantic right whale sighting

If you see live, free-swimming whales:

- Email: DFO.GLFWhales-BaleinesGLF.MPO@dfo-mpo.gc.ca
- When reporting sightings of North Atlantic right whales, you must include: GPS location (latitude and longitude), date and time of sighting, number of marine mammals, photograph(s)/video(s) collected and if possible, behavior of marine mammals observed (ex., feeding, travelling, diving).

If you see a North Atlantic right whale (and all other marine mammals) **entangled, injured or dead**, please document and report it immediately to the regional Response Network.

- When documenting you should collect: GPS location (latitude and longitude), date and time of sighting, number of marine mammals, photograph(s)/video(s), and description of the incident to provide to the Response Network.

Southern part of the Gulf of St. Lawrence (New Brunswick, Nova Scotia & Prince Edward Island):

Marine Animal Response Society
Telephone: 1-866-567-6277

Newfoundland and Labrador:

Whale Release and Strandings Newfoundland and Labrador (Tangly Whales Inc.)
Telephone: 1-888-895-3003 or 1-709-895-3003

Quebec:

Baleines en direct (GREMM)
Telephone: 1-877-722-5346

REPORT A MARINE MAMMAL OR SEA TURTLE INCIDENT OR SIGHTING:

For more information on reporting other marine mammal or sea turtle sighting and incidents:

<https://www.dfo-mpo.gc.ca/species-especies/mammals-mammiferes/report-rapport/page01-eng.html>

Please consult Whale Insight for the latest right whale observations:

<https://gisp.dfo-mpo.gc.ca/apps/WhaleInsight/eng/?locale=en>

***406/24 Saguenay–St. Lawrence Marine Park - Beluga Whale Protection: Slowdown Area at the Mouth of the Saguenay Fjord and Area Closure at Baie Sainte-Marguerite**

(Recurrent publication of notice *406/24, originally published in the *Notices to Mariners – Monthly Eastern Edition 04/2024* publication.)

The Saguenay–St. Lawrence Marine Park and its surrounding area are at the heart of endangered beluga whale critical summer habitat. Marine mammal protection measures have been put in place in accordance with the *Marine Activities in the Saguenay–St. Lawrence Marine Park Regulations* within the limits of the Marine Park.

However, important feeding, calving and rearing areas for beluga whales require greater protection to ensure the recovery of the species. The portion of the Saguenay situated between the mouth of the Fjord and Baie Sainte-Marguerite is one of the areas most used by females and their young from May to October. The mouth of the Saguenay is known as a feeding ground and Baie Sainte-Marguerite as a calving and rearing area.

In order to prevent collisions with beluga whales, a compulsory 15-knot slowdown area is in effect from May 1st to October 31st at the mouth of the Saguenay. To ensure tranquility for female belugas and their young during the critical calving period, access to Baie Sainte-Marguerite is prohibited to all vessels from June 21st to September 21st, except for special authorizations (see description below).

For safety reasons, *the slowdown area measure at the mouth of the Saguenay Fjord does not apply* to cargo ships (see the monthly edition of *Notice to Mariners* from May to October for voluntary protection measures in the St. Lawrence Estuary). An enhanced vigilance is, however, recommended to all navigators between the mouth of the Saguenay Fjord and Baie Sainte-Marguerite for the protection of beluga whales.

For more information on the Saguenay–St. Lawrence Marine Park, see notice 5C of the *Notices to Mariners Annual Edition 2024* or visit marinepark.gc.ca.

REGULATORY PROTECTION MEASURES — BELUGA WHALE

Entire Marine Park Territory:

- When beluga whales are less than half a nautical mile (926 metres) from a motorized vessel, the vessel must maintain a steady speed of between 5 and 10 knots.
- All vessels, including human-powered vessels (kayaks and canoes), must continue to move forward and maintain their heading.
- All vessels must maintain a minimum distance of 400 metres from beluga whales at all times.

For more information concerning the regulations, consult: marinepark.ca.

Mouth of the Saguenay Fjord (Figure 1) — Slowdown Area (area crosshatched in red):

- Maximum speed at the mouth of the Saguenay between buoys S7 and S8 and the ferry docks between Baie-Sainte-Catherine and Tadoussac is 15 knots from May 1st to October 31st.

Baie Sainte-Marguerite (Figure 2) — Area Closure (red area):

- From June 21st to September 21st, vessels must not enter the red area, which follows a line between Cap Nord-Ouest and Cap Sainte-Marguerite.
- Special authorizations are granted only for kayaks, canoes and recreational fishermen who must travel without stopping along a corridor within 10 metres of the shore or in shallow areas.

VOLUNTARY PROTECTION MEASURES

Baie Sainte-Marguerite sector (Figure 2) — Transit Area (area crosshatched in yellow):

- From June 21st to September 21st, navigation in this area is recommended at a speed of between 5 and 10 knots without stopping.

The purpose of this transit area is to favour respect of the *Marine Activities in the Saguenay–St. Lawrence Marine Park Regulations*, since beluga whales are often present in the Baie Sainte-Marguerite sector.

Information

All incidents, including collisions with whales, must be reported without delay by calling 1-866-508-9888. For any other situation concerning a marine mammal that is either dead or in trouble, contact the Marine Mammal Emergency Response Network at 1-877-722-5346, or use VHF channel 16.

Figure 1

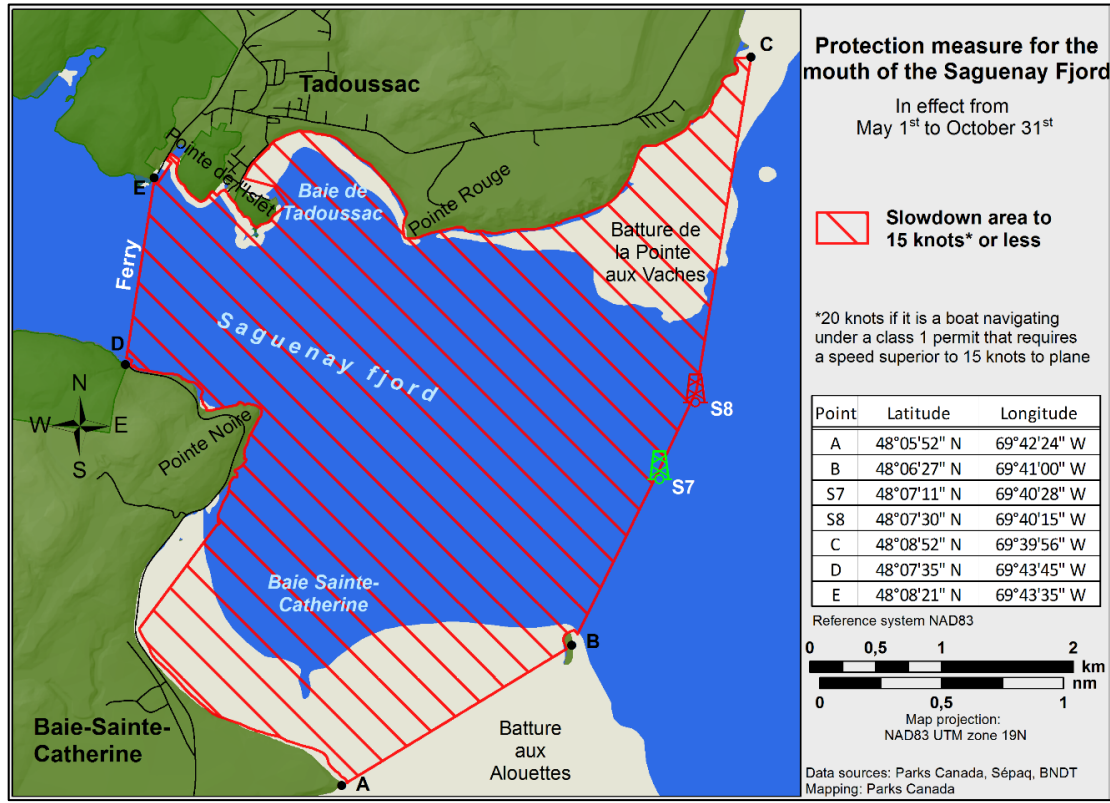
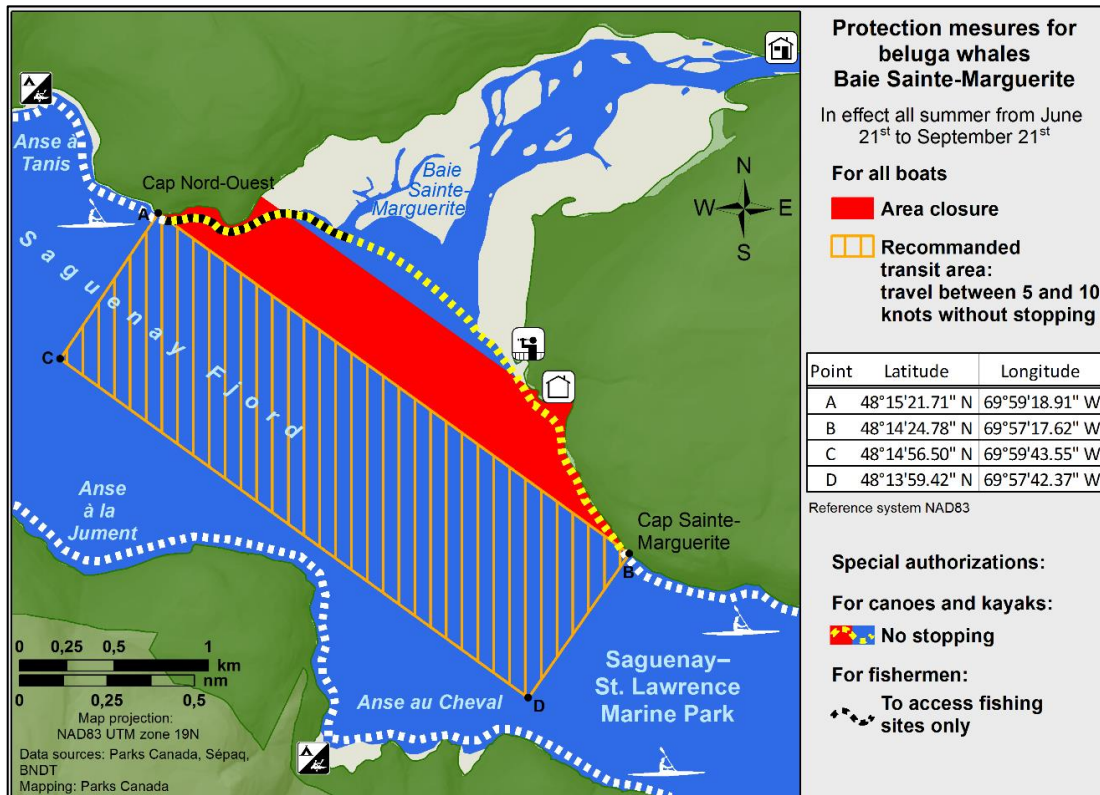


Figure 2



***407/24 Saguenay – St. Lawrence Marine Park and Surrounding Waters – Whale Protection**

(Recurrent publication of notice *407/24, originally published in the *Notices to Mariners – Monthly Eastern Edition 04/2024* publication.)

The waters in and around the Saguenay–St. Lawrence Marine Park are well known for the resident endangered beluga population and the wide diversity of whales that migrate there to feed, particularly between April and November.

REGULATORY PROTECTION MEASURES

All whale species that are found in the St. Lawrence are protected under the *Marine Mammal Regulations*, pursuant to the *Fisheries Act*. Within the boundaries of the Marine Park, specific measures are set out in the *Marine Activities in the Saguenay–St. Lawrence Marine Park Regulations*, pursuant to the establishment of the *Saguenay–St. Lawrence Marine Park Act*. Any collision with a marine mammal within the Marine Park must immediately be reported to a park warden at 1-866-508-9888. For collisions that occur outside the Marine Park or for any situation involving a marine mammal that is dead or in trouble, contact the emergency network at 1-877-722-5346 or on VHF channel 16.

For more information on the Saguenay–St. Lawrence Marine Park, see notice 5C of the *Notices to Mariners Annual Edition 2024*.

VOLUNTARY PROTECTION MEASURES

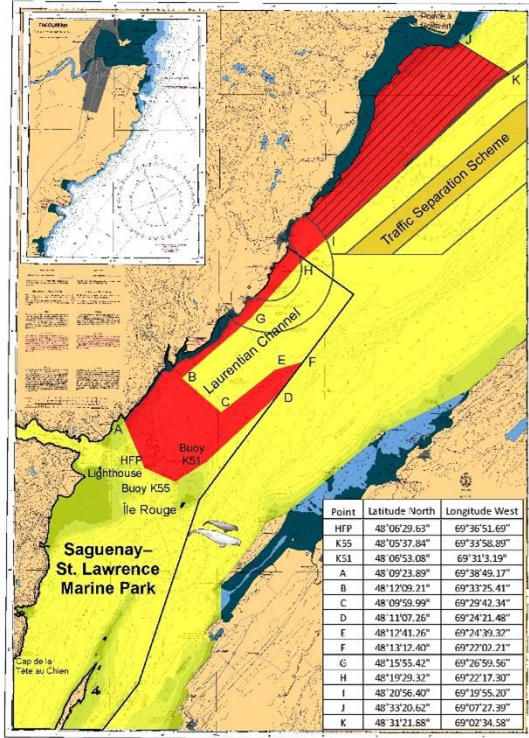
Provisional measures in effect from May 1 to October 31, 2024. See map at the end of this notice.

These measures apply to merchant vessels and cruise ships between Pointe à Boisvert and Cap de la Tête au Chien to prevent collisions with whales. These measures should only be taken when they will not jeopardize navigational safety.

Caution area (yellow area): To reduce the risk of collisions with whales that can be present anywhere in this area, heightened vigilance of navigators is critical. Posting a lookout is recommended in order to increase the chances of seeing the whales and thus taking necessary measures to avoid them. If bypassing the whales is not possible, slow down and wait for the animals to move away to a distance greater than 400 metres (0.215 nautical miles) before resuming original speed. It is more difficult to see the animals at night therefore increased caution is recommended.

Slow down to 10 knots or less area (red area): To reduce the risk of collisions with whales in this feeding area, it is recommended that vessels slow down to a maximum speed through the water of 10 knots and post a lookout. It is further recommended to remain in the Laurentian Channel to the north of Île Rouge to minimize the impact of noise in a sensitive area south of this island, which is highly frequented by herds of beluga whales composed of females and young.

Area to be avoided (hatched red area): To reduce noise and the risk of collisions with whales, vessels should avoid transiting through this area which is highly frequented by blue whales, an endangered species. If the area cannot be avoided, slow down to a speed through the water of 10 knots or less.

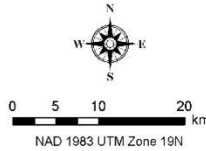


Voluntary protection measures to reduce the risk of ship strikes with whales and to minimize the impact of noise on beluga whale

Provisional measures in effect from May 1st to October 31st 2024

- Caution area**
presence of whales
 - Slow down to 10 knots* or less area**
Important whale feeding area
 - Area to be avoided; if impossible, slow down to 10 knots* or less**
Important blue whale area
- Sensitive area highly used by beluga herds composed of females and young
It is recommended to navigate in the Laurentian Channel north of Ile Rouge

* 10 knots refers to speed through water



***501/24 Canadian Hydrographic Service – Electronic Navigational Charts**

S-57 ENC Number	Chart Title	ENC Compilation Scale	Published
New Charts			
CA448PMA (Edn 1.000)	CA448PMA	1:22 500	2024-05-10
CA448SCA (Edn 1.000)	CA448SCA	1:45 000	2024-05-24
CA448SNA (Edn 1.000)	CA448SNA	1:45 000	2024-05-24
CA448SYA (Edn 1.000)	CA448SYA	1:45 000	2024-05-24
CA448T9A (Edn 1.000)	CA448T9A	1:45 000	2024-05-24
CA448TKA (Edn 1.000)	CA448TKA	1:90 000	2024-05-24
CA44JPBA (Edn 1.000)	CA44JPBA	1:90 000	2024-05-10
CA44JPMA (Edn 1.000)	CA44JPMA	1:90 000	2024-05-10
CA44JPXA (Edn 1.000)	CA44JPXA	1:90 000	2024-05-10
CA44JQ8A (Edn 1.000)	CA44JQ8A	1:90 000	2024-05-10
CA44JQUB (Edn 1.000)	CA44JQUB	1:45 000	2024-05-10
CA44JR5A (Edn 1.000)	CA44JR5A	1:45 000	2024-05-10
CA44JRFA (Edn 1.000)	CA44JRFA	1:45 000	2024-05-24
CA44JS2A (Edn 1.000)	CA44JS2A	1:45 000	2024-05-24
CA44JS2B (Edn 1.000)	CA44JS2B	1:45 000	2024-05-24
CA44JSCA (Edn 1.000)	CA44JSCA	1:45 000	2024-05-24

S-57 ENC Number	Chart Title	ENC Compilation Scale	Published
CA44JSCB (Edn 1.000)	CA44JSCB	1:45 000	2024-05-24
CA44JSNA (Edn 1.000)	CA44JSNA	1:45 000	2024-05-24
CA44JSNB (Edn 1.000)	CA44JSNB	1:45 000	2024-05-24
CA44JSNC (Edn 1.000)	CA44JSNC	1:45 000	2024-05-24
CA44JSYA (Edn 1.000)	CA44JSYA	1:45 000	2024-05-24
CA44JSYB (Edn 1.000)	CA44JSYB	1:22 500	2024-05-17
CA44JSYC (Edn 1.000)	CA44JSYC	1:45 000	2024-05-24
CA44JSYD (Edn 1.000)	CA44JSYD	1:45 000	2024-05-24
CA44JT9A (Edn 1.000)	CA44JT9A	1:45 000	2024-05-24
CA44JT9B (Edn 1.000)	CA44JT9B	1:45 000	2024-05-24
CA44JT9C (Edn 1.000)	CA44JT9C	1:45 000	2024-05-24
CA44JTKA (Edn 1.000)	CA44JTKA	1:45 000	2024-05-24
CA44UPBA (Edn 1.000)	CA44UPBA	1:90 000	2024-05-10
CA44UPMB (Edn 1.000)	CA44UPMB	1:90 000	2024-05-10
CA44UPXB (Edn 1.000)	CA44UPXB	1:90 000	2024-05-10
CA44URRA (Edn 1.000)	CA44URRA	1:22 500	2024-05-10
CA44USYA (Edn 1.000)	CA44USYA	1:45 000	2024-05-24
CA44UT9A (Edn 1.000)	CA44UT9A	1:45 000	2024-05-24
CA44UT9B (Edn 1.000)	CA44UT9B	1:45 000	2024-05-24
CA44UT9C (Edn 1.000)	CA44UT9C	1:45 000	2024-05-24
CA44UT9D (Edn 1.000)	CA44UT9D	1:45 000	2024-05-24
CA44UTKA (Edn 1.000)	CA44UTKA	1:45 000	2024-05-24
CA45RRA (Edn 1.000)	CA45RRA	1:45 000	2024-05-10
CA45S2A (Edn 1.000)	CA45S2A	1:45 000	2024-05-10
CA45SCA (Edn 1.000)	CA45SCA	1:90 000	2024-05-10
CA45SNA (Edn 1.000)	CA45SNA	1:90 000	2024-05-10
CA45SNB (Edn 1.000)	CA45SNB	1:90 000	2024-05-10
CA45SNC (Edn 1.000)	CA45SNC	1:22 500	2024-05-10
CA45SYA (Edn 1.000)	CA45SYA	1:22 500	2024-05-10
CA45SYB (Edn 1.000)	CA45SYB	1:22 500	2024-05-10
CA45SYC (Edn 1.000)	CA45SYC	1:22 500	2024-05-10
CA45SYD (Edn 1.000)	CA45SYD	1:22 500	2024-05-10
CA45SYE (Edn 1.000)	CA45SYE	1:22 500	2024-05-10
CA45T9A (Edn 1.000)	CA45T9A	1:90 000	2024-05-10
CA45TKA (Edn 1.000)	CA45TKA	1:90 000	2024-05-10
CA45FSCA (Edn 1.000)	CA45FSCA	1:90 000	2024-05-10
CA45FSNA (Edn 1.000)	CA45FSNA	1:90 000	2024-05-10
CA45FSYA (Edn 1.000)	CA45FSYA	1:90 000	2024-05-10

S-57 ENC Number	Chart Title	ENC Compilation Scale	Published
CA45FT9A (Edn 1.000)	CA45FT9A	1:90 000	2024-05-10
CA45FTKA (Edn 1.000)	CA45FTKA	1:90 000	2024-05-10
CA471206 (Edn 1.000)	CA471206	1:22 500	2024-05-24
CA471207 (Edn 1.000)	CA471207	1:90 000	2024-05-24
CA471208 (Edn 1.000)	CA471208	1:45 000	2024-05-24
CA471210 (Edn 1.000)	CA471210	1:90 000	2024-05-24
CA471219 (Edn 1.000)	CA471219	1:45 000	2024-05-24
CA471220 (Edn 1.000)	CA471220	1:22 500	2024-05-24
CA486EUA (Edn 1.000)	CA486EUA	1:90 000	2024-05-03
CA486F5A (Edn 1.000)	CA486F5A	1:90 000	2024-05-03
CA48GEUA (Edn 1.000)	CA48GEUA	1:90 000	2024-05-03
CA48GF5A (Edn 1.000)	CA48GF5A	1:90 000	2024-05-03
CA4AAAWA (Edn 1.000)	Transit6600N10800W	1:22 500	2024-05-03
CA4AAB7A (Edn 1.000)	Transit6600N10900W	1:22 500	2024-05-03
CA4AL9PA (Edn 1.000)	Transit6700N11200W	1:90 000	2024-05-03
CA4ALA0A (Edn 1.000)	Transit6700N11100W	1:90 000	2024-05-03
CA4ALAAA (Edn 1.000)	Transit6700N11000W	1:90 000	2024-05-03
CA4ALALA (Edn 1.000)	Transit6700N10900W	1:45 000	2024-05-03
CA4ALAWA (Edn 1.000)	Transit6700N10800W	1:45 000	2024-05-03
CA4AW9PA (Edn 1.000)	Transit6800N11200W	1:90 000	2024-05-03
CA4AWA0A (Edn 1.000)	Transit6800N11100W	1:90 000	2024-05-03
CA4AWAAA (Edn 1.000)	Transit6800N11000W	1:90 000	2024-05-03
CA4AWALA (Edn 1.000)	Transit6800N10900W	1:90 000	2024-05-03
CA4AWAWA (Edn 1.000)	Transit6800N10800W	1:90 000	2024-05-03
CA4B7AWA (Edn 1.000)	Transit6900N10800W	1:90 000	2024-05-03
CA55FSLA (Edn 1.000)	CA55FSLA	1:11 000	2024-05-10
CA55FSMA (Edn 1.000)	CA55FSMA	1:11 000	2024-05-10
New Editions			
CA24URFB (Edn 2.000)	CA24URFB	1:175 000	2024-05-24
CA262SNA (Edn 2.000)	CA262SNA	1:350 000	2024-05-03
CA370203 (Edn 7.000)	Approaches to/Approches à Juan de Fuca Strait	1:75 000	2024-05-24
CA370208 (Edn 4.000)	Ucluelet Inlet to/à Nootka Sound	1:75 000	2024-05-24
CA376062 (Edn 14.000)	West Point à/to Baie de Tracadie	1:50 000	2024-05-17
CA376167 (Edn 9.000)	Cape Smoky to St. Paul Island	1:37 500	2024-05-17
CA376308 (Edn 3.000)	Chéticamp to/à Cape St. Lawrence	1:37 500	2024-05-17
CA376336 (Edn 4.000)	Bonavista Bay, Western Portion/Partie ouest	1:30 000	2024-05-17
CA46CS2A (Edn 2.000)	CA46CS2A	1:45 000	2024-05-03
CA470333 (Edn 6.000)	Tofino Inlet to/à Millar Channel (Part 1 of 2)	1:20 000	2024-05-24

S-57 ENC Number	Chart Title	ENC Compilation Scale	Published
CA470342 (Edn 6.000)	Millar Channel to/à Estevan Point (Part 2 of 2)	1:20 000	2024-05-24
CA54MQVA (Edn 3.000)	Port4730N06190W	1:4 000	2024-05-31
CA54NQVA (Edn 2.000)	Port4740N06190W	1:4 000	2024-05-31
CA576001 (Edn 14.000)	Halifax Harbour - Bedford Basin	1:5 000	2024-05-10
Charts Permanently Withdrawn			
CA370016	Strait of Georgia, Northern Portion/Partie Nord	Cancelled by CA471210,CA471208,CA471207	
CA370381	Strait of Georgia, Central Portion/Partie Centrale (Part 1 of 2)	Cancelled by CA471211,CA471208	
CA373302	Bathurst Inlet - Southern Portion/Partie sud		
CA373336	Coronation Gulf Eastern Portion/Partie Est		
CA373337	Johansen Bay and/et Edinburgh Channel		
CA373349	Bathurst Inlet - Northern Portion/Partie nord		
CA373351	Bathurst Inlet - Central Portion/Partie Centrale		
CA376015	Motion Bay to/à Cape St Francis		
CA376070	Renews Harbour to/à Motion Bay		
CA376075	Bay Bulls to/à St. Mary's Bay		
CA376106	Cape Pine to/à Renews Harbour		
CA376120	Conception Bay		
CA376134	Neguac Bay (Continuation A)		
CA376135	Cape Pine to/au Cape St. Mary's		
CA376146	Cape St. Francis to/à Baccalieu Island and/et Heart's Content		
CA376153	Trinity Bay - Southern Portion/Partie Sud		
CA376164	Burin Peninsula to Saint-Pierre		
CA376166	Saint-Pierre and Miquelon (France)		
CA376173	Cape St. Mary's to Argentia Harbour and Jude Island		
CA376176	Long Island to St. Lawrence Harbours		
CA376187	Baie des Chaleurs / Chaleur Bay		
CA376233	Fortune Bay Southern Portion/Partie Sud		
CA376243	Trinity Bay - Northern Portion/Partie Nord		
CA376293	Head of / Fond de St Mary's Bay		
CA376296	Cape St Mary's to/à Argentia		
CA376316	Fortune Bay Northern Portion/Partie Nord		
CA376336	Bonavista Bay, Western Portion/Partie ouest		
CA376337	Continuation A		
CA376339	Bonavista Bay, Southern Portion - Continuation A		

S-57 ENC Number	Chart Title	ENC Compilation Scale	Published
CA376340	Catalina Harbour to/à Inner Gooseberry Island		
CA376371	Indian Bay to/à Wadham Islands		
CA376616	Garia Bay to/à Burgeo		
CA376619	Burgeo to/à François		
CA376625	Cape Ray to/à Garia Bay		
CA376627	Hare Bay to/à Fortune Head		
CA376655	Cape Freels to/à Exploits Islands		
CA376656	White Bay and/et Notre Dame Bay		
CA376660	Cape St. John to/à St. Anthony		
CA376807	Bonavista Bay, Southern Portion		
CA376808	Bonavista Bay, Southern Portion		
CA470017	Discovery Passage		
CA470095	Jervis Inlet	Cancelled by CA471208	
CA470103	Desolation Sound and/et Sutil Channel	Cancelled by CA471208,CA471207	
CA470167	Alberni Inlet	Cancelled by CA471220,CA471219,CA471210,CA471207	
CA470218	Baynes Sound		
CA470334	Tofino Inlet to/à Millar Channel (Part 2 of 2)	Cancelled by CA471206	
CA470337	Barkley Sound (Part 1 of 2)	Cancelled by CA471219,CA471207,CA471206	
CA470338	Barkley Sound (Part 2 of 2)	Cancelled by CA471219,CA471207	
CA470725	Lasqueti Island	Cancelled by CA471210,CA471208	
CA470756	Halibut Bank to/à Ballenas Channel	Cancelled by CA471210	
CA476051	Smith Sound and/et Random Sound		
CA476079	Head of/Fond de Placentia Bay		
CA476080	Head of/Fond de Placentia Bay - Continuation A		
CA476081	Head of/Fond de Placentia Bay - Continuation B		
CA476085	Port Harmon and Approaches/et les approches		
CA476125	Miramichi		
CA476126	Miramichi River - Chatham to/à Newcastle		
CA476133	Entrée à/Entrance to Miramichi River		
CA476168	Lewisporte and Approaches and Loon Bay		
CA476190	Bay of Islands		
CA476244	Trinity Harbour		
CA476279	Hamilton Sound, Eastern Portion / Partie est		

S-57 ENC Number	Chart Title	ENC Compilation Scale	Published
CA476294	St. Mary's Harbour and Adjacent Anchorages/et mouillages adjacents		
CA476300	Red Island to Pinchgut Point		
CA476323	Great Bay de l'Eau and Approaches/et les approches		
CA476479	Bay D'Espoir and/et Hermitage Bay		
CA476480	Hermitage Bay, Continuation	Cancelled by CA44JSNA	
CA476520	Paradise Sound		
CA476622	Burgeo and/et Ramea Islands		
CA476639	Black Island to/à Little Denier Island		
CA476657	Botwood and Approaches/et les approches	Cancelled by CA455SNC	
CA476658	Continuation A:Northern Arm	Cancelled by CA455SNC	
CA476708	Gregory Harbour to Rocky Harbour		
CA476719	Fogo Island Northern Portion		
CA476802	Bacalhao Island to Black Island		
CA476803	Bacalhao Island to Black Island	Cancelled by CA455SYC	
CA476804	Bacalhao Island to Black Island		
CA476805	Presque Harbour to Bar Haven Island and Paradise Sound		
CA476806	Presque Harbour to Bar Haven Island and Paradise Sound		
CA476813	Carmanville to Bacalhoa Island and Fogo (Southern Portion)		
CA476814	Carmanville to Bacalhoa Island and Fogo (Northern Portion)		

***502/24 Transport Canada - Ship Safety Bulletin #11/2024**

A new **Ship Safety Bulletin** has recently been posted on the [Transport Canada website](#).

To view or download this bulletin, please click on the link below:

[SSB#11/2024](#) – New safe manning webpage and revised application forms to obtain a safe manning document (Updated in April 2024)
RDIMS# 20087849

Sign up for [e-Bulletin](#) to receive an e-mail notice each time a new Ship Safety Bulletin is published on our website.

Contact us at marinesafety-securitemaritime@tc.gc.ca or 1-855-859-3123 (Toll Free).

***503/24 Canadian Coast Guard Publication - Amendments to the *Notices to Mariners Annual Edition 2024* - Section A, Notice 5: General Guidelines for Aquatic Species at Risk and Important Marine Mammal Areas**

Several amendments have been made throughout Notice 5, General Guidelines for Aquatic Species at Risk and Important Marine Mammal Areas.

The latest version of this notice is available on the [Notices to Mariners website](#).

***504/24 Canadian Coast Guard Publication - Amendments to the *Notices to Mariners Annual Edition 2024* - Section A, Notice 5A: General Regulatory Requirements for all *Oceans Act* Marine Protected Areas**

Several amendments have been made throughout Notice 5A, General Regulatory Requirements for all *Oceans Act* Marine Protected Areas from pages 25 to 33.

The latest version of this notice is available on the [Notices to Mariners website](#).

***506/24 Lac Memphrémagog – Unlit Buoys Permanently Changed**

Reference chart: 1360

The following unlit buoys have been permanently changed:

Aid Name	LL #	Position	Changes
Magog buoy K6	7389.05	45° 15' 56.3"N 072° 09' 23.3"W	Buoy type changed from spar to conical.
Magog buoy K8	7389.07	45° 15' 53.6"N 072° 09' 26.3"W	Buoy type changed from spar to conical.
Magog buoy K9	7389.08	45° 15' 53.4"N 072° 09' 25.5"W	Buoy type changed from spar to can.
Knowlton Landing buoy #1	12635	45° 09' 06.9"N 072° 17' 28.6"W	Buoy discontinued.
Knowlton Landing buoy #2	12636	45° 09' 08.0"N 072° 17' 27.1"W	Buoy discontinued.
Knowlton Landing buoy #3	12637	45° 09' 09.9"N 072° 17' 26.8"W	Buoy discontinued.
Knowlton Landing buoy #4	12638	45° 09' 10.4"N 072° 17' 25.3"W	Buoy discontinued.
Knowlton Landing buoy #5	12639	45° 09' 05.8"N 072° 17' 24.3"W	Buoy discontinued.
Knowlton Landing buoy #6	12640	45° 09' 07.3"N 072° 17' 21.7"W	Buoy discontinued.

(Q2024-152 to 157, 160 to 162)

***507/24 Port Severn to/à Parry Sound – Unlit Buoy Permanently Established**

Reference chart: 2202

The following unlit buoy has been permanently established at the following coordinates:

Aid Name	LL #	Position
Buoy CD1/5	8214.5	44° 58' 53.5"N 079° 56' 55.1"W

(D2024-051)

***508/24 Harbours on the North Shore / Hâvres sur la Côte Nord – Unlit Buoys Repositioned**

Reference chart: 4425

The following unlit buoys have been repositioned to the following coordinates:

Aid Name	LL #	Position
Covehead Bay Entrance buoy JJ14	5050.94	46° 25' 18.0"N 063° 08' 59.9"W
Covehead Bay buoy JJ15	5050.95	46° 25' 17.4"N 063° 08' 54.4"W

(G2024-074, 075)

***509/24 Pugwash Harbour, Wallace Harbour, Amet Sound and Approaches / et les Approches – Unlit Buoy Shape Changed**

Reference chart: 4937

The shape of the following unlit buoy has been changed from can to spar:

Aid Name	LL #	Position
Pugwash Channel buoy UK15	5933.1	45° 51' 50.6"N 063° 40' 25.6"W

(G2024-063)

***510/24 Havre-Aubert – Period of Service Changed**

Reference chart: 4957

The period of service of the following unlit buoy has been changed from “Seasonal” to “Year round”:

Aid Name	LL #	Position
Havre-Aubert buoy YK23	6504.1	47° 14' 05.6"N 061° 49' 37.5"W

(Q2024-151)

Section 1A: Temporary and Preliminary Notices

Reminder – Comment Period for Active Preliminary Notices

This is a reminder that the comment period is still open for the following active Preliminary notices:

Notice #	Reference Chart #	Aids Affected (LL #)	Intent of Notice
Newfoundland and Labrador Coast			
307(P)/24	4523	List	Light Buoys to be Discontinued
308(P)/24	4642	List	Light Buoys to be Discontinued
Inland Waters			
316(P)/24	7661	4618	Aid to Navigation to be Discontinued

Please refer to the [Notices to Mariners - Monthly Summary of Temporary and Preliminary Notices](#) publication for details.

Newfoundland and Labrador Coast

Temporary Notices

No notices applicable for this edition.

Preliminary Notices

Atlantic Region

Comment Submission

Comments on proposed changes in preliminary (P) notices are solicited from mariners and other interested parties within three months of the initial publication date. Following this date, the notices will be cancelled. Any objections raised must state the facts on which they are based and should include supporting information on safety, commerce and public benefit.

Comments should be directed to the following:

Superintendent,
Aids to Navigation & Waterways
Canadian Coast Guard, Atlantic Region
P.O. Box 1000
50 Discovery Drive
Dartmouth, NS B2Y 3Z8
Telephone: (506) 636-4708
Email: DFO.CCGATLaidstoNavDiscont-AidesalanavSupprATLGCC.MPO@dfo-mpo.gc.ca

*512(P)/24 Hawkes Bay, Port Saunders, Back Arm – Fog Signal to be Discontinued

Reference chart: 4679

The Canadian Coast Guard proposes to permanently discontinue the fog signal from the following aid to navigation:

Aid Name	LL #	Position
Keppel Island	208	50° 37' 58.9"N 057° 19' 19.9"W

Initial publication date: Friday, May 31st, 2024

[Comment submission deadline](#): Thursday, August 29, 2024

(N2024-058)

Atlantic Coast

Temporary Notices

No notices applicable for this edition.

Preliminary Notices

No notices applicable for this edition.

Inland Waters

Temporary Notices

***513/24 Murray Canal to Healey Falls Locks / Murray Canal aux Écluses de Healey Falls – Construction Operations Completed**

Reference: Notice 710(T)/20 is cancelled (Chart 2021).

The construction operations at the mouth of the Trent River south of Dundas Street bridge in Trenton have been completed.

Preliminary Notices

No notices applicable for this edition.

Section 2: Chart Corrections

1233 - Cap aux Oies à/to Sault-au-Cochon - New Edition - 21-OCT-2022 - NAD 1983 03-MAY-2024

Add	depth of 14,5 metres (See Chart 1, I10)	47°26'50.2"N 070°21'41.5"W <i>DFO(6411105-01)</i>
Add	depth of 15 metres (See Chart 1, I10)	47°26'51.9"N 070°21'29.7"W <i>DFO(6411105-02)</i>

1234 - Cap de la Tête au Chien au/to Cap aux Oies - New Edition - 04-NOV-2011 - NAD 1983 03-MAY-2024

Add	depth of 10,7 metres (See Chart 1, I10)	47°55'44.8"N 069°32'16.5"W <i>DFO(6410953-02)</i>
Add	depth of 9,6 metres (See Chart 1, I10)	47°54'19.9"N 069°33'26.4"W <i>DFO(6410953-03)</i>
Add	depth of 12,5 metres (See Chart 1, I10)	47°54'11.7"N 069°34'05.7"W <i>DFO(6410953-04)</i>
Add	depth of 14,5 metres (See Chart 1, I10)	47°26'50.2"N 070°21'41.5"W <i>DFO(6411105-01)</i>

1234 - Pointe de la Rivière du Loup - New Edition - 04-NOV-2011 - NAD 1983 03-MAY-2024

Amend	5m (2016) to read 4,2m (2023) (See Chart 1, I22)	47°50'52.0"N 069°34'20.4"W <i>DFO(6411094-01)</i>
Delete	depth of 4,2 metres (See Chart 1, I10)	47°50'51.3"N 069°34'16.0"W <i>DFO(6411094-02)</i>
Add	depth of 3,7 metres (See Chart 1, I10)	47°50'51.1"N 069°34'16.0"W <i>DFO(6411094-03)</i>
Delete	depth of 3,6 metres (See Chart 1, I10)	47°50'50.4"N 069°34'18.9"W <i>DFO(6411094-04)</i>
Add	depth of 3,1 metres (See Chart 1, I10)	47°50'50.3"N 069°34'18.7"W <i>DFO(6411094-05)</i>
Delete	depth of 1,5 metres (See Chart 1, I10)	47°50'50.7"N 069°34'10.3"W <i>DFO(6411094-06)</i>
Add	depth of 0,3 metres (See Chart 1, I10)	47°50'50.7"N 069°34'10.3"W <i>DFO(6411094-07)</i>

Delete	depth of 0,4 metres (See Chart 1, I10)	47°50'49.5"N 069°34'16.7"W <i>DFO(6411094-08)</i>
Add	drying height of 0,2 metres (See Chart 1, I15)	47°50'49.8"N 069°34'15.7"W <i>DFO(6411094-09)</i>
Add	depth of 0,0 metre (See Chart 1, I10)	47°50'49.7"N 069°34'16.8"W <i>DFO(6411094-10)</i>
Add	depth of 3,4 metres (See Chart 1, I10)	47°50'52.9"N 069°34'16.5"W <i>DFO(6411094-11)</i>
Add	depth of 2 metres (See Chart 1, I10)	47°50'50.3"N 069°34'16.1"W <i>DFO(6411094-12)</i>

1234 - Port de Pointe-au-Pic - New Edition - 04-NOV-2011 - NAD 1983
03-MAY-2024

LNМ/D. 24-NOV-2023

Delete	depth of 11,5 metres (See Chart 1, I10)	47°37'15.6"N 070°08'23.2"W <i>DFO(6411096-01)</i>
Add	depth of 4,4 metres (See Chart 1, I10)	47°37'22.2"N 070°08'22.4"W <i>DFO(6411096-03)</i>
Add	depth of 1,5 metres (See Chart 1, I10)	47°37'22.0"N 070°08'22.7"W <i>DFO(6411096-04)</i>
Add	depth of 11,1 metres (See Chart 1, I10)	47°37'15.5"N 070°08'22.7"W <i>DFO(6411096-06)</i>

1315 - Québec à/to Donnacona - New Edition - 24-MAY-2019 - NAD 1983
24-MAY-2024

LNМ/D. 19-JAN-2024

Amend	legend 2 Iso G to read Iso G against light (See Chart 1, P16)	46°44'44.2"N 071°17'16.2"W <i>DFO(6411005-03)</i>
Add	light Iso G (See Chart 1, P1, P16)	46°44'42.1"N 071°17'26.2"W <i>DFO(6411005-05)</i>

1316 - Continuation A - New Edition - 03-APR-2020 - NAD 1983
24-MAY-2024

LNМ/D. 12-JAN-2024

Delete	light Iso G 2s7M (See Chart 1, P1, P16)	46°44'44.0"N 071°17'17.0"W <i>(Q2024032) LL(1963.1) DFO(6411005-01)</i>
Add	light Iso G 2s11M (See Chart 1, P1, P16)	46°44'42.1"N 071°17'26.2"W <i>LL(1963.1) DFO(6411005-02)</i>

1320 - Port de Gros-Cacouna - New Chart - 26-AUG-2011 - NAD 1983

03-MAY-2024

LNMD. 23-FEB-2024

Affix	patch Download Patch - https://www.notmar.gc.ca/chsftp/patches/1320_6410953_1_202403141738.pdf	47°55'56.1"N 069°31'20.4"W <i>DFO(6410953-01)</i>
Add	depth of 9,6 metres (See Chart 1, I10)	47°57'05.5"N 069°30'26.9"W <i>DFO(6410953-05)</i>

1320 - Île du Bic au/to Cap de la Tête au Chien - New Chart - 26-AUG-2011 - NAD 1983

03-MAY-2024

LNMD. 23-FEB-2024

Add	depth of 10,7 metres (See Chart 1, I10)	47°55'44.8"N 069°32'16.5"W <i>DFO(6410953-02)</i>
Add	depth of 9,6 metres (See Chart 1, I10)	47°54'19.9"N 069°33'26.4"W <i>DFO(6410953-03)</i>
Add	depth of 12,5 metres (See Chart 1, I10)	47°54'11.7"N 069°34'05.7"W <i>DFO(6410953-04)</i>
Add	depth of 9,5 metres (See Chart 1, I10)	48°03'32.5"N 069°25'36.7"W <i>DFO(6410954-01)</i>
Add	depth of 10 metres (See Chart 1, I10)	48°04'37.4"N 069°25'03.5"W <i>DFO(6410954-02)</i>
Add	depth of 10 metres (See Chart 1, I10)	48°04'46.7"N 069°24'47.0"W <i>DFO(6410954-03)</i>
Add	depth of 9,9 metres (See Chart 1, I10)	48°05'07.0"N 069°22'26.0"W <i>DFO(6410954-04)</i>
Delete	depth of 13,6 metres (See Chart 1, I10)	48°05'32.0"N 069°22'12.1"W <i>DFO(6410954-05)</i>
Add	depth of 13,2 metres (See Chart 1, I10)	48°05'32.1"N 069°22'12.3"W <i>DFO(6410954-06)</i>
Add	depth of 9,9 metres (See Chart 1, I10)	48°06'10.5"N 069°20'05.6"W <i>DFO(6410954-07)</i>
Add	depth of 9,7 metres (See Chart 1, I10)	48°07'11.7"N 069°18'30.3"W <i>DFO(6410954-08)</i>
Add	depth of 9,5 metres (See Chart 1, I10)	48°08'25.3"N 069°16'35.2"W <i>DFO(6410954-09)</i>

Add	depth of 9,7 metres (See Chart 1, I10)	48°08'44.0"N 069°16'12.3"W <i>DFO(6410954-10)</i>
Add	depth of 9,8 metres (See Chart 1, I10)	48°09'05.5"N 069°15'47.2"W <i>DFO(6410954-11)</i>
Add	depth of 9,3 metres (See Chart 1, I10)	48°09'25.1"N 069°15'16.9"W <i>DFO(6410954-12)</i>
Add	submarine cable (See Chart 1, L30.1)	between 48°00'50.9"N 069°26'28.3"W and 48°00'12.7"N 069°25'20.3"W <i>DFO(6410954-13)</i>
Delete	submarine cable (See Chart 1, L30.1)	between 48°00'33.5"N 069°27'01.4"W and 47°59'43.9"N 069°26'10.7"W <i>DFO(6410954-14)</i>
Add	submarine cable (See Chart 1, L30.1)	between 48°00'25.1"N 069°27'16.0"W and 47°59'45.3"N 069°26'08.4"W <i>DFO(6410954-15)</i>
Add	depth of 9,1 metres (See Chart 1, I10)	48°09'32.9"N 069°15'03.2"W <i>DFO(6410954-16)</i>
Add	depth of 9,9 metres (See Chart 1, I10)	48°10'26.1"N 069°12'40.4"W <i>DFO(6410954-17)</i>
Add	depth of 10 metres (See Chart 1, I10)	48°10'55.9"N 069°11'30.3"W <i>DFO(6410954-18)</i>
Add	depth of 9,7 metres (See Chart 1, I10)	48°12'58.4"N 069°07'23.0"W <i>DFO(6410954-19)</i>
Add	depth of 9,3 metres (See Chart 1, I10)	48°09'38.8"N 069°14'46.7"W <i>DFO(6410954-20)</i>

1439 - Carleton Island to/au Charity Shoal - New Edition - 30-SEP-2020 - World Geodetic System 1984

24-MAY-2024

LNM/D. 21-OCT-2022

Add	fixed bridge with vertical clearance of 8.2 metres (See Chart 1, D20.1, D22)	joining 44°15'32.9"N 076°27'56.5"W 44°15'32.8"N 076°28'06.6"W 44°15'31.8"N 076°28'18.1"W 44°15'28.0"N 076°28'40.0"W and 44°15'26.7"N 076°28'45.6"W
-----	---	--

This notice affects Electronic Navigational Chart: CA473036

DFO(6605271-06)

1513 - River Styx to/ à Kingston - Sheet/Feuille 5 - New Edition - 05-JAN-2007 - NAD 1983

24-MAY-2024

LNM/D. 17-NOV-2023

Delete	ramp (See Chart 1, F17)	44°15'26.3"N 076°28'46.7"W <i>DFO(6605271-01)</i>
--------	----------------------------	--

Delete	pier (See Chart 1, F14)	between 44°15'27.1"N 076°28'45.2"W and 44°15'26.8"N 076°28'44.0"W <i>DFO(6605271-02)</i>
Delete	pier (See Chart 1, F14)	between 44°15'28.1"N 076°28'44.9"W and 44°15'27.7"N 076°28'43.6"W <i>DFO(6605271-03)</i>
Delete	pier (See Chart 1, F14)	joining 44°15'29.3"N 076°28'45.0"W 44°15'28.9"N 076°28'42.6"W and 44°15'29.3"N 076°28'42.6"W <i>DFO(6605271-04)</i>
Delete	Channel buoyed / Chenal Balisé Priv	44°15'28.0"N 076°28'27.7"W <i>DFO(6605271-05)</i>
Add	fixed bridge with vertical clearance of 8.2 metres (See Chart 1, D20.1, D22)	joining 44°15'32.9"N 076°27'56.5"W 44°15'32.8"N 076°28'06.6"W 44°15'31.8"N 076°28'18.1"W 44°15'28.0"N 076°28'40.0"W and 44°15'26.7"N 076°28'45.6"W
	This notice affects Electronic Navigational Chart: CA473036	<i>DFO(6605271-06)</i>
2121 - Long Point to à Port Glasgow - New Chart - 18-DEC-1987 - NAD 1927		
	17-MAY-2024	LNM/D. 21-MAY-2021
Delete	abandoned lighthouse, marked Lt Ho/Phare Aband (See Chart 1, P1) This notice affects Electronic Navigational Chart: CA373088, CA573105	42°38'11.1"N 080°48'28.1"W <i>(B2024006) LL(581) DFO(6605233-01)</i>
2181 - Kingsville - New Edition - 11-MAY-2007 - NAD 1983		
	31-MAY-2024	LNM/D. 17-MAY-2024
Amend	FG 12m to read FG 15m (See Chart 1, P16) This notice affects Electronic Navigational Chart: CA373089, CA573314	42°01'38.7"N 082°44'07.4"W <i>(B2024008) LL(614) DFO(6605273-01)</i>
2181 - Port Burwell - New Edition - 11-MAY-2007 - NAD 1983		
	17-MAY-2024	LNM/D. 08-SEP-2023
Delete	abandoned lighthouse, marked Lt Ho/Phare Aband (See Chart 1, P1) This notice affects Electronic Navigational Chart: CA373088, CA573105	42°38'11.3"N 080°48'27.7"W <i>(B2024006) LL(581) DFO(6605233-01)</i>
2315 - Michipicoten River - New Edition - 07-JUL-2006 - NAD 1983		
	10-MAY-2024	LNM/D. 19-NOV-2021
Delete	'Channel Buoyed'	47°56'01.0"N 084°50'39.0"W <i>(D2024028) DFO(6605252-01)</i>
4001 - Gulf of Maine to Strait of Belle Isle / au Detroit de Belle Isle - New Edition - 01-DEC-1995 - NAD 1983		
	31-MAY-2024	LNM/D. 01-DEC-2023
Add	submarine cable (See Chart 1, L30.1)	joining 42°32'07.1"N 068°26'15.8"W 42°33'28.5"N 067°48'49.1"W and 42°20'19.0"N 067°18'24.0"W <i>DFO(6311128-01)</i>

4003 - Cape Breton to / à Cape Cod - New Edition - 21-MAR-2003 - NAD 1983

31-MAY-2024

LNM/D. 01-MAR-2024

Add submarine cable
(See Chart 1, L30.1)

joining 42°31'32.0"N 068°25'28.9"W
42°33'28.5"N 067°48'49.1"W
and 42°20'19.0"N 067°18'24.0"W
DFO(6311128-01)

4011 - Approaches to / Approches à Bay of Fundy / Baie de Fundy - New Edition - 03-JAN-2003 - NAD 1983

31-MAY-2024

LNM/D. 16-FEB-2024

Add submarine cable
(See Chart 1, L30.1)

joining 42°31'32.0"N 068°25'28.9"W
42°33'28.5"N 067°48'49.1"W
and 42°27'05.2"N 067°34'18.4"W
DFO(6311128-01)

4021 - Pointe Amour à / to Cape Whittle et / and Cape George - New Edition - 01-NOV-2002 - NAD 1983

24-MAY-2024

LNM/D. 05-MAY-2023

Amend FI 4s80ft6M to read FI 5s80ft6M against light
(See Chart 1, P16)
This notice affects Electronic Navigational Chart: CA576711

49°28'55.6"N 058°08'04.1"W

(N2023223) LL(199) DFO(6311026-01)

4023 - Northumberland Strait / Détroit de Northumberland - New Edition - 27-DEC-2002 - World Geodetic System 1984

24-MAY-2024

LNM/D. 15-MAR-2024

Delete legend BELL against red and white fairway lighted pillar buoy Mo(A)
(See Chart 1, R14)
This notice affects Electronic Navigational Chart: CA376076

46°16'38.0"N 064°29'05.0"W

(G2024043) LL(1105) DFO(6311124-01)

4118 - Petit Passage - New Edition - 13-NOV-1998 - NAD 1983

10-MAY-2024

LNM/D. 04-MAR-2022

Add light FI 5s
(See Chart 1, P1)
This notice affects Electronic Navigational Chart: CA376024

44°23'48.9"N 066°12'45.2"W

(F2024016) LL(217.5) DFO(6311076-01)

Add breakwater
(See Chart 1, F4.1)

joining 44°23'49.3"N 066°12'51.8"W
44°23'50.3"N 066°12'46.6"W
44°23'50.1"N 066°12'45.9"W
44°23'48.6"N 066°12'45.4"W
44°23'48.7"N 066°12'44.7"W
44°23'50.4"N 066°12'45.3"W
44°23'50.9"N 066°12'46.7"W
and 44°23'49.9"N 066°12'52.3"W

This notice affects Electronic Navigational Chart: CA376024

DFO(6311076-02)

4118 - St. Marys Bay - New Edition - 13-NOV-1998 - NAD 1983

10-MAY-2024

LNM/D. 04-MAR-2022

Add breakwater
(See Chart 1, F4.1)

joining 44°23'48.6"N 066°12'45.1"W
44°23'50.7"N 066°12'45.7"W
and 44°23'49.6"N 066°12'52.1"W
DFO(6311076-03)

4230 - Little Hope Island to / à Cape St Marys - New Chart - 15-JUN-1990 - NAD 1983

17-MAY-2024

LNMD. 26-APR-2024

Add wreck, least depth unknown, dangerous to surface navigation, with legend Rep (2024)
(See Chart 1, K28, I3)
This notice affects Electronic Navigational Chart: CA476048

43°41'30.0"N 065°57'45.6"W

DFO(6311133-01)

4235 - Barren Island to / à Taylors Head - New Edition - 28-APR-2000 - NAD 1983

17-MAY-2024

LNMD. 22-JUL-2022

Delete green port hand can buoy, marked XQ3
(See Chart 1, Qc)
This notice affects Electronic Navigational Chart: CA376102

44°49'54.0"N 062°25'22.0"W

(F2024013) DFO(6311070-01)

4237 - Approaches to / Approches de Halifax Harbour - New Edition - 28-MAY-2021 - World Geodetic System 1984

10-MAY-2024

LNMD. 05-APR-2024

Reposition red and white fairway lighted pillar bell buoy Mo(A), marked HC
(See Chart 1, Qd)
This notice affects Electronic Navigational Chart: CA476009

from 44°30'36.1"N 063°30'13.8"W
to 44°30'06.2"N 063°29'57.7"W

(F2024010) LL(514) DFO(6311059-01)

4243 - Tusket Islands to / à Cape St Marys - New Edition - 11-OCT-2002 - NAD 1983

17-MAY-2024

LNMD. 26-APR-2024

Add wreck, least depth unknown, dangerous to surface navigation, with legend Rep (2024)
(See Chart 1, K28, I3)
This notice affects Electronic Navigational Chart: CA476048

43°41'30.0"N 065°57'45.6"W

DFO(6311133-01)

4244 - Wedgeport and Vicinity / et les abords - New Edition - 26-DEC-2003 - NAD 1983

17-MAY-2024

LNMD. 26-APR-2024

Add wreck, least depth unknown, dangerous to surface navigation, with legend Rep (2024)
(See Chart 1, K28, I3)
This notice affects Electronic Navigational Chart: CA476048

43°41'30.0"N 065°57'45.6"W

DFO(6311133-01)

4320 - Egg Island to / à West Ironbound Island - New Edition - 26-SEP-1997 - NAD 1983

10-MAY-2024

LNMD. 05-APR-2024

Reposition red and white fairway lighted pillar bell buoy Mo(A), marked HC
(See Chart 1, Qd)
This notice affects Electronic Navigational Chart: CA476009

from 44°30'36.5"N 063°30'09.9"W
to 44°30'06.2"N 063°29'57.7"W

(F2024010) LL(514) DFO(6311059-01)

4385 - Chebucto Head to / à Betty Island - New Edition - 07-JUN-1996 - NAD 1983

10-MAY-2024

LNMD. 25-NOV-2022

Delete red and white fairway lighted pillar bell buoy Mo(A), marked HC
(See Chart 1, Qd)

44°30'36.5"N 063°30'13.3"W

(F2024010) LL(514) DFO(6311059-02)

4432 - Archipel de Mingan - New Edition - 01-AUG-2022 - NAD 1983
31-MAY-2024

Delete orange beacon Bn Or
(See Chart 1, Q81)

LNMD. 29-MAR-2024

50°17'50.3"N 063°58'31.6"W
(Q2024003) DFO(6410979-01)

4459 - Summerside Harbour - New Edition - 29-MAY-2020 - NAD 1983
17-MAY-2024

Amend DG1 to read DF1 against green port hand spar buoy
(See Chart 1, Qc)
This notice affects Electronic Navigational Chart: CA576182

LNMD. 01-DEC-2023

46°23'16.2"N 063°47'30.7"W
(G2024045) DFO(6311110-01)

4485 - Cap des Rosiers à/to Chandler - New Edition - 17-JUN-2011 - NAD 1983
17-MAY-2024

Add drying height of 0,4 metres
(See Chart 1, I15)

LNMD. 10-JUN-2022

48°49'26.1"N 064°23'49.1"W
DFO(6411036-01)

Delete depth of 6,7 metres
(See Chart 1, I10)

48°50'55.0"N 064°24'01.5"W
DFO(6411036-02)

Add depth of 6,4 metres
(See Chart 1, I10)

48°50'52.9"N 064°24'01.3"W
DFO(6411036-03)

Add depth of 4,9 metres
(See Chart 1, I10)

48°50'57.5"N 064°24'27.7"W
DFO(6411036-04)

Delete depth of 4,9 metres
(See Chart 1, I10)

48°49'49.0"N 064°27'39.5"W
DFO(6411036-05)

Add depth of 4,6 metres
(See Chart 1, I10)

48°49'51.0"N 064°27'42.4"W
DFO(6411036-06)

Add depth of 0,2 metres
(See Chart 1, I10)

48°51'20.9"N 064°28'32.1"W
DFO(6411036-07)

4661 - Bear Head to / à Cow Head - New Edition - 04-JUL-2003 - NAD 1983
24-MAY-2024

Amend FI 4s80ft6M to read FI 5s80ft6M against light
(See Chart 1, P16)
This notice affects Electronic Navigational Chart: CA576711

LNMD. 17-MAR-2023

49°28'55.4"N 058°07'59.6"W
(N2023223) LL(199) DFO(6311026-01)

4826 - François - New Chart - 24-FEB-2006 - NAD 1983
03-MAY-2024

Add light FI G
(See Chart 1, P1)
This notice affects Electronic Navigational Chart: CA576621

LNMD. 10-NOV-2023

47°34'41.5"N 056°44'39.9"W
(N2023241) LL(137.1) DFO(6311051-01)

Add	<p>pier extension (See Chart 1, F14) This notice affects Electronic Navigational Chart: CA576621</p>	<p>between 47°34'42.8"N 056°44'41.8"W and 47°34'41.5"N 056°44'39.9"W</p> <p style="text-align: right;"><i>DFO(6311051-02)</i></p>
Add	<p>light FI G (See Chart 1, P1) This notice affects Electronic Navigational Chart: CA576621</p>	<p>47°34'50.6"N 056°44'37.1"W</p> <p style="text-align: right;"><i>(N2023242) LL(137.15) DFO(6311052-01)</i></p>
Add	<p>pier extension (See Chart 1, F14) This notice affects Electronic Navigational Chart: CA576621</p>	<p>between 47°34'52.4"N 056°44'37.6"W and 47°34'50.6"N 056°44'37.1"W</p> <p style="text-align: right;"><i>DFO(6311052-02)</i></p>
<p>4847 - Conception Bay - New Edition - 03-AUG-2001 - NAD 1983 24-MAY-2024</p>		
Reposition	<p>private yellow ODAS/SADO lighted pillar buoy FI(5) Y 20s (See Chart 1, Q58) This notice affects Electronic Navigational Chart: CA376120, CA576115</p>	<p>LN/D. 08-SEP-2023</p> <p>from 47°27'47.4"N 053°06'58.2"W to 47°27'39.7"N 053°06'49.8"W</p> <p style="text-align: right;"><i>DFO(6311129-01)</i></p>
<p>4848 - Holyrood - New Edition - 25-JUL-2008 - NAD 1983 24-MAY-2024</p>		
Reposition	<p>private yellow ODAS/SADO lighted pillar buoy FI(5) Y 20s (See Chart 1, Q58) This notice affects Electronic Navigational Chart: CA376120, CA576115</p>	<p>LN/D. 17-NOV-2023</p> <p>from 47°27'47.4"N 053°06'58.2"W to 47°27'39.7"N 053°06'49.8"W</p> <p style="text-align: right;"><i>DFO(6311129-01)</i></p>
<p>4881 - Gregory Island to Rocky Harbour - New Chart - 26-JUL-2019 - World Geodetic System 1984 24-MAY-2024</p>		
Amend	<p>FI 6M to read FI 5s6M against light (See Chart 1, P16) This notice affects Electronic Navigational Chart: CA576711</p>	<p>LN/D. 03-FEB-2023</p> <p>49°28'58.7"N 058°07'58.3"W</p> <p style="text-align: right;"><i>(N2023223) LL(199) DFO(6311026-01)</i></p>
<p>4881 - Trout River - New Chart - 26-JUL-2019 - World Geodetic System 1984 24-MAY-2024</p>		
Amend	<p>FI 4s24m6M to read FI 5s24m6M against light (See Chart 1, P16) This notice affects Electronic Navigational Chart: CA576711</p>	<p>LN/D. 03-FEB-2023</p> <p>49°28'58.7"N 058°07'58.3"W</p> <p style="text-align: right;"><i>(N2023223) LL(199) DFO(6311026-01)</i></p>
<p>4905 - Cape Tormentine à / to West Point - New Edition - 29-DEC-2000 - NAD 1983 24-MAY-2024</p>		
Delete	<p>legend BELL against red and white fairway lighted pillar buoy Mo(A), marked XN (See Chart 1, R14) This notice affects Electronic Navigational Chart: CA376076</p>	<p>LN/D. 23-JUN-2023</p> <p>46°16'38.0"N 064°29'05.0"W</p> <p style="text-align: right;"><i>(G2024043) LL(1105) DFO(6311124-01)</i></p>

4909 - Cocagne et / and Shediac - New Chart - 17-JUN-1988 - NAD 1983

24-MAY-2024

LNMD. 12-JAN-2024

Delete legend BELL against red and white fairway lighted pillar buoy Mo(A),
marked XN
(See Chart 1, R14)
This notice affects Electronic Navigational Chart: CA376076
46°16'38.0"N 064°29'05.0"W
(G2024043) LL(1105) DFO(6311124-01)

5058 - North Head to / à Murphy Head - New Chart - 25-JUN-2010 - NAD 1983

24-MAY-2024

LNMD. 09-DEC-2022

Delete subsurface Ocean Data Acquisition System ODAS/SADO with unknown
depth
(See Chart 1, L25)
This notice affects Electronic Navigational Chart: CA376689
59°01'16.1"N 064°02'31.3"W
DFO(6311132-01)

Delete subsurface Ocean Data Acquisition System ODAS/SADO with unknown
depth
(See Chart 1, L25)
59°04'29.5"N 063°58'02.1"W
DFO(6311132-02)

Delete subsurface Ocean Data Acquisition System ODAS/SADO with an
unknown depth
(See Chart 1, L25)
59°04'20.4"N 063°54'32.5"W
DFO(6311132-03)

Delete subsurface Ocean Data Acquisition System ODAS/SADO with an
unknown depth
(See Chart 1, L25)
58°57'57.0"N 063°52'53.8"W
DFO(6311132-04)

Delete subsurface Ocean Data Acquisition System ODAS/SADO with an
unknown depth
(See Chart 1, L25)
59°02'34.8"N 063°53'10.8"W
DFO(6311132-05)

Delete subsurface Ocean Data Acquisition System ODAS/SADO with an
unknown depth
(See Chart 1, L25)
59°03'30.1"N 063°49'43.2"W
DFO(6311132-06)

Delete subsurface Ocean Data Acquisition System ODAS/SADO with an
unknown depth
(See Chart 1, L25)
59°03'29.1"N 063°48'15.1"W
DFO(6311132-07)

Delete subsurface Ocean Data Acquisition System ODAS/SADO with an
unknown depth
(See Chart 1, L25)
59°02'29.6"N 063°46'04.8"W
DFO(6311132-08)

Delete subsurface Ocean Data Acquisition System ODAS/SADO with an
unknown depth
(See Chart 1, L25)
59°03'35.2"N 063°39'08.7"W
DFO(6311132-09)

Delete subsurface Ocean Data Acquisition System ODAS/SADO with an
unknown depth
(See Chart 1, L25)
59°02'38.6"N 063°38'57.1"W
DFO(6311132-10)

Delete	subsurface Ocean Data Acquisition System ODAS/SADO with an unknown depth (See Chart 1, L25)	59°02'09.4"N 063°32'35.4"W <i>DFO(6311132-11)</i>
Delete	subsurface Ocean Data Acquisition System ODAS/SADO with an unknown depth (See Chart 1, L25)	59°04'10.9"N 063°26'07.3"W <i>DFO(6311132-12)</i>
Delete	subsurface Ocean Data Acquisition System ODAS/SADO with known depth of 5 metres (See Chart 1, L25)	59°05'21.3"N 063°26'42.0"W <i>DFO(6311132-13)</i>
Delete	subsurface Ocean Data Acquisition System ODAS/SADO with an unknown depth (See Chart 1, L25)	59°06'16.6"N 063°26'10.9"W <i>DFO(6311132-14)</i>
Delete	subsurface Ocean Data Acquisition System ODAS/SADO with an unknown depth (See Chart 1, L25)	59°05'47.6"N 063°23'57.0"W <i>DFO(6311132-15)</i>

5640 - Churchill Harbour - New Edition - 17-JUN-2005 - NAD 1983
17-MAY-2024

LNM/D. 10-MAY-2013

Add	legend (priv) against green port hand lighted pillar buoy QG, marked C1 (See Chart 1, Q70) This notice affects Electronic Navigational Chart: CA573227	58°47'31.5"N 094°12'23.0"W <i>LL(2606) DFO(6605244-01)</i>
Add	legend (priv) against red starboard hand lighted pillar buoy QR, marked C2 (See Chart 1, Q70) This notice affects Electronic Navigational Chart: CA573227	58°47'40.8"N 094°12'23.5"W <i>LL(2607) DFO(6605244-02)</i>
Add	legend (priv) against red starboard hand lighted pillar buoy FIR, marked C4 (See Chart 1, Q70) This notice affects Electronic Navigational Chart: CA573227	58°47'22.8"N 094°12'57.0"W <i>LL(2614) DFO(6605244-03)</i>
Add	legend (priv) against green port hand lighted pillar buoy FIG, marked C3 (See Chart 1, Q70) This notice affects Electronic Navigational Chart: CA573227	58°47'16.4"N 094°12'34.7"W <i>LL(2615) DFO(6605244-04)</i>
Add	legend (priv) against green port hand lighted pillar buoy FIG, marked C5 (See Chart 1, Q70) This notice affects Electronic Navigational Chart: CA573227	58°47'09.8"N 094°12'33.0"W <i>LL(2616) DFO(6605244-05)</i>
Add	legend (priv) against red starboard hand lighted pillar buoy FIR, marked C6 (See Chart 1, Q70) This notice affects Electronic Navigational Chart: CA573227	58°47'01.3"N 094°12'43.0"W <i>LL(2617) DFO(6605244-06)</i>

Add	legend (priv) against green port hand lighted pillar buoy FIG, marked C7 (See Chart 1, Q70) This notice affects Electronic Navigational Chart: CA573227	58°46'50.8"N 094°12'12.9"W <i>LL(2618) DFO(6605244-07)</i>
Add	legend (priv) against red starboard hand lighted pillar buoy FIR, marked C8 (See Chart 1, Q70) This notice affects Electronic Navigational Chart: CA573227	58°46'44.6"N 094°12'15.2"W <i>LL(2620) DFO(6605244-08)</i>
Add	legend (priv) against red starboard hand lighted pillar buoy FIR, marked C10 (See Chart 1, Q70) This notice affects Electronic Navigational Chart: CA573227	58°46'16.8"N 094°11'40.0"W <i>LL(2621) DFO(6605244-09)</i>
6021 - Lake Muskoka - Sheet/Feuille 1 - New Edition - 30-JUL-2004 - NAD 1983		
17-MAY-2024		LNm/D. 23-SEP-2022
Amend	EH12/2 to read EH12/4 against red starboard conical buoy (See Chart 1, Qb)	45°01'24.3"N 079°23'25.8"W <i>(D2024042) DFO(6605267-01)</i>
Add	green port hand spar buoy, marked EH11/1 (See Chart 1, Qc)	45°01'21.5"N 079°23'24.3"W <i>(D2024043) DFO(6605268-01)</i>
Add	green port hand spar buoy, marked EH11/3 (See Chart 1, Qc)	45°01'23.8"N 079°23'26.6"W <i>(D2024044) DFO(6605269-01)</i>
Add	red starboard hand spar buoy, marked EH12/2 (See Chart 1, Qb)	45°01'22.4"N 079°23'23.2"W <i>(D2024045) DFO(6605270-01)</i>
6240 - Red River / Rivière Rouge to/à Berens River - Sheet/Feuille 1 - New Edition - 16-JUL-2004 - Unknown		
17-MAY-2024		LNm/D. 30-JUN-2023
Delete	light, marked FI R (See Chart 1, P1)	50°42'01.2"N 096°33'50.0"W <i>(P2024017) LL(1574) DFO(6605251-01)</i>
Add	light, marked FI G (See Chart 1, P1)	50°42'01.2"N 096°33'50.0"W <i>(P2024017) LL(1574) DFO(6605251-02)</i>
6241 - Berens River to/à Nelson River - Sheet/Feuille 1 - New Edition - 27-MAY-2005 - Unknown		
10-MAY-2024		LNm/D. 29-DEC-2017
Delete	light with radar reflector, marked FI (See Chart 1, P1, S4)	53°00'05.0"N 097°40'29.0"W <i>(P2024014) LL(1611) DFO(6605245-01)</i>
Add	light with radar reflector, marked FI (See Chart 1, P1, S4)	53°00'07.8"N 097°39'02.3"W <i>LL(1611) DFO(6605245-02)</i>

6251 - Red River / Rivière Rouge to/à Gull Harbour - Sheet/Feuille 1 - New Edition - 26-MAY-2000 - NAD 1927

17-MAY-2024

LNMD. 28-JUL-2023

Delete light, marked FI R
(See Chart 1, P1) 50°41'43.0"N 096°33'37.0"W
(P2024017) LL(1574) DFO(6605251-01)

Add light, marked FI G
(See Chart 1, P1) 50°41'43.0"N 096°33'37.0"W
(P2024017) LL(1574) DFO(6605251-02)

6416 - Saline Island to/à Police Island Kilometre 730 / Kilomètre 810 - New Edition - 25-JAN-2008 - NAD 1983

24-MAY-2024

Delete depth of 12 metres
(See Chart 1, I10) 64°31'17.4"N 124°56'39.9"W
DFO(6605215-01)

Reposition green port hand can buoy
(See Chart 1, Qc) from 64°31'07.6"N 124°56'40.9"W
to 64°31'17.8"N 124°56'36.1"W
DFO(6605215-02)

8005 - Georges Bank - New Edition - 20-JUN-2003 - NAD 1983

31-MAY-2024

LNMD. 02-JUN-2023

Add submarine cable
(See Chart 1, L30.1) joining 42°31'32.0"N 068°25'28.9"W
42°33'28.5"N 067°48'49.1"W
and 42°20'19.0"N 067°18'24.0"W
DFO(6311128-01)

Section 3: Radio Aids to Marine Navigation Corrections

No corrections for this section.

Section 4: Canadian Sailing Directions Corrections

The following **Canadian Sailing Directions** volumes have recently been updated on the [Canadian Hydrographic Service website](#).

No.	Title
Atlantic Coast	
ATL 104	Cape North to Cape Canso (including Bras d'Or Lake)
ATL 105	Cape Canso to Cape Sable (including Sable Island)
Central Canada	
CEN 302	Lake Ontario
CEN 305	Lake Huron, St. Marys River, Lake Superior
CEN 308	Rideau Canal and Ottawa River

Each volume includes a section entitled "Record of Changes" which lists all updates that are incorporated during the current calendar year.

Section 5: List of Lights, Buoys and Fog Signals Corrections

The amendments are highlighted and deletions are crossed out. For general and region-specific information on the List of Lights, click on the following links: [Newfoundland and Labrador Coast](#), [Atlantic Coast](#), [Inland Waters](#) and [Pacific Coast](#).

No.	Name	Position ----- Latitude N. Longitude W.	Light Characteristics	Focal Height in m. above water	Nomi- nal Range	Description ----- Height in meters above ground	Remarks ----- Fog Signals
-----	------	--	--------------------------	--	-----------------------	--	---------------------------------

NEWFOUNDLAND AND LABRADOR COAST

PLACENTIA BAY (LL 14.4 – 79)

28.3	Travers Cove Point light buoy A11	47 17 41.4 053 58 33.5	Fl G 4s	Green, marked "A11".	Operates 24 h. Year round. Chart:4841 Edn 05/24 (N24-029)
73.3 H0361.5	Little St. Lawrence Wharf Light						Delete from list. Chart:4624 Edn 05/24 (N24-056)
73.8	Vestal Rock light and bell buoy PK4	Great Lawn Harbour. 46 54 32.9 055 32 38.0	Fl R 4s	Red, marked "PK4".	Seasonal. Chart:4625 Edn 05/24 (N24-004)
78.35	Little Green Island light buoy PG3						Delete from list. Chart:4642 Edn 05/24 (N24-061)
78.5	Little Green Island light buoy PG2						Delete from list. Chart:4642 Edn 05/24 (N24-063)

WEST COAST (LL 173 – 208.06)

174.2	Codroy Outer light buoy XY2	47 52 26.6 059 23 32.2	Fl R 4s	Red spar, marked "XY2".	Seasonal. Chart:4682 Edn 05/24 (N24-042)
176	Crabbes River Entrance light buoy XD2	48 13 15.2 058 51 57.5	Fl R 4s	Red spar, marked "XD2".	Seasonal. Chart:4022 Edn 05/24 (N24-043)
208.2 H156.1	Keppel Island Fog Signal						Delete from list. Chart:4679 Edn 05/24 (N24-064)

STRAIT OF BELLE ISLE (LL 211 – 234)

211.5	Port au Choix light buoy XP2	50 44 17.9 057 20 04.2	Fl R 4s	Red, marked "XP2".	Year round. Chart:4679 Edn 05/24 (N24-048)
229.1	Soldier Rock East Cardinal light buoy NPW	Two miles NE. of West St. Modeste. 51 37 30.6 056 37 01.0	VQ(3) W 5s	Black, yellow and black, marked "NPW".	Seasonal. Chart:4668 Edn 05/24 (N24-071)

Notices to Mariners – Monthly Eastern Edition
Section 5: List of Lights, Buoys and Fog Signals Corrections

No.	Name	Position ----- Latitude N. Longitude W.	Light Characteristics	Focal Height in m. above water	Nomi- nal Range	Description ----- Height in meters above ground	Remarks ----- Fog Signals
WHITE BAY (LL 235 – 269.2)							
249.9	Englee Harbour Outer East Cardinal light buoy KEN	50 42 59.0 056 06 13.0	Q(3) W 10s	Black, yellow and black, marked "KEN".	Operates 24 h. Seasonal. Chart:4583 Edn 05/24 (N24-011)
266.1	Sleepy Point West Cardinal light buoy KL	Off the point in LaScie. 49 58 21.2 055 36 35.9	Q(9) W 15s	Yellow, black and yellow, marked "KL".	Seasonal. Chart:4522 Edn 05/24 (N24-082)
267.2	La Scie Harbour Floating Dock						Delete from list. Chart:4522 Edn 05/24 (N24-041)
267.9 269.3	The Sisters West light buoy KC1	E. of Coachman's Cove Harbour entrance. 50 03 59.7 056 02 59.8	Fl G 4s	Green spar, marked "KC1".	Seasonal. Chart:4521 Edn 05/24 (N24-012)
268.1	Gentille Island Shoal light buoy KC3	Coachman's Harbour. 50 03 13.0 056 06 31.3	Fl G 4s	Green spar, marked "KC3".	Seasonal. Chart:4521 Edn 05/24 (N24-080)
NOTRE DAME BAY (LL 326 – 395)							
326.05	Shoe Cove Breakwater Light	49 54 50.4 055 33 31.3	Fl G 5s	4	Pipe tower.	Operates 24 h. Seasonal. Chart:4821 Edn 05/24 (N24-055)
327.6	Smiths Harbour Rock light buoy DSM4	49 44 03.2 055 57 40.7	Fl R 4s	Red spar, marked "DSM4".	Seasonal. Chart:4585 Edn 05/24 (N24-079)
336	Tom Cod Rock West Cardinal light buoy DBB	E. of Otter Island. 49 36 41.9 055 53 11.3	Q(9) W 15s	Yellow, black and yellow spar, marked "DBB".	Seasonal. Chart:4523 Edn 05/24 (N24-057)
346.3	Bed Rock Shoal light buoy DD2.2	N. of Fortune Harbour. 49 32 39.7 055 12 56.9	Fl R 4s	Red spar, marked "DD2.2".	Seasonal. Chart:4821 Edn 05/24 (N24-083)
352.15 359.9	Sunker Rock West Cardinal light buoy DSR	49 32 32.4 054 57 19.2	VQ(9) W 10s	Yellow, black and yellow spar, marked "DSR".	Seasonal. Chart:4863 Edn 05/24 (N24-018)
352.16 361.06	Seal Rock light buoy DBT2	Black Island. 49 32 16.9 054 58 08.4	Q R 1s	Red spar, marked "DBT2".	Seasonal. Chart:4864 Edn 05/24 (N24-019)
352.18 361.08	Western Rock # 1 light buoy DBT7	49 31 55.3 054 58 36.5	Fl G 4s	Green spar, marked "DBT7".	Seasonal. Chart:4864 Edn 05/24 (N24-020)

Notices to Mariners – Monthly Eastern Edition
Section 5: List of Lights, Buoys and Fog Signals Corrections

No.	Name	Position ----- Latitude N. Longitude W.	Light Characteristics	Focal Height in m. above water	Nomi- nal Range	Description ----- Height in meters above ground	Remarks ----- Fog Signals
352.19 361.09	Western Rock # 2 light buoy DBT6	Black Island. 49 31 55.8 054 58 37.1	Fl R 4s	Red spar, marked "DBT6".	Seasonal. Chart:4864 Edn 05/24 (N24-021)
352.2 361.095	Whale Back Rock North Cardinal light buoy DDN	49 31 10.3 054 58 24.1	Q W 1s	Black and yellow spar, marked "DDN".	Operates 24 h. Seasonal. Chart:4864 Edn 05/24 (N24-022)
355.074	Dildo Run light buoy DY5	49 31 35.8 054 41 30.0	Fl G 4s	Green spar, marked "DY5".	Seasonal. Chart:4863 Edn 05/24 (N24-014)
355.075	Dildo Run light buoy DY6	49 31 33.3 054 41 36.6	Fl R 4s	Red spar, marked "DY6".	Seasonal. Chart:4863 Edn 05/24 (N24-015)
356.1	Moreton's Harbour Outer light buoy DM3	49 34 23.8 054 51 48.4	Fl G 4s	Green spar, marked "DM3".	Seasonal. Chart:4863 Edn 05/24 (N24-016)
358.192	Twillingate (North Young Point) light buoy DT4	Twillingate Harbour. 49 39 13.9 054 46 07.3	Fl R 4s	Red spar, marked "DT4".	Seasonal (in place year round). Chart:4886 Edn 05/24 (N24-077)
358.193	Twillingate (Young Point) light buoy DT5	Twillingate Harbour. 49 39 12.0 054 46 04.6	Fl G 4s	Green spar, marked "DT5".	Seasonal. Chart:4886 Edn 05/24 (N24-017)
358.55	Twillingate light buoy DT13	Near the CCG base. 49 38 57.0 054 46 03.5	Fl G 4s	Green spar, marked "DT13".	Operates 24 h. Seasonal (in place year round). Chart:4886 Edn 05/24 (N24-078)
363 H0636	Bacalhao Island Light	S. side of island. 49 41 12.8 054 33 24.6	Fl W 10s	106.0	17	Square skeleton tower, red and white rectangular daymark. 10.7	Flash 0.2 s; eclipse 9.8 s. Year round. Horn – Blast 3 s; sil. 27 s. Horn points 331°48'. Chart:4862 Edn 05/24 (N24-060)
377.91 368.4 H0627	Change Island Southwest range	49 34 33.1 054 24 32.2	Oc R 6s	11.7	13	Square skeleton tower, white daymark with red vertical stripe. 5.3	Flash 4 s; eclipse 2 s. Visible in line of range. Year round.
377.92 368.5 H0627.1		130°24' 91.1 m from front.	Oc R 6s	18.1	13	Square skeleton tower, white daymark with red vertical stripe. 4.6	Flash 4 s; eclipse 2 s. Visible in line of range. Year round. Chart:4862 Edn 05/24 (N24-023, 024)
384.9 377.49	Vesuvius Rock West Cardinal light buoy DHV	SW. of Middle Dog Bay Island. 49 31 18.0 054 26 40.8	Q(9) W 15s	Yellow, black and yellow spar, marked "DHV".	Seasonal. Chart:4862 Edn 05/24 (N24-026)

Notices to Mariners – Monthly Eastern Edition
Section 5: List of Lights, Buoys and Fog Signals Corrections

No.	Name	Position ----- Latitude N. Longitude W.	Light Characteristics	Focal Height in m. above water	Nomi- nal Range	Description ----- Height in meters above ground	Remarks ----- Fog Signals
385.1 377.48	Gulnare Rocks East Cardinal light buoy DHG	SW. of Middle Dog Bay Island . 49 30 34.8 054 26 38.8	Q(3) W 10s	Black, yellow and black spar, marked "DHG".	Seasonal. Chart:4862 Edn 05/24 (N24-025)
BONAVISTA BAY (LL 396 – 449.5)							
402	South Rock South Cardinal light buoy JMS	W. of the rock. 49 28 44.9 053 54 08.6	Q(6) +LFI W 15s	Yellow and black, marked "JMS".	Seasonal. Chart:4530 Edn 05/24 (N24-084)
415.01 421.1	Halfway Reef light buoy JN1	East Coast. 49 12 44.2 053 29 17.7	Fl G 4s	Green spar, marked "JN1".	Seasonal. Chart:4858 Edn 05/24 (N24-034)
415.02 445.2	Newtown Outer light buoy JN2	49 12 07.5 053 30 15.5	Fl R 4s	Red spar, marked "JN2".	Seasonal. Chart:4857 Edn 05/24 (N24-033)
415.03 445.04	Newtown Outer light buoy JN3	49 12 06.1 053 30 22.6	Fl G 4s	Green spar, marked "JN3".	Seasonal. Chart:4857 Edn 05/24 (N24-030)
415.04 445.08	Newtown Inner light buoy JN4	49 12 09.2 053 30 23.3	Fl R 4s	Red spar, marked " JN4 ".	Seasonal. Chart:4857 Edn 05/24 (N24-031)
415.05 445.09	Newtown Inner light buoy JN5	49 12 06.8 053 30 25.3	Fl G 4s	Green spar, marked "JN5".	Seasonal. Chart:4857 Edn 05/24 (N24-032)
421	Pound Cove						Delete from list. Chart:4857 Edn 05/24 (N24-059)
442.16	Mustard Gull Island Rock light buoy JSB2	Sweet Bay. 48 31 41.8 053 38 14.2	Fl R 4s	Red spar, marked "JSB2".	Seasonal. Chart:4855 Edn 05/24 (N24-050)
TRINITY BAY (LL 450.1 – 471.51)							
465 H0514	Random Head Harbour Light	Motion Islands. 48 05 41.1 053 32 43.1	Fl W 5s	38.4	5	Red and white cylindrical tower. 10.2	Flash 1 s; eclipse 4 s. Operates 24 h. Year round. Chart:4852 Edn 05/24 (N24-075)
466.3	Clarenville Dolphin 1						Delete from list. Chart:4852 Edn 05/24 (N24-045)
466.4	Clarenville Dolphin 2						Delete from list. Chart:4852 Edn 05/24 (N24-047)
466.87	Long Cove Inner light buoy TL4						Delete from list. Chart:4850 Edn 05/24 (N24-065)

Notices to Mariners – Monthly Eastern Edition
Section 5: List of Lights, Buoys and Fog Signals Corrections

No.	Name	Position ----- Latitude N. Longitude W.	Light Characteristics	Focal Height in m. above water	Nomi- nal Range	Description ----- Height in meters above ground	Remarks ----- Fog Signals
468.7 H0508	Bloody Point Light and Fog Signal	47 54 53.8 053 21 34.0	Fl R 5s	11.4	9	Rectangular skeleton tower, red and white rectangular daymark. 4.2	Flash 1 s; eclipse 4 s. Year round. Horn – Blast 3 s; sil. 27 s. Chart:4850 Edn 05/24 (N24-072)
470.91	Thornlea Harbour Outer light buoy TS2						Delete from list. Chart:4851 Edn 05/24 (N24-066)
470.92	Thornlea Outer light buoy TS3						Delete from list. Chart:4851 Edn 05/24 (N24-067)
470.93	Thornlea Outer light buoy TS4						Delete from list. Chart:4851 Edn 05/24 (N24-068)
470.94	Thornlea Inner light buoy TS5						Delete from list. Chart:4851 Edn 05/24 (N24-069)
470.95	Thornlea Inner light buoy TS6						Delete from list. Chart:4851 Edn 05/24 (N24-070)
471 H0502	Old Perican Light	48 05 22.4 053 01 34.2	Fl W 5s	38.4	7	Square skeleton tower, red and white rectangular daymark. 6.9	Flash 1 s; eclipse 4 s. Year round. Chart:4850 Edn 05/24 (N24-074)
CONCEPTION BAY (LL 471.7 – 498.2)							
474.1	Karl's Gateway light buoy CV3						Delete from list. Chart:4850 Edn 05/24 (N24-053)
479 H0484	Harbour Grace Islands Light	47 42 42.4 053 08 30.5	Fl W 5s	41.4	7	Square skeleton tower, red and white rectangular daymark. 4.3	Flash 1 s; eclipse 4 s. Year round. Chart:4849 Edn 05/24 (N24-073)
488.5	Harbour Rock Shoal light buoy CH2	Colliers Bay. 47 30 00.0 053 11 21.6	Fl R 4s	Red, marked "CH2".	Operates 24 h. Seasonal. Chart:4847 Edn 05/24 (N24-040)
497.15 491.57	Kelligrews Point light buoy CW9	47 30 30.0 053 01 48.0	Fl G 4s	Green spar, marked "CW9".	Seasonal. Chart:4847 Edn 05/24 (N24-035)
498.5	Chimney Cove East Cardinal light buoy CCV						Delete from list. Chart:4847 Edn 05/24 (N24-036)

Notices to Mariners – Monthly Eastern Edition
Section 5: List of Lights, Buoys and Fog Signals Corrections

No.	Name	Position ----- Latitude N. Longitude W.	Light Characteristics	Focal Height in m. above water	Nomi- nal Range	Description ----- Height in meters above ground	Remarks ----- Fog Signals
-----	------	--	--------------------------	--	-----------------------	--	---------------------------------

CAPE ST. FRANCIS TO RENEWS (LL 499 – 516)

500 H0460	Chain Rock Light	St. John's Harbour. 47 34 00.7 052 41 15.7	Fl R 3s	6.0	4	Red and white octagonal tower. 4.1	Flash 0.5 s; eclipse 2.5 s. Year round. Chart:4846 Edn 05/24 (N24-039)
--------------	------------------	--	---------	-----	---	---------------------------------------	---

ATLANTIC COAST

BAY OF FUNDY, N.B. – WEST (LL 5.8 – 114)

5 H4164	Little River (U.S.)						Delete from list. Chart:4011 Edn 05/24
38 H4162	West Quoddy Head (U.S.)						Delete from list. Chart:4114 Edn 05/24
49.2 H4150	Dog Island (U.S.)						Delete from list. Chart:4114 Edn 05/24
58 H4134	St. Croix Island (U.S.)						Delete from list. Chart:4331 Edn 05/24
61 H4138	Whitlocks Mill (U.S.)						Delete from list. Chart:4331 Edn 05/24

BAY OF FUNDY, N.B. – EAST (LL 145 – 157)

147.15	LNG West Turn Point Sector Light	45 12 16.4 065 55 34.6	F W	22.8	13	Concrete block tower.	Private aid. Fl white from 81°45' to 82°45'; white from 82°45' to 83°15'; Fl White from 83°15' to 84°15'. Operates 24 h. Year round. Chart:4116 Edn 05/24 (F24-023)
147.16	LNG East Turn Point Sector Light	45 12 16.4 065 55 34.6	F W	22.8	10	Concrete block tower.	Private aid. Fl White from 23°30' to 25°30'; white 25°30' to 26°30'; Fl White from 26°30' to 28°30'. Operates 24 h. Year round. Chart:4116 Edn 05/24 (F24-024)

BAY OF FUNDY, N.S. (LL 163 – 268)

215 H3887	Whale Cove Wharf						Delete from list. Chart:4118 Edn 05/24 (F24-021)
--------------	------------------	--	--	--	--	--	--

Notices to Mariners – Monthly Eastern Edition
Section 5: List of Lights, Buoys and Fog Signals Corrections

No.	Name	Position ----- Latitude N. Longitude W.	Light Characteristics	Focal Height in m. above water	Nomi- nal Range	Description ----- Height in meters above ground	Remarks ----- Fog Signals
234 H3859	Belliveau Cove						Delete from list. Chart:4118 Edn 05/24 (F24-025)
NOVA SCOTIA, SOUTHEAST COAST (LL 327 – 684.02)							
409 H3730	Brooklyn Pier	Near outer end of breakwater. 44 02 40.4 064 41 30.3	Fl R 4s	7	Cylindrical mast. 5.0	Flash 1 s; eclipse 3 s. Operates at night only. Year round. Chart:4379 Edn 05/24 (F24-022)
416.52	Medway Harbour (West Berlin) light buoy UJ56	Liverpool. 44 04 04.6 064 35 03.7	Fl R 4s	Red spar, marked "UJ56".	Year round. Chart:N/A Edn 05/24 (F08-168)
416.525	West Berlin light buoy UJ57	44 04 04.9 064 35 02.0	Q G 1s	Green spar, marked "UJ57".	Operates 24 h. Year round. Chart:N/A Edn 05/24 (F24-027)
646 H3484	Berry Head	On E. point of Berry head, W. side of entrance to harbour. 45 11 28.8 061 18 39.9	LFl W 6s	12	White rectangular tower with red upper portion. 6.2	Year round. Chart:4233 Edn 05/24 (G24-055)
NORTHUMBERLAND STRAIT – EAST (LL 883.2 – 940.3)							
894.1 H1234.8	Arisaig West	45 45 37.1 062 10 21.3	LFl G 6s	10.4	5	Square skeleton tower, three-green and white square daymark with green square in centre. 9.6	Daymarks facing North, West and East. Flash 2 s; eclipse 4 s. Operates in night only. Privately maintained. Seasonal. Chart:4404 Edn 05/24 (G24-053)
PRINCE EDWARD ISLAND (LL 942 – 1084.7)							
1032.35	Miminegash East Cardinal light buoy DPB	46 52 51.2 064 14 19.4	Q(3) W 10s	Black, yellow and black spar, marked "DPB".	Operates 24 h. Seasonal. Chart:4906 Edn 05/24 (G24-076)
1046.045	St. Peters Harbour light buoy JD11	46 26 35.5 062 44 24.9	Fl G 4s	Green, marked "JD11".	Operates 24 h. Seasonal. Chart:4425 Edn 05/24 (G24-080)
1046.11	St. Peters Harbour light buoy JD15	46 26 25.8 062 44 02.8	Fl G 4s	Green, marked "JD15".	Operates 24 h. Seasonal. Chart:4425 Edn 05/24 (G24-078)
1046.35	St. Peters Harbour light buoy JD21.5	46 26 14.5 062 42 59.1	Fl G 4s	Green, marked "JD21.5".	Operates 24 h. Seasonal. Chart:4425 Edn 05/24 (G24-079)

Notices to Mariners – Monthly Eastern Edition
Section 5: List of Lights, Buoys and Fog Signals Corrections

No.	Name	Position ----- Latitude N. Longitude W.	Light Characteristics	Focal Height in m. above water	Nomi- nal Range	Description ----- Height in meters above ground	Remarks ----- Fog Signals
1054.24	North Rustico light buoy JK6	46 27 25.2 063 17 14.4	Q R 1s	Red, marked "JK6".	Seasonal. Chart:N/A Edn 05/24 (G24-071)
1054.4	Rustico light buoy JK9	46 27 24.2 063 17 11.8	Q G 1s	Green, marked "JK9".	Buoy may be repositioned due to shifting channel. Seasonal. Chart:N/A Edn 05/24 (G24-065)
1054.51	North Rustico light buoy JK8	46 27 20.2 063 18 15.8	Fl R 4s	Red, marked "JK8".	Seasonal. Chart:N/A Edn 05/24 (G24-072)
1054.511	North Rustico light buoy JK10	46 27 25.2 063 17 24.6	Fl R 4s	Red, marked "JK10".	Seasonal. Chart:N/A Edn 05/24 (G24-073)
1061 H1129	Cape Tryon	On extremity of cape. 46 32 02.3 063 30 21.9	LFl W 6s	33.4	11	White tower with red upper portion. 12.4	Flash 2 s; eclipse 4 s. Seasonal. Chart:4467 Edn 05/24 (G24-052)
1075.4	Cascumpec light buoy JV9	46 48 08.5 064 01 37.6	Q G 1s	Green spar, marked "JV9".	Buoy may be repositioned due to shifting channel. Seasonal. Chart:4492 Edn 05/24 (G24-049)
1075.6	Alberton Harbour Middle Ground light buoy JV15	Cascumpec. 46 48 02.4 064 02 30.0	Q G 1s	Green spar, marked "JV15".	Buoy may be repositioned due to shifting channel. Seasonal. Chart:4492 Edn 05/24 (G24-050, 062)
<u>NORTHUMBERLAND STRAIT – WEST (LL 1085 – 1165.9)</u>							
1125.23	Buctouche Harbour light buoy XV23	46 28 35.1 064 40 00.8	Q G 1s	Green, marked "XV23".	Buoy may be repositioned due to shifting channel. Seasonal. Chart:N/A Edn 05/24 (G24-077)
1141	Richibucto Floating Dock Light	46 40 44.0 064 51 39.5	Fl G 4s	2	Cylindrical mast, green and white square daymark with black square in centre.	Private aid. Flash 1 s; eclipse 3 s. Seasonal. Chart:4909 Edn 05/24 (G24-070)
<u>GULF OF ST. LAWRENCE (LL 1477.5 – 1617)</u>							
1495.5	Pointe-Basse	Les Îles-de-la-Madeleine, end of W. breakwater. 47 23 20.5 061 47 29.8	Iso G 2s	9.1	4	Square skeleton tower. 8.2	Omnidirectional. Seasonal. Chart:4950 Edn 05/24 (Q24-138)
1500.1	Cape Breton scientific light buoy IML-17	10 nm off Mackenzie Point. 46 57 00.0 061 01 00.0	Fl(5) Y 20s	Yellow ODAS, marked "IML-17".	Seasonal. Chart:4022 Edn 05/24 (Q24-137)

Notices to Mariners – Monthly Eastern Edition
Section 5: List of Lights, Buoys and Fog Signals Corrections

No.	Name	Position ----- Latitude N. Longitude W.	Light Characteristics	Focal Height in m. above water	Nomi- nal Range	Description ----- Height in meters above ground	Remarks ----- Fog Signals
1502.2	Havre Aubert light buoy YK5	Cap Gridley. 47 14 15.3 061 49 27.1	Q G 1s	Green, marked "YK5".	(Winter spar.) Year round. Chart:4957 Edn 05/24 (Q24-149)
1503	Havre Aubert light buoy YK12	Cap Gridley. 47 14 11.2 061 49 33.4	Fl R 4s	Red, marked "YK12".	(Winter spar.) Year round. Chart:4957 Edn 05/24 (Q24-150)
1516	Port-Menier fairway light and bell buoy MENIER	Anticosti Island, S. of Baie Gamache. 49 46 13.5 064 20 37.3	Mo(A) W 6s	Red and white vertical stripes, marked "MENIER".	Seasonal. Chart:4430 Edn 05/24 (Q24-139)

LAC SAINT-JEAN (LL 1823.55 – 1823.77)

1823.65	Saint-Prime	48 35 59.3 072 19 19.8	Fl Y 4s	Mast.	Private aid. Operates 24 h. Year round. Chart:6100 Edn 05/24 (Q24-141)
---------	-------------	---------------------------	---------	-------	-------	-------	--

ST. LAWRENCE RIVER, RIVIÈRE DU LOUP – SOREL (LL 1823.8 – 2185.1)

1962.1	Marina de la Chaudière Wharf B Light	N. end of wharf B. 46 44 33.2 071 16 42.3	F W	Mast.	Private aid. Seasonal (in place year round). Chart:1316 Edn 05/24 (Q24-142)
1962.2	Marina de la Chaudière Wharf B Light	46 44 31.7 071 16 40.5	F W	Mast.	Private aid. Seasonal (in place year round). Chart:1316 Edn 05/24 (Q24-143)
1962.4	Marina de la Chaudière Wharf A Light	N. end of wharf A. 46 44 35.0 071 16 41.1	F B	Mast.	Private aid. Seasonal (in place year round). Chart:1316 Edn 05/24 (Q24-144)
1962.6	Marina de la Chaudière Wharf A Light	S. end of wharf A. 46 44 32.1 071 16 37.1	F B	Mast.	Private aid. Seasonal (in place year round). Chart:1316 Edn 05/24 (Q24-145)
1962.8	Marina de la Chaudière Wharf D Light	N. end of wharf D. 46 44 29.0 071 16 36.1	F W	Mast.	Private aid. Seasonal (in place year round). Chart:1316 Edn 05/24 (Q24-146)
1962.9	Marina de la Chaudière Wharf D Light	S. end of wharf D. 46 44 27.7 071 16 34.8	F W	Mast.	Private aid. Seasonal (in place year round). Chart:1316 Edn 05/24 (Q24-147)

RIVIÈRE RICHELIEU (LL 2190 – 2271.92)

2271.8	Philipsburg light buoy	Marks intake pipe. 45 01 14.2 073 20 38.3	Fl R 4s	Red and black horizontally banded spar.	Private aid. Year round. Chart:14781 (U.S.) Edn 05/24 (Q24-140)
--------	---------------------------	---	---------	-------	-------	--	--

Notices to Mariners – Monthly Eastern Edition
Section 5: List of Lights, Buoys and Fog Signals Corrections

No.	Name	Position ----- Latitude N. Longitude W.	Light Characteristics	Focal Height in m. above water	Nomi- nal Range	Description ----- Height in meters above ground	Remarks ----- Fog Signals
-----	------	--	--------------------------	--	-----------------------	--	---------------------------------

INLAND WATERS

LAKE ERIE (LL 552 – 623)

613	Kingsville Entrance range	42 01 36.7 082 44 04.0	F G	6.8	9	Mast, red triangular daymark with black vertical stripe. 5.5	Year round. (Not maintained over winter.)
614		308°03' 98.7 m from front.	F G	14.8	9	Square skeleton tower, red triangular daymark with black vertical stripe. 13.0	Year round. (Not maintained over winter.) Chart:2181 Edn 05/24 (B24-007, 008)

LAKE HURON (LL 768 – 813)

806.6	South Baymouth light buoy JS6	45 33 08.6 082 00 58.1	Fl R 4s	Red spar, marked "JS6".	Seasonal (in place year round). Chart:2273 Edn 05/24 (D24-049)
806.9	South Baymouth light buoy JS9	45 33 25.5 082 00 44.0	Fl G 4s	Green spar, marked "JS9".	Seasonal (in place year round). Chart:2273 Edn 05/24 (D24-050)

GEORGIAN BAY (LL 814 – 982)

862.1	Candlemas Shoal light buoy M14	Midland Channel. 44 49 22.0 079 52 44.1	Fl R 4s	Red spar, marked "M14".	Seasonal (in place year round). Chart:2241 Edn 05/24 (D24-040)
863.5	Ross Shoal light buoy M15	W. of shoal. 44 48 24.7 079 51 54.7	Fl G 4s	Green spar, marked "M15".	Seasonal (in place year round). Chart:2241 Edn 05/24 (D24-041)

LAKE SUPERIOR (LL 1082 – 1161)

1144.3	Kaministiquia River Entrance Inner	N. side of old elevator wharf. 48 23 38.3 089 12 51.2	Fl R 5s	7.7	7	Cylindrical mast, red and white rectangular daymark. 6.1	Flash 1 s; eclipse 4 s. Seasonal. Chart:2314 Edn 05/24
--------	--	--	---------	-----	---	--	---

LAC SAINT-LOUIS – SECONDARY CHANNELS (LL 1193 – 1226.95)

1216.3	Light buoy AD28	Off Beaconsfield. 45 24 41.7 073 52 00.0	Fl R 4s	Red, marked "AD28".	Seasonal. Chart:1430 Edn 05/24
--------	-----------------	--	---------	-------	-------	---------------------	--

MUSKOKA LAKES (LL 1377.8 – 1406)

1386	High Island	On SE. end of Gibraltar Island. 45 03 36.3 079 30 04.8	Fl W 4s	7.0	4	Cylindrical mast, red and white rectangular daymark. 6.1	Seasonal. Chart:6021 Edn 05/24
1391	Jannacks Narrows	E. corner of Bala Park Island. 45 00 32.3 079 35 01.7	Fl W 4s	5.7	4	Cylindrical mast, red and white rectangular daymark. 5.1	Seasonal. Chart:6021 Edn 05/24

Notices to Mariners – Monthly Eastern Edition
Section 5: List of Lights, Buoys and Fog Signals Corrections

No.	Name	Position ----- Latitude N. Longitude W.	Light Characteristics	Focal Height in m. above water	Nomi- nal Range	Description ----- Height in meters above ground	Remarks ----- Fog Signals
1404	Lighthouse Shoal	On shoal S. of Rosseau. 45 14 47.2 079 38 18.2	Fl W 4s	9.1	4	White square tower with red upper portion.	Seasonal. Chart:6022 Edn 05/24
1404.8	Elsinore Island light buoy N16	Off N. end of island. 45 09 43.4 079 43 39.7	Fl R 4s	Red spar, marked "N16".	Seasonal (in place year round). Chart:6022 Edn 05/24
LAKE OF BAYS (LL 1410 – 1419)							
1412.1	Raynor Shoal light buoy AC1	S. end of shoal. 45 15 33.8 078 58 18.5	Fl G 4s	Green spar, marked "AC1".	Seasonal (in place year round). Chart:6023 Edn 05/24
1413	Turners Rock	On rock, SE. point of Pancake Island. 45 15 12.0 078 59 51.0	Fl W 4s	6.2	4	Cylindrical mast, red and white rectangular daymark. 5.5	Seasonal. Chart:6023 Edn 05/24
LAKE NIPISSING (LL 1420 – 1441.4)							
1422	Callander Entrance fairway light buoy JC	NE. of Deepwater Point. 46 12 51.7 079 28 51.5	Mo(A) W 6s	Red and white vertical stripes spar, marked "JC".	Seasonal (in place year round). Chart:6035 Edn 05/24 (D24-047)
1422.5	Victoria Island light buoy J11/1	Entrance to Callander Bay. 46 11 57.1 079 25 43.4	Fl G 4s	Green spar, marked "J11/1".	Seasonal (in place year round). Chart:6035 Edn 05/24 (D24-046)
LAKE OF THE WOODS (LL 1470 – 1514.9)							
1501	Dawson Narrows, East Entrance	At NE. side of small island. 49 06 03.0 094 30 35.8	Fl W 4s	7.6	6	Cylindrical mast, red and white rectangular daymark with green square in centre. 6.4	Visible on range line. Seasonal. Chart:6215 Edn 05/24
RED RIVER (LL 1558.8 – 1561.9)							
1558.84	St. Andrews (Lockport) range	N. entrance. 50 05 05.3 096 56 29.1	F R	16.9	2	Cylindrical mast, white daymark with orange vertical stripe. 6.6	Year round.
1558.85		211°28' 67.1 m from front.	F R	24.8	2	Cylindrical mast, white daymark with orange vertical stripe. 8.7	Year round. Chart:6242 Edn 05/24
LAKE WINNIPEG (LL 1563.1 – 1625)							
1583.1	Gull Harbour Wharf	On outer end of wharf. 51 11 50.0 096 37 02.0	Fl R 4s	7.0	Cylindrical mast, red and white rectangular daymark. 6.1	Seasonal. Chart:6249 Edn 05/24
1583.5	Deer Island	SW. end of island. 51 15 39.0 096 37 03.0	Fl W 4s	7.6	6	Cylindrical mast, red and white rectangular daymark. 6.9	Seasonal. Chart:6248 Edn 05/24

Notices to Mariners – Monthly Eastern Edition
Section 5: List of Lights, Buoys and Fog Signals Corrections

No.	Name	Position ----- Latitude N. Longitude W.	Light Characteristics	Focal Height in m. above water	Nomi- nal Range	Description ----- Height in meters above ground	Remarks ----- Fog Signals
1600	Cox Reef	On the reef, E. of Berens Island. 52 19 18.0 097 13 01.0	Fl W 4s	15.2	7	Skeleton tower, white daymark, facing S. and red and white daymark facing E.	Seasonal. Chart:6268 Edn 05/24
1612	Little Sandy Island	On centre of NW. island of Sandy Islands. 52 59 00.0 098 00 20.0	Fl W 4s	27.1	7	Skeleton tower. 18.9	Seasonal. Chart:6241 Edn 05/24
1619.7	Purvis Island range	Nelson River entrance. 53 42 21.8 097 51 22.0	F G	9.9	15	Cylindrical mast, white daymark with orange vertical stripe. 5.1	Visible in line of range. Seasonal.
1619.8		026° 00' 150 m from front.	F G	12.4	15	Cylindrical mast, white daymark with orange vertical stripe. 6.4	Visible in line of range. Seasonal. Chart:6258 Edn 05/24
1621.5	Warren Landing Wharf	S. end of wharf. 53 41 50.0 097 52 09.0	Fl R 4s	8.8	6	Cylindrical mast red and white rectangular daymark. 4.9	Seasonal. Chart:6258 Edn 05/24
MACKENZIE RIVER AND BAY (LL 1716.96 – 2540)							
1812	Swimming Point (Mile 1050.2) range	On W. shore at exploration camp, danger zone 7. 69 06 00.0 134 23 30.0	F W	17.1	15	Square skeleton tower, red daymark with white vertical stripe. 6.1	Visible in line of range. Seasonal.
1813		080° 00' 101.8 m from front.	F W	29.3	14	Tripod skeleton tower, red daymark with white vertical stripe. 18.3	Visible in line of range. Seasonal. Chart:6430 Edn 05/24
2510	Tuktoyaktuk Peninsula range 2	On E. entrance. 69 27 54.4 132 59 20.4	F W	11.6	16	Tripod skeleton tower, red daymark with white vertical stripe. 9.1	Visible in line of range. Seasonal.
2511 H0012.4		099°19' 274.3 m from front.	F W	17.7	16	Tripod skeleton tower, red daymark with white vertical stripe. 13.7	Visible in line of range. Seasonal. Chart:7685 Edn 05/24
2512 H0012.8	Tuktoyaktuk Harbour Inner range 4	In harbour. 69 27 40.8 132 58 49.7	F W	4.9	16	Tripod skeleton tower, red daymark with white vertical stripe. 6.1	Visible in line of range. Seasonal.
2513 H0012.81		357°06' 121.9 m from front.	F W	12.9	16	Tripod skeleton tower, red daymark with white vertical stripe. 9.1	Visible in line of range. Seasonal. Chart:7685 Edn 05/24

Notices to Mariners – Monthly Eastern Edition
Section 5: List of Lights, Buoys and Fog Signals Corrections

No.	Name	Position ----- Latitude N. Longitude W.	Light Characteristics	Focal Height in m. above water	Nomi- nal Range	Description ----- Height in meters above ground	Remarks ----- Fog Signals
2514 H0012.6	Tuktoyaktuk East Entrance range 3	At E. entrance. 69 27 17.6 132 58 29.7	F W	14.6	16	Square skeleton tower, red daymark with white vertical stripe. 4.6	Visible in line of range. Seasonal.
2515 H0012.7		134°08' 124.6 m from front.	F W	22.9	16	Square skeleton tower, red daymark with white vertical stripe. 9.1	Visible in line of range. Seasonal. Chart:7685 Edn 05/24
2517	Tuft Point Light	On point. 69 44 26.5 132 28 58.6	Fl W 4s	21.5	7	Tripod skeleton tower, white daymark with red vertical stripe. 9.1	Radar reflector. Seasonal (in place year round). Chart:7663 Edn 05/24
HUDSON STRAIT AND BAY (LL 2545 – 2621)							
2552 H0036.4	Broomfield Island Racon - . (N) X & S Bands	55 40 24.5 079 14 17.9	Fl R 6s	44.0	8	Square skeleton tower, orange rectangular daymark.	Flash 1 s; eclipse 5 s. Radar reflector. Seasonal (in place year round). Chart:5707 Edn 05/24
2554 H0040	Nottingham Island Light Racon - . (N) X & S Bands	On S. extremity of island. 63 05 10.0 077 57 00.0	Fl W 6s	28.0	8	Square tower, orange rectangular daymark with black vertical stripe. 12.4	Flash 1 s; eclipse 5 s. Omnidirectional. Radar reflector. Seasonal (in place year round). Chart:5449 Edn 05/24
2554.4 H0040.3	Salluit Breakwater (Starboard Entrance)	W. breakwater. 62 12 34.8 075 39 04.6	Fl R 4s	3.2	2	Black mast. 1.4	Private aid. Maintained by the Community of Inuit Salluit. Seasonal. Chart:5458 Edn 05/24
2554.6 H0040.4	Salluit Breakwater (Port Entrance)	E. breakwater. 62 12 34.4 075 38 58.7	Fl G 4s	3.5	2	Black cylindrical mast. 1.3	Private aid. Maintained by the Community of Inuit Salluit. Seasonal. Chart:5458 Edn 05/24
2555 H0041	Arctic Island	On centre of island. 62 14 30.2 074 45 40.1	Fl W 6s	29.6	Square tower, orange rectangular daymark. 6.7	Flash 1 s; eclipse 5 s. Omnidirectional. Seasonal (in place year round). Chart:5457 Edn 05/24
2556 H0042	Charles Island West End	62 41 48.5 074 36 05.7	Fl W 6s	20.7	Square tower, orange rectangular daymark. 16.1	Flash 1 s; eclipse 5 s. Omnidirectional. Radar reflector. Seasonal (in place year round). Chart:5450 Edn 05/24
2558 H0048	Wales Island	E. extremity of island. 61 51 39.3 071 58 00.1	Fl W 6s	83.2	Square skeleton tower, orange rectangular daymark. 6.7	Flash 1 s; eclipse 5 s. Omnidirectional. Radar reflector. Seasonal (in place year round). Chart:5390 Edn 05/24

Notices to Mariners – Monthly Eastern Edition
Section 5: List of Lights, Buoys and Fog Signals Corrections

No.	Name	Position ----- Latitude N. Longitude W.	Light Characteristics	Focal Height in m. above water	Nomi- nal Range	Description ----- Height in meters above ground	Remarks ----- Fog Signals
2560 H0052	Cape Hopes Advance	61 04 41.8 069 33 28.4	Fl W 6s	8	Square skeleton tower, orange rectangular daymark.	Flash 1 s; eclipse 5 s. Omnidirectional. Radar reflector. Seasonal. Chart:5452 Edn 05/24
2566 H0053.4	Cape Poillon range	Frobisher Bay. 63 08 02.9 067 51 48.4	Iso W 2s	84.0	14	Square tower, orange daymark with black vertical stripe.	Visible in line of range. Operates 24 h. Seasonal (in place year round).
2567 H0053.41		149°28' 3427.9 m from front.	Iso W 2s	203.5	14	Square tower, orange daymark.	Visible in line of range. Operates 24 h. Seasonal (in place year round).
							Chart:7125 Edn 05/24
2568 H0053.5	Cape Poillon West	Pike-Resor Channel, Frobisher Bay. 63 08 56.9 067 54 34.4	Fl Y 6s	38.9	8	Square tower, orange rectangular daymark.	Flash 1 s; eclipse 5 s. Omnidirectional. Seasonal (in place year round).
							Chart:7125 Edn 05/24
2569 H0054	Basset Point	Frobisher Bay, Pike- Resor Channel, on Pike Island. 63 12 50.5 067 57 20.8	Fl R 5s	18.3	8	Square tower, orange rectangular daymark.	Flash 1 s; eclipse 4 s. Omnidirectional. Seasonal (in place year round).
							Chart:7125 Edn 05/24
2570 H0054.2	Pike Island range 1	Frobisher Bay, Pike- Resor Channel. 63 13 54.4 067 59 27.8	Iso W 2s	28.0	Square tower, orange daymark with black vertical stripe.	Visible in line of range. Operates 24 h. Seasonal (in place year round).
2571 H0054.21		329°28' 385.4 m from front.	Iso W 2s	44.4	8	Square tower, orange daymark with black vertical stripe.	Visible in line of range. Operates 24 h. Seasonal (in place year round).
							Chart:7125 Edn 05/24
2572 H0054.3	Pike Island No. 2 range	63 15 11.2 068 01 20.3	Iso W 2s	20.9	14	Square tower, orange daymark with black vertical stripe.	Visible in line of range. Operates 24 h. Seasonal (in place year round).
2573 H0054.31		146°04' 2463.2 m from front.	Iso W 2s	52.0	14	Square tower, orange daymark with black vertical stripe.	Visible in line of range. Operates 24 h. Seasonal (in place year round).
							Chart:7125 Edn 05/24
2574 H0054.4	Quadrifid Island	Frobisher Bay, Pike- Resor Channel, on Quadrifid the island. 63 18 20.7 068 07 20.7	Fl G 5s	33.6	7	Square tower, orange rectangular daymark.	Flash 1 s; eclipse 4 s. Omnidirectional. Seasonal (in place year round).
							Chart:7125 Edn 05/24
2575 H0054.6	Lapointe Rock	63 21 42.9 068 13 56.9	Fl W 6s	14.0	8	Square tower, orange rectangular daymark.	Flash 1 s; eclipse 5 s. Omnidirectional. Seasonal (in place year round).
							Chart:7125 Edn 05/24

Notices to Mariners – Monthly Eastern Edition
Section 5: List of Lights, Buoys and Fog Signals Corrections

No.	Name	Position ----- Latitude N. Longitude W.	Light Characteristics	Focal Height in m. above water	Nomi- nal Range	Description ----- Height in meters above ground	Remarks ----- Fog Signals
2576 H0056.4	Monument Island	On summit of island. 63 41 54.3 068 30 11.3	Fl R 6s	41.4	8	Square tower, orange rectangular daymark. 9.5	Flash 1 s; eclipse 5 s. Omnidirectional. Seasonal (in place year round). Chart:7127 Edn 05/24
2584 H0056	Frobisher Landing	Koojesse Inlet. 63 44 16.3 068 31 34.7	Fl Y 6s	5.0	7	Square tower, orange rectangular daymark. 5.2	Flash 1 s; eclipse 5 s. Omnidirectional. Seasonal (in place year round). Chart:7127 Edn 05/24
2585 H0056.2	Koojesse Inlet range	Centre of the city. 63 44 43.9 068 31 24.3	F G	13.1	17	Square skeleton tower, red daymark with black vertical band. 13.2	Visible in line of range. Operates 24 h. Seasonal (in place year round).
2586 H0056.21		344°01' 419.5 m from front.	F G	30.3	17	Square skeleton tower, red daymark with black vertical band. 16.4	Visible in line of range. Operates 24 h. Seasonal (in place year round). Chart:7127 Edn 05/24
2600 H35.4	Mission Lake	Chesterfield Inlet. 63 20 36.8 090 41 13.9	Fl W 6s	21.7	8	Square mast, orange rectangular daymark. 9.7	Flash 1 s; eclipse 5 s. Radar reflector. Seasonal (in place year round). Chart:5620 Edn 05/24
2601 H0024	Dunne Foxe Island	On easternmost island. 62 15 42.3 091 59 19.5	Fl W 6s	21.7	8	Square skeleton tower. 10.0	Flash 1 s; eclipse 5 s. Seasonal (in place year round). Chart:5630 Edn 05/24
2602 H25	Walrus Island Light Racon - - - (Y) X & S Bands	Mistake Bay. 61 57 59.4 092 28 41.1	Fl W 6s	29.0	8	Square skeleton mast, orange rectangular daymark. 11.0	Flash 1 s; eclipse 5 s. Seasonal. Chart:5642 Edn 05/24
2603 H0025.5	Sentry Island Light (Arviat, NWT) Racon - - - (C) X & S Bands	Western Hudson Bay. 61 09 35.6 093 52 14.6	Fl W 6s	35.0	8	Square skeleton mast. 18.4	Flash 1 s; eclipse 5 s. Seasonal (in place year round). Chart:5641 Edn 05/24
2612 H0027	Churchill range Racon - - - (G) X & S Bands	58 47 01.0 094 13 59.2	F W	23.0	15	Tripod skeleton tower, orange daymark.	Operates 24 h. Seasonal (in place year round).
2613 H27.4		236°25' 1632.8 m from front.	F W	47.1	15	Tripod skeleton tower, orange daymark with black vertical stripe.	Operates 24 h. Seasonal (in place year round). Chart:5640 Edn 05/24