



# NOTICES TO MARINERS

## EASTERN EDITION

Published monthly by the



## CANADIAN COAST GUARD

### CONTENTS

	<b>Page</b>
Section 1 Safety and General Information .....	1 - 4
Section 2 Chart Corrections .....	5 - 9
Section 3 Radio Aids to Marine Navigation Corrections .....	10 - 11
Section 4 Sailing Directions and Small Craft Guide Corrections .....	12 - 13
Section 5 Light List Corrections .....	14 - 20

Marine Programs Directorate  
Aids to Navigation



Internet: <http://www.notmar.com>

## EXPLANATORY NOTES

**Geographical positions** refer directly to the graduations of the largest scale Canadian Hydrographic chart unless otherwise indicated.

**Bearings** refer to the true compass and are measured clockwise from 000° (North) clockwise to 359°; those relating to lights are from seaward.

**Visibility** of lights is that in clear weather.

**Depths** - The units used for soundings (metres, fathoms or feet) are stated in the title of each chart.

**Elevations** are normally given above Higher High Water, Large Tides unless otherwise indicated.

**Distances** may be calculated as follows:

1 nautical mile	= 1 852 metres (6,076.1 feet)
1 statute mile	= 1 609.3 metres (5,280 feet)
1 metre	= 3.28 feet

**Temporary & Preliminary Notices** are indicated by a (T) or a (P) before the chart action. Please note that Nautical charts are not hand amended by the Canadian Hydrographic Service for Temporary (T) and Preliminary (P) Notices. It is recommended that mariners chart these corrections in pencil. Listing of charts affected by Temporary and Preliminary Notices are revised and promulgated quarterly in Section 1 of the Monthly Edition.

**Please note that, in addition to the temporary and preliminary changes normally advertised as (T) and (P) Notices, there are a significant number of permanent changes to navigational aids that have been advertised as Preliminary Notices to Mariners while charts are being updated for new editions.**

**Marine Information Report & Suggestion Sheet** - Mariners are requested to notify the responsible authorities when new or suspected dangers to navigation are discovered, changes observed in aids to navigation or corrections to publications are seen to be necessary. Such communications can be made using the *Marine Information Report & Suggestion Sheet* inserted on the last page of each monthly edition of *Notices to Mariners*.

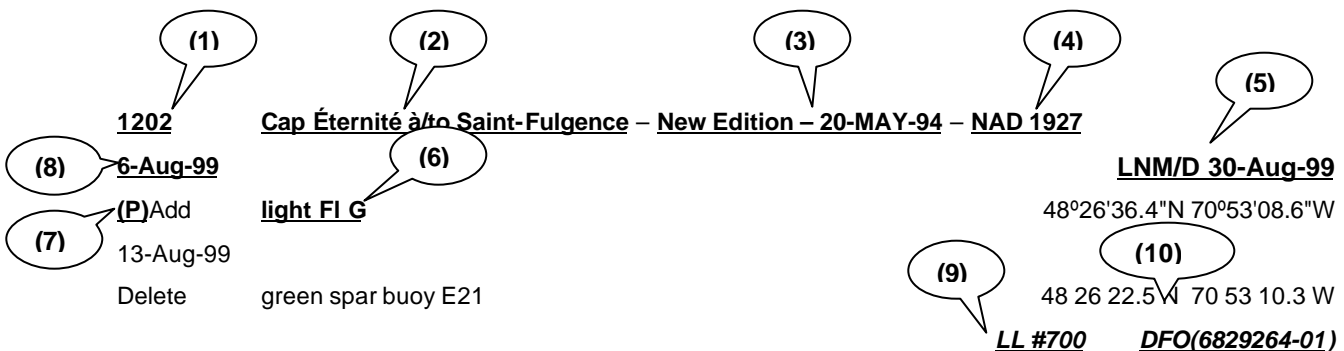
**Monthly edition of Notices to Mariners** - *Notices to Mariners* are issued free of charge on a monthly basis. Mariners now have a choice between specific *Regional* issue(s) they wish to receive. Requests to be placed on or removed from the mailing list should be made by using the form inserted on page *xiii* of each monthly edition. Notification of changes to the mailing addresses, regional issues and/or number of copies required should also be transmitted by means of this form.

**Canadian Nautical Charts & Publications** - A source list of *Canadian Nautical Charts & publications* is published in *Notice No. 14* of the current *Annual Edition of Notices to Mariners*. The source supply and the prices effective at the time of printing are listed. This list is periodically updated in the monthly edition of *Notices to Mariners*.

**NOTE: Cette publication est aussi disponible en français.**

## CHART CORRECTIONS - SECTION 2

Corrections to nautical charts will be listed in numeric order by chart number. Each chart correction listed applies only to that particular chart. Related charts, if any, will have their own specific correction listed separately. Users should also refer to CHS Chart 1 Symbols, Abbreviations Terms for additional information pertaining to the correction of charts. The illustration below describes the elements that will comprise a typical Section 2 chart correction.



- 1 - Chart Number
- 2 - Chart Title
- 3 - Chart's latest New Edition date
- 4 - Horizontal Chart Datum
- 5 - Last Correction

- 6 - Chart action
- 7 - Notice type
- 8 - Weekly chart correction date
- 9 - List of light number
- 10 - Record reference number

The last correction number is identified with the **L**NM/D or **L**ast **N**otice to **M**ariners Number / **D**ate. This number is expressed in either old notice number format (ex.: 594/99) or in day-month-year format which is the date known as the weekly chart correction date shown in the above diagram as item (8).

## ADVISORY

### NOTICES TO SHIPPING (WRITTEN AND BROADCAST)

The Canadian Coast Guard is implementing a number of changes to the aids to navigation system in Canada.

These changes are advertised as Notices to Shipping (Broadcast and Written) by the Canadian Coast Guard and are followed up with Notices to Mariners, then charts are updated by hand correction, reprints or new editions.

The publication of Notices to Mariners and chart revisions are being delayed by the volume of changes that are taking place.

Mariners are advised that all relevant Written Notices to Shipping should be kept until superseded by Notices to Mariners or through revised charts issued by the Canadian Hydrographic Service.

Written Notices to Shipping are published weekly and are available from local Canadian Coast Guard Offices.

The Canadian Hydrographic Service is reviewing the impact of these changes with the Canadian Coast Guard and together we are preparing an action plan on the issuing of chart revisions.

For further information contact your local Canadian Coast Guard office.

#### Newfoundland

St. John's MCTS Centre  
Phone: (709) 772-2083  
Fax: (709) 772-5369

#### Maritimes

Maritimes Regional Operations Centre  
Toll Free in Maritimes 1-800-565-1633  
Phone: (902) 426-6030  
Fax: (902) 426-6334  
<http://www.mar.dfo.mpo.gc.ca/cg/ops/roc.htm>  
Website E-Mail: ROCWeb@mar.dfo-mpo.gc.ca

#### Quebec

Quebec Regional Operations Centre GC\SO\COR  
Operational Information Officer  
Phone: (418) 648-5410  
Fax: (418) 648-7244  
E-Mail: OPSAVIS@dfo-mpo.gc.ca

#### Central & Arctic

Sarnia MCTS Centre  
Toll Free in Ontario 1-800-265-0237  
Phone: (519) 337-6360  
Fax: (519) 337-2498

#### Pacific

Pacific Regional Marine Information Centre  
Phone: (604) 666-6011  
Fax: (604) 666-8453  
E-mail: RMIC-Pacific@pac.dfo-mpo.gc.ca  
Notice to Shipping information  
[http://www.pacific.ccg-gcc.gc.ca/mcts-sctm/notship/index\\_e.htm](http://www.pacific.ccg-gcc.gc.ca/mcts-sctm/notship/index_e.htm)

## **DGPS FULLY OPERATIONAL SERVICE**

The Canadian Coast Guard (CCG) announces that the Differential Global Positioning Service (DGPS) Fully Operational Service (FOS) is available for positioning and navigation.

FOS means the service will provide a DGPS broadcast using the type 9 RTCM message for pseudorange corrections at a data transmission rate of 200 baud. Refer to Radio Aids to Marine Navigation (RAMN) for estimated advertised coverage for each differential station.

Users are also advised that differential corrections are based on the NAD 83 datum position of the reference station antenna and positions obtained using DGPS should be referenced to this coordinate system only. DGPS receivers must be set to the WGS 84 datum in order to obtain optimum positioning accuracy.

<b>Table of DGPS Reference Stations in Canada</b>						
<b>Station Name</b>	<b>Id. Nos of reference stations</b>	<b>DGPS Station ID</b>	<b>Geog. Position</b>		<b>Frequency [khz]</b>	<b>Bit/s</b>
			<b>Latitude</b>	<b>Longitude</b>		
Cape Race, NL	338,339	940	46 46 N	53 11 W	315	200
Cape Ray, NL	340,341	942	47 38 N	59 14 W	288	200
Cape Norman, NL	342,343	944	51 30 N	55 49 W	310	200
Rigolet, NL	344,345	946	54 11 N	58 27 W	299	200
Partridge Island, NB	326,327	939	45 14 N	66 03 W	295	200
Pt. Escuminac, NB	332,333	936	47 04 N	64 48 W	319	200
Fox Island, NS	336,337	934	45 20 N	61 05 W	307	200
Western Head, NS	334,335	935	43 59 N	64 40 W	312	200
Hartlen Point, NS	330,331	937	44 36 N	63 27 W	298	200
St.-Jean-sur-Richelieu, QC	312,313	929	45 19 N	73 19 W	296	200
Lauzon, QC	316,317	927	46 49 N	71 10 W	309	200
Rivière-du-Loup, QC	318,319	926	47 46 N	69 36 W	300	200
Moisie, QC	320,321	925	50 12 N	66 07 W	313	200
Warton, ON	310,311	918	44 45 N	81 07 W	286	200
Cardinal, ON	308,309	919	44 47 N	75 25 W	306	200
Alert Bay, BC	300,301	909	50 35 N	126 55 W	309	200
Amphitrite Pt., BC	302,303	908	48 55 N	125 33 W	315	200
Richmond, BC	304,305	907	49 11 N	123 07 W	320	200
Sandspit, BC	306,307	906	53 14 N	131 49 W	300	200

### **DGPS RECEIVER – WARNING**

The Canadian Coast Guard's Differential Global Positioning System (DGPS) broadcast contains built in health information designed to alert a DGPS user receiver of an out of tolerance or fault condition. During testing, it was found that some user DGPS receivers did not process the health information properly. Improper processing by a user equipment can result in incorrect positions.

Please contact your DGPS manufacturer or supplier to ensure that your receiver is capable of processing the DGPS Reference Station Health information correctly.

### **DGPS USER ALERT**

The Canadian Coast Guard received reports in March 97 of DGPS receivers apparently ignoring the broadcast alarm which should signal the immediate discontinuation of a particular satellite correction. Reports indicate that some user equipment does not properly recognize this "do-not-use" correction flag and as a result erroneously processes it as a correction. This can result in position errors as large as 15 kilometers while the receiver is in DGPS mode. DGPS users are advised that they should contact the manufacturer of their equipment immediately to determine if they require a receiver upgrade.

## DGPS station anomaly report / Rapport d'anomalie des stations DGPS

With the purpose of constantly evaluating the quality of the DGPS service offered, the Canadian Coast Guard is providing the mariner with the following anomaly report. This report will allow us to get well-supported information concerning the anomaly and thus, will facilitate the identification of the origin of the problem. Please fill accordingly each section of this report and forward it by the suggested ways. You will find a legend at the end of this document.

Avec le souci d'évaluer constamment la qualité du service DGPS offert, la Garde côtière met à la disposition du navigateur le présent rapport d'anomalie. Ce rapport servira à bien documenter l'anomalie et, de ce fait, facilitera l'identification ou la recherche de la source du problème. Nous vous prions de bien remplir chaque section de ce rapport et de l'acheminer de la façon suggérée. Vous trouverez une légende à la fin de ce document.

### User informations / Renseignements sur l'utilisateur

Vessel name / Nom du navire: \_\_\_\_\_ Destination: \_\_\_\_\_

Vessel position at the beginning of the anomaly /  
Position du navire au début de l'anomalie : \_\_\_\_\_

Vessel position at the end of the anomaly /  
Position du navire à la fin de l'anomalie : \_\_\_\_\_

### Anomaly report / Rapport d'anomalie

Date and time of the anomaly / Date et heure de l'anomalie: \_\_\_\_\_ Duration / Durée: \_\_\_\_\_

Number of satellites tracked on GPS receiver / Nombre de satellites reçus par le récepteur: \_\_\_\_\_

DGPS site using / Station DGPS utilisée: Freq.: \_\_ kHz SS: \_\_\_\_\_ dB SNR: \_\_\_\_\_ dB

DOP Geometry / Géométrie DOP : \_\_\_\_\_

User receiver operates correctly with other DGPS sites? /

Votre équipement DGPS fonctionne-t-il normalement à l'utilisation d'autres stations DGPS?: Yes/ Oui \_\_ No / Non \_\_

Comments / Commentaires: \_\_\_\_\_  
\_\_\_\_\_  
\_\_\_\_\_

Point of contact / Personne-ressource: Name/ Nom: \_\_\_\_\_  
Phone / Téléphone : \_\_\_\_\_

### Weather conditions / Conditions météo

Winds / Vents : Direction: \_\_\_\_\_ Speed / Vitesse: \_\_\_\_\_ KTS

Temp. °C: \_\_\_\_\_ VIS: \_\_\_\_\_ N.M.

Sea State / État de la mer : \_\_\_\_\_

Bearing and range to electrical storm /

Direction et distance de l'orage : \_\_\_\_\_

Time of the storm / Heure de l'orage: \_\_\_\_\_ UTC

### Essential information on user equipment to fill / Renseignements indispensables sur l'équipement à remplir:

#### User equipment information / Renseignements sur l'équipement

GPS receiver / Récepteur GPS: Make / Fabricant: \_\_\_\_\_ Model: \_\_\_\_\_

DGPS beacon receiver / Démodulateur DGPS: Make / Fabricant: Model: \_\_\_\_\_

Gyro interface with GPS / Gyro intégré avec le GPS? Yes / Oui: \_\_ No / Non : \_\_\_\_\_

DGPS interfaced with an ECDIS / DGPS intégré dans un SVCEI? Yes / Oui: \_\_\_\_\_ No / Non : \_\_\_\_\_

If yes, please fill below / Si oui, S.V.P. compléter ci-dessous:

ECDIS / SVCEI: Make / Fabricant: \_\_\_\_\_ Model: \_\_\_\_\_

Radar image interfaced / Image radar intégrée?: Yes / Oui: \_\_\_\_\_ No / Non: \_\_\_\_\_

Gyro interfaced with ECDIS / Gyro intégré avec SVCEI? Yes / Oui: No / Non: \_\_\_\_\_

Permanent installation or in evaluation / Installation permanente ou en évaluation : \_\_\_\_\_

**This report can be sent the following ways / Ce rapport peut être acheminé selon les façons suivantes:**

- 1) Fax / Par télécopieur : (613) 998-8428  
Attention: Aids to Navigation / Aides à la navigation
- 2) Mail / Par la poste: Director, Navigation Systems Branch  
Department of Fisheries and Oceans  
200 Kent Street, Station 5130  
Ottawa, ON  
K1A 0E6
- Directeur, Direction des systèmes à la navigation maritimes  
Ministère des Pêches et Océans  
200, rue Kent, Station 5130  
Ottawa, ON  
K1A 0E6

**Canada**

**Legend/Légende**

- Position** : Position can be provided by latitude, longitude, bearing and distance, location of a buoy, etc.  
La position peut être donnée en latitude, longitude, relèvement et distance, emplacement de bouée, etc.
- KTS** : Wind speed in knots / Vitesse du vent en noeuds.
- N.M.** : Visibility in Nautical Miles / Visibilité en milles nautiques.
- Freq. kHz** : Frequency in kilohertz / Fréquence en kilohertz .
- SS** : Signal strength in decibel / Force de signal en décibel.
- SNR** : Signal to noise ratio in decibel / Rapport signal-bruit en décibel .
- DOP (dilution of precision)** : Measure of the geometrical « strength » of the GPS satellite configuration. The DOP is measured on a scale of 1 to 10 / Mesure de la « force » géométrique de la configuration satellite. Le DOP est mesuré sur une échelle de 1 à 10
- SVCEI / ECDIS** : Electronic Chart Display and Information System / Système de Visualisation de Cartes Electroniques et d'Information .

# MONTHLY EDITION OF NOTICES TO MARINERS

## MAILING LIST CHANGES

Leader, Notices to Mariners  
Navigation Aids  
Navigation Systems Branch  
Canadian Coast Guard  
Department of Fisheries and Oceans  
Ottawa, ON  
K1A 0E6

Telephone (613) 990-3037  
Facsimile (613) 998-8428

Please indicate which edition you would like to receive.

**EASTERN EDITION** (will be comprised of Arctic, Newfoundland, Maritimes, Gulf & River St. Lawrence and Central areas) \_\_\_\_\_

**WESTERN EDITION** (will be comprised of Arctic and Pacific areas) \_\_\_\_\_

**ADD** \_\_\_\_\_ **AMEND** \_\_\_\_\_ **REMOVE** \_\_\_\_\_ **NO. OF COPIES** \_\_\_\_\_

OLD ADDRESS	
NAME	
STREET	APT
CITY	POSTAL CODE
PROVINCE	COUNTRY
NEW ADDRESS	
NAME	
STREET	APT
CITY	POSTAL CODE
PROVINCE	COUNTRY

*ID number above address on label*

*or*

*Attach complete address label to this sheet*

# INDEX

CANADA - 96 HOURS NOTIFICATION PRIOR TO ENTERING CANADIAN WATERS - CAUTION.....	1
NOTICE TO USERS .....	1
*901(T) CANADA - SAFETY OF OFFSHORE EXPLORATION AND EXPLOITATION VESSELS.....	1
CANADIAN COAST GUARD PUBLICATION - AMENDMENT TO THE RADIO AIDS TO NAVIGATION (ATLANTIC, ST.LAWRENCE, GREAT LAKES, LAKE WINNIPEG AND EASTERN ARCTIC) PUBLICATION - 2003.....	10
*902 CANADIAN HYDROGRAPHIC SERVICE – LIST OF CHARTS NOT HAND-CORRECTED. ....	2
*903 CANADIAN HYDROGRAPHIC SERVICE- LIST OF HAND-CORRECTED CHARTS.....	3
*904 CANADIAN HYDROGRAPHIC SERVICE - CHARTS .....	3
*905 CANADIAN HYDROGRAPHIC SERVICE – ELECTRONIC NAVIGATIONAL CHART (S57).....	4
*906 TRANSPORT CANADA - PUBLIC PORT TARIFF INCREASES.....	4



## NUMERICAL INDEX OF CANADIAN CHARTS AFFECTED

Chart No.	Page	Chart No.	Page	Chart No.	Page
1223	5	6241	9		
1311	5	7121	3, 4		
1316	5				
1514	5, 6				
2202	6				
2203	6, 7				
4001	7				
L/C4006	3, 4				
4363	3, 4				
4379	3, 4				
4497	3, 4				
4541	3, 4				
4595	3, 4				
4615	7				
4638	3, 4				
4659	3, 4				
4661	3, 4				
4665	3, 4				
4668	3, 4				
4670	3, 4				
4839	3, 4				
4921	7, 8				
4954	8				
5042	3, 4				
6023	9				
6212	9				
6218	3, 4				

**SECTION 1 – Edition 09/2003  
SAFETY AND GENERAL INFORMATION**

**CANADA - 96 HOURS NOTIFICATION PRIOR TO ENTERING CANADIAN WATERS - CAUTION.**

Effective October 11<sup>th</sup>, 2001, 0000 UTC, all vessels that are:

- a) of 500 gross tonnage or more;
- b) engaged in towing or pushing a vessel, where the combined tonnage of the ship and the vessel being towed or pushed is 500 tons gross tonnage or more; or
- c) carrying a pollutant or dangerous goods, or engaged in towing or pushing a vessel carrying a pollutant or dangerous goods;

**must request clearance 96 hours prior to entering Canadian waters from seaward**, or as soon as practical where the estimated time of arrival of the ship in Canadian waters is less than 96 hours after the time the ship departed its last port of call. This will remain in effect until further notice.

**NOTICE TO USERS**

**Announcement Regarding Canadian Hydrographic Service Charts Purchased Between August 2002 and March 2003.**

We recently discovered that some Canadian Hydrographic Service charts purchased between August 2002 and March 2003 exhibit poor durability.

Such durability issues may include ink that erases too easily or flakes off, charts that don't withstand folding nor hold up as well as they should after contact with moisture. These charts can be easily identified by the existence of a white chalky coating sitting loosely on the surface of the paper. This coating can be rubbed off the paper and onto hands with normal handling. This is due to a manufacturing defect where coating was improperly applied to the paper.

Testing charts for this condition is best done by scratching a white area of the chart with a fingernail. Affected charts will leave a chalky white substance on the fingernail.

If you own any charts from this time frame that exhibit this behaviour, contact your dealer to arrange for free replacements.

We apologize for any inconvenience caused by this situation and have taken steps to prevent this from happening in the future.

**\*901(T) CANADA - SAFETY OF OFFSHORE EXPLORATION AND EXPLOITATION VESSELS.**

Reference: Notice published in Section 1 of Edition 10/2002 is cancelled.

2003 Annual Edition of Notices to Mariners, No. 20, pages A20-1 to A20-4.

Mariners are advised that offshore exploration and exploitation vessels may be conducting drilling operations in the following areas:

**Gulf of St. Lawrence**  
NIL

**Mainland NWT**  
NIL

**Mackenzie Delta NWT/Beaufort Sea**  
NIL

**Arctic Islands of the NWT/Arctic Islands of Nunavut**  
NIL

**Eastern Arctic Offshore**  
NIL

**SECTION 1 – Edition 09/2003  
SAFETY AND GENERAL INFORMATION**

**Davis Strait**  
NIL

For information on Nova Scotia or Newfoundland Offshore activities, please contact C-NSOPB (902)422-5588; C-NOPB (709)778-1400.

NOTE: Mariners are advised to obtain up-to-date position reports on drilling vessels and production installations before entering an area of exploration and exploitation. This information is available by contacting, as appropriate, ECAREG CANADA, NORDREG CANADA or CVTS OFFSHORE via any Marine Communications and Traffic Services Centre (MCTS).

(AMA8035-10-17)

(NEB)

**\*902 CANADIAN HYDROGRAPHIC SERVICE – LIST OF CHARTS NOT HAND-CORRECTED.**

Supersedes previous “List of charts not hand-corrected”, last published in Edition #06/03.

The following is a list of charts that are not hand-corrected after their date of publication.

A list of corrections is available for each of these charts upon request, in writing, to Nautical Information, Canadian Hydrographic Service, Department of Fisheries and Oceans, Ottawa, Ontario, K1A 0E6. Please state the latest edition date of the chart.

1350	2086	3062	6035	6247	6271	6357
1351	2140	3080	6036	6248	6272	6358
1361	2261	3311	6037	6249	6273	6359
1509	2266	3312	6038	6258	6274	6360
1551	2267	3313	6050	6259	6285	6368
1554	2400	3488	6101	6260	6286	6369
2011	3052	3489	6205	6263	6287	6370
2023	3053	3601	6209	6264	6311	6371
2025	3055	6023	6240	6267	6341	6390
2026	3056	6026	6241	6268	6354	6505
2048	3057	6028	6242	6269	6355	6506
2055	3058	6030	6243	6270	6356	

The following is a list of charts that are not hand-corrected after their date of publication. Subsequent corrections for these charts are available from the Internet web site NOTMAR <http://www.notmar.gc.ca> or from the internet web site [www.charts.gc.ca](http://www.charts.gc.ca) or from previous editions of the Notices to Mariners.

1400	1550	2024	2204	4141	6207	6216
1510	1552	2028	2205	4142	6211	6217
1512	1553	2029	2206	4145	6212	6218
1513	1555	2044	2260	6021	6213	
1514	2021	2202	3050	6022	6214	
1515	2022	2203	3061	6100	6215	

Please be advised that certain copies of charts, which are not normally corrected for Notices to Mariners by the Canadian Hydrographic Service, have had Notices to Mariners incorporated on the chart prior to distribution. When these charts contain the following two notes:

1. “The information contained on this chart has been corrected from Notices to Mariners to the date of publication only. For subsequent corrections, consult the Notices to Mariners or write to Nautical Information, Canadian Hydrographic Service, Department of Fisheries and Oceans, Ottawa, Ontario K1A 0E6. Please state the latest edition date.

**Le contenu de cette carte a été corrigé au moyen des Avis aux navigateurs au moment de sa publication seulement. Pour les corrections subséquentes, consulter les Avis aux navigateurs au écrire à Information nautique, Service hydrographique du Canada, ministère des Pêches et des Océans, Ottawa (Ontario) K1A 0E6. Veuillez indiquer la date de la dernière édition.”**

**SECTION 1 – Edition 09/2003  
SAFETY AND GENERAL INFORMATION**

2. “NOTICES TO MARINERS / AVIS AUX NAVIGATEURS (*Followed by Notice to Mariners Number*)”

**The note that says: “NOTICES TO MARINERS / AVIS AUX NAVIGATEURS (*Followed by Notice to Mariners Number*)” supersedes the first note.**

Please be advised that the publications entitled *Guide to Federal Small Craft Harbours* of Ontario and of Quebec are no longer being updated by the Department of Fisheries and Oceans. As a result, the notes regarding these publications will be removed from the appropriate charts upon the next printing.

**\*903 CANADIAN HYDROGRAPHIC SERVICE- LIST OF HAND-CORRECTED CHARTS.**

Supersedes List of hand-corrected charts published in Edition #06/03.

The following is a list of charts, which are hand-corrected after their date of publication from information published in Notices to Mariners. CHS will provide a list of corrections for these charts on request. You can now obtain these corrections from the Internet web site NOTMAR, <http://notmar.gc.ca>

1310	2050	2200	2274	2308	6310	6428
1311	2053	L/C 2201	2282	2309	6408	6429
1409	2054	2218	2283	2310	6409	6430
1410	2058	2221	2284	2311	6410	6431
1431	2059	2222	2286	2312	6411	6432
1432	2060	2223	2289	2313	6412	6433
1433	2061	2225	2291	2314	6413	6434
1434	2064	2226	2292	2315	6414	6435
1435	2067	L/C 2228	2293	2318	6415	6436
1436	2069	2235	2294	6105	6416	6437
1437	2070	2241	2297	6106	6417	6438
1438	2077	L/C 2243	2298	6107	6418	6441
1439	2085	2244	2299	6108	6419	6451
L/C 2000	L/C 2100	2245	L/C 2300	6109	6420	6452
2006	L/C 2110	2250	L/C 2301	6110	6421	6453
2007	L/C 2120	2251	L/C 2302	6111	6422	6454
2017	L/C 2121	2257	2303	6112	6423	6455
2018	L/C 2122	2258	2304	6201	6424	
2042	L/C 2123	2259	2305	6206	6425	
2043	2165	2268	2306	6251	6426	
2049	2181	2273	2307	6281	6427	

**\*904 CANADIAN HYDROGRAPHIC SERVICE - CHARTS**

CHARTS	MAIN TITLE	SCALE	PUBLISHED	CAT#	PRICE
<b>New Editions</b>	All temporary and preliminary notices affecting the previous versions of the following charts are now cancelled. For any outstanding notices please consult section 2 of this edition.				
L/C4006	Newfoundland and Labrador/Terre-Neuve-et-Labrador to Bermuda / aux Bermuda	1:350 0000	08-AUG-2003	1	\$20.00
4363	Cape Smoky to/à St. Paul Island	1:74 474	12-SEP-2003	1	\$20.00
4379	Liverpool Harbour	1:8 400	18-JUL-2003	1	\$20.00
4497	Amet Sound	1:28 850	27-JUN-2003	1	\$20.00
4541	Sops Arm	1:13 000	04-JUL-2003	1	\$15.00
4595	Bay of Exploits Sheet/Feuille I (North-Nord)	1:24 500	04-JUL-2003	1	\$20.00
4638	Wreck Island to/à Cinq Cerf Bay	1:24 318	11-JUL-2003	1	\$20.00
4659	Port au Port	1:41 700	01-AUG-2003	1	\$20.00
4661	Bear Head to/à Cow Head	1:147 300	04-JUL-2003	1	\$20.00
4665	St. Margaret Bay and Approaches/et les approches	1:18 295	04-JUL-2003	1	\$20.00
4668	Anchorage / Mouillages in the / dans le Strait of Belle Isle / Détroit de Belle Isle	----	04-JUL-2003	1	\$15.00
4670	Forteau Bay	1:24 440	13-JUN-2003	1	\$15.00

**SECTION 1 – Edition 09/2003  
SAFETY AND GENERAL INFORMATION**

CHARTS	MAIN TITLE	SCALE	PUBLISHED	CAT#	PRICE
4839	Head of/Fond de Placentia Bay	1:40 000	01-AUG-2003	1	\$20.00
5042	Cut Throat Island to/à Quaker Hat	1:60 000	27-JUN-2003	1	\$20.00
6218	Kenora, Rat Portage Bay	1:15 000	11-JUL-2003	3	\$20.00
7121	Cape Mills to/à Cape Rammelsberg	1:75 000	16-MAY-2003	4	\$20.00

**\*905 CANADIAN HYDROGRAPHIC SERVICE – ELECTRONIC NAVIGATIONAL CHART (S57).**

**Notes: (1) The following ENC products are only available from:**

**Nautical Data International Inc.  
P.O. Box 127, Station C  
St. John's, Newfoundland  
A1C 5H5  
Telephone: 1-800-563-0634 or 1-709-576-0634  
Facsimile: 709-576-0636**

**(2) For licence information and rates please contact the distributor,  
Nautical Data International Inc. (NDI) at the above-mentioned address.**

RELEASED PRODUCTS	
S-57 ENC NUMBER	CHART TITLE
CA576007	Marine Atlantic Terminal/Terminal de Marine Atlantique
CA276286	Northumberland Strait
CA576527	Canso Harbour and Inner Approaches
CA479045	Lac Saint-Louis

**\*906 TRANSPORT CANADA - PUBLIC PORT TARIFF INCREASES.**

Following extensive review of Transport Canada's public port system, Transport Canada is increasing its public port fees by 10% effective January 1, 2004. As such, all public port fees, except those for utilities and other services which will remain unchanged, will be increased.

These charges are applicable only to the regional/local ports and the remote ports remaining under the purview of Transport Canada. They do not apply to Canada Port Authorities, divested sites, nor facilities owned and operated by other government departments or private entities.

Transport Canada provides tariff schedules on its website for all public port charges except lettings. Typical charges include:

- Harbour Dues - A charge assessed against a vessel that comes into or uses a public port. This charge is based on the vessel's size and registry.
- Wharfage - A charge for moving cargo over a public wharf. This fee is based on cargo type with a rate per unit basis (i.e. per tonne or cubic metre).
- Berthage - A charge for occupying a berth or part thereof at a public port. The charge is based on the vessel's size and its length of stay.
- Storage - A charge for use of sheds or open space for assembling or distributing cargoes. The charge depends on space occupied and duration of use.
- Utilities and Other Services - A charge for the use of utilities and other services provided at public ports. The charge is based upon actual cost plus a percentage mark-up to cover administrative fees.

The tariff notices can be found on Transport Canada's website at <http://www.tc.gc.ca/programs/ports/menupublicportfees.htm>. For further information, please contact:

Transport Canada  
Senior Advisor, Port Authorities  
330 Sparks Street  
Place de Ville, Tower "C"  
Ottawa, Ontario  
K1A 0N5  
Facsimile: 613-954-0838

**SECTION 2 – Edition 09/2003  
CHART CORRECTIONS**

**1223 - Chenal Du Bic et les approches/and approaches - New Edition - 03-OCT-1997 - NAD 1983**

12-SEP-2003 LNM/D. 29-AUG-2003  
 Amend legend (49° 23') in the title block to read (48° 23') 48°20'27.0"N 068°43'43.0"W  
 DFO(6500151-01)

**1311 - Sorel à/to Varennes - New Chart - 05-NOV-1999 - NAD 1983**

12-SEP-2003 LNM/D. 09-MAY-2003  
 Delete spoil ground limit joining 45°56'06.7"N 073°13'49.4"W  
 45°56'03.6"N 073°13'41.2"W  
 and 45°56'24.3"N 073°13'25.2"W  
 DFO(6405558-01)

Delete depth of 3 metres 2 decimetres 45°56'08.6"N 073°13'36.8"W  
 DFO(6405558-03)

Add orange and white mooring barrel buoy, Priv 45°46'43.9"N 073°21'34.9"W  
 (L2003221) DFO(6405533-01)

Add spoil ground limit joining 45°56'06.8"N 073°13'49.7"W  
 45°56'04.3"N 073°13'51.6"W  
 45°56'00.4"N 073°13'41.4"W  
 45°56'23.2"N 073°13'23.6"W  
 and 45°56'23.8"N 073°13'25.5"W  
 DFO(6405558-02)

**1316 - Port de Québec - New Edition - 26-FEB-1999 - NAD 1983**

12-SEP-2003 LNM/D. 03-AUG-2001  
 Delete wharf between 46°47'43.6"N 071°13'12.2"W  
 and 46°47'47.1"N 071°13'05.1"W  
 DFO(6405477-02)

Delete legend 10,3 m 46°47'44.7"N 071°13'08.0"W  
 DFO(6405477-03)

Add private light F Bu (Priv) 46°47'46.4"N 071°13'04.5"W  
 (L2003157) DFO(6405447-01)

Add private light F Bu (Priv) 46°47'43.0"N 071°13'11.5"W  
 (L2003158) DFO(6405448-01)

Add wharf joining 46°47'43.6"N 071°13'12.2"W  
 46°47'42.9"N 071°13'11.5"W  
 46°47'46.4"N 071°13'04.4"W  
 and 46°47'47.1"N 071°13'05.1"W  
 The depth of 10,3 metres against berth 103 remains as is.  
 DFO(6405477-01)

Add legend 10,3 m 46°47'44.2"N 071°13'07.6"W  
 DFO(6405477-04)

**1514 - Carillon à/to L'Original - Sheet 1 - New Chart - 24-JUL-1998 - NAD 1983**

19-SEP-2003 LNM/D. 07-FEB-2003  
 Reposition red starboard hand pillar buoy, marqued H-266 from 45°37'52.2"N 074°41'12.7"W  
 to 45°37'52.9"N 074°41'28.6"W  
 (L2003224) DFO(6405536-01)

**SECTION 2 – Edition 09/2003  
CHART CORRECTIONS**

**1514 - L'Original à/to Papineauville - Sheet 2 - New Chart - 24-JUL-1998 - NAD 1983**

19-SEP-2003 LNM/D. 07-FEB-2003  
 Reposition red starboard hand pillar buoy, marked H-266 from 45°37'52.2"N 074°41'12.7"W  
 to 45°37'53.0"N 074°41'28.7"W  
 (L2003224) DFO(6405536-01)

**2202 - Tomahawk Island to/à Twelve Mile Bay - Sheet 2 - New Edition - 26-MAR-1999 - NAD 1927**

12-SEP-2003 LNM/D. 20-JUN-2003  
 Add red, starboard hand spar buoy, marked C152 45°05'38.4"N 080°05'52.2"W  
 (D2003078) DFO(6600982-01)

**2202 - Twelve Mile Bay to/à Rose Island - Sheet 3 - New Edition - 26-MAR-1999 - NAD 1927**

12-SEP-2003 LNM/D. 20-JUN-2003  
 Amend CP2 to read CP2/2 45°13'28.0"N 080°11'12.0"W  
 (D2003079) DFO(6600983-01)

Add red, starboard hand spar buoy, marked C152 45°05'38.4"N 080°05'52.2"W  
 (D2003078) DFO(6600982-01)

Add red, starboard hand spar buoy, marked CP2 45°13'25.8"N 080°10'57.0"W  
 (D2003080) DFO(6600984-01)

Add red, starboard hand spar buoy, marked CP6/2 45°13'29.5"N 080°11'37.3"W  
 (D2003081) DFO(6600985-01)

**2203 - Raspberry Island to/à Isle of Pines - Sheet 2 - New Edition - 30-JUN-2000 - NAD 1927**

19-SEP-2003 LNM/D. 13-JUN-2003  
 (T)Add yellow, black and yellow, west cardinal spar buoy, marked AQ 45°34'09.7"N 080°31'23.5"W  
 (D2003102T) DFO(6600992-01)

(T)Add green, port hand spar buoy, marked AQ1 45°34'05.2"N 080°31'21.8"W  
 (D2003103T) DFO(6600993-01)

(T)Add green, port hand spar buoy, marked AQ3 45°34'19.1"N 080°31'31.7"W  
 (D2003104T) DFO(6600994-01)

(T)Add red, starboard hand spar buoy, marked AQ4 45°34'23.7"N 080°31'34.3"W  
 (D2003105T) DFO(6600995-01)

(T)Add green, port hand spar buoy, marked AQ5 45°34'37.6"N 080°31'43.9"W  
 (D2003106T) DFO(6600996-01)

(T)Add red, starboard hand spar buoy, marked AQ6 45°34'33.5"N 080°31'42.8"W  
 (D2003107T) DFO(6600997-01)

**2203 - Isle of Pines to/à Byng Inlet - Sheet 3 - New Edition - 30-JUN-2000 - NAD 1927**

19-SEP-2003 LNM/D. 13-JUN-2003  
 Delete recommended track joining 45°43'42.0"N 080°40'13.7"W  
 45°43'33.1"N 080°40'35.8"W  
 and 45°43'21.6"N 080°40'20.5"W  
 DFO(6600987-02)

Add red, starboard hand spar buoy, marked A126/2 45°43'36.0"N 080°40'15.0"W  
 (D2003095) DFO(6600987-01)

Add recommended track between 45°43'42.0"N 080°40'13.7"W  
 and 45°43'21.6"N 080°40'20.5"W  
 DFO(6600987-03)

**SECTION 2 – Edition 09/2003  
CHART CORRECTIONS**

Add	red, starboard hand spar buoy, marked A126/4	45°43'40.2"N 080°40'13.2"W (D2003096) DFO(6600988-01)
Add	green, port hand spar buoy, marked A127/1	45°43'36.6"N 080°40'16.8"W (D2003097) DFO(6600989-01)
Add	green, port hand spar buoy, marked A127/3	45°43'41.4"N 080°40'15.0"W (D2003098) DFO(6600990-01)

**4001 - Gulf of Maine to Strait of Belle Isle au Déroit de Belle Isle - New Edition - 01-DEC-1995 - NAD 1983**

12-SEP-2003		LNM/D. 08-AUG-2003
CANCELS	Scientific subsurface mooring Notice 163(T) 1994 is cancelled - scientific subsurface mooring removed.	53°44'18.0"N 055°28'30.0"W  DFO(6011164-01)

**4615 - Harbours in Placentia Bay Petite Forte to Broad Cove Head - New Edition - 20-AUG-1999 - NAD 1983**

05-SEP-2003		LNM/D. 04-OCT-2002
Add	light FIR	47°21'49.3"N 054°53'53.5"W (N2000338) LL(55.42) DFO(6829220-01)
Add	pier	between 47°21'50.2"N 054°53'55.0"W and 47°21'49.2"N 054°53'53.6"W DFO(6829220-02)

**4921 - Grande-Rivière - New Edition - 06-MAR-1998 - NAD 1983**

12-SEP-2003		LNM/D. 13-JUN-2003
Add	obstruction, depth unknown, position doubtful With this notification, Notice 434(T)/96 is cancelled.	48°23'43.8"N 064°30'02.4"W  DFO(6405566-01)

**4921 - Quai/ Wharf Chandler - New Edition - 06-MAR-1998 - NAD 1983**

12-SEP-2003		LNM/D. 13-JUN-2003
Delete	9 metres 5 decimetres	48°20'32.9"N 064°39'34.6"W DFO(6406507-05)
Delete	9 metres 5 decimetres	48°20'25.3"N 064°39'37.9"W DFO(6406507-09)
Delete	10 metres 7 decimetres	48°20'23.6"N 064°39'34.1"W DFO(6406507-12)
Replace	6 metres 6 decimetres by 6 metres 3 decimetres	48°20'36.8"N 064°39'30.9"W DFO(6406507-01)
Replace	7 metres 6 decimetres by 7 metres 1 decimetre	48°20'35.7"N 064°39'27.7"W DFO(6406507-02)
Replace	8 metres 7 decimetres by 8 metres 4 decimetres	48°20'33.2"N 064°39'28.1"W DFO(6406507-03)
Replace	8 metres by 7 metres 5 decimetres	48°20'34.7"N 064°39'32.4"W DFO(6406507-04)
Replace	8 metres 8 decimetres by 8 metres 2 decimetres	48°20'31.6"N 064°39'38.5"W DFO(6406507-06)
Replace	9 metres 3 decimetres by 8 metres 8 decimetres	48°20'28.3"N 064°39'39.6"W DFO(6406507-07)



**SECTION 2 – Edition 09/2003  
CHART CORRECTIONS**

Replace	11 metres 5 decimetres by 11 metres 1 decimetre	48°20'22.1"N 064°39'29.9"W <i>DFO(6406507-14)</i>
Replace	11 metres by 10 metres 5 decimetres	48°20'24.9"N 064°39'29.1"W <i>DFO(6406507-15)</i>
Replace	10 metres 2 decimetres by 9 metres 9 decimetres	48°20'29.2"N 064°39'26.6"W <i>DFO(6406507-17)</i>
Replace	10 metres 6 decimetres by 10 metres 2 decimetres	48°20'30.5"N 064°39'22.3"W <i>DFO(6406507-18)</i>
Replace	11 metres 3 decimetres by 11 metres	48°20'26.3"N 064°39'25.7"W <i>DFO(6406507-19)</i>
Replace	12 metres 1 decimetre by 11 metres 8 decimetres	48°20'27.8"N 064°39'21.7"W <i>DFO(6406507-20)</i>
Replace	12 metres 6 decimetres by 12 metres 3 decimetres	48°20'27.8"N 064°39'15.9"W <i>DFO(6406507-21)</i>
Replace	12 metres 2 decimetres by 11 metres 9 decimetres	48°20'22.8"N 064°39'24.8"W <i>DFO(6406507-22)</i>
Replace	12 metres 7 decimetres by 12 metres 3 decimetres	48°20'24.4"N 064°39'20.6"W <i>DFO(6406507-23)</i>
Replace	legend 9,8m (1991) with legend 9,0m (1999)	48°20'30.1"N 064°39'32.7"W <i>DFO(6406507-24)</i>
Add	8 metres 1 decimetre	48°20'28.8"N 064°39'29.4"W <i>DFO(6406507-08)</i>
Add	9 metres 1 decimetre	48°20'25.3"N 064°39'38.8"W <i>DFO(6406507-10)</i>
Add	8 metres 3 decimetres	48°20'24.6"N 064°39'37.1"W <i>DFO(6406507-11)</i>
Add	10 metres 4 decimetres	48°20'23.2"N 064°39'33.0"W <i>DFO(6406507-13)</i>
Add	10 metres	48°20'27.1"N 064°39'27.8"W <i>DFO(6406507-16)</i>

**4954 - Chenal du Havre de la Grande Entrée - New Edition - 21-FEB-2003 - NAD 1983**

12-SEP-2003		LNM/D. 01-AUG-2003
Add	green port hand can light buoy QG, marked YC-15	47°33'26.4"N 061°33'40.8"W <i>(L2003205) LL(1482.7) DFO(6405487-01)</i>

**6023 - Lake of Bays - New Edition - 26-FEB-1988 - NAD 1927**

05-SEP-2003		LNM/D. 29-AUG-2003
Amend	vertical clearance of 10ft, to read 13ft against bridge	45°14'41.9"N 078°53'39.3"W <i>DFO(6601013-01)</i>
Amend	vertical clearance of 15ft, to read 14ft against bridge	45°14'45.0"N 078°53'31.9"W <i>DFO(6601013-03)</i>

**SECTION 2 – Edition 09/2003  
CHART CORRECTIONS**

Add overhead power cable with vertical clearance of 13ft between 45°14'44.0"N 078°53'33.1"W  
and 45°14'45.8"N 078°53'33.7"W  
*DFO(6601013-02)*

**6023 - Dorset - New Edition - 26-FEB-1988 - NAD 1927**

05-SEP-2003 LNM/D. 29-AUG-2003  
Amend vertical clearance of 10ft, to read 13ft against bridge 45°14'41.9"N 078°53'39.8"W  
*DFO(6601013-01)*

Amend vertical clearance of 15ft, to read 14ft against bridge 45°14'45.2"N 078°53'32.0"W  
*DFO(6601013-03)*

Add overhead power cable with vertical clearance of 13ft between 45°14'43.8"N 078°53'33.1"W  
and 45°14'45.8"N 078°53'33.7"W  
*DFO(6601013-02)*

**6212 - Kenora to à Aulneau Peninsula - Sheet 2 - New Edition - 08-MAR-2002 - NAD 1983**

05-SEP-2003  
Delete red, starboard hand spar buoy, marked EJ4 49°38'47.2"N 094°28'32.9"W  
*(D2003087) DFO(6600972-01)*

Delete recommended track between 49°41'12.5"N 094°27'03.4"W  
and 49°40'41.8"N 094°26'53.8"W  
*DFO(6601016-01)*

Add red, starboard hand spar buoy, marked E16.2 49°41'00.0"N 094°26'56.0"W  
*(D2003089) DFO(6600974-01)*

Add recommended track joining 49°41'12.5"N 094°27'03.4"W  
49°41'01.0"N 094°26'53.3"W  
49°40'49.5"N 094°26'51.9"W  
and 49°40'41.8"N 094°26'53.8"W  
*DFO(6601016-02)*

**6241 - Berens River to Nelson River - New Edition - 06-AUG-1957 - Unknown**

05-SEP-2003 LNM/D. 23-JUN-2000  
Delete note 53°12'30.0"N 097°25'00.0"W

Channel into Mukutawa River marked by lights, buoys and beacons  
With this notification, (P) Notice D2002-020 is cancelled. See  
reference DFO(6600952-2) appearing in this edition.

*(D2003-062) DFO(6600952-02)*

**SECTION 3 – Edition 09/2003  
CORRECTIONS TO RADIO AIDS TO MARINE NAVIGATION**

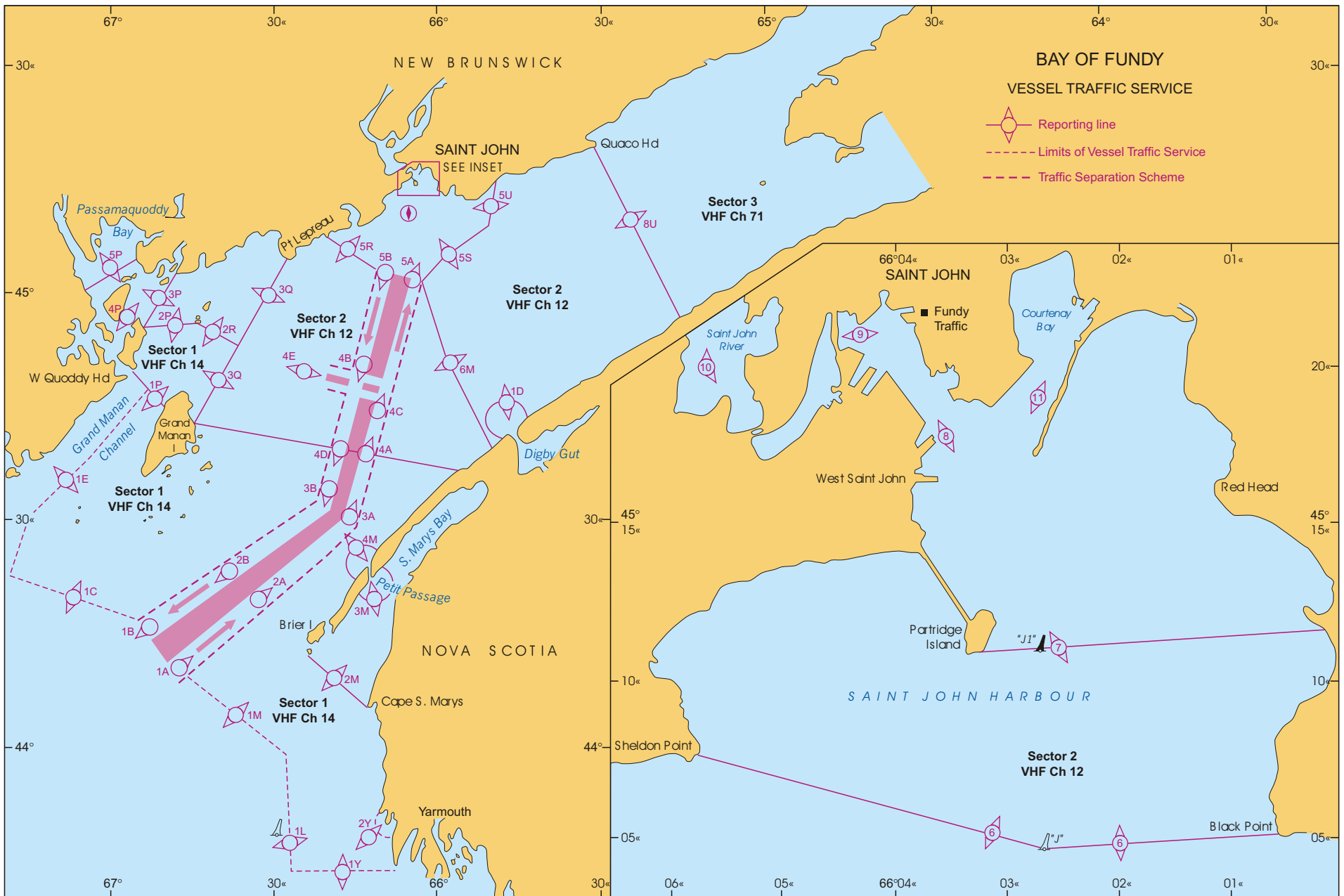
**CANADIAN COAST GUARD PUBLICATION - AMENDMENT TO THE RADIO AIDS TO NAVIGATION  
(ATLANTIC, ST.LAWRENCE, GREAT LAKES, LAKE WINNIPEG AND EASTERN ARCTIC) PUBLICATION -  
2003.**

Reference: Ed. 08/2003

Delete chart.

Replace with attached chart.

3-16



**SECTION 4 – Edition 09/2003  
SAILING DIRECTIONS**

Gulf of St. Lawrence, First Edition, 1992 —

Page 53 — **MILLERAND** diagram

Add 1<sub>4</sub> @ 062°22', 593 metres from the SW corner of the border.

(Q2003-047.1)

Page NOTES — **GRANDE-ENTRÉE** diagram

Add a green port hand can light buoy QG, marked YC15, @ 069°17', 542 metres from the SW corner of the border.

(Q2003-051.1)

ATL 110 — St. Lawrence River — Cap Whittle/Cap Gaspé to Les Escoumins and Anticosti Island, Second Edition, 2002 —

Page 16 — Paragraph 178, line 2

Delete: (seasonal)

(Q2003-049.1)

Page 16 — Paragraph 179, line 2

Delete: (seasonal)

(Q2003-049.2)

Page 21 — Paragraph 228, line 2

Delete: (seasonal)

(Q2003-049.3)

Page 49 — Paragraph 107, line 13

Delete: private

(Q2003-049.4)

ATL 112 — St. Lawrence River — Cap-Rouge to Montréal and Rivière Richelieu, Second Edition, 2001 —

Page 4 — **NEUVILLE** diagram

Delete 2<sub>9</sub> @ 057°50', 661 metres from the SW corner of the border.

(Q2003-043.1)

Delete 3 @ 058°44', 588 metres from the SW corner of the border.

(Q2003-043.2)

Add 2<sub>4</sub> @ 057°43', 632 metres from the SW corner of the border.

(Q2003-043.3)


Add 2<sub>9</sub> @ 059°40', 552 metres from the SW corner of the border.

(Q2003-043.4)

Add 3<sub>1</sub> @ 060°16', 455 metres from the SW corner of the border.

(Q2003-043.5)

Page 7 — After paragraph 62

Insert:  62.1 Between Rapides Richelieu and Barre à Boulard, situated about 3 miles apart, the tidal stream may be strong and can generate eddies and tide rips. See Table 1.2.

(Q2003-050.1)

Page 43 — **Table 2.4 Port de Montréal — Wharves**

Make the following corrections under the «Depth» column.

<b>Berth</b>	<b>Depth</b> metres
<b>Vieux-Port de Montréal (Jacques-Cartier Wharf)</b>	
17	8.2
18 and 19	8.2

(Q2003-054.1)

Page 44 — **Table 2.4 Port de Montréal — Wharves (cont'd)**

Make the following corrections under the «Depth» column.

<b>Berth</b>	<b>Depth</b> metres
<b>Sections 24 to 37</b>	
25	9.1
27	9.1
28	9.1
29	9.1
30	*9.1

(Q2003-054.2)

**SECTION 4 – Edition 09/2003  
SAILING DIRECTIONS**

- CEN 301 — St. Lawrence River, Montréal to Kingston, First Edition, 1996 —  
Page 8 — Paragraph 95, line 1 – after “**lights**”  
Insert: (seasonal)  
(Q2003-053.1)
- CEN 305 — Lake Huron, St. Marys River, Lake Superior, First Edition, 2000 —  
Page 103 — Paragraph 311, line 2  
Delete: 29  
Replace by: 25  
(C2003-019.1)
- Page 105 — Paragraph 348, line 2  
Delete: 46  
Replace by: 44  
(C2003-019.2)
- CEN 308 — Rideau Canal and Ottawa River, First Edition, 2003 —  
Page 112 — Paragraph 31, line 3  
Delete: **Buoyed** channels lead north and south  
Replace by: The **buoyed** channel leads north  
(Q2003-052.1)
- Page 118 — Paragraph 90, lines 1 and 2  
Line 1 — Delete: extending  
Replace by: extends  
Line 2 — Delete: crosses the route  
(Q2003-052.2)
- Page 119 — Paragraph 117, last line  
Add: Another **wreck** has been reported (2002) 0.4 M SW  
of the same point.  
(Q2003-042.1)

**SECTION 5 – Edition 09/2003**  
**LIST OF LIGHTS, BUOYS AND FOG SIGNALS CORRECTIONS**

No.	Name	Position ----- Latitude N. Longitude W.	Light Characteristics	Focal Height in m. above water	Nomi- nal Range	Description ----- Height in meters above ground	Remarks ----- Fog Signals
<b>NEWFOUNDLAND</b>							
40.5	Garden Cove wharf	47 51 03 54 09 31	Fl R	4s	.....	Cylindrical mast. 2.1	Year round.  Chart:4839 Edn 09/03(N02-118)
44.4	La Plante Sunker West cardinal light buoy PLS	47 45 14.3 54 13 30.3	Q(9) W	15s	.....	Yellow, black and yellow, marked "PLS".	Year round.  Chart:4839 Edn 09/03 (N02-119)
55.42	Baine Harbour Floating Dock	47 21 49.3 54 53 53.5	Fl R	4s	2.1	2 Grey cylindrical mast. 3.1	Year round.  Chart:4615 Edn 09/03(N00-338)
62.93	Woody Island light buoy PW2.2	47 46 30 54 12 32.9	Fl R	4s	.....	Red spar, marked "PW2.2".	Year round.  Chart:4839 Edn 09/03 (N02-132)
111.94	Garnish Outer light buoy VFG1	47 14 22 55 21 47	Fl G	4s	.....	Green spar, marked "VFG1".	Year round.  Chart:4832 Edn 09/03(N02-116)
186	Broad Cove Point range						Delete from list.
187							Chart:4659 Edn 09/03(N02-123,124)
235.34	Alcock's Point light buoy KQ7	51 32 12.1 55 27 42.1	Fl G	4s	.....	Green spar, marked "KQ7".	Seasonal.  Chart:4020 Edn 09/03(N02-113)
238.1	Gull Rock light buoy KU1	51 31 55 55 26 46.5	Fl G	4s	.....	Green spar, marked "KU1".	Seasonal.  Chart:4020 Edn 09/03(N02-107)
238.2	Cow Rock light buoy KU2	51 31 59 55 26 43.8	Fl R	4s	.....	Red spar, marked "KU2".	Seasonal.  Chart:4020 Edn 09/03(N02-108)
238.3	Smith's Point light buoy KU3	51 31 23.2 55 27 16	Fl G	4s	.....	Green spar, marked "KU3".	Seasonal.  Chart:4020 Edn 09/03(N02-109)
238.4	Garden Cove Point light buoy KU4	51 31 47.6 55 26 55.4	Fl R	4s	.....	Red spar, marked "KU4".	Seasonal.  Chart:4020 Edn 09/03(N02-110)
238.5	Leo's Rock light buoy KU6	51 31 24.4 55 27 15.2	Fl R	4s	.....	Red spar, marked "KU6".	Seasonal.  Chart:4020 Edn 09/03(N02-111)
252	Roddickton Wharf	On outer end of wharf. 50 51 54 56 08 00	Fl G	4s	3.7	..... Grey cylindrical mast. 2.1	Seasonal.  Chart:4538 Edn 09/03(N03-026)

**SECTION 5 – Edition 09/2003**  
**LIST OF LIGHTS, BUOYS AND FOG SIGNALS CORRECTIONS**

No.	Name	Position ----- Latitude N. Longitude W.	Light Characteristics	Focal Height in m. above water	Nomi- nal Range	Description ----- Height in meters above ground	Remarks ----- Fog Signals
<b>NEWFOUNDLAND</b>							
324.71	Bridges Passage light buoy NP5	56 27 09.6 61 33 58.2	F G	4s	.....	Green spar, marked "NP5".	Seasonal.  Chart:5052 Edn 09/03(N02-104)
350.6	Phillips Head Wharf	49 13 30 55 18 23	Fl R	4s	.....	Grey cylindrical mast. 2.1	Seasonal.  Chart:4597 Edn 09/03
351 H666	Lower Sandy Point	49 12 45 55 17 20	Fl G	3s	5.5 4	Grey square skeleton tower, green and white daymarks on 3 sides. 5.2	Flash 0.5 s; eclipse 2.5 s. Year round.  Chart:4597 Edn 09/03(N03-021)
489.2	Avondale North light buoy CA2	47 25 31 53 11 28	F R	4s	.....	Red spar, marked "CA2".	Year round.  Chart:4847 Edn 09/03(N02-140)
489.3	Avondale South light buoy CA3	47 25 31 53 11 25	F G	4s	.....	Green spar, marked "CA3".	Year round.  Chart:4847 Edn 09/03(N02-141)
<b>ATLANTIC</b>							
656.6	Whitehaven Harbour light buoy PU15	S. of Kelp Shoal. 45 14 04.3 61 10 41.5	F G	4s	.....	Green spar, marked "PU15".	Year round.  Chart:4233 Edn 09/03(G03-063)
657.5	Gammon Islands light buoy PU5	Southern Passage. 45 12 08 61 08 35.8	Q G	1s	.....	Green spar, marked "PU5".	Year round.  Chart:4233 Edn 09/03(G03-064)
684.02	Guysborough Harbour light buoy CQ5	45 22 55 61 29 23	F G	4s	.....	Green, marked "CQ5".	Year round.  Chart:N/A Edn 09/03(G03-110)
686.6	Chedabucto Bay light and bell buoy C1	45 25 24.8 61 06 40.3	Q G	1s	.....	Green, marked "C1".	Year round.  Chart:4308 Edn 09/03
686.7	Chedabucto Bay light buoy C2	45 25 38.1 61 06 17.3	Q R	1s	.....	Red, marked "C2".	Year round.  Chart:4308 Edn 09/03
709	Cerberus Rock light and whistle buoy CH4	S. of rock. 45 27 37 61 06 15	F R	4s	.....	Red, marked "CH4".	Winter spar. Seasonal.  Chart:4308 Edn 09/03
710	Petit-de-Grat light and whistle buoy CJ	45 28 18.3 60 58 15.6	Mo(A) W	6s	.....	Red and white vertical stripes, marked "CJ".	Seasonal.  Chart:4308 Edn 09/03



**SECTION 5 – Edition 09/2003**  
**LIST OF LIGHTS, BUOYS AND FOG SIGNALS CORRECTIONS**

No.	Name	Position ----- Latitude N. Longitude W.	Light Characteristics	Focal Height in m. above water	Nomi- nal Range	Description ----- Height in meters above ground	Remarks ----- Fog Signals	
<b>ATLANTIC</b>								
711	Petit-de-Grat light and bell buoy CJ1	45 28 59.4 60 58 26.9	F G	4s	.....	Green, marked "CJ1".	Winter spar. Seasonal.	
							Chart:4308 Edn 09/03	
712	Arrow Point light buoy CJ2	SW. of Big Arrow Rock. 45 29 05.2 60 58 15.9	F R	4s	.....	Red, marked "CJ2".	Winter spar. Seasonal.	
							Chart:4308 Edn 09/03	
716	Mouse Island light buoy CJ5	45 29 46.4 60 57 49.8	Q G	1s	.....	Green, marked "CJ5".	Winter spar. Seasonal.	
							Chart:4308 Edn 09/03	
716.1	Mouse Island light buoy CJ6	45 29 46.3 60 57 46.6	Q R	1s	.....	Red, marked "CJ6".	Winter spar. Seasonal.	
							Chart:4308 Edn 09/03	
717	Petit-de-Grat Harbour light buoy CJ9	45 29 55.2 60 57 40.5	F G	4s	.....	Green, marked "CJ9".	Winter spar. Seasonal.	
							Chart:4308 Edn 09/03	
718 H3399	Petit-de-Grat Inner range	E. side of island. 45 30 03.6 60 57 31.5	F G	.....	12.0	.....	Triangular skeleton mast, enclosed lower portion, white daymark, red vertical stripe. 3.7	Visible in line of range. Year round.
719 H3399.1		033°56' 64.1m from front.	F G	.....	15.4	.....	Triangular skeleton mast, enclosed lower portion, white daymark, red vertical stripe. 3.4	Visible in line of range. Year round.
							Chart:4308 Edn 09/03	
719.1 H3401	Cowley Point breakwater	W. side of inlet, on end of breakwater. 45 30 06.3 60 57 47.5	F G	.....	4.9	7	Square skeleton mast. 3.8	Year round.
							Chart:4308 Edn 09/03	
720	Marchant Ledge light buoy CJ18	W. side of inlet, on end of breakwater. 45 30 11.6 60 57 42.2	F R	4s	.....	Red, marked "CJ18".	Winter spar. Seasonal.	
							Chart:4308 Edn 09/03	
721 H3396	Petit-de-Grat breakwater	On outer end of breakwater at N. entrance to Petit-de- Grat Inlet. 45 31 04.5 60 57 02.9	Fl G	6s	5.4	3	Triangular skeleton mast. 3.8	Flash 1 s; eclipse 5 s Seasonal.
							Chart:4308 Edn 09/03	
722 H3376	Green Island	Summit of island. 45 28 41.3 60 53 57.6	Fl(2) W	20s	34.1	10	White cylindrical tower. 11.5	Flash 2 s; eclipse 2 s; flash 2 s; eclipse 14 s. Emergency light. Year round.
							Chart:4308 Edn 09/03	

**SECTION 5 – Edition 09/2003**  
**LIST OF LIGHTS, BUOYS AND FOG SIGNALS CORRECTIONS**

No.	Name	Position ----- Latitude N. Longitude W.	Light Characteristics	Focal Height in m. above water	Nomi- nal Range	Description ----- Height in meters above ground	Remarks ----- Fog Signals
723	Orpheus Rock light and bell buoy NQ1	E. side of Orpheus Rock. 45 28 41.3 60 51 00.6	F G	4s	.....	Green, marked "NQ1".	Winter spar. Seasonal.
							Chart:4308 Edn 09/03
724	Petite Anse light and bell buoy NS1	Off Petite Anse. 45 29 36.4 60 54 51.2	F G	4s	.....	Green, marked "NS1".	Seasonal.
							Chart:4308 Edn 09/03
725 H3377	Petite Anse range	45 29 43 60 56 02.3	F R	.....	4.5	Triangular skeleton mast, white daymark, red vertical stripe. 3.8	Visible in line of range. Seasonal.
726 H3377.1		271°35' 207.6m from front.	F R	.....	4.9	Triangular skeleton mast, white daymark, red vertical stripe. 2.8	Visible in line of range. Seasonal.
							Chart:4308 Edn 09/03
727	Beak Point (Petit Nez) Shoal light and whistle buoy NQ3	Off E. side of shoal. 45 33 08.9 60 50 59.6	F G	4s	.....	Green, marked "NQ3".	Seasonal.
							Chart:4308 Edn 09/03
729 H3392	Grandique Point	On beach. 45 35 38.2 61 01 19.8	F G	.....	8.6	White structure, red top. 8.8	Seasonal.
							Chart:4308 Edn 09/03
730 H3388	Hawk Island	Entrance to Poulamon Bay. 45 35 40.1 60 59 42.2	Fl G	4s	12.1	Triangular skeleton mast, enclosed lower portion, red and white rectangular daymark. 9.7	Visible from 240°30' to 265°30'. Seasonal.
							Chart:4308 Edn 09/03
730.5	Goillon Reef light buoy NT12	45 36 03.3 60 59 00.6	F R	4s	.....	Red, marked "NT12".	Seasonal.
							Chart:4308 Edn 09/03
731 H3384	Ouetique Island	On S. point. 45 36 35.2 60 57 26.3	Fl R	4s	23.3	Triangular skeleton tower, red and white rectangular daymark. 8.6	Seasonal.
							Chart:4308 Edn 09/03
732 H3386	River Bourgeois	On point, E. side of entrance. 45 37 32.8 60 56 51.2	F R	.....	7.4	8 Triangular skeleton tower, red and white rectangular daymark. 6.9	Seasonal.
							Chart:4308 Edn 09/03
925.2	Pugwash Harbour light buoy UK2	NW. of Pugwash Point. 45 54 06.3 63 41 18.8	Fl R	4s	.....	Red, marked "UK2".	Seasonal.
							Chart:4498 Edn 09/03
925.4	Pugwash Harbour Entrance light buoy UK3	N. of Pugwash Road. 45 52 54.2 63 41 40	Q G	1s	.....	Green, marked "UK3".	Seasonal. Winter spar.
							Chart:4498 Edn 09/03

**SECTION 5 – Edition 09/2003**  
**LIST OF LIGHTS, BUOYS AND FOG SIGNALS CORRECTIONS**

No.	Name	Position ----- Latitude N. Longitude W.	Light Characteristics	Focal Height in m. above water	Nomi- nal Range	Description ----- Height in meters above ground	Remarks ----- Fog Signals
926 H1290	<b>Pugwash</b>	On Fishing Point. 45 52 16 63 40 43	Iso R	6s	17.4	15 White rectangular skeleton tower. 15.5	Emergency light. Seasonal.
<b>Chart:4498 Edn 09/03</b>							
927 H1292	<b>Biglow Point range</b>	On the point, eastward of point. 45 51 16 63 40 56	F G	.....	15.2	15 Red square skeleton tower, white daymark, red vertical stripe. 5.0	Visible in line of range. Seasonal.
928 H1292.1		160°32' 479 m from front.	F G	.....	25.0	15 Red square skeleton tower, white daymark, red vertical stripe. 8.1	Visible in line of range. Seasonal.
<b>Chart:4498 Edn 09/03</b>							
929	<i>Pugwash Road light buoy UK7</i>	45 51 57.1 63 41 14.5	<i>F</i> G	4s	.....	..... <i>Green, boat type, marked "UK7".</i>	<i>Seasonal. Winter spar.</i>
<b>Chart:4498 Edn 09/03</b>							
929.3	<i>Pugwash Road Turning light buoy UK9</i>	45 51 51.2 63 41 01.8	Q G	1s	.....	..... <i>Green, boat type, marked "UK9".</i>	<i>Seasonal. Winter spar.</i>
<b>Chart:4498 Edn 09/03</b>							
929.5	<i>Pugwash Bar North light buoy UK11</i>	45 51 51.6 63 40 52.3	<i>F</i> G	4s	.....	..... <i>Green, boat type, marked "UK11".</i>	<i>Seasonal. Winter spar.</i>
<b>Chart:4498 Edn 09/03</b>							
930	<i>Pugwash Channel light buoy UK13</i>	45 51 52 63 40 30.7	Q G	1s	.....	..... <i>Green, boat type, marked "UK13".</i>	<i>Seasonal. Winter spar.</i>
<b>Chart:4498 Edn 09/03</b>							
931 H1296	Steven Point range	On shore, N. of point. 45 51 52.3 63 40 03.5	Iso R	1s	9.7	4 Square skeleton tower, white daymark, fluorescent orange vertical stripe. 5.5	Visible in line of range. Seasonal.
932 H1296.1		086°22' 470.2 m from front.	Iso R	4s	27.1	5 Square skeleton tower, white daymark, fluorescent orange vertical stripe. 6.5	Visible in line of range. Seasonal.
<b>Chart:4498 Edn 09/03</b>							
933	<i>Pugwash Channel 1<sup>st</sup> Turn light buoy UK16</i>	45 51 49.8 63 40 30.3	Q R	1s	.....	..... <i>Red, boat type, marked "UK16"</i>	<i>Seasonal. Winter spar.</i>
<b>Chart:4498 Edn 09/03</b>							
934	<i>Pugwash Channel light buoy UK18</i>	45 51 44.8 63 40 22.7	Q R	1s	.....	..... <i>Red, boat type, marked "UK18".</i>	<i>Seasonal. Winter spar.</i>
<b>Chart:4498 Edn 09/03</b>							

**SECTION 5 – Edition 09/2003**  
**LIST OF LIGHTS, BUOYS AND FOG SIGNALS CORRECTIONS**

No.	Name	Position ----- Latitude N. Longitude W.	Light Characteristics	Focal Height in m. above water	Nomi- nal Range	Description ----- Height in meters above ground	Remarks ----- Fog Signals	
<b>ATLANTIC</b>								
935 H1300	<b>Fishing Point range</b>	On point. 45 52 10.6 63 40 27.2	F G	.....	8.3	15	Red square skeleton tower, white daymark, red vertical stripe. 4.1	Visible in line of range. Seasonal.
936 H1300.1		350°30' 258.3m from front.	F G	.....	12.3	15	Red square skeleton tower, white daymark, red vertical stripe. 8.1	Visible in line of range. Seasonal.
937	<i>Pugwash Channel light buoy UK19</i>	45 51 39.7 63 40 17.9	<i>F</i> G	4s	.....	.....	<i>Green, boat type, marked "UK19".</i>	<i>Seasonal. Winter spar.</i>
937.5	<i>Pugwash Channel light buoy UK25</i>	<i>W. of Pineo Point. 45 51 11.3 63 40 11</i>	Q G	1s	.....	.....	<i>Green, boat type, marked "UK25".</i>	<i>Seasonal. Winter spar.</i>
937.8	<i>Pugwash Harbour light buoy UK28</i>	45 51 09.6 63 40 14.8	<i>F</i> R	4s	.....	.....	<i>Red, boat type, marked "UK28".</i>	<i>Seasonal.</i>
938	<i>Page Point North light buoy UK30</i>	<i>N. of point. 45 51 03.9 63 40 02</i>	<i>F</i> R	4s	.....	.....	<i>Red, boat type, marked "UK30".</i>	<i>Seasonal. Winter spar.</i>
938.5	<i>Page Point East light buoy UK32</i>	<i>NE. of point. 45 51 00.8 63 39 56.2</i>	Q R	1s	.....	.....	<i>Red, boat type, marked "UK32".</i>	<i>Seasonal. Winter spar.</i>
939 H1291	<b>Bergeman Point range</b>	On point. 45 51 42.2 63 42 30.8	Iso W	1s	11.8	.....	Square skeleton tower, white daymark, red vertical stripe. 5.0	Seasonal.
940 H1291.1		205°12' 168.6m from front.	Iso W	4s	16.6	.....	Square skeleton tower, white daymark, red vertical stripe. 9.6	Seasonal.
1330.4	<i>Bathurst Entrance light buoy EP10</i>	47 40 27.1 65 36 21.1	<i>F</i> R	4s	.....	.....	<i>Red, marked "EP10".</i>	<i>Seasonal.</i>
1377	<i>St. Godefroi light buoy AG1</i>	48 04 21.9 65 06 57.4	<i>F</i> G	4s	.....	.....	<i>Green, marked "AG1".</i>	<i>Seasonal.</i>
1378	<i>St. Godefroi light buoy AG2</i>	48 04 21.4 65 06 56.7	<i>F</i> R	4s	.....	.....	<i>Red, marked "AG2".</i>	<i>Seasonal.</i>
1482.7	<i>Havre de la Grande Entrée light buoy YC15</i>	47 33 26.2 61 33 40.8	Q G	1s	.....	.....	<i>Green, marked "YC15".</i>	<i>Seasonal.</i>

Chart:4498  
Edn 09/03

Chart:4498  
Edn 09/03

Chart:4498  
Edn 09/03

Chart:4498  
Edn 09/03

Chart:4498  
Edn 09/03

Chart:4498  
Edn 09/03

Chart:4498  
Edn 09/03

Chart:4498  
Edn 09/03

Chart:4920  
Edn 09/03(G03-104)

Chart:4486  
Edn 09/03(L03-236)

Chart:4486  
Edn 09/03(L03-237)

Chart:4954  
Edn 09/03(L03-205)

**SECTION 5 – Edition 09/2003**  
**LIST OF LIGHTS, BUOYS AND FOG SIGNALS CORRECTIONS**

No.	Name	Position ----- Latitude N. Longitude W.	Light Characteristics	Focal Height in m. above water	Nomi- nal Range	Description ----- Height in meters above ground	Remarks ----- Fog Signals
-----	------	--	--------------------------	--	-----------------------	--	---------------------------------

**ATLANTIC**

1654	Mont-Louis ODAS light buoy 45138						Delete from list.	Chart:4026 Edn 09/03(L03-226)	
2002 H2350	Barre à Boulard range	On edge of cliff. 46 39 33.8 71 52 34.6	F	W	.....	51.7	20	Square skeleton tower, fluorescent orange daymark, black vertical stripe.  18.3	Visible in line of range. Emergency light. Year round.
2003 H2350.1		054°03' 1042.8m from front.	F	W	.....	71.3	20	Rectangular skeleton tower, fluorescent orange daymark, black vertical stripe.  19.0	Visible in line of range. Emergency light. Year round.
								Chart:1314 Edn 09/03(L03-251,252)	

**INLAND**

1082	Île Parisienne	On SW. extremity of island. 46 38 42.9 84 43 26.5	Fl	W	10s	16.1	14	White hexagonal tower.	Flash 1 s; eclipse 9 s Operational at night only. Emergency light. Seasonal.	Chart:14884(U.S.) Edn 09/03(D03-050)
1762	Mile 432.4 range	On W. shore. 64 08 12 124 26 35	F	W	.....	30.5	.....	Square skeleton tower, white daymark, fluorescent orange vertical stripe.  7.6	Visible in line of range. Seasonal.	
1763		336° 91.4m from front.	F	W	.....	44.5	.....	Square skeleton tower, white daymark, fluorescent orange vertical stripe.  7.6	Visible in line of range. Seasonal.	
								Chart:6415 Edn 09/03(A03-009,010)		

**CANADIAN COAST GUARD  
MARINE INFORMATION REPORT AND SUGGESTION SHEET**

Navigating Officer or Observer: \_\_\_\_\_ Captain: \_\_\_\_\_

Ship (or address) \_\_\_\_\_

If Merchant Vessel add Line or Company with Head Office address: \_\_\_\_\_

General locality: \_\_\_\_\_

Subject: \_\_\_\_\_

Approx. position: \_\_\_\_\_ Lat. \_\_\_\_\_ Long \_\_\_\_\_

Chart No. used to plot: \_\_\_\_\_ (Corrected to N/M No. \_\_\_\_\_ of 2000 ) \_\_\_\_\_ Publications

affected: (Quote Volume and page)

\* Full details (Attach additional sheets as necessary)

Time (UTC) \_\_\_\_\_ Date \_\_\_\_\_

**INSTRUCTIONS:**

Mariners are requested to notify the responsible authorities when new or suspected dangers to navigation are discovered, changes are observed in aids to navigation, or corrections to publications are seen to be necessary.

*\* In the case of new or suspected dangers to navigation, it is important that all details be given in order to aid with future investigations. Items of interest include heights, depths, physical description, type of bottom and equipment method used to position the item. It is helpful to mark details on chart, which will be promptly replaced by the Canadian Hydrographic Service.*

Reports should be made to the nearest Marine Communications and Traffic Services Centre and should be confirmed in writing to:

Director, Navigation Systems  
Canadian Coast Guard  
Department of Fisheries and Oceans  
Ottawa, Ontario, K1A 0E6

In the case of information Canadian  
navigational aids or the List Department  
of Lights, Buoys and Fog Signals.

**OR**

Dominion Hydrographer  
Canadian Hydrographic Service  
Department of Fisheries and Oceans  
Ottawa, Ontario, K1A 0E6

In the case of new or suspected  
dangers to navigation, or where  
corrections to "Sailing Directions"  
appear to be necessary.