



Canada

Canada

VOL 24 MONTHLY EDITION NO 6
JUNE 25, 1999

EASTERN EDITION OF NOTICES TO MARINERS

Published monthly by the

CANADIAN COAST GUARD

NOTICES

1100 to 1143

CONTENTS

	Page
SEC. I Safety and General Information	1 - 3
SEC. II Chart Corrections	4 - 16
SEC. III Radio Aids to Marine Navigation Corrections	17 - 25
SEC. IV Sailing Directions and Small Craft Guide Corrections.....	27 - 41
SEC. V Light List Corrections	43 - 57

Marine Navigation Services
Directorate
Marine Aids

RECYCLED PAPER

Internet:

<http://www.notmar.com>

ADVISORY

NOTICES TO SHIPPING (WRITTEN AND BROADCAST)

The Canadian Coast Guard is implementing a number of changes to the aids to navigation system in Canada.

These changes are advertised as Notices to Shipping (Broadcast and Written) by the Canadian Coast Guard and are followed up with Notices to Mariners, then charts are updated by hand correction, reprints or new editions.

The publication of Notices to Mariners and chart revisions are being delayed by the volume of changes that are taking place.

Mariners are advised that all relevant Written Notices to Shipping should be kept until superseded by Notices to Mariners or through revised charts issued by the Canadian Hydrographic Service.

Written Notices to Shipping are published weekly and are available from local Canadian Coast Guard Offices.

The Canadian Hydrographic Service is reviewing the impact of these changes with the Canadian Coast Guard and together we are preparing an action plan on the issuing of chart revisions.

For further information contact your local Canadian Coast Guard office.

Newfoundland

St. John's MCTS Centre
Phone: (709) 772-2083
Fax: (709) 772-6285

Maritimes

Maritimes Regional Operations Centre
Toll Free in Maritimes 1-800-565-1633
Phone: (902) 426-6030
Fax: (902) 426-6334
<http://www.mar.dfo.mpo.gc.ca/cg/ops/roc.htm>
Website E-Mail: ROCWeb@mar.dfo-mpo.gc.ca

Laurentienne

GC\SO\COR
Notices to Shipping
Phone: (418) 648-5410
Fax: (418) 648-7244
E-Mail: OPSAVIS@dfo-mpo.gc.ca

Central & Arctic

Sarnia MCTS Centre
Toll Free in Ontario 1-800-265-0237
Phone: (519) 337-6360
Fax: (519) 337-2498

Pacific

Vancouver Regional Marine Information Centre
Phone: (604) 666-6011
Fax: (604) 666-8453

EXPLANATORY NOTES

Geographical positions refer directly to the graduations of the largest scale Canadian Hydrographic chart unless otherwise indicated.

Bearings refer to the true compass and are measured clockwise from 000° (North) clockwise to 359°; those relating to lights are from seaward.

Visibility of lights is that in clear weather.

Depths - The units used for soundings (metres, fathoms or feet) are stated in the title of each chart.

Elevations are normally given above Higher High Water, Large Tides unless otherwise indicated.

Original Canadian Information - A star (*) adjacent to the Notice number indicates that this notice is based on original Canadian information.

Distances may be calculated as follows:

1 nautical mile	= 1 852 metres (6,076.1 feet)
1 statute mile	= 1 609.3 metres (5,280 feet)
1 metre	= 3.28 feet

Temporary & Preliminary Notices are indicated by a (T) or a (P) after the Notice number. Nautical charts and publications are not hand amended for Temporary (T) and Preliminary (P) Notices to Mariners. Listings of Charts Affected by Temporary and Preliminary Notices to Mariners are revised and promulgated quarterly, in Section I. Reference should be made to the latest published listing and to the monthly editions of Notices to Mariners published subsequently.

Please note that, in addition to the temporary and preliminary changes normally advertised as (T) and (P) Notices, there are a significant number of permanent changes to navigational aids that have been advertised as Preliminary Notices to Mariners while charts are being updated for new editions.

Marine Information Report & Suggestion Sheet- Mariners are requested to notify the responsible authorities when new or suspected dangers to navigation are discovered, changes observed in aids to navigation or corrections to publications are seen to be necessary. Such communications can be made using the *Marine Information Report & Suggestion Sheet* inserted on the last page of each monthly edition of *Notices to Mariners*.

Monthly edition of Notices to Mariners - *Notices to Mariners* are issued free of charge on a monthly basis. Mariners now have a choice between specific *Regional* issue(s) they wish to receive. Requests to be placed on or removed from the mailing list should be made by using the form inserted on page *xiii* of each monthly edition. Notification of changes to the mailing addresses, regional issues and/or number of copies required should also be transmitted by means of this form.

Canadian Nautical Charts & Publications - A source list of *Canadian Nautical Charts & publications* is published in *Notice No. 14* of the current *Annual Edition of Notices to Mariners*. The source supply and the prices effective at the time of printing are listed. This list is periodically updated in the monthly edition of *Notices to Mariners*.

NOTE: Cette publication est aussi disponible en français.

DGPS INITIAL OPERATIONAL SERVICE

The Canadian Coast Guard (CCG) announces that the Differential Global Positioning Service (DGPS) Initial Operational Service (IOS) is available for positioning and navigation.

IOS means the service will provide a DGPS broadcast using the type 9 RTCM message for pseudorange corrections at a data transmission rate of 200 baud. Refer to Radio Aids to Marine Navigation (RAMN) for estimated advertised coverage for each differential station.

Although the service is IOS, users may experience service interruptions without advance notice. Further, CCG advises that IOS DGPS broadcasts should not be used under any circumstances where a sudden system failure or inaccuracy could constitute a safety hazard. Following a one year verification period, the DGPS service will be declared as being a Full Operational Service (FOS).

Users are also advised that differential corrections are based on the NAD 83 datum position of the reference station antenna and positions obtained using DGPS should be referenced to this coordinate system only. DGPS receivers must be set to the WGS 84 datum in order to obtain optimum positioning accuracy.

Table of Stage 1 DGPS Reference Stations					
Station Name	Id Nos of Ref. Stations	DGPS Station ID	Geogr. Pos. Latitude Longitude	Frequency [khz]	Bits/sec.
Alert Bay BC	300,301	909	50 35 N 126 55 W	309	200
Amphitrite Pt BC	302,303	908	48 55 N 125 33 W	315	200
Richmond BC	304,305	907	49 11 N 123 07 W	320	200
Sandspit BC	306,307	906	53 14 N 131 49 W	300	200
Cardinal ON	308,309	919	44 47 N 75 25 W	306	200
Warton ON	310,311	918	44 45 N 81 07 W	286	200
St. Jean Richelieu QUÉ	312,313	929	45 19 N 73 19 W	296	200
Lauzon QUÉ	316,317	927	46 49 N 71 10 W	309	200
Rivière-du-Loup QUÉ	318,319	926	47 46 N 69 36 W	300	200

Table of Stage 1 DGPS Reference Stations					
Station Name	Id Nos of Ref. Stations	DGPS Station ID	Geogr. Pos. Latitude	Frequency [khz]	Bits/sec.

			Longitude		
Moisie QUÉ	320,321	925	50 12 N 66 07 W	313	200
Partridge Island NB	326,327	939	45 14 N 66 03 W	295	200
Pt. Escuminac NB	332,333	936	47 04 N 64 48 W	319	200
Western Head NS	334,335	935	43 59 N 64 39 W	312	200
Fox Island NS	336,337	934	45 20 N 61 05 W	307	200
Cape Race NFLD	338,339	940	46 46 N 53 11 W	315	200
Cape Ray NFLD	340,341	942	47 38 N 59 14 W	290	200
Cape Norman NFLD	342,343	944	51 30 N 55 49 W	310	200

DGPS USER ALERT

Currently, seventeen DGPS stations are providing Initial Operational Service (IOS) in Canada. The DGPS station at Rigolet, Labrador will be installed in November 30/98. Extensive validation of operational performance is being conducted throughout 1998. Full Operational Service (FOS) will follow after successful validation. Mariners are reminded to use caution when using DGPS until the Service is declared fully operational.

The Canadian Coast Guard has recently received reports of DGPS receivers apparently ignoring the broadcast alarm which should signal the immediate discontinuation of a particular satellite correction. Reports indicate that some user equipment does not properly recognize this "do-not-use" correction flag and as a result erroneously processes it as a correction. This can result in position errors as large as 15 kilometers while the receiver is in DGPS mode. DGPS users are advised that they should contact the manufacturer of their equipment immediately to determine if they require a receiver upgrade.

Apart from this, no major difficulties with DGPS implementation have been experienced to date nor are any expected in the future.

DISCREPANCY REPORT FOR DGPS USERS

The Canadian Coast Guard is currently implementing the Differential Global Positioning System in Canada. Currently, seventeen DGPS stations are providing Initial Operational Service (IOS) in Canada. The DGPS station at Rigolet, Labrador will be installed in November 30/98.

Following a service validation period, it is expected that the DGPS service will be announced as providing a Full Operational Service (FOS) in March 1999. The fully operational DGPS service is expected to meet the advertised Levels of Service standards and all service guarantees will be provided with FOS.

Throughout the service validation period, the Coast Guard will be conducting numerous tests of the differential service. To assist the Coast Guard in this validation testing, mariners are requested to complete the attached anomaly report. Please take note of any DGPS service anomalies you experience and forward the completed form to the Director Marine Aids, Fisheries and Oceans Canada, 200 Kent Street, Station 5130, Ottawa, ON, K1A 0E6.

GPS "ROLLOVER" AUGUST 1999

The Global Positioning System accounts for time by using a number for every week the service is in operation and accounts for the seconds within each numeric week. It counts weeks using a starting point of midnight (0000) on the evening of January 5, 1980 / morning of January 6, 1980 (UTC), and has increased its count by 1 for each week since then. Both week and seconds are broadcast as part of the GPS message provided by the satellites and are used by receivers in their computations. The GPS week number field in this message can only provide for numbers up to 1024 which means that, at the completion of the week 1023, the week number field will roll over from 1023 back to 0. This will occur at midnight 21-22 August 1999. On 22 August 1999, unless repaired, many GPS receivers will claim that it is 6 January 1980.

It will be the responsibility of the user to account for this changeover, the satellite themselves will simply start broadcasting the new week number. How it will affect your particular GPS unit will depend on what brand and model of receiver you have. Some receivers may merely display inaccurate date information, but others may also calculate incorrect navigation information or might stop providing positions. If the rollover hasn't been taken into account at the time your GPS receiver was designed and built, then the unit might have problems. Some units will require a software upgrade. Mariners are advised to consult with the manufacturers of their receiver's compliance to GPS rollover.

DGPS station anomaly report / Rapport d'anomalie des stations DGPS

With the purpose of constantly evaluating the quality of the DGPS service offered, the Canadian Coast Guard is providing the mariner with the following anomaly report. This report will allow us to get well-supported information concerning the anomaly and thus, will facilitate the identification of the origin of the problem. Please fill accordingly each section of this report and forward it by the suggested ways. You will find a legend at the end of this document.

Avec le souci d'évaluer constamment la qualité du service DGPS offert, la Garde côtière met à la disposition du navigateur le présent rapport d'anomalie. Ce rapport servira à bien documenter l'anomalie et, de ce fait, facilitera l'identification ou la recherche de la source du problème. Nous vous prions de bien remplir chaque section de ce rapport et de l'acheminer de la façon suggérée. Vous trouverez une légende à la fin de ce document.

User informations / Renseignements sur l'utilisateur

Vessel name / Nom du navire: _____ Destination: _____
Vessel position at the beginning of the anomaly /
Position du navire au début de l'anomalie : _____
Vessel position at the end of the anomaly /
Position du navire à la fin de l'anomalie : _____

Anomaly report / Rapport d'anomalie

Date and time of the anomaly / Date et heure de l'anomalie: _____ Duration / Durée: _____
Number of satellites tracked on GPS receiver / Nombre de satellites reçu par le récepteur: _____
DGPS site using / Station DGPS utilisée: Freq.: _____ kHz SS: _____ dB SNR: _____
DOP Geometry / Géométrie DOP : _____
User receiver operates correctly with other DGPS sites? /
Votre équipement DGPS fonctionne-t-il normalement à l'utilisation d'autres stations DGPS ?:
Yes/ Oui _____ No / Non _____
Comments / Commentaires: _____

Point of contact / Personne -ressource: Name/ Nom: _____
Phone / Téléphone : _____

Weather conditions / Conditions météo

Winds / Vents : Direction: _____ Speed / Vitesse: _____ KTS
Temp. °C: _____ VIS: _____ N.M.
Sea State / État de la mer : _____
Bearing and range to electrical storm /
Direction et distance de l'orage : _____
Time of the storm / Heure de l'orage: _____ U

Essential informations on user equipment to fill / Renseignements indispensables sur l'équipement à remplir:

User equipment informations / Renseignements sur l'équipement

GPS receiver / Récepteur GPS : Make / Fabricant: _____ Model: _____
DGPS beacon receiver / Démodulateur DGPS : Make / Fabricant : _____ Model: _____
Gyro interface with GPS / Gyro intégré avec le GPS? Yes / Oui : _____ No / Non : _____
DGPS interfaced with an ECDIS / DGPS intégré dans un SVCEI? Yes / Oui: _____ No / Non : _____
If yes, please fill below / Si oui, S.V.P. compléter ci-dessous:
ECDIS / SVCEI : Make / Fabricant: _____ Model: _____
Radar image interfaced / Image radar intégrée?: Yes / Oui: _____ No / Non: _____
Gyro interfaced with ECDIS / Gyro intégré avec SVCEI? Yes / Oui: _____ No / Non: _____
Permanent installation or in evaluation / Installation permanente ou en évaluation : _____

This report can be sent the following ways / Ce rapport peut être acheminé selon les façons suivantes:

- 1) Fax / Par télécopieur : 613-998-8428 attention AWAD.
- 2) Mail / Par la poste: Director Marine Aids
Fisheries and Oceans Canada
200 Kent Street, Station 5130
Ottawa, ON
K1A 0E6.

Canada

Legend/ Légende

Position : Position can be provided by latitude, longitude, bearing and distance, location of a buoy, etc.
La position peut être donnée en latitude, longitude, relèvement et distance, emplacement de bouée, etc.

KTS : Wind speed in knots / Vitesse du vent en noeuds.

N.M. : Visibility in Nautical Miles / Visibilité en milles nautiques.

Freq. kHz : Frequency in kilohertz / Fréquence en kilohertz .

SS : Signal strength in decibel / Force de signal en décibel.

SNR : Signal to noise ratio in decibel / Rapport signal-bruit en décibel .

DOP (dilution of precision) : Measure of the geometrical « strength » of the GPS satellite configuration. The DOP is measured on a scale of 1 to 10 / Mesure de la « force » géométrique de la configuration satellite. Le DOP est mesuré sur une échelle de 1 à 10

SVCEI / ECDIS : Electronic Chart Display and Information System / Système de Visualisation de Cartes Electroniques et d'Information .

IMPORTANT NOTICE TO USERS

The Canadian Coast Guard Marine Aids Modernization Program

- The Canadian Coast Guard is initiating an aids to navigation modernization program which takes advantage of modern technology and will result in a more equitable, safe, cost-effective and environmentally friendly service across Canada. Low maintenance buoys, solar power, the elimination of diesel power and the application of national provision and design standards, will be used to realize these objectives.
- In consultation with local users, aids to navigation which are redundant, exceed the national standards or should not be publicly funded, will be downsized, privatized or discontinued.
- Regional plans as well as detailed Notices to Shipping and Notices to Mariners will be issued and distributed in the usual manner in advance of all changes to aids to navigation. All users are encouraged to participate in local consultations and to monitor these Notices. It will be every user's responsibility to adapt to the changes and to take the appropriate measures.

1. Redundant Aids to Navigation

Many conventional aids to navigation were established for commercial mariners who now use radar. As a result these users no longer require as many landfall shore lights, large lighted buoys and fog signals and support their discontinuance.

However, before these commercially redundant marine aids are removed, the Coast Guard is assessing, where required, the local needs of small craft operators and redesigning the old commercial aids to meet these needs within national provision policies and design standards.

Coast Guard policy does not provide for the retention of fog horns for pleasure craft, due to the high cost to provide such a service across Canada. However, where practical and where there is local support, the existing redundant fog horns are being transferred to local authorities at no cost.

The conversion of lightstations to solar power allows major economic and environmental benefits by allowing removal of fuel tanks and diesel generators. Although this eliminates the need for many structures, the Coast Guard will protect all heritage lightstations through continued operation or transfer to provincial, municipal or other authorities for local use.

2. Aids to Navigation Standards

In consultation with local users, all aids to navigation systems across Canada are under review. National system design standards will be used to assess these systems. Systems that do not meet these standards will be upgraded; those systems that exceed them will be downsized.

Adjustments in some channels will result in an increase or a decrease in the number of buoys and/or the conversion of some lighted buoys to unlighted buoys displaying reflective material.

3. Private Aids to Navigation

Although Coast Guard policy does not provide for the establishment of aids to navigation in inadequately charted waters, or where the traffic volume does not justify the cost of the system, some have been established in the past. These aids to navigation will be transferred to local authorities at no cost, with Coast Guard retaining design and regulatory authority under the *Private Buoy Regulations*.

NEW INITIATIVES

The Canadian Coast Guard is also introducing a new differential correction service to augment the satellite-based Global Positioning System (GPS), with 18 transmitting stations fully operational in 1998.

This Differential Global Positioning System (DGPS), will improve the accuracy and integrity of GPS and will enable mariners who are equipped with the appropriate receivers to identify their precise position in most major southern Canadian waters, including the Great Lakes and the St. Lawrence River.

The use of DGPS in conjunction with Electronic Chart Display and Information Systems (ECDIS), will greatly improve navigation accuracy. The expanding use of this new technology is expected to increase marine safety and thus provide greater environmental protection to Canadian waters. It is also believed that implementation of DGPS will allow further adjustment to conventional aids in the future.

All mariners and shipowners are encouraged to equip their vessels with GPS receivers which have the capability to receive the Differential signals, particularly where there is frequent risk of reduced visibility.

The Canadian Coast Guard believes that the availability of GPS, particularly when augmented by the Differential service, will make Loran C obsolete. Consultations are underway to assess the impact of discontinuing Loran C in Canada.

NEWFOUNDLAND REGION

The Canadian Coast Guard is planning to further modernize its marine aids to navigation service. Changes will include adjusting all service levels to national standards between 1997 and the year 2000 and reducing some conventional aids services based on the availability of the Global Positioning System, Differential Global Positioning System (DGPS) and the Electronic Chart Display Information System (ECDIS). The new electronic systems will supplement the remaining conventional aids system, permitting continued maintenance of a safe service at lower cost.

More detailed information concerning each of these proposed changes will be provided in each region or geographic area by Notices to Shipping and Notices to Mariners, allowing users time to comment prior to finalizing planned changes. Further Notices to Shipping and Notices to Mariners will also be issued at the time of all changes.

Mariners and representatives of user groups wishing to provide comments or recommendations on this or any subsequent notice may write to:

Aids to Navigation Superintendent
Department of Fisheries & Oceans
Canadian Coast Guard Directorate
P.O. Box 5667
St. John's, NFLD.
A1C 5X1

MARITIMES REGION

The Canadian Coast Guard is planning to further modernize its marine aids to navigation service. Changes will include adjusting all service levels to national standards between 1997 and the year 2000 and reducing some conventional aids services based on the availability of the Global Positioning System, Differential Global Positioning System (DGPS) and the Electronic Chart Display Information System (ECDIS). The new electronic systems will supplement the remaining conventional aids system, permitting continued maintenance of a safe service at lower cost

IMPLEMENTATION OF THE FOLLOWING CHANGES WILL BEGIN WITHIN COAST GUARD MARITIMES REGION ON APRIL 1, 1997.

MEASURES
1) Privatization of aids systems in pleasure craft channels and/or conversion of some lighted buoys to unlighted buoys and removal of some aids in pleasure craft channels.
2) Privatization of aids systems in inadequately and uncharted waters and where there is a low volume of users.
3) Aids to navigation systems in Saint-John and Yarmouth Harbours will be restructured to meet national standards.
4) Decommissioning of some light stations (major reference lights) and downsizing of others to minor lights.
5) Discontinuance of some fog horns.
6) Removal of some coastal fixed and floating aids.

Over the next year, more detailed information concerning each of these proposed changes will be provided in each region or geographic area by Notices to Shipping and Notices to Mariners, allowing users time to comment prior to finalizing planned changes. Further Notices to Shipping and Notices to Mariners will also be issued at the time of all changes.

Mariners and representatives of user groups wishing to provide comments or recommendations on this or any subsequent notice may write to:

Regional Superintendent
Aids to Navigation
P.O. Box 1000
Dartmouth, N.S.
B2Y 3Z8
(902) 426-3151

LAURENTIAN REGION

The Canadian Coast Guard is planning to further modernize its marine aids to navigation service. During the period between 1997 and year 2000, these changes will include levels of service adjustments to meet the national standards as well as the reduction of some conventional aids services based on the availability of the Global Positioning System, Differential Global Positioning System (DGPS) and the Electronic Chart Display Information System (ECDIS). The new electronic systems will supplement the remaining conventional aids system, permitting continued maintenance of a safe service at lower cost.

The following table shows an update of changes already implemented in 1997/98 and hypothetical service cuts considered until year 2000.

IDENTITY OF MEASURES	97/98	98/99	99/00
1) <u>Introduction of a DGPS service (5 stations)</u>	5	-	-
2a) <u>25% reduction of main commercial channel buoy service (79 lighted buoys removed and 75 changed for unlighted spar buoys).</u>	79 buoys removed; 56 changed for unlit	19 buoys to be changed (unlit)	-
2b) <u>5% reduction of main commercial channel buoy service (29 lighted buoys changed for unlighted spar buoys)</u>	-	29	29
3) <u>Removal or privatization of 12 major reference lights in commercial and/or fishing channels</u>	8 (one will no longer be removed)	3	-
4) <u>Privatization or removal of 272 aids to navigation (unique users and/or in inadequately charted waters)</u>	187	85	-
5) <u>33% reduction (50) of reference lights or fog signals in commercial and/or fishing channels</u>	6 (2 fixed aids + 4 fog signals)	25	19
6) <u>Removal of 20 fixed aids or fog signals in pleasure craft channels</u>	5 (including 2 fog signals)	-	15

NOTE: - measures for 1997/98 and 1998/99 will be implemented after adjustment of *Levels of service*
 - measures for 1999/2000 will be implemented after adjustment of *Levels of service* and/or according to availability of DGPS/ECDIS technologies.

In the following month, more details about these changes will be provided by *Notices to Shipping* and *Notices to Mariners*. The Canadian Coast Guard will delay implementation of measures allowing users enough time to comment on planned changes. Further *Notices to Shipping* and *Notices to Mariners* will be issued when changes are implemented.

Mariners and representatives of users groups wishing to transmit their comments or recommendations on this Notice may do so by writing to:

AIDS TO NAVIGATION SUPERINTENDENT
 101 CHAMPLAIN BOULEVARD, QUÉBEC (QUÉ), G1K 7Y7

CENTRAL & ARCTIC REGION

Aids Modernization consultations are continuing throughout the Central and Arctic Region of the Canadian Coast Guard. Mariners are urged to continue to read and monitor Notices to Shipping and Notices to Mariners for the most recent concerning adjustments to aids to navigation. You may also access the Central and Arctic Website at www.ccg-gcc.gc.ca/cen-arc/main.htm for further information.

Mariners and representatives of user groups seeking clarification, having questions, or wishing to provide comments or recommendations concerning any aids to navigation notice may to contact:

Superintendent Marine Aids Program
Central and Arctic Region
201 Front Street North, Suite 703
Sarnia, Ontario, N7T 8B1
Telephone (519) 383-1859 or (519) 383-1861
Facsimile (519) 383-1989

MONTHLY EDITION OF NOTICES TO MARINERS

MAILING LIST CHANGES

Director General,
Marine Navigation Services Directorate,
Canadian Coast Guard,
Department of Fisheries and Oceans,
Ottawa, Ontario,
K1A 0E6

Telephone - (613) 990-3037
Facsimile - (613) 998-8428

Please indicate which edition you would like to receive.

EASTERN EDITION (will be comprised of Arctic, Newfoundland, Maritimes, Gulf & River St. Lawrence and Central areas) _____

WESTERN EDITION (will be comprised of Arctic and Pacific areas) _____

ADD _____ **AMEND** _____ **REMOVE** _____ **NO. OF COPIES** _____

OLD ADDRESS	
NAME	
STREET	APT
CITY	POSTAL CODE
PROVINCE	COUNTRY
NEW ADDRESS	
NAME	
STREET	APT
CITY	POSTAL CODE
PROVINCE	COUNTRY

ID number above address on label

or

Attach complete address label to this sheet

NATIONAL

CANADIAN COAST GUARD PUBLICATION - Amendment to the Radio Aids to Marine Navigation (Atlantic and Great Lakes) publication 1999.....	1143	17-25
CANADIAN HYDROGRAPHIC SERVICE - Information about CHS chart dealers.....	1140	1-3

NEWFOUNDLAND

LABRADOR COAST - NAIN, SANDY ISLAND AND CROWN ISLAND - Light and buoys.....	1127	5
- TURNAVIK ISLANDS TO WHITE BEAR ISLAND - Overlay.....	1138(P)	4
NEWFOUNDLAND, SOUTHEAST COAST - BONAVIDA BAY - INDIAN ARM - Chart amendments....	1136	4

MARITIMES

BAY OF FUNDY - DIGBY NECK - PETIT PASSAGE - BOARS HEAD - Light.....	1116	11
- PORT GREVILLE AND PORT GEORGE - Lights.....	1132	9
NEW BRUNSWICK - PASSAMAQUODDY BAY - ST. ANDREWS - TONGUE SHOAL - Radar reflector..	1125	11,12
NOVA SCOTIA - CAPE GEORGE - BALLANTYNES COVE - Lights and chart amendment.....	1124	6,7
NOVA SCOTIA, SOUTH COAST - SHELBURNE HARBOUR - GUNNING COVE - Buoy.....	1139	10
- WOODS HARBOUR - BIG LEDGE - Light.....	1134	10
NOVA SCOTIA, SOUTHEAST COAST - BEDFORD BASIN - Buoys and shoal.....	1121	8
- GREEN HARBOUR - HUNTS LANDING AND SHINGLE POINT - Buoys and light.....	1133	10
- HALIFAX HARBOUR - NORTHWEST ARM - Buoy.....	1128	7
- LAHAVE BANK - Buoy.....	1126	8
- LAHAVE ISLANDS TO ST. MARGARETS BAY - Buoys	1131	8,9
- SABLE ISLAND - Radiobeacon.....	1137	4,5
NOVA SCOTIA, SOUTHWEST COAST - INDIAN SLUICE - GREEN ISLAND AND BIG TUSKET ISLAND - Lights.....	1123	11
- TRINITY LEDGE - Wreck.....	1129	11
UNITED STATES, EAST COAST - NANTUCKET SHOAL - Buoys.....	1130	12

GULF AND RIVER ST. LAWRENCE

GULF OF ST. LAWRENCE - BRADOR BAY - Buoy.....	1106	4
- CHALEURS BAY - CHANDLER - Light, day beacon, breakwater and pontoon.....	1108(P)	9,10
- ÎLE D'ANTICOSTI - PORT MENIER - Shoal depths.....	1122(P)	9
- ÎLES DE LA MADELEINE - Buoys and marine farm.....	1117	6
- ÎLES DE LA MADELEINE - HAVRE AUBERT - Wreck.....	1135	5
- ÎLES DE LA MADELEINE - Marine farm.....	1105	5

GULF AND RIVER ST. LAWRENCE (ont'd)

QUÉBEC - OTTAWA RIVER - HAWKESBURY - Buoy.....	1114	14
- OTTAWA RIVER - HULL - Buoys.....	1100	15
- LAKE MEMPHREMAGOG SUNKEN ISLAND - Shoal depth.....	1101(P)	14
PRINCE EDWARD ISLAND - NORTH LAKE - Light.....	1118	7
PRINCE EDWARD ISLAND, SOUTH SIDE - WOOD ISLANDS - Range lights.....	1115	7
ST. LAWRENCE RIVER - POINTE-AU-PIC - Shoal depths.....	1104	12,13
- PORT DE SOREL - Shoal depths.....	1141(P)	14
- RIVIÈRE-DU-LOUP - Shoal depth.....	1119(T)	12
- SAINT-JEAN-PORT-JOLI - Shoal depths and breakwater.....	1120(P)	13,14

CENTRAL

LAKE HURON - SARNIA TO BAYFIELD - BRIGHTS GROVE - Vertical clearance.....	1109	16
- ST. JOSEPH CHANNEL - THESSALON HARBOUR - Buoy and light.....	1111	16
LAKE HURON - GEORGIAN BAY - SANS SOUCI ISLAND - ISLE OF BUTE - Results of survey.	1112	15
- WHALESBACK CHANNEL - Buoy.....	1113	15
NELSON RIVER - PLAYGREEN LAKE - Buoys.....	1110	16

1233	1120(P)	13,14
LC 1234	1104	12,13
	1119(T)	12
1312	1141(P)	14
1350	1141(P)	14
1361	1101(P)	14
1514	1114	14
1515	1100	15
2202	1112	15
	1113	15
2239	1113	15
2251	1111	16
2260	1109	16
LC 2284	1112	15
2289	1113	15
4000	1126	8
	1130	12

NUMERICAL INDEX OF CANADIAN CHARTS AFFECTED

Chart No.	Notice # Page	Page	Chart No.	Notice #	Page	Chart No.	Notice #
	1137	4,5					
LC 4001	1126 1130	8 12					
LC 4003	1126 1130 1137	8 12 4,5					
LC 4006	1126 1130 1137	8 12 4,5					
LC 4010	1132	9					
LC 4011	1116 1129	11 11					
LC 4012	1116 1129 1131	11 11 8,9					
LC 4013	1137	4,5					
LC 4023	1118	7					
LC 4045	1137	4,5					
LC 4098	1137	4,5					
LC 4099	1137	4,5					
4201	1121	8					
4202	1121 1128	8 7					
4209	1139	10					
4210	1134	10					
4211	1131	8,9					
LC 4230	1123 1129 1134	11 11 10					
LC 4240	1133	10					
LC 4241	1133	10					

NUMERICAL INDEX OF CANADIAN CHARTS AFFECTED

Chart No.	Notice # Page	Page	Chart No.	Notice #	Page	Chart No.	Notice #
	1139	10					
LC 4242	1134	10					
LC 4243	1123 1129	11 11					
4244	1123	11					
LC 4320	1131	8,9					
4332	1125	11,12					
4381	1131	8,9					
4384	1131	8,9					
4386	1131	8,9					
LC 4404	1115 1124	7 6,7					
4430	1122(P)	9					
LC 4451	1117	6					
LC 4462	1124	6,7					
4470	1106	4					
4483	1115	7					
4730	1127	5					
4855	1136	4					
4921	1108(P)	9,10					
LC 4951	1105 1117	5 6					
4957	1135	5					
5046	1138(P)	4					
5049	1127	5					
5052	1127	5					
6259	1110	16					

NUMERICAL INDEX OF CANADIAN CHARTS AFFECTED

Chart No.	Notice # Page	Page	Chart No.	Notice #	Page	Chart No.	Notice #
LC 8005	1130	12					
LC 8006	1126	8					
LC 8007	1137	4,5					
LC 8047	1127	5					

*** 1140 CANADIAN HYDROGRAPHIC SERVICE - Information about CHS chart dealers.**

1 - NEWLY APPOINTED CHART DEALERS

Association Sogerive Inc.
101, chemin de la Rive
C.P. 420, Succursale A
Longueuil, Québec
J4H 3Z2
Tel: (450) 442-9575
Fax: (450) 442-4357

Hot Knots Landing
R.R. #1, Forest Home Industrial Park
Box 74
Orillia, Ontario
L3V 6H1
Tel: (705) 327-9741
Fax: (705) 327-7036
Email: info@hotknots.com
Web: www.hotknots.com

R. & R. Marine Supply
550 East Portage Avenue
Sault Ste. Marie, MI 49783
U.S.A.
Tel: (906) 632-8934
Fax: (906) 632-6953

2- DEALER ADDRESS CHANGE

OLD ADDRESS

A/S Navicharts
Masteveien 3
P.O. Box 31
N-1483 Skytta, Norway
(Tel: (47) 67 06 11 50
Fax: (47) 67 06 00 15
Email: navicharts@online.no

Chase, Leavitt & Company Ltd.
10 Dana Street
Portland, ME 04112, U.S.A.
Tel: (207) 772-3751 1-800-638-8906
Fax: (207) 772-0297
Telex: 950027

Cornes & Co. Ltd.
Maritime Business Division
273 Yamashita-cho, Naka-Ku
Tel: (81) 45-650-1380
Fax: (81) 45-664-6516
Email: yokohama@cornes.co.jp

NEW ADDRESS

A/S Navicharts
Industriveien 28
P.O. Box 31
1483 Skytta, Norway
Tel: (47) 67 06 11 50
Fax: (47) 67 06 00 15
Email: navicharts@online.no

Chase, Leavitt & Company Ltd.
10 Dana Street
Portland, ME 04101, U.S.A.
Tel: (207) 772-3751 1-800-638-8906
Fax: (207) 772-0297
Telex: 950027

Cornes & Co. Ltd.
Maritime Business Division
273 Yamashita-cho, Naka-Ku
Tel: (81) 45-650-1380
Fax: (81) 45-664-6516
Email: chart@ykh.cornes.co.jp

Mains'L Marine
 Box 1169, Main Highway
 Manuels, Newfoundland
 A1W 1N6
 Tel: (709) 781-0228
 Fax: (709) 781-1021

Mains'L Marine
 Box 1169, Main Highway
 Manuels, Newfoundland
 A1W 1N6
 Tel: (709) 834-6246
 Fax: (709) 834-6247

Nanaimo Maps & Charts
 8 Church Street
 Nanaimo, B.C.
 V9R 5H4
 Tel: (604) 754-2513, 1-800-665-2513
 Fax: (604) 754-2313, (800) 553-2313

Nanaimo Maps & Charts
 8 Church Street
 Nanaimo, B.C.
 V9R 5H4
 Tel: (604) 754-2513, 1-800-665-2513
 Fax: (604) 754-2313, (800) 553-2313
 Email nanmaps@island.net
 Web www.island.net/~nanmaps/nmac.html

Entreprises Shippagan Ltée
 262 boul. J.D. Gauthier
 B.P. 250
 Shippagan, New Brunswick
 E0B 2P0
 Tel: (506) 336-2213
 Fax: (506) 336-8777

Entreprises Shippagan Ltée
 262 boul. J.D. Gauthier
 Shippagan, New Brunswick
 E8S 1R1
 Tel: (506) 336-2213
 Fax: (506) 336-8777

Librairie A à Z Inc.
 57 Place Lasalle
 Baie-Comeau (Québec)
 G4Z 1J8
 Tel: (418) 296-9334
 Fax: (418) 296-2559

Librairie A à Z Inc.
 79 Place Lasalle
 Baie-Comeau (Québec)
 G4Z 1J8
 Tel: (418) 296-9334
 Fax: (418) 296-2559
 Courriel: libaz@globetrotter.net

Bay Port Marina
 Fifth Street
 Box 644
 Midland, Ontario
 L4R 4P4
 Tel: (705) 527-7678
 Fax: (705) 527-4190

Bay Port Marina
 165 Marina Park Avenue
 P.O. Box 644
 Midland, Ontario
 L4R 4P4
 Tel: (705) 527-7678
 Fax: (705) 527-4190
 Email: bayport@bconnex.net

3 - THE FOLLOWING ARE NO LONGER AUTHORIZED CHS CHART DEALERS

Canada Map Company
 63 Adelaide Street East
 Toronto, Ontario
 M5C 1K6

Cartographie Chasse et Pêche Enr.
 25 Levasseur ouest
 Alma, Québec
 G8B 2C5

Chiott Marine
P.O. Box 65176
Burlington, VT 05406
U.S.A.

Cole Stationery & Office Services
52-C Marr Road
Rothesay (Fairvale), New Brunswick
E2E 3K6

Lake Superior Magazine
P.O. Box 16417
Duluth, MN 55816-0417
U.S.A.

L'Hypermarché du Plaisancier
605, boul. Charest est
Québec (Québec)
G1K 3J5

Peter Ayling & Associates
P.O. Box 201, Mill Street
Merrickville, Ontario
K0G 1N0

Richardsons' Marine Publishing
1100 West Cermak Road
Chicago, IL 60608
U.S.A.

Tempest Books
470 Thorn Ridge Crescent
Amherstburg, Ontario, N9V 3X4

(AMA8035-10-35)

(DFO-H99-087)

***1136 NEWFOUNDLAND, SOUTHEAST COAST - BONA VISTA BAY - INDIAN ARM**
- Chart amendments.

Chart (Last correction) - 4855(NAD 83)(1,2)(727/99)

- | | | | |
|---------------|---------------------|------|---------------------------|
| 1. Reposition | green spar buoy JS1 | from | 48°27'19" N 53°33'06".8 W |
| | | to | 48 27 07 N 53 33 00 W |
| 2. Reposition | red spar buoy JS2 | from | 48 27 16.9 N 53 33 09.5 W |
| | | to | 48 27 15 N 53 33 09 W |

NOTE: Digital data products 4855R/M and 76338(4855) may also be affected. Contact Nautical Data International Inc. (NDI) or your local Value Added Remarketers (VAR) for updates.

(AMA8035-10-5-2)

(DFO-A99-048)

***1106 GULF OF ST. LAWRENCE - BRADOR BAY - Buoy.**

Chart (Last correction) - 4470(1)(548/99)

- | | | |
|--------|------|------------------------------|
| 1. Add | BELL | 51°25'32".4 N 57° 15'34".3 W |
|--------|------|------------------------------|

NOTE: Digital data products 4470R/M may also be affected. Contact Nautical Data International Inc. (NDI) or your local Value Added Remarketers (VAR) for updates.

(AMA8035-10-5-9)

(CCG-L99-046)(DFO-Q99-053)

***1138(P) LABRADOR COAST - TURNAVIK ISLANDS TO WHITE BEAR ISLAND**
- Overlay.

Chart (Which will be affected) - 5046(1)

- | | | |
|--------|---------|-------------------------|
| 1. Add | Overlay | 55°20'00" N 59°15'00" W |
|--------|---------|-------------------------|

Mariners are advised that a new route has been surveyed from Turnavik Islands to White Bear Island.

The Canadian Hydrographic Service will provide anylar overlay depicting these changes. This overlay must be used in conjunction with chart 5046 - CapøMakkovik to Winsor Harbour Island.

Interested parties may obtain a copy of the overlay by contacting:

Canadian Hydrographic Service
 Scotia-Fundy Region
 Bedford Institute of Oceanography
 P.O. Box 1006
 Dartmouth, N.S.
 B2Y 4A2
 Tel: 902-426-5051
 Fax: 902-426-1893

NOTE: A new edition of chart 5046 will be made available at a later date.

(AMA8035-10-35)

(DFO-A99-049)

***1137 NOVA SCOTIA, SOUTHEAST COAST - SABLE ISLAND - Radiobeacon.**

Charts (Last correction) - LC 4098(1)(550/99) - LC 4099(1)(550/99) - LC 8007(NAD 27)(2)(723/99)
 LC 4013(NAD 27)(2)(943/99) - LC 4045(NAD 27)(2)(550/99) - LC 4003(NAD 27)(2)(1130/99)
 LC 4006(NAD 27)(2)(1130/99) - 4000(2)(1130/99)

Reference: Notice 529(P)/95 cancelled.

- | | | |
|-----------|-------------|----------------------------------|
| 1. Delete | Radiobeacon | 43°55'51" N 60°01'25" W (approx) |
| 2. Delete | radiobeacon | 43 55 54.8 N 60 01 25 W (approx) |

NOTE: Digital data products 4003R/M, 4013R/M, 4045R/M, 4098R/M, 4099R/M, 8007R/M, 76031(4006), 76090(4045), 76137(4099), 76140(4003), 76204(4013), 76289(4098) and 76345(4000) may also be affected. Contact Nautical Data International Inc. (NDI) or your local Value Added Remarketers (VAR) for updates.

(AMA8035-10-7-7)

(CCG-F98-192)(DFO-A99-024)

***1127 LABRADOR COAST - NAIN, SANDY ISLAND AND CROWN ISLAND - Light and buoys.**

Charts (Last correction) - 5052(NAD 83)(1-5)(929/99) - LC 8047(6)(901/99) - 4730(7)(901/99) - 5049(NAD 83)(5)(508/99)

- | | | |
|--------|--|---------------------------|
| 1. Add | green lighted can buoy, FI G, marked NP5 | 56°27'08" N 61°34'09".8 W |
| 2. Add | red lighted conical buoy, FI R, marked NP4 | 56 26 58.1 N 61 33 24.3 W |
| 3. Add | red light buoy, Q R, marked NA6 | 56 23 04.7 N 61 07 05.1 W |
| 4. Add | green lighted spar buoy, FI G, marked NJ3 | 56 28 27.1 N 61 39 07.4 W |
| 5. Add | light FI R 4s 31m | 56 16 55.5 N 60 56 47.5 W |
| 6. Add | light FI R 4s 31 m | 56 17 15 N 60 54 55 W |
| 7. Add | light FI R 4s 102ft | 56 17 15 N 60 54 55 W |

(AMA8035-10-5-2; 7-2)

(CCG-N97-097,098, N98-327,329-331,344))(DFO-A99-025)

***1105 GULF OF ST. LAWRENCE - ÎLES DE LA MADELEINE - Marine farm.**

Chart (Last correction) - LC 4951(NAD 83)(1)(719/99)

- | | | |
|--------|-------------|------------------------------------|
| 1. Add | marine farm | 47°26' 07" N 61°49'41" W (approx.) |
|--------|-------------|------------------------------------|

NOTE: Digital data products 4951R/M and 79092(4951) may also be affected. Contact Nautical Data International Inc. (NDI) or your local Value Added Remarketers (VAR) for updates.

(AMA8035-10-35)

(DFO-Q99-054)(CCG-L99-019)

***1135 GULF OF ST. LAWRENCE - ÎLES DE LA MADELEINE - HAVRE AUBERT
- Wreck.**

Chart (Which was temporarily affected) - 4957(NAD 83)

Reference: Notice 818(T)/94 cancelled.

NOTE: Digital data products 4957R/M may also be affected. Contact Nautical Data International Inc. (NDI) or your local Value Added Remarketers (VAR) for updates.

(AMA8035-10-35)

(DFO-Q99-060)

***1117 GULF OF ST. LAWRENCE - ÎLES DE LA MADELEINE - Buoys and
marine farm.**

Charts (Last correction) - LC 4951(NAD 83)(1-5)(1105/99) - LC 4451(NAD 27)(6-10)(719/99)

1. Add	marine farm	joining	47°22'17".2 N 61°34'33".4 W
			47 22 17.2 N 61 33 15.4 W
			47 21 36.2 N 61 33 15.4 W
			47 21 36.2 N 61 34 33.4 W
		and	47 22 17.2 N 61 34 33.4 W
2. Add	yellow cautionary buoy markedPriv		47 22 17.2 N 61 34 33.4 W
3. Add	yellow cautionary buoy markedPriv		47 22 17.2 N 61 33 15.4 W
4. Add	yellow cautionary buoy markedPriv		47 21 36.2 N 61 33 15.4 W
5. Add	yellow cautionary buoy markedPriv		47 21 36.2 N 61 34 33.4 W
6. Add	a marine farm	joining	47 22 17 N 61 34 36 W
			47 22 17 N 61 33 18 W
			47 21 36 N 61 33 18 W
			47 21 36 N 61 34 36 W
		and	47 22 17 N 61 34 36 W
7. Add	yellow cautionary buoy markedPriv		47 22 17 N 61 34 36 W
8. Add	yellow cautionary buoy markedPriv		47 22 17 N 61 33 18 W
9. Add	yellow cautionary buoy markedPriv		47 21 36 N 61 33 18 W
10. Add	yellow cautionary buoy markedPriv		47 21 36 N 61 34 36 W

NOTE: Digital data products 4451R/M, 4951R/M, 79083(4451) and 79092(4951) may also be affected. Contact Nautical Data International Inc. (NDI) or your local Value Added Remarketers (VAR) for updates.

(AMA8035-10-5-9; 10-20)

(CCG-L98-115)(DFO-Q99-056)

***1124 NOVA SCOTIA - CAPE GEORGE - BALLANTYNES COVE - Lights and chart amendment.**

Charts (Last correction) - LC 4404(NAD 27)(1,2)(1115/99) - LC 4404(Inset Ballantynes Cove Wharf)(NAD 27) (1,2,4)(1115/99) - LC 4462(1,3)(348/97)

- | | | |
|-----------|----------------|-----------------------------------|
| 1. Delete | sector light | 45°51'29".9 N 61°55'09" W |
| 2. Add | light Fl R 12s | 45 51 29.9 N 61 55 09 W (approx.) |
| 3. Add | light Fl R 12s | 45 51 27 N 61 55 06 W (approx.) |
| 4. Amend | legend | |

Wharf light: Lat. 45°51'30".4 N
61°55'06".4 W (Approx) to read
Wharf light: Lat. 45°51'29".9 N
61°55'09" W

NOTE: Digital data products 4404R/M, 4462R/M, 76155(4404), 76156(4404) and 76242(4462) may also be affected. Contact Nautical Data International Inc. (NDI) or your local Value Added Remarketers (VAR) for updates.

(AMA8035-10-7-6)

(CCG-G99-014,015)(DFO-A99-043)

***1118 PRINCE EDWARD ISLAND - NORTH LAKE - Light.**

Chart (Last correction) - LC 4023(NAD 27)(1)(503/99)

- | | | |
|----------|---------------------------------------|-----------------------------|
| 1. Amend | 2 Lts Q & Iso to read 2 Lts QG & IsoG | 46° 28 06.7 N 62°04'07".6 W |
|----------|---------------------------------------|-----------------------------|

NOTE: Digital data products 4023R/M and 76286(4023) may also be affected. Contact Nautical Data International Inc. (NDI) or your local Value Added Remarketers (VAR) for updates.

(AMA8035-10-7-6)

(CCG-G98-045,046)(DFO-A99-002)

***1115 PRINCE EDWARD ISLAND, SOUTH SIDE - WOOD ISLANDS - Range lights.**

Charts (Last correction) - 4483(Inset, Wood Islands Ferry Terminal/Terminal d Traversier)
(NAD 27)(1,2)(1916/98) - LC 4404(NAD 27)(3,4)(321/99)

- | | | |
|----------|--|---------------------------|
| 1. Amend | Front range light -
Q G 23ft to read F Y 24ft | 45°56'54".3 N 62°45'07" W |
| 2. Amend | Rear range light -
Iso G 4s 37ft to read F Y 37ft | 45 56 59.5 N 62 45 06.7 W |
| 3. Amend | Front range light -
Q G to read F Y | 45 56 54 N 62 45 06 W |
| 4. Amend | Rear range light -
Iso G to read F Y | 45 57 00 N 62 45 06 W |

NOTE: Digital data products 4404R/M, 4483R/M and 76155(4404) may also be affected. Contact Nautical Data International Inc. (NDI) or your local Value Added Remarketers (VAR) for updates.

(AMA8035-10-7-6)

(DFO-A98-115)(CCG-G97-131,132)

***1128 NOVA SCOTIA, SOUTHEAST COAST - HALIFAX HARBOUR - NORTHWEST ARM - Buoy.**

Chart (Last correction) - 4202(Int. 4633)(NAD 83)(1)(1121/99)

Reference: Notice 1105(P)/98 cancelled.

1. Delete red light buoy HQ12 44°38'15".7 N 63°36'38".6 W

NOTE: Digital data products 4202R/M and 76003(4202) may also be affected. Contact Nautical Data International Inc. (NDI) or your local Value Added Remarketers (VAR) for updates.

(AMA8035-10-5-7)

(CCG-F98-138)(DFO-A99-023)

***1121 NOVA SCOTIA, SOUTHEAST COAST - BEDFORD BASIN - Buoys and shoal.**

Charts (Last correction) - 4201(Int. 4634)(NAD 83)(1-3)(273/96) - 4202(Int. 4633)(NAD 83)(1,3)(330/98)

1. Reposition green light buoy H39 from 44°40'37".3 N 63°37'03".1 W
to 44 40 37.6 N 63 37 14 W

2. Delete yellow light buoy HNCC 44 41 03.3 N 63 37 49.6 W

3. Add 9 metres 7 decimetres 44 40 34.1 N 63 37 14.5 W

NOTE: Digital data products 4201R/M, 4202R/M, 76001(4201) and 76003(4202) may also be affected. Contact Nautical Data International Inc. (NDI) or your local Value Added Remarketers (VAR) for updates.

(AMA8035-10-5-7)

(CCG-F98-065, 172)(DFO-A98-137)

***1126 NOVA SCOTIA, SOUTHEAST COAST - LAHAVE BANK - Buoy.**

Charts (Last correction) - LC 8006(NAD 27)(1)(717/99) - LC 4003(NAD 27)(1)(928/99) - LC 4001 (Int. 404)(NAD 83)(1)(761/99) - LC 4006(NAD 27)(1)(550/99) - 4000(2)(550/99)

1. Reposition ODAS buoy from 42°30'00" N 64°12'00" W
to 42 29 48 N 64 01 00 W

2. Add yellow lighted ODAS buoy, FI (5) Y, 42 29 48 N 64 01 00 W
ODAS/SADO, marked 44142

NOTE: Digital data products 4003R/M, 8006R/M, 76030(4001), 76031(4006), 76140(4003) and 76345(4000) may also be affected. Contact Nautical Data International Inc. (NDI) or your local

Value Added Remarketers (VAR) for updates.

(AMA8035-10-5-7)

(CCG-F99-011)(DFO-A99-045)

***1131 NOVA SCOTIA, SOUTHEAST COAST - LAHAVE ISLANDS TO ST. MARGARETS BAY - Buoys.**

Charts (Last correction) - 4381(NAD 27)(1)(908/99) - LC 4012(NAD 27)(3)(1129/99) - 4211(NAD 27)(3,6)(736/99) - 4384(NAD 27)(3,6)(908/99) - 4386(NAD 27)(2)(908/99) - LC 4320(NAD 83)(4,5)(921/99)

- | | | | |
|---------------|--|------|---------------------------|
| 1. Add | BELL against light buoy MC55 | | 44°27'12" N 64°12'39" W |
| 2. Reposition | light buoy AT | from | 44 27 24 N 63 52 00 W |
| | | to | 44 26 42.2 N 63 53 35.8 W |
| 3. Add | east cardinal light and whistle buoy, Q(3) 10s, WHIS, marked T | | 44 09 38 N 64 18 46 W |
| 4. Reposition | light buoy AT | from | 44 27 24.3 N 63 51 57.6 W |
| | | to | 44 26 42.5 N 63 53 33.4 W |
| 5. Add | east cardinal light and whistle buoy, Q(3) 10s, WHIS, marked T | | 44 09 38.3 N 64 18 43.6 W |
| 6. Replace | light buoy TS53 with a green spar buoy, marked TS53 | | 44 11 08 N 64 25 27 W |

NOTE: Digital data products 4012R/M, 4211R/M, 4320R/M, 4381R/M, 4384R/M, 4386R/M, 76055(4320), 76195(4386), 76198(4012) and 76199(4381) may also be affected. Contact Nautical Data International Inc. (NDI) or your local Value Added Remarketers (VAR) for updates.

(AMA8035-10-5-7)

(CCG-F98-144,146,152,177)(DFO-A99-009)

***1122(P) GULF OF ST. LAWRENCE - ÎLE D'ANTICOSTI - PORT MENIER - Shoal depths.**

Chart (Which will be affected) - 4430(Plan,Baie Ellis)(NAD 27)(1-3)

- | | | | |
|------------|--|--|-----------------------------|
| 1. Add | 2 fathoms | | 49°48'18".8 N 64°21'55".4 W |
| 2. Replace | 3 fathoms 1 foot with 2 fathoms 4 feet | | 49 47 56.5 N 64 21 39 W |
| 3. Replace | 2 fathoms 2 feet with 1 fathom 4 feet | | 49 48 35.7 N 64 21 57 W |

NOTE: (1) A chart amendment patch showing the above changes will be available at a later date.
(2) Digital data products 4430R/M may also be affected. Contact Nautical Data International Inc. (NDI) or your local Value Added Remarketers (VAR) for updates.

(AMA8035-10-35)

(DFO-Q99-059)

***1132 BAY OF FUNDY - PORT GREVILLE AND PORT GEORGE - Lights.**

Chart (Last correction) - LC 4010(NAD 27)(1,2)(757/99)

Reference: Notice 1551(P)98 cancelled.

- | | | | |
|-----------|-------|--|---------------------------|
| 1. Delete | light | | 45°24'29" N 64°32'57".5 W |
| 2. Delete | light | | 45 00 14 N 65 09 14 W |

NOTE: Digital data products 4010R/M may also be affected. Contact Nautical Data International Inc. (NDI) or your local Value Added Remarketers (VAR) for updates.

(AMA8035-10-7-7)

(CCG-F99-004,005)(DFO-A99-032)

***1108(P) GULF OF ST. LAWRENCE - CHALEUR BAY - CHANDLER - Light, daybeacon, breakwater and pontoon.**

Chart (Which will be affected) - 4921(Plan, Chandler)(NAD 83)(1-5)

- | | | | |
|--------|--------------------------|---------|---------------------------------|
| 1. Add | light Fl Y, marked Priv | | 48°20'37".9 N 64°40'09" W |
| 2. Add | starboard daybeacon Priv | | 48 20 40.7 N 64 40 13.4 W |
| 3. Add | breakwater | joining | 48 20 40.6 N 64 40 10.1 W |
| | | and | 48 20 40.6 N 64 40 13.2 W |
| | | | 48 20 41.4 N 64 40 14.4 W |
| 4. Add | legend Bkw | | 48 20 40 N 64 40 13 W (approx.) |
| 5. Add | a pontoon | joining | 48 20 42.3 N 64 40 10 W |
| | | and | 48 20 42.3 N 64 40 13.2 W |

NOTE: (1) A chart amendment patch showing the above changes will be available at a later date.

(2) Digital data products 4921R/M and 79071(4921) may also be affected. Contact Nautical Data International Inc. (NDI) or your local Value Added Remarketers (VAR) for updates.

(AMA8035-10-7-9)

(CCG-L98-144,147,148, L99-037)(DFO-Q99-006)

***1133 NOVA SCOTIA, SOUTHEAST COAST - GREEN HARBOUR - HUNTS LANDING AND SHINGLE POINT - Buoys and light.**

Charts (Last correction) - LC 4240(NAD 83)(1-3)(915/99) - LC 4241(NAD 83)(3)(1318/98)

- | | | | |
|---------------|-----------------|------|-----------------------------|
| 1. Amend | F G to read F R | | 43°57'04".9 N 64°46'08".1 W |
| 2. Reposition | light buoy UX55 | from | 43 48 36 N 64 55 33 W |
| | | to | 43 48 42.5 N 64 55 33 W |
| 3. Delete | light buoy KP | | 43 40 14.6 N 65 09 33 W |

NOTE: Digital data products 4240R/M, 4241R/M, 76045(4240) and 76047(4241) may also be affected. Contact Nautical Data International Inc. (NDI) or your local Value Added Remarketers (VAR) for updates.

updates.

(AMA8035-10-7-7)

(CCG-F98-139,140,148)(DFO-A99-022)

***1139 NOVA SCOTIA, SOUTH COAST - SHELBURNE HARBOUR - GUNNING COVE
- Buoy.**

Charts (Last correction) - 4209(Plan, Shelburne Harbour)(NAD 83)(1,2)(915/99) - LC 4241
(NAD 83)(1,2)(1133/99)

- | | | |
|-----------|------------------------------------|-----------------------------|
| 1. Delete | green light buoy SA51 | 43°41'00".1 N 65°20'01".8 W |
| 2. Add | green light buoy FI G, marked SA51 | 43 41 01.5 N 65 20 18 W |

NOTE: Digital data products 4209R/M, 4241R/M, 76039(4209) and 76047(4241) may also be affected. Contact Nautical Data International Inc. (NDI) or your local Value Added Remarketers (VAR) for updates.

(AMA8035-10-5-7)

(CCG-F98-194)(DFO-A99-028)

***1134 NOVA SCOTIA, SOUTH COAST - WOODS HARBOUR - BIG LEDGE -
Light.**

Charts (Last correction) - 4210(NAD 83)(1)(661/96) - LC 4242(NAD 83)(1)(1306/98) - LC 4230
(NAD 83)(1)(1129/99)

- | | | |
|----------|--------------|---------------------------|
| 1. Amend | F to read FI | 43°31'10".5 N 65°44'43" W |
|----------|--------------|---------------------------|

NOTE: Digital data products 4210R/M, 4230R/M, 4242R/M, 76014(4242), 76043(4210) and 76044(4230) may also be affected. Contact Nautical Data International Inc. (NDI) or your local Value Added Remarketers (VAR) for updates.

(AMA8035-10-7-7)

(CCG-F98-174)(DFO-A99-029)

***1123 NOVA SCOTIA, SOUTHWEST COAST - INDIAN SLUICE - GREEN ISLAND
AND BIG TUSKET ISLAND - Lights.**

Charts (Last correction) - 4244(NAD 27)(3-5)(962/98) - LC 4243(NAD 27)(1)(950/99) - LC 4230
(NAD 83)(2)(928/99)

- | | | |
|----------|---|-----------------------------|
| 1. Amend | FI 10s 25m 12M to read FI 5s 25m
12M | 43°41'22".8 N 66°08'40".3 W |
| 2. Amend | FI 10s 25m 12M to read FI 5s 25m
12M | 43 41 23 N 66 08 37 W |
| 3. Add | light FI R | 43 38 13.3 N 66 01 24.9 W |
| 4. Add | light FI R | 43 46 20.9 N 65 57 04.5 W |
| 5. Add | green spar buoy, marked TE1 | 43 44 11.5 N 65 56 39.5 W |

NOTE: Digital data products 4230R/M, 4243R/M, 4244R/M, 76018(4243), 76044(4230) and 76048(4244) may also be affected. Contact Nautical Data International Inc. (NDI) or your local Value Added Remarketers (VAR) for updates.

(AMA8035-10-7-7)

(CCG-F98-067,080,175,195)(DFO-A98-126)

***1116 BAY OF FUNDY - DIGBY NECK - PETIT PASSAGE - BOARS HEAD - Light.**

Charts (Last correction) - LC 4011(NAD 83)(1)(934/99) - LC 4012(NAD 27)(1)(928/99)

1. Amend FI 12s 60ft 12M to read FI 5s 60ft 12M 44°24'12" N 66°13'06" W

NOTE: Digital data products 4011R/M, 4012R/M, 76019(4011) and 76198(4012) may also be affected. Contact Nautical Data International Inc. (NDI) or your local Value Added Remarketers (VAR) for updates.

(AMA8035-10-7-7)

(CCG-F98-173)(DFO-A99-001)

***1129 NOVA SCOTIA, SOUTHWEST COAST - TRINITY LEDGE - Wreck.**

Charts (Last correction) - LC 4230(NAD 83)(2)(1123/99) - LC 4243(NAD 27)(1)(1123/99)
LC 4011(NAD 83)(1)(1116/99) - LC 4012(NAD 27)(1)(1116/99)

1. Add dangerous wreck, depth unknown 43°57'42" N 66°19'00" W

2. Add dangerous wreck, depth unknown 43 57 42.4 N 66 18 57.1 W

NOTE: Digital data products 4011R/M, 4012R/M, 4230R/M, 4243R/M, 76018(4243), 76019(4011), 76044(4230) and 76198(4012) may also be affected. Contact Nautical Data International Inc. (NDI) or your local Value Added Remarketers (VAR) for updates.

(AMA8035-10-35)

(DFO-A99-012)

***1125 NEW BRUNSWICK - PASSAMAQUODDY BAY - ST. ANDREWS - TONGUE SHOAL - Radar reflector.**

Chart (Last correction) - 4332(1)(195/94)

1. Add radar reflector 45°03'44".8 N 67°00'47".8 W

(AMA8035-10-23)

(CCG-F98-214)(DFO-A99-019)

1130 UNITED STATES, EAST COAST - NANTUCKET SHOAL - Buoys.

Charts (Last correction) - LC 8005(NAD 27)(1-3)(715/99) - LC 4003(NAD 27)(1-3)(1126/99)
LC 4001(Int. 404)(NAD 83)(1,3)(1126/99) - LC 4006(NAD 27)(1,3)(1126/99) - 4000(1,3)(1126/99)

1. Delete super-buoy LANBY N 40°30'00" N 69°26'00" W

2. Add fairway light buoy RW, FogSig, 40 30 00 N 69 25 30 W

3. Add Mo(A) Racon, marked N
super-buoy ODAS/SADO Y,
Fl(4) Y 20s, marked 44008 40 30 00 N 69 25 00 W

NOTE: Digital data products 4003R/M, 8005R/M, 76030(4001), 76031(4006), 76140(4003) and 76345(4000) may also be affected. Contact Nautical Data International Inc. (NDI) or your local Value Added Remarketers (VAR) for updates.

(AMA8035-10-2)

(US-W97-037)

***1119(T) ST. LAWRENCE RIVER - RIVIÈRE-DU-LOUP - Shoal depth.**

Chart (Temporarily affected) - LC 1234(Inset, Pointe de la Rivière du Loup)(NAD 83)(1)

1. Add 4 metres 7 decimetres 47°50'52".5 N 69°34'15".6 W

NOTE: (1) Additional information will be made available at a later date.
(2) Digital data products 1234R/M and 79031(1234) may also be affected. Contact Nautical Data International Inc. (NDI) or your local Value Added Remarketers (VAR) for updates.

(AMA8035-10-35)

(DFO-Q99-058)

***1104 ST. LAWRENCE RIVER - POINTE-AU-PIC - Shoal depths.**

Chart (Last correction) - LC 1234(Inset, La Malbaie - Pointe-au-Pic)(NAD 83)(1-7)(729/99)

1. Replace 1 metre 2 decimetres with drying
height of 0 metres 47°37'25".3 N 70°08'24".3 W

2. Replace 2 metres 5 decimetres with 2
metres 47 37 24.2 N 70 08 25.9 W
1 decimetre

3. Replace 1 metre 5 decimetres with 0 metre
5 decimetres 47 37 26.2 N 70 08 21.7 W

4. Replace 3 metres 3 decimetres with 2
metres 47 37 23.4 N 70 08 25.7 W
5 decimetres

5. Add 1 metre 4 decimetres 47 37 24.9 N 70 08 21.9 W

6. Add 1 metre 5 decimetres 47 37 23.4 N 70 08 26.9 W

7. Delete 1 metre 6 decimetres 47 37 25.5 N 70 08 22.2 W

NOTE: Digital data products 1234R/M and 79032(1234) may also be affected. Contact Nautical Data International Inc. (NDI) or your local Value Added Remarketers (VAR) for updates.

(AMA8035-10-35)

(DFO-Q99-051)

***1120(P) ST. LAWRENCE RIVER - SAINT-JEAN-PORT-JOLI - Shoal depths and breakwater.**

Chart (Which will be affected) - 1233(Inset, Saint-Jean-PortJoli)(NAD 27)(1-11)

1. Add	drying height of 0 metres 9 decimetres		299°30' 129 metres (423 feet) from Joli's triangulation point (47°12'54".99 N 70°16'24".48 W)
2. Delete	0 metres 6 decimetres		300°30' 160 metres (526 feet) from Joli's triangulation point
3. Add	drying height of 0 metres		299° 173 metres (567 feet) from Joli's triangulation point
4. Replace	0 metres 2 decimetres with a drying height of 1 metre 2 decimetres		296° 105 metres (345 feet) from Joli's triangulation point
5. Replace	0 metres 8 decimetres with 0 metres 4 decimetres		310° 153 metres (502 feet) from Joli's triangulation point
6. Replace	0 metres 2 decimetres with a drying height of 0 metres 1 decimetre		316°30' 98 metres (323 feet) from Joli's triangulation point
7. Replace	1 metre with 0 metres 5 decimetres		243° 264 metres (867 feet) from Joli's triangulation point
8. Add	0 metres 8 decimetres		327°30' 411 metres (1348 feet) from Joli's triangulation point
9. Add	breakwater	joining	172°30' 160 metres (524 feet) from Joli's triangulation point 248° 146 metres (478 feet) from Joli's triangulation point 292°30' 194 metres (637 feet) from Joli's triangulation point 304°30' 213 metres (700 feet) from Joli's triangulation point 302° 233 metres (763 feet) from Joli's triangulation point 289°30' 215 metres (704 feet) from Joli's triangulation point 245° 169 metres (554 feet) from Joli's triangulation point
		and	173°30' 182 metres (597 feet) from Joli's triangulation point
10. Delete	0 metres 2 decimetres		271° 162 metres (532 feet) from Joli's triangulation point
11. Reposition	legend RCy	from to	299°30' 211 metres (692 feet) 297° 245 metres (804 feet) from Joli's triangulation point

- NOTE: (1) A new edition incorporating the above-mentioned changes will be available at a later date.
(2) Digital data products 1233R/M and 79024(1233) may also be affected. Contact Nautical Data International Inc. (NDI) or your local Value Added Remarketers (VAR) for updates.

***1101(P) QUÉBEC - LAKE MEMPHREMAGOG - SUNKEN ISLAND - Shoal depth.**

Chart (Which will be affected) - 1361(Compartment B-C)(1)

1. Replace 10 feet to 1 foot 45°02'51" N 72°16'42" W

NOTE: Additional information will be made available at a later date.

(AMA8035-10-35)

(DFO-Q99-052)

***1141(P) ST. LAWRENCE RIVER - PORT DE SOREL - Shoal depths.**

Charts (Which will be affected) - 1350(Sheet 1)(Inset,Sorel)(NAD 27)(3,4) - 1312(Inset, Port de Sorel)(NAD 83)(1,2)

Referre: Notice 732/99.

1. Replace 7 metres 9 decimetres with 8 metres 4 decimetres 46°02'47".8 N 73°07'14".4 W

2. Add 8 metres 7 decimetres 46 02 50.5 N 73 07 14.7 W

3. Replace 7 metres 9 decimetres with 8 metres 4 decimetres 46 02 47.7 N 73 07 15.9 W

4. Add 8 metres 7 decimetres 46 02 50.4 N 73 07 16.2 W

NOTE: (1) Additional information will be made available at a later date.
 (2) Digital data products 1312R/M, 1350R/M and 79130(1312) may also be affected. Contact Nautical Data International Inc. (NDI) or your local Value Added Remarketers (VAR) for updates.

(AMA8035-10-35)

(DFO-Q99-061)

***1114 QUÉBEC - OTTAWA RIVER - HAWKESBURY - Buoy.**

Chart - 1514(Compartment A-B)(Carillon à/toPapineauville)(NAD 83)(1)

1. Reposition red light buoy HK4 from 45°37'00".4 N 74°36'08".9 W
to 45 37 00.2 N 74 36 05.6 W

NOTE: Digital data products 1514R/M may also be affected. Contact Nautical Data International Inc. (NDI) or your local Value Added Remarketers (VAR) for updates.

(AMA8035-10-5-9)

(CCG-L99-015)

***1100 QUÉBEC - OTTAWA RIVER - HULL - Buoys.**

Chart - 1515(Compartment B-C)Becketts Creek à/to Ottawa)(NAD 83)(1-4)

1. Add	private lighted information pillar buoy WOr FI Y	45°27'19".2 N 75°41'28".8 W
2. Add	private lighted information pillar buoy WOr FI Y	45 27 23.2 N 75 42 02.8 W
3. Add	private lighted information pillar buoy WOr FI Y	45 26 12.2 N 75 42 11.8 W
4. Add	private lighted information pillar buoy WOr FI Y	45 27 25.2 N 75 42 56.8 W

NOTE: Digital data products 1515R/M may also be affected. Contact Nautical Data International Inc. (NDI) or your local Value Added Remarketers (VAR) for updates.

(AMA8035-10-5-9)

(CCG-L99-038-041)(DFO-Q99-050)

***1113 LAKE HURON - GEORGIAN BAY - WHALESBACK CHANNEL - Buoy.**

Charts (Last correction) - 2289(1)(571/99) - 2239(NAD 27)(2)(535/99) - 2202(Sheet 1)(Continuation A) Port Severn to/à Penetang Harbour)(NAD 27)(3)

1. Add	green spar buoy, marked MA3	44°54'37" N 79°54'36" W
2. Add	green spar buoy, marked MA3	44 54 40.8 N 79 54 34.8 W
3. Add	green spar buoy, marked MA3	337° 5600 ft from Minnicognashene Island front range light (44°54'40".8 N 79°54'34".8 W)

NOTE: Digital data products 2202R/M, 2239R/M, 73046(2239) and 73047(2289) may also be affected. Contact Nautical Data International Inc. (NDI) or your local Value Added Remarketers (VAR) for updates.

(AMA8035-10-5-13)

(CCG-D99-009)(DFO-C99-068)

***1112 LAKE HURON - GEORGIAN BAY - SANS SOUCI ISLAND - ISLE OF BUTE - Results of survey.**

Charts (Last correction) - LC 2284(NAD 27)(2,3)(2101/98) - 2202(Sheet 3)(Twelve Mile Bay to/à Rose Island)(NAD 27)(1)

1. Add	4 feet	45°10'52".5 N 80°07'16".1 W
2. Delete	8 feet	45 10 55 N 80 07 15 W
3. Add	4 feet	45 10 52.3 N 80 07 15.9 W

NOTE: Digital data products 2202R/M, 2284R/M and 73051(2284) may also be affected. Contact Nautical Data International Inc. (NDI) or your local Value Added Remarketers (VAR) for updates.

(AMA8035-10-35)

(DFO-C99-071)

***1109 LAKE HURON - SARNIA TO BAYFIELD - BRIGHTS GROVE - Vertical clearance.**

Chart - 2260(NAD 83)(1)

1. Amend	21m to read 28m	43°01'59" N 82°15'08" W
----------	-----------------	-------------------------

NOTE: Digital data products 2260R/M may also be affected. Contact Nautical Data International Inc. (NDI) or your local Value Added Remarketers (VAR) for updates.

(AMA8035-10-35)

(DFO-C99-073)

***1111 LAKE HURON - ST. JOSEPH CHANNEL - THESSALON HARBOUR - Buoy and light.**

Chart (Last correction) - 2251(NAD 27)(1,2)(107/99) - 2251(Inset,Thessalon Harbour)(NAD 27)(1,2)(107/99)

Reference: Notice 703(T)/92 cancelled.

1. Delete	light	46°15'02".6 N 83°33'08".4 W
2. Add	red lighted pillar buoy FI R, marked KA/2	46 15 02.6 N 83 33 09.3 W

NOTE: Digital data products 2251R/M and 73060(2251) may also be affected. Contact Nautical Data International Inc. (NDI) or your local Value Added Remarketers (VAR) for updates.

(AMA8035-10-5-13)

(CCG-D99-005)(DFO-C99-070)

***1110 NELSON RIVER - PLAYGREEN LAKE - Buoys.**

Chart - 6259(NAD 83)(1-8)

1. Add	red spar buoy, marked P16	53°52'10" N 97°58'58" W
2. Add	red spar buoy, marked P14	53 52 39 N 97 58 47 W
3. Add	red spar buoy, marked P12	53 53 09 N 97 58 44 W
4. Add	red spar buoy, marked PH2	53 48 14 N 97 59 10 W
5. Add	green spar buoy, marked PH3	53 47 54 N 97 59 39 W
6. Add	red spar buoy, marked PH4	53 47 30 N 98 00 29 W
7. Add	red spar buoy, marked PH6	53 47 03 N 98 01 10 W
8. Add	red spar buoy, marked PH8	53 46 34 N 98 02 00 W

(AMA8035-10-5-13)

(CCG-D99-003)(DFO-C99-072)

CORRECTIONS TO RADIO AIDS TO MARINE NAVIGATION

***1143 CANADIAN COAST GUARD PUBLICATION - Amendments to the Radio Aids to Marine Navigaiton (Atlantic and Great Lakes) publication 1999.**

PART 1
FOREWORD

ADVANCE NOTICES

In order that mariners may have advance knowledge of proposed changes to existing facilities to be provided, additions, deletions and changes to such facilities under the jurisdiction of the Department of Fisheries and Oceans are listed hereunder. Effective dates of changes and dates for the commissioning of new facilities are, however, extremely hard to forecast owing to difficulties in obtaining materials and subject to the provision of necessary funds. Every effort will be made to amend dates as far in advance as possible. In every case of changes to facilities and commissioning new facilities, an appropriate Notice to Mariners will be issued.

1) *Global Maritime Distress and Safety System (GMDSS)*

Implementation of VHF/DSC on the Atlantic Coast

The Canadian Coast Guard is planning to install VHF/Digital Selective Calling (DSC) equipment at the Sydney MCTS Centre during the spring of 1999. Further VHF/DSC installations at other MCTS Centres, except for the St. Lawrence River and Great Lakes MCTS Centres, are planned for future years. Canadian Coast Guard MCTS Centres will continue to monitor CH 16 for distress, urgency, safety and calling purposes until at least February 1st, 2005.

Implementation of HF/DSC in the Canadian Arctic

The Canadian Coast Guard, Central and Arctic Region, will implement a High Frequency Digital Selective Calling (HF/DSC) system at the Iqaluit Marine Communications and Traffic Services Centre with a remote receiver site located at Resolute Bay in order to provide continuous HF/DSC alerting, voice communications and narrow-band direct printing broadcasting capabilities on a number of selected frequencies in the 4, 6, 8, 12 and 16 MHz radio bands that will cover the Arctic waters above latitude 70 degrees of latitude north as the final element of the implementation of the Global Maritime Distress and Safety System (GMDSS) in the Canadian Arctic. This system is planned to be operational for July 1st, 2000.

The following type of radio communications mode is the minimum complement of services that can be offered to meet GMDSS Sea Area A-4 guidelines:

Frequency Band	DSC Alerting Frequency	R/T distress/safety traffic frequency	NBDP (broadcast) frequency
HF 4	4207.5 kHz	4125 kHz	4210 kHz
HF 6	6312 kHz	6215 kHz	6314 kHz
HF 8	8414.5 kHz	8291 kHz	8416.5 kHz
HF12	12,577 kHz	12,290 kHz	12,579 kHz
HF16	16,804.5 kHz	16,420 kHz	16,806.5 kHz

2) *The Commercial Public Correspondence Service*

CORRECTIONS TO RADIO AIDS TO MARINE NAVIGATION

The Canadian Coast Guard is proposing to discontinue the provision of the commercial public correspondence service in selected areas, based upon the demand for the service and the availability of alternate service delivery methods. This has been brought about by the advent of cellular telephone services and various satellite options.

The radiotelegraphy (Morse code) service

As a result of the implementation of the IMO Global Maritime Distress and Safety System (GMDSS) on February 1, 1999, which no longer requires vessels to carry radiotelegraph (Morse code) installations, the Canadian Coast Guard has discontinued using this mode of communications and no longer provides this service.

Substitute page 2-37 with the following page.

MCTS St. John's/VON - Broadcasts:

Time UTC:	Frequency:	Contents:
1637	2598J3E	RADIOTELEPHONY: <ul style="list-style-type: none"> - Weather synopsis, forecasts and Sea State forecasts for marine areas 232,233,234,235,236,237,238. - Ice Edge and Conditions East Newfoundland Coast south of Strait of Belle Isle and approaches.
1820	518F1B	NAVTEX (O): <ul style="list-style-type: none"> - Weather (summer) Ice (winter).
2007	2598J3E	RADIOTELEPHONY: <ul style="list-style-type: none"> - Notices to Shipping: Nearshore - Cape Pine to Twillingate Offshore - North Atlantic to Cape Bauld. - Loran C Notices to Shipping for chains 5930 and 7930. - Notices to Shipping revising the position of every reported offshore exploration and exploitation vessel. - Notices to Fishermen (when available).
2207	2598J3E	RADIOTELEPHONY: <ul style="list-style-type: none"> - Weather synopsis, forecasts for marine areas 232,233,234,235,236, 237,238. - Ice Edge and Conditions East Newfoundland Coast south of Strait of Belle Isle and approaches.
2220	518F1B	NAVTEX (O): <ul style="list-style-type: none"> - Weather (winter) Notices to Shipping/Ice (summer).

RADIOTELEPHONY:

- Weather synopsis, forecasts and Sea State forecasts for marine areas Section 113, 234, 235, 236, 237, 238. EDN. # 06/99
- Weather forecast for Conception Bay May 1 - September

CORRECTIONS TO RADIO AIDS TO MARINE NAVIGATION

- Actual weather observations (when available) for the following sites:

- | | | | |
|----|---------------|----|-------------|
| 1) | Pool's Island | 5) | Cape Race |
| 2) | Bonavista | 6) | St. Shott's |
| 3) | Grates Cove | 7) | Argentina |
| 4) | St. John's | | |

Continuou s	Ch21B Ch28B Ch28B Lumsden	<ul style="list-style-type: none"> - Ice Edge and Conditions East Newfoundland Coast south of Strait of Belle Isle and approaches. - Notices to Shipping Cape Pine to Twillingate. - Notices to Shipping revising the position of every reported offshore exploration and exploitation vessel. - Notices to fishermen (when available). - Loran C Notices to Shipping for chains 5930 and 7270. -
----------------	---	---

MCTS St. John's/VON - Traffic Lists:

Times:	Frequency:	RADIOTELEPHONY
0140 UTC then every 4 hours.	2524J3E	<ul style="list-style-type: none"> - Victoria - Cape Bonavista - Lumsden

Substitute page 2-40 with the following page.

MCTS Sydney/VCO - Broadcasts:

Time UTC:	Frequenc y:	Contents:
0040	2749J3E	RADIOTELEPHONY: <ul style="list-style-type: none"> - Weather synopsis and forecasts for marine areas 209,213,214,215,216, 217,218,231 - Sea state forecast for marine areas 209,213,214,215,217,218,231 - <input checked="" type="checkbox"/> Notices to Fishermen (when available)
0240	518F1B	NAVTEX (Q) (English): <ul style="list-style-type: none"> - Notices to Shipping
0255	518F1B	NAVTEX (J) (French): <ul style="list-style-type: none"> - Notices to Shipping
0640	518F1B	NAVTEX (Q) (English): <ul style="list-style-type: none"> - Weather
0655	518F1B	NAVTEX (J) (French): <ul style="list-style-type: none"> - Weather

CORRECTIONS TO RADIO AIDS TO MARINE NAVIGATION

0740	2749J3E	RADIOTELEPHONY: <ul style="list-style-type: none"> - Weather synopsis and forecasts for marine areas 209,213,214,215,216, 217,218,231 - Sea state forecast for marine areas 209,213,214,215,217,218,231 - Notices to Fishermen (when available).
1040	518F1B	NAVTEX (Q) (English): <ul style="list-style-type: none"> - Weather
1055	518F1B	NAVTEX (J) (French): <ul style="list-style-type: none"> - Weather
1440	2749J3E	RADIOTELEPHONY: <ul style="list-style-type: none"> - Weather synopsis and forecasts for marine areas 209,213,214,215,216, 217,218,231 - Sea state forecast for marine areas 209,213,214,215,217,218,231
1440	518F1B	RADIOTELEPHONY: NAVTEX (Q) (English): <ul style="list-style-type: none"> - Notices to Shipping - <input checked="" type="checkbox"/>Weather Notices to Fisherman (when available)
1455	518F1B	NAVTEX (J) (French): <ul style="list-style-type: none"> - Notices to Shipping
1510	518F1B 518F1B	<ul style="list-style-type: none"> <input checked="" type="checkbox"/>Notices to Shipping in areas Cape Breton shore (covering Cabot Strait to Banquereau Bank), Gulf of St. Lawrence, Chaleur-Miscou Bay, Newfoundland South Coast, P.E.I. and Miramichi Bay. - Notices to Shipping revising the position of every reported offshore exploration and exploitation vessel.
Substitute page 3-4 with the following page.		
MCTS Prescott/VBR - Broadcasts:		
Time UTC:	Frequency:	Contents:
0510	518F1B	NAVTEX (H): <ul style="list-style-type: none"> - Weather
0910	518F1B	NAVTEX (H): <ul style="list-style-type: none"> - Weather
1310	518F1B	NAVTEX (H): <ul style="list-style-type: none"> - Notices to Shipping. - Ice (during ice season).
1710	518F1B	NAVTEX (H): <ul style="list-style-type: none"> - Weather
2110	518F1B	NAVTEX (H): <ul style="list-style-type: none"> - Weather

CORRECTIONS TO RADIO AIDS TO MARINE NAVIGATION

RADIOCAID: (English)
 Kingston

MCTS Prescott/VBR - Traffic Lists:		- Fonthill Colliery
Times:	Fréquence	Sites: - Cornwall Gananoque
December 1st to April 1st -	Ch25	RADIOCAID: (French) Kingston - Cornwall Gananoque
December 1st to April 1st -	Ch25	

CORRECTIONS TO RADIO AIDS TO MARINE NAVIGATION

Prescott Marine Communications and Traffic Services Centre Marine Facsimile Package

A Great Lakes Marine weather package is available by fax from Prescott Marine Communications and Traffic Services Centre. Data is provided by the Ontario Weather Centre, for details see Part 5 *Great Lakes including St. Lawrence River to Montreal* section.

Substitute page 5-28 with the following page.

Facsimile package available

The package is available by fax via Prescott MCTS Centre Coast Guard station and consists of:

- marine forecast for the Great Lakes and St. Lawrence River (eastward to Montreal only).
- marine weather warnings
- charts of marine observations issued 4 times a day at: 0200, 0800, 1400, 2000 UTC
- 18 hr prognostic chart issued twice a day at 1:00 a.m. & 1:00 p.m. local
- Ice charts and reports - reference Part 5 *Canadian Ice Services* section

The facsimile package may be polled by calling (613) 925-0666 and operating the POLL function on your facsimile machine. Mariners are cautioned that information may not be the latest issue.

Buoys

In order to complement his observational network, Environment Canada operates a network of buoys around the Great Lakes. This data becomes part of the collection of weather reports sent through LAWEB and is used to improve marine forecasting.

Mariners are requested to use caution when approaching buoys as mooring chains are normally not detectable from a ship and can be damaged or even cut if there is contact, what will make the buoy loose and cause a costly recovery of the platform.

Cdn. buoys	Lake	CENTRE	U.S. buoys	Lake	CENTRE
45132	West Erie	42°28.3N 81°12.9W	45001	Superior	48°00'00"N 87°36'00"W
45135	East Ontario	43°47.4N 76°52.4W	45002	Michigan N.	45°18'00"N 86°18'00"W
45136	Superior	48°32.3N 86°56.8W	45003	Huron	45°18'00"N 82°48'00"W
45137	Georgian Bay	45°32.6N 81°00.9W	45004	Superior	47°12'00"N 86°30'00"W
45139	West Ontario	43°25.6N 79°22.9W	45005	Erie	41°42'00"N 82°30'00"W

CORRECTIONS TO RADIO AIDS TO MARINE NAVIGATION

45142	East Erie	42°44.2N 79°17.4W	45006	Superior	47°18'00"N 90°00'00"W
			45007	Michigan S.	42°43'00"N 87°06'00"W
			45008	Huron	44°18'00"N 82°24'00"W
Weatheradio Canada					
<p>A very comprehensive network of stations is covering the Great Lakes area. Frequencies in used are: 162.400 MHz, 162.475 MHz, and 162.550 MHz. Broadcasts include Public and Marine Forecasts, select warnings, watches and advisories. Hourly updated observations from coastal stations and offshore buoys are all incorporated in the broadcast.</p> <p>Note: Weatheradio Canada alerts users to selected warnings of severe weather automatically, provided receivers are equipped with suitable alert devices they will emit a loud continuous tone and/or flashing light when a warning is issued.</p>					

SAILING DIRECTIONS AND SMALL CRAFT GUIDE CORRECTIONS

Labrador and Hudson Bay, Sixth Edition, 1988 —

Page 206 — Paragraph 172, lines 1 to 10 (Re : correction promulgated in Bi-Weekly Edition No. 13/94)

Delete: “An angular ... alongside.”

Replace by: A 52 foot (16 m) wide Ro-Ro ramp is located at the inner end of the west side of the wharf.

(N14/99)

Page 208 — Add diagram of Rigolet included in Section IV of this Monthly Edition.

(N14/99)

Page 250 — Paragraph 337, line 8 – after “radar.”

Insert: A **light** (324.3) is shown from a 12 foot (3.6 m) high skeleton tower showing red and white daymarks on the SW end of Crown Island.

(N14/99)

Page 250 — Paragraph 340, last line

Add: A shoal with a least depth of 10 feet (3.1 m) and marked by starboard hand light **buoy** NA6 (324.82) is located 1.3 miles SW of the western tip of Sandy Island.

(N14/99)

Page 256 — Paragraph 408, last line

Add: Starboard and port hand light **buoys** NP4 and NP5 (324.72, 324.71) mark the channel through Bridges Passage close west of Rain Islet.

(N14/99)

Page 256 — Paragraph 411, line 4 – after “**Rock**,”

Insert: marked by port hand light **buoy** NJ3 (324.83) and

(N14/99)

Page 288 — Paragraph 85, line 4

Delete: NW of the islet

(N14/99)

Nova Scotia (Atlantic Coast) and Bay of Fundy, First Edition, 1990 —

Page 202 — Paragraph 14, line 5

Delete: 1.3 miles SSW

Replace by: 2.55 miles SW

(A13/99)

Page 213 — Paragraph 137, line 10 – after “light”

Insert: and bell

(A13/99)

SAILING DIRECTIONS AND SMALL CRAFT GUIDE CORRECTIONS

- Page 219 — Paragraph 7, last line
 Add: East cardinal light and whistle buoy T is moored 1 mile
 SE of Black Rock. (A13/99)
- Page 226 — Paragraph 56, line 6
 Delete: Light and bell buoy TS53
 Replace by: A buoy, TS53, (A13/99)
- Page 237 — Paragraph 140, lines 8 to 10
 Delete: “Light ... Island.” (A13/99)
- Page 256 — Paragraph 105, lines 1 and 2
 Delete: “A light ... rock,”
 Replace by: Two lights are shown from masts situated on rocks, (A13/99)
- Page 260 — Paragraph 140, lines 2 to 4
 Delete: “A marine ... wharf.” (A13/99)
- Page 276 — Paragraph 118
 Delete: “The old ferry wharf” to end of paragraph. (A13/99)
- Page 276 — Paragraph 119, lines 1 and 2
 Delete: The Digby Public wharf lies close south of the old ferry
 wharf.
 Replace by: Digby Public Wharf: (A13/99)
- Page 277 — Paragraph 134, lines 1 and 2
 Delete: “**Light** ... from”
 Replace by: At Port George, there is a discontinued light tower, (A13/99)
- Page 277 — Paragraph 135, lines 3 and 4
 Delete: “White ... conspicuous.” (A13/99)
- Page 277 — Paragraph 135, lines 7 to 10
 Delete: “Two ... Saint John.”
 Replace by: A church at Margaretsville is conspicuous. (A13/99)
- Page 279 — Delete paragraph 163. (A13/99)

SAILING DIRECTIONS AND SMALL CRAFT GUIDE CORRECTIONS

Gulf of St. Lawrence, First Edition, 1992 —

Page 115 — Diagram, North Lake Harbour, range lights
 Amend Legend “Q9m” to “QG9m” for front range light at outer end of east breakwater.
 Amend Legend “Iso4m” to “IsoG14m” for rear range light, 204 degrees, 328 m from front range light. (A14/99)

Page 158 — Paragraph 47, last line
 Delete: **Conspicuous oil** tanks are situated close north of the wharf.
 Replace by: In 1999, this wharf was in a state of disrepair. (A14/99)

Page 162 — After paragraph 62
 Insert: 62.1 A highway bridge, with a reported over head clearance of 6.1 m (20 ft), has been constructed at Strawberry Point, 0.4 mile south of the Morrissey Bridge. This bridge, together with the Morrissey Bridge, restrict navigation on the Miramichi River south of Newcastle to very small recreational craft. (A14/99)

Page 162 — Paragraph 64, lines 4 and 5
 Delete: “and are navigable a short distance” to end of paragraph. (A14/99)

ATL 101 — Newfoundland — Northeast and East Coasts, First Edition, 1997

Page 59 — Paragraph 459.1, lines 4 and 5 (Re : correction promulgated in Monthly Edition No. 2/98)
 Delete: “135 feet ... 1997.”
 Replace by: 92 feet (28 m) long with depths of 2 to 8 feet (0.5 to 2.5 m) alongside. A detached crib in ruins extends about 36 feet (11 m) off the outer end of the wharf. (N15/99)

Page 84 — Top right column
 Delete: 4536
 Replace by: 4858 (N15/99)

Page 84 — Paragraph 243, line 5
 Delete: 14 feet (4.3 m)
 Replace by: 15 feet (4.6 m) (N15/99)

Page 84 — Paragraph 246, line 2
 Delete: SSW
 Replace by: SSE (N15/99)

SAILING DIRECTIONS AND SMALL CRAFT GUIDE CORRECTIONS

Page 85 — Top left column

Delete: 4536

Replace by: 4858

(N15/99)

Page 85 — Paragraph 256, line 10

Delete: 4.5 feet (1.3 m)

Replace by: 7 feet (2 m)

(N15/99)

Page 86 — Top left column

Delete: 4536

Replace by: 4858

(N15/99)

Page 86 — Paragraph 261, line 4

Delete: 4.6 m

Replace by: 4.7 m

(N15/99)

Page 86 — Paragraph 261, line 9

Delete: 246 feet (75 m)

Replace by: 351 feet (107 m)

(N15/99)

Page 86 — Paragraph 261, line 11

Delete: (5.5 m)

Replace by: (5.6 m)

(N15/99)

Page 86 — After paragraph 263

Delete: *Chart 4535*

Replace by: *Charts 4858, 4535*

(N15/99)

Page 86 — Paragraph 264, line 4

Delete: 17 feet (5.2 m)

Replace by: 18 feet (5.5 m)

(N15/99)

Page 86 — Paragraph 264, line 7

Delete: 50 feet (15.2 m)

Replace by: 49 feet (15 m)

(N15/99)

Page 87 — Top left column

Delete: *Chart 4535*

Replace by: *Charts 4858, 4535*

(N15/99)

SAILING DIRECTIONS AND SMALL CRAFT GUIDE CORRECTIONS

Page 87 — Before paragraph 280

Insert: *Chart 4535*

(N15/99)

Page 100 — Paragraph 413, lines 6 to 8

Delete: “171 feet ... end.”

Replace by: 154 feet (47 m) to a depth of 11 feet (3.3 m)
alongside an 82 foot (25 m) long outer end.

(N15/99)

Page 100 — Paragraph 413, line 10

Delete: 175 feet (53 m)

Replace by: 184 feet (56 m)

(N15/99)

Page 101 — Paragraph 413, line 12

Cancel correction promulgated in Monthly Edition No. 4/99.

(N15/99)

Page 101 — Paragraph 413, last line

Add: The previously mentioned shoal bank is marked by a
buoy. Another **buoy** marking a shoal is moored about
0.15 mile SE.

(N15/99)

ATL 102 — Newfoundland — East and South Coasts, First Edition, 1995 —

Page 7 — Paragraph 72, lines 7 to 9

Delete: “56 m ... wide.”

Replace by: 71 m (233 ft) long with a depth of 1.5 m (5 ft)
alongside a 7 m (23 ft) wide outer end.

(N16/99)

ATL 103 — Newfoundland — Southwest Coast, First Edition, 1995 —

Page 17 — Paragraph 149, lines 7 and 8

Cancel correction promulgated in Monthly Edition No. 4/97.

Delete: “15 m ... alongside”

Replace by: 44 m (144 ft) long with a depth of 1.7 m (6 ft)
alongside a 7 m (23 ft) wide outer end

(N17/99)

Page 23 — Paragraph 190, line 4

Delete: 80 m (262 ft)

Replace by: 78 m (256 ft)

(N17/99)

SAILING DIRECTIONS AND SMALL CRAFT GUIDE CORRECTIONS

Page 23 — Paragraph 190, lines 5 to 7

Delete: “The outer ... alongside.”

Replace by: A depth of 4.1 m (13 ft) exists alongside the outer end of the wharf.

(N17/99)

ATL 107 — St. John River, First Edition, 1994 —

Page 72 — Delete paragraph 18 and wharf pictograph.

(A15/99)

CEN 302 — Lake Ontario, First Edition, 1996 —

Page 18 — After paragraph 264

Insert: ^{264.1} A water **intake pipe** extends 0.2 mile from the north shore 0.7 mile ENE of Makatewis Island. The **intake structure** at the outer end is submerged 14 feet (4.3 m).

(C44/99)

Page 60 — Paragraph 272, lines 6 and 7

Delete: “The northern part” to end of paragraph.

Replace by: Prior to 1965, the northern part of Inner Harbour was dredged to a depth of 8.2 m (27 ft).

(C44/99)

Page 66 — Paragraph 12, line 2

Delete: a small launching **ramp**,

(C44/99)

Great Lakes, Volume 2, Seventh Edition, 1993 —

Page 199 — Paragraph 2, line 5

Delete: is closed to navigation.

Replace by: was reopened on July 14, 1998. The lock is primarily for the use of recreational boaters and tour boats.

(C42/99)

Page 200 — After paragraph 22

Insert: 22.1 For transit of the Canadian Sault Ste. Marie Canal, contact the Lockmaster, call sign *VDX 23 Canadian Canal*, on VHF Channel 14 (156.7 MHz).

(C42/99)

SAILING DIRECTIONS AND SMALL CRAFT GUIDE CORRECTIONS

Page 200 — Delete paragraph 29

Replace by: 29 Sault Ste. Marie (Canada) Canal Lock is operated and maintained by the City of Sault Ste. Marie under an agreement with *Parks Canada*.

(C42/99)

Page 204 — Paragraph 103, lines 3 to 5

Delete: “Canadian Parks Service” to end of paragraph.

Replace by: *Parks Canada*. This lock went out of service in July, 1987, due to a structural failure. A smaller lock was built inside the original structure and the Canal was reopened in July, 1998.

(C42/99)

Page 207 — Delete paragraph 132

Replace by: 132 The original lock was over 900 feet (274 m) long. The new lock is 254 feet (77.4 m) long, 50 feet (15.2 m) wide and has a depth at the sills of 9.8 feet (3 m). Maximum vessel dimensions are 225 feet (68.6 m) long and 49 feet (14.9 m) wide.

(C42/99)

Page 207 — Delete paragraph 133

Replace by: 133 The operating season is from mid May to mid October. The lock is operated under the *Historic Canal Regulations*. Copies of these regulations and information on hours of operation, as well as Canadian Hydrographic Service nautical charts and publications, are available from *Parks Canada* at the *Visitors Centre* or by contacting the Superintendent, *Parks Canada*, 1 Canal Drive, Sault Ste. Marie, Ontario; telephone (705) 941-6262.

(C43/99)

Page 207 — Delete paragraph 134

Replace by: 134 The lock traffic **signal lights** are as follows: *red* – wait/stand by; *flashing red* – the lock is being prepared, prepare to cast off; *green* – the lock is ready, proceed. A railway swing bridge, owned by *Wisconsin Central Railways*, crosses the upper canal. The central pier is on the north side of the canal. Railway traffic has precedence over vessel traffic. A light in the centre of the bridge span that crosses the canal shows red when the bridge is closed. A light on the north side of the canal shows green when the bridge is open. These lights are shown at an elevation of 14 feet (4.3 m).

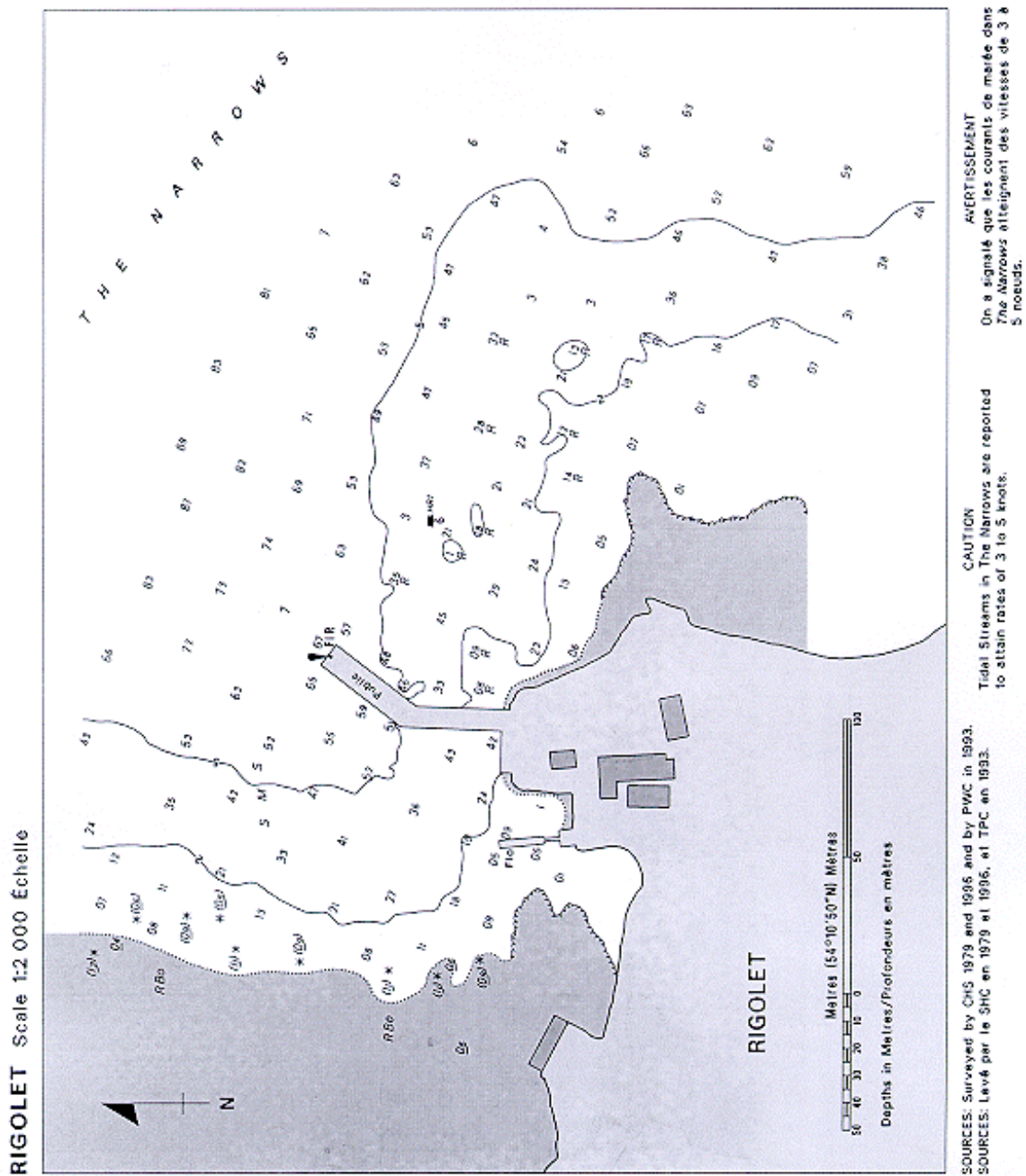
(C43/99)

SAILING DIRECTIONS AND SMALL CRAFT GUIDE CORRECTIONS

Page 245 — Paragraph 231, last line – after “building” (Re : correction promulgated in Monthly Edition No. 5/99)

Insert: ; the structure is floodlit

(C34/99)



No.	Name	Position ----- Latitude N. Longitude W.			Light Characteristics			Focal Height in m. above water	Nomi- nal Range	Description ----- Height in meters above ground		Remarks ----- Fog Signals	

NEWFOUNDLAND

324.3	Crown Island	56 16 55.5 60 56 47.5	FI	R	4s	31.1	Cylindrical mast. 3.7	Year round.				Chart:5049 1127/99
324.71	Bridges Passage light buoy NP5	56 27 08 61 34 09.8	FI	G	4s	Green, marked "NP5".	Seasonal.				Chart:5052 1127/99
324.72	Palungitak light buoy NP4	56 26 58.1 61 33 24.3	FI	R	4s	Red, marked "NP4".	Seasonal.				Chart:5052 1127/99
324.82	Sandy Island Shoal light buoy NA6	56 23 04.7 61 07 05.1	Q	R	1s	Red, marked "NA6".	Seasonal.				Chart:5052 1127/99
324.83	Jenks Rocks light buoy NJ3	56 28 27.1 61 39 07.4	FI	G	4s	Green spar, marked "NJ3".	Seasonal.				Chart:5052 1127/99

ATLANTIC

67 H4126	Tongue Shoal	On reef at E. entrance. 45 03 44.8 67 00 47.8	FI	W	4s	6.8	7	Red square skeleton tower. 10.1	Radar reflector. Year round.				Chart:4332 1125/99
170 H3948	Port Greville								Delete from List.				Chart:4010 1132/99
196 H3922	Port George								Delete from List.				Chart:4010 1132/99
216 H3884	Boars Head	On W. side of N. entrance to Petit Passage. 44 24 12 66 13 06	FI	W	5s	18.3	12	White square tower. 10.7	Flash every 5s. Emergency light. Year round.			Horn - Blast 2s; sil. 3s; blast 2s; sil. 3s; blast 2s; sil. 48s. Horn points 315°.	Chart:4118 1116/99
223 H3872	Brier Island	On W. point of island. 44 14 55 66 23 32	FI(3)	W	18s	29.0	17	White octagonal tower, 3 red horizontal bands. 18.3	Flash 0.2 s; eclipse 2.8 s; flash 0.2 s; eclipse 2.8 s; flash 0.2 s; eclipse 11.8 s. Emergency light. Year round.			Horns(2) - Blast 3s; sil. 3s; blast 3s; sil. 51s Horns point 270° and 315°. Horns sound in unison.	Chart:4118 Edn. # 06/99

No.	Name	Position ----- Latitude N. Longitude W.	Light Characteristics	Focal Height in m. above water	Nomi- nal Range	Description ----- Height in meters above ground	Remarks ----- Fog Signals
-----	------	--	--------------------------	--	-----------------------	--	---------------------------------

No.	Name	Position ----- Latitude N. Longitude W.	Light Characteristics	Focal Height in m. above water	Nomi- nal Range	Description ----- Height in meters above ground	Remarks ----- Fog Signals
-----	------	--	--------------------------	--	-----------------------	--	---------------------------------

ATLANTIC (cont'd)

227 H3878	Peter Island	S. entrance to Grand Passage. 44 15 26.4 66 20 15.1	Fl Y 5s	17.8	8	White octagonal tower. 12.4	Flash every 5 s. Emergency light. Year round. Horn - Blast 2s; sil. 18s. Chart:4118 Edn. # 06/99
260 H3820	Cape Forchu Racon -... (B) X Band	E. Cape, S. point, Yarmouth Sound. 43 47 38.8 66 09 19.4	Fl(2) W 10s	37.5	22	Hexagonal tower, red and white vertical stripes. 22.9	Flash 2 s; eclipse 10 s. Emergency light. Year round. Chart:4245 Edn. # 06/99
272 H3818	Green Island	Centre of Island. 43 41 22.8 66 08 40.3	Fl W 5s	25.0	12	White square tower on white building. 6.0	Flash every 5 s. Emergency light. Year round. Horn - Blast 2s; sil. 18s. Horn points 270°. Chart:4243 1123/99
282.5	Pearl Rock	43 38 13.3 66 01 24.9	Fl R 4s	5	Cylindrical mast. 7.5	Flash 0.5 s; eclipse 3.5 s Year round. Chart:4244 1123/99
294.55	Indian Sluice Point Wharf	At the end of wharf. 43 46 20.9 65 57 04.5	Fl R 4s	4.2	Skeleton tower. 3.0	Flash 0.5 s; eclipse 3.5 s Year round. Chart:4244 1123/99
312 H3794	Woods Harbour	On Big Ledge. 43 31 10.5 65 44 43	Fl W 6s	6.3	12	White square tower, red upper portion. 6.3	Flash 1 s; eclipse 5 s. Year round. Horn - Blast 3s; sil. 27s. Horn points 201°. Chart:4210 1134/99
326.5	<i>La Have Bank</i> <i>ODAS light buoy</i> <i>44142</i>	42 29 48 64 01 00	Fl(5) Y 20s	<i>Yellow, marked "44142".</i>	<i>Year round.</i> Chart:8006 1126/99
360.01	<i>Gunning Cove</i> <i>light buoy SA51</i>	43 41 01.5 65 20 18	Fl G 4s	<i>Green, marked "SA51".</i>	 Chart:4209 1139/99
368	<i>Green Harbour</i> <i>light and bell buoy</i> <i>KP</i>						<i>Delete from List.</i> Chart:4241 1133/99
387.5	<i>Shingle Point light</i> <i>buoy UX55</i>	43 48 42.5 64 55 33	Q G 1s	<i>Green, marked "UX55".</i>	<i>Year round.</i> Chart:4240 1133/99

No.	Name	Position ----- Latitude N. Longitude W.	Light Characteristics	Focal Height in m. above water	Nomi- nal Range	Description ----- Height in meters above ground	Remarks ----- Fog Signals
-----	------	--	--------------------------	--	-----------------------	--	---------------------------------

ATLANTIC (cont'd)

403 H3742.6	Hunts Landing	On outer end of breakwater. 43 57 04.9 64 46 08.1	F R	7.6	7	Skeleton mast.	Year round. Chart:4240 1133/99
419	Green Ledge light and bell buoy TS53						Delete from List. Chart:4211 1131/99
420.5	Black Rock east cardinal light and whistle buoy T	44 09 38 64 18 46	Q(3) W	10s	Black, yellow and black, marked "T".	Chart:4384 1131/99
452.7	East Shoal light and bell buoy MC55	44 27 12 64 12 39	Fl G	4s	Green, marked "MC55".	Year round. Chart:4381 1131/99
490	Dover Castle light and whistle buoy AT	S. of Taylor Island. 44 26 42.2 65 53 35.8	Mo(A) W	6s	Red and white vertical stripes, marked "AT".	Year round. Chart:4386 1131/99
531.5	Melville Island light buoy HQ12						Delete from List. Chart:4202 1128/99
557	Seaview Point light buoy H39	44 40 37.6 63 37 14	Fl G	4s	Green, marked "H39".	Year round. Chart:4201 1121/99
558	Wrights Point Cautionary light buoy HNCC						Delete from List. Chart:4201 1121/99
665 H3586	Sable Island West End	43 55 54.8 60 01 25	Fl W	15s	32.0	23 Skeleton tower, two red and white rectangular daymarks. 26.0	Flash every 15 s FR light on each corner of tower. Year round. Chart:4098 1137/99
791	Alder Point light buoy U4	Entrance to Little Bras d'Or, W. of point. 46 18 56.2 60 17 05.2	Q R	1s	Red, marked "U4".	Winter spar Year round. Chart:4276 Edn. # 06/99
791.5	Little Bras d'Or Entrance light buoy U9	46 18 46.2 60 17 05.2	Fl G	4s	Green, marked "U9".	Winter spar Year round. Chart:4276 Edn. # 06/99

No.	Name	Position ----- Latitude N. Longitude W.	Light Characteristics	Focal Height in m. above water	Nomi- nal Range	Description ----- Height in meters above ground	Remarks ----- Fog Signals
-----	------	--	--------------------------	--	-----------------------	--	---------------------------------

ATLANTIC (cont'd)

792 H772	Little Bras d'Or range	On N. side of entrance. 46 18 43.7 60 17 13.8	F R	8.8	Skeleton mast, enclosed lower portion, white daymark, red vertical stripe. 3.6	Year round.
793 H772.1		211°46' 354 m from front.	F R	12.7	Skeleton mast, enclosed lower portion, white daymark, red vertical stripe. 6.5	Year round. Chart:4276 Edn. # 06/99
794.2	McCreadyville light buoy U12	46 18 38.7 60 17 07.4	Fl R 4s	Red, boat type, marked "U12".	Winter spar Year round. Chart:4276 Edn. # 06/99
794.4	Little Bras d'Or - Sector light	46 17 53.8 60 17 09.8	F R Al W RW G Al GW	4.1	Square tower, enclosed lower portion. 3.4	Red from 180°15' to 182°05'; Al RW 182°05' to 182°30'; white from 182°30' to 183°; Al GW 183° to 183°25'; green from 183°25' to 185°15'. Year round Chart:4276 Edn. # 06/99
891	Ballantynes Cove Wharf	On S. side of wharf. 45 51 29.9 61 55 09	Fl R 12s	5.8	13	Triangular skeleton mast. 4.6	Flash 2 s; eclipse 10 s. Seasonal. Chart:4404 1124/99
973 H964	Wood Islands Harbour range	On outer end of eastern training pier. 45 56 54.3 62 45 07	F Y	7.4	6	White square structure, red vertical stripe. 5.7	Visible in line of range. Seasonal. Horn - Blast 2s; sil. 18s Horn points 210°.
974 H964.1		002°19' 162m from front.	F Y	11.4	7	White square tower, red vertical stripe. 9.7	Seasonal. Chart:4483 1115/99
1039	North Lake Harbour range	On outer end of E. breakwater. 46 28 06.7 62 04 07.6	Q G 1s	9.1	Square skeleton tower, white daymark, red vertical stripe. 6.5	Visible in line of range. Seasonal. Horn - Blast 3s; sil. 27s Operated by local resident when required. Seasonal.
1039.1		204°32' 328.1m from front.	Iso G 4s	13.9	Square skeleton tower, white daymark, red vertical stripe. 9.2	Visible in line of range. Seasonal. Chart:4023 1118/99
1173.9	Split Shoal light buoy M15.5	47 08 31.7 65 00 28.3	Fl G 4s	Green, marked "M15.5"	Winter spar. Chart:4911 764/99

No.	Name	Position ----- Latitude N. Longitude W.	Light Characteristics	Focal Height in m. above water	Nomi- nal Range	Description ----- Height in meters above ground	Remarks ----- Fog Signals
-----	------	--	--------------------------	--	-----------------------	--	---------------------------------

ATLANTIC (cont'd)

1375 H1664	Paspébiac	On sand bank. 48 00 57.6 65 14 52	Fl W 6s	13.7	20	Square skeleton tower, two fluorescent orange rectangular daymarks; on E. and S. sides. 12.2	Flash 1 s; eclipse 5 s Year round. Operates at night only. Chart:4921 Edn. # 06/99
1392.7 H1703	Chandler East	Outer end of wharf. 48 20 27.9 64 39 31.9	Fl W 5s	14.1	Red and white square skeleton tower. 9.2	Flash 0.5 s; eclipse 4.5 s Year round. Chart:4921 Edn. # 06/99
1394	Anse à L'Îlot	48 20 37.9 64 40 09	Fl Y 4s	4.0	4	Mast. 2.0	Flash 0.4 s; eclipse 3.6 s. Year round. Operates at night only. Maintained by Municipalité de Chandler. Chart:4921 1108(P)/99
1395 H1704	Chandler range	On shore. 48 20 49.3 64 40 27	F W	10.1	Square skeleton tower, fluorescent orange daymark, black vertical stripe. 7.6	Emergency light. Year round.
1396 H1704.1		321°10' 198.5m from front.	F W	18.8	Square skeleton tower, fluorescent orange daymark, black vertical stripe. 14.0	Emergency light. Year round. Chart:4921 Edn. # 06/99
1403 H1718	Cap d'Espoir	Near extremity. 48 25 09.1 64 19 04.2	Fl(4) W 30s	25.5	17	White octagonal tower. 40.1	Flash 2 s; eclipse 3 s; flash 2 s; eclipse 3 s; flash 2 s; eclipse 3 s; flash 2 s; eclipse 13 s Year round. Chart:4485 Edn. # 06/99
1412 H1738	Île Plate	On small islet off Pointe St-Pierre. 48 37 37 64 09 26	Fl W 6s	24.7	9	Square skeleton tower, two red and white rectangular daymarks. 12.2	Flash 1 s; eclipse 5 s Year round. Chart:4485 Edn. # 06/99
1426 H1762	Cap Gaspé	Close to S. face. 48 45 03.8 64 09 48	Fl W 5s	106.9	14	White octagonal tower. 9.1	Flash every 5 s Night emergency light. Seasonal Chart:4485 Edn. # 06/99
1479 H886	Île Brion	Near extreme W. point of island. 47 46 54.3 61 30 30.7	Fl W 3s	40.0	10	White octagonal tower. 11.3	Flash 1 s; eclipse 2 s Obscured from 239°30' to 253° and from 262° to 265°30'. Emergency light. Year round. Chart:4952 Edn. # 06/99
1479.5 H887	Pointe de l'Est Racon --. (G) X Band	47 36 58 61 23 25.7	Fl W 4s	15.5	10	Square skeleton tower. 6.4	Emergency light. Year round. Chart:4952 Edn. # 06/99

No.	Name	Position ----- Latitude N. Longitude W.	Light Characteristics	Focal Height in m. above water	Nomi- nal Range	Description ----- Height in meters above ground	Remarks ----- Fog Signals
-----	------	--	--------------------------	--	-----------------------	--	---------------------------------

No.	Name	Position ----- Latitude N. Longitude W.	Light Characteristics	Focal Height in m. above water	Nomi- nal Range	Description ----- Height in meters above ground	Remarks ----- Fog Signals
-----	------	--	--------------------------	--	-----------------------	--	---------------------------------

ATLANTIC (cont'd)

1488 H912	Cap-aux-Meules	On Pointe Hérissee. 47 23 05 61 57 32.9	Fl W 6s	28.2	20	White cylindrical tower. 11.5	Flash 1 s; eclipse 5 s Emergency light. Year round. Operates at night only.	Chart:4951 Edn. # 06/99
1496 H900	Cap Alright	On extremity of low point, E. of cape. 47 23 27.2 61 46 24.4	Fl W 6s	24.1	20	White square tower. 8.5	Flash 1 s; eclipse 5 s Emergency light. Year round.	Chart:4951 Edn. # 06/99
1496.5 H915	Cap-aux-Meules breakwater	Outer end of breakwater. 47 22 32.4 61 51 06.6	Fl R 6s	8.2	Square skeleton tower. 4.9	Emergency light. Year round.	Chart:4956 Edn. # 06/99
1497 H914	Cap-aux-Meules wharf range	Outer end of wharf. 47 22 36.7 61 51 13.2	Iso G 1s	7.3	Red square skeleton tower, white daymark, fluorescent red vertical stripe. 4.6	Flash 0.5 s; eclipse 0.5 s Visible in line of range. Emergency light. Year round.	
1498 H914.1		330°15' 132.2m from front.	Iso G 1s	11.8	Red skeleton tower, white daymark, fluorescent red vertical stripe. 9.1	Flash 0.5 s; eclipse 0.5 s Visible in line of range. Year round. Delete Fog signal.	Chart:4956 Edn. # 06/99
1498.5 H915.4	Cap-aux-Meules West breakwater	47 22 35 61 51 25.2	Iso R 2s	7.2	Square skeleton tower. 4.9	Emergency light. Seasonal.	Chart:4956 Edn. # 06/99
1500 H906	Île du Havre Aubert	S. point of island. 47 12 44.8 61 58 18.9	Fl(3) W 20s	31.1	20	White hexagonal tower. 16.6	Flash 2 s; eclipse 2 s; flash 2 s; eclipse 2 s; flash 2 s; eclipse 10 s Visible from 262° through W., N. and E. to 100°. Year round.	Chart:4951 Edn. # 06/99
1505 H909	Havre-Aubert range	On shore, S. side of harbour. 47 13 43.1 61 49 59.6	Iso G 1s	4.6	Red square skeleton tower, white daymark, red vertical stripe. 5.1	Visible in line of range. Emergency light. Seasonal.	
1506 H909.1		213°32' 541m from front.	Iso G 4s	13.1	Red square skeleton tower, white daymark, red vertical stripe. 5.0	Visible in line of range. Seasonal.	Chart:4957 Edn. # 06/99
1506.5 H910	Havre-Aubert Sector	On outer end of wharf. 47 14 08.5 61 50 02.8	F R W G	4.3	White square tower. 3.7	Red from 305° to 322°50'; white from 322°50' to 325°50'; green from 325°50' to 007° through N. White sector indicates preferred channel. Emergency light. Seasonal.	Chart:4957 Edn. # 06/99

No.	Name	Position ----- Latitude N. Longitude W.	Light Characteristics	Focal Height in m. above water	Nomi- nal Range	Description ----- Height in meters above ground	Remarks ----- Fog Signals
-----	------	--	--------------------------	--	-----------------------	--	---------------------------------

ATLANTIC (cont'd)

1510	Île d'Entrée wharf	Outer end of wharf. 47 16 39 61 43 07.5	Iso R 2s	5.4	Square skeleton tower. 5.2	Emergency light. Radar reflector. Seasonal.	Chart:4951 Edn. # 06/99
1511	Île d'Entrée North side	On top of cliff, NE. end of island. 47 17 17 61 41 22.1	Fl W 3s	71.0	8	Square skeleton tower. 5.3	Flash 1 s; eclipse 2 s Emergency light. Year round.	Chart:4951 Edn. # 06/99
1515 H1866	Pointe du Sud-Ouest	On extremity. 49 23 28.9 63 35 43.4	Fl W 6s	20.7	8	Square skeleton tower. 15.2	Flash 1 s; eclipse 5 s Emergency light. Year round.	Chart:4430 Edn. # 06/99
1519 H1870	Baie Ellis Main range	NW. corner of bay. 49 49 30.2 64 22 33.6	F G	12.1	20	Square skeleton tower, fluorescent orange daymark, black vertical stripe. 9.1	Visible in line of range. Emergency light. Year round.	
1520 H1870.1		339°25' 1041.5m from front.	F G	26.7	20	Square skeleton tower, fluorescent orange daymark, black vertical stripe. 15.2	Visible in line of range. Year round.	Chart:4430 Edn. # 06/99
1528.8	Brador light and bell buoy BRA	51 25 32.4 57 15 34.3	Mo(A) W	Red and white vertical stripes, marked "BRA".		Chart:4470 1106/99
1629 H1782	Rivière-au-Renard wharf	On outer end of wharf. 48 59 52 64 22 58.7	F Y	7.0	9	Square skeleton tower. 4.6	Emergency light. Seasonal.	Chart:C-4 Edn. # 06/99
1630 H1780	Rivière-au-Renard range	48 59 41.9 64 23 12.8	F R	10.1	Square skeleton tower, fluorescent orange daymark, black vertical stripe. 6.1	Visible in line of range. Seasonal.	
1630.1 H1780.1		216°12' 73.1m from front.	F R	10.3	Square skeleton tower, fluorescent orange daymark, black vertical stripe. 7.6	Visible in line of range. Seasonal.	Chart:C-4 Edn. # 06/99
1640 H1800	L'Anse-à-Valleau	49 05 15.2 64 33 36.8	Fl W 10s	95.1	20	Skeleton tower.	Flash every 10 s Night emergency light. Year round.	Chart:4026 Edn. # 06/99

INLAND

1047	Thessalon Breakwater						Delete from List.	Chart:2251
------	----------------------	--	--	--	--	--	-------------------	-------------------

No.	Name	Position ----- Latitude N. Longitude W.	Light Characteristics	Focal Height in m. above water	Nomi- nal Range	Description ----- Height in meters above ground	Remarks ----- Fog Signals
-----	------	--	--------------------------	--	-----------------------	--	---------------------------------

1111/99

No.	Name	Position ----- Latitude N. Longitude W.	Light Characteristics	Focal Height in m. above water	Nomi- nal Range	Description ----- Height in meters above ground	Remarks ----- Fog Signals
-----	------	--	--------------------------	--	-----------------------	--	---------------------------------

INLAND (cont 'd)

1047	<i>Thessalon Breakwater light buoy KA2</i>	46 15 02.6 83 33 09.3	<i>Fl R 4s</i>	<i>Red, marked "KA2".</i>	Chart:2251 1111/99
1264.7	<i>Hawkesbury wharf light buoy HK4</i>	45 37 00.2 74 36 05.6	<i>Fl R 4s</i>	<i>Red, marked "HK4".</i>	<i>Privately maintained by Hawkesbury Township. Year round.</i> Chart:1514 1114/99
1296.40	<i>Ottawa River information light buoy</i>	45 27 19.2 75 41 28.8	<i>Fl Y 4s</i>	<i>White and orange marked "Casino de Hull, Quai d'accostage, Docking Facilites".</i>	<i>Seasonal. Privately maintained.</i> Chart:1515 1100/99
1296.41	<i>Rivière Gatineau information light buoy</i>	45 27 23.2 75 42 02.8	<i>Fl Y 4s</i>	<i>White and orange marked "Casino de Hull, Quai d'accostage, Docking Facilites".</i>	<i>Seasonal. Privately maintained.</i> Chart:1515 1100/99
1296.42	<i>Rivière Gatineau information light buoy</i>	45 27 25.2 75 42 56.8	<i>Fl Y 4s</i>	<i>White and orange marked "Casino de Hull, Quai d'accostage, Docking Facilites".</i>	<i>Seasonal. Privately maintained.</i> Chart:1515 1100/99
1296.48	<i>Ottawa River information light buoy</i>	45 26 12.2 75 42 11.8	<i>Fl Y 4s</i>	<i>White and orange marked "Casino de Hull, Quai d'accostage, Docking Facilites".</i>	<i>Seasonal. Privately maintained.</i> Chart:1515 1100/99

**CANADIAN COAST GUARD
MARINE INFORMATION REPORT AND SUGGESTION SHEET**

Navigating Officer or Observer _____ Captain: _____

Ship (or address) _____

If Merchant Vessel add Line or Company with Head Office address: _____

General locality: _____

Subject: _____

Approx. position: _____ Lat. _____ Long. _____

Chart No. used to plot: _____ (Corrected to N/N No. _____ of 19 _____)

Publications affected: (Quote Volume and page) _____

* Full details (Attach additional sheets as necessary)

Time (UTQ) _____ Date _____

INSTRUCTIONS:

Mariners are requested to notify the responsible authorities when new or suspected dangers to navigation are discovered, changes are observed in aids to navigation, or corrections to publications are seen to be necessary.

** In the case of new or suspected dangers to navigation, it is important that all details be given in order to aid with future investigations. Items of interest include heights, depths, physical description, type of bottom and equipment method used to position the item. It is helpful to mark details on chart, which will be promptly replaced by the Canadian Hydrographic Service.*

Reports should be made to the nearest Marine Communications and Traffic Services Centre and should be confirmed in writing to:

Director, Marine Aids,
Coast Guard,
Department of Fisheries and Oceans,
Ottawa, Ontario, K1A 0E6

In the case of information Canadian
navigational aids or the List
of Lights, Buoys and Fog
Signals.

OR

Dominion Hydrographer,
Canadian Hydrographic Service,
Department of Fisheries and Oceans,
Directions"
Ottawa, Ontario, K1A 0E6

In the case of new or suspected
dangers to navigation, or where
corrections to "Sailing
appear to be necessary.